



MILWAUKEE
PUBLIC SCHOOLS

Gifted and Talented Identification and Services

February 13, 2025

Eduardo Galván
Interim Superintendent



MILWAUKEE
PUBLIC SCHOOLS

Gifted and Talented Identification and Services

Presenters

Dr. John Hill

Director

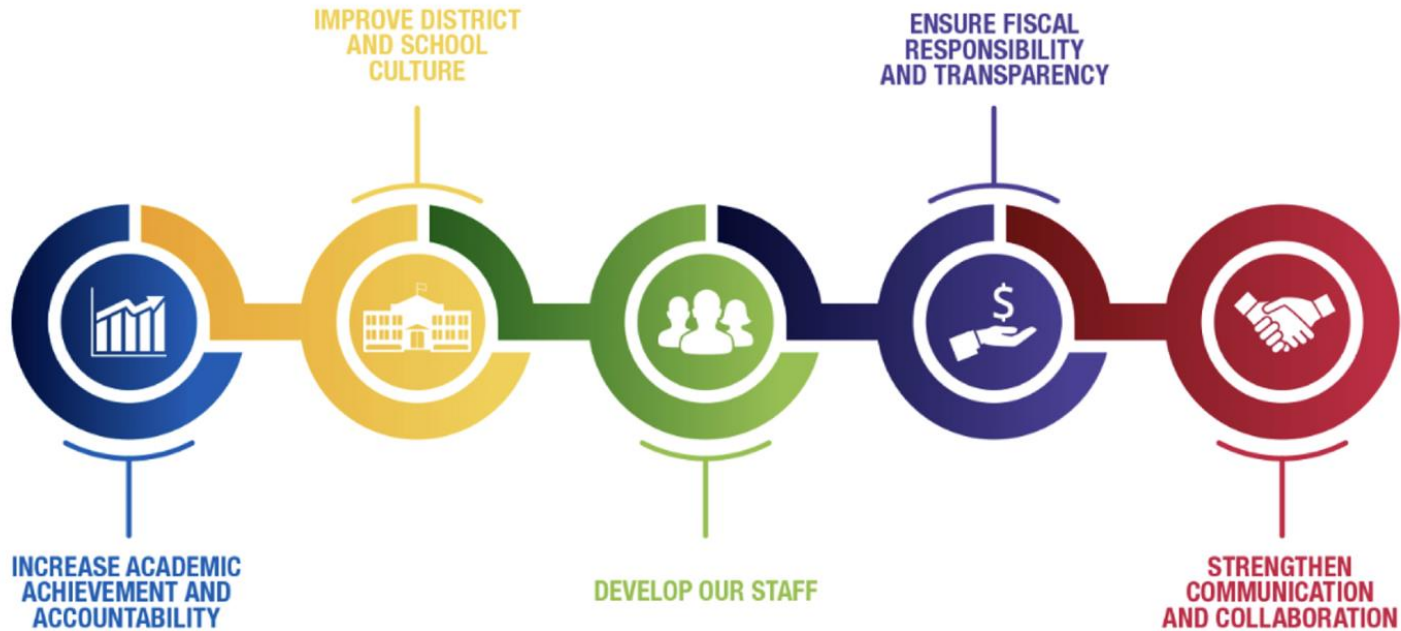
Department of College and Career Readiness

Robert Latterman

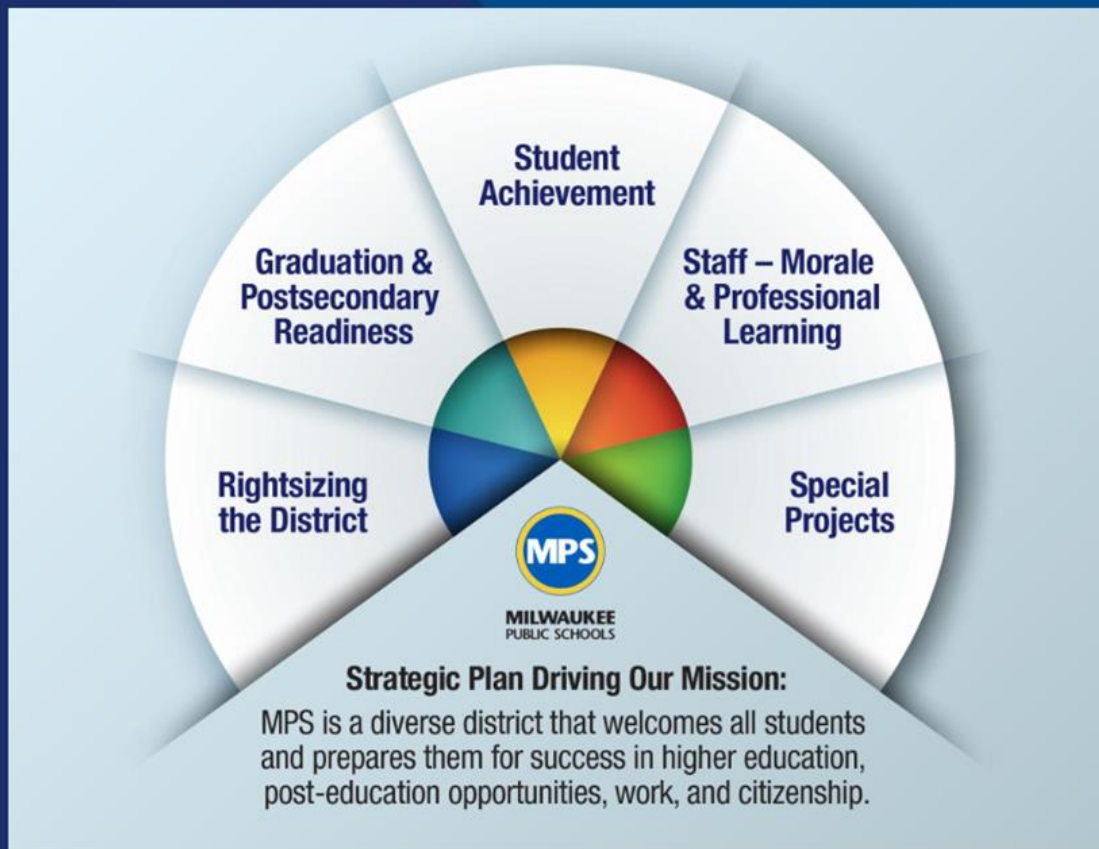
Manager

Department of Research, Assessment, and Data

Five Priorities for Success



Strategic Plan Driving Our Mission



High Ability/High Potential vs. Gifted and Talented

High Ability/High Potential (Local Norms)

Students demonstrating above average ability in a cognitive domain.

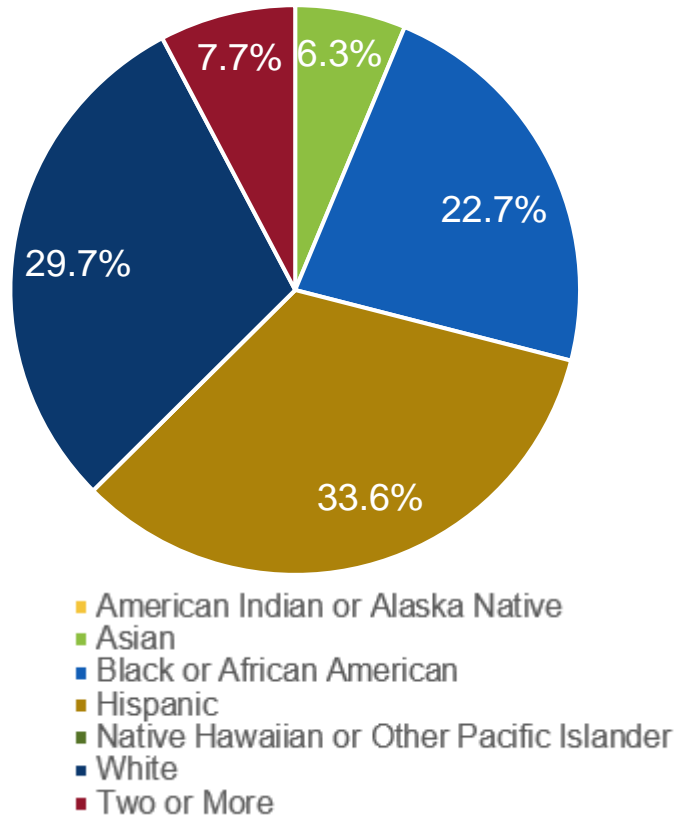
Gifted and Talented (National Norms)

Students demonstrating significantly above average ability students in a cognitive domain.

	High Ability/High Potential		Gifted and Talented	
	Identified Students	Percent of Tested	Identified Students	Percent of Tested
2022	395	9.9%	131*	3.3%*
2023	416	10.1%	166	4.0%
2024	414	10.2%	162	4.0%

*Criteria expanded after 2022

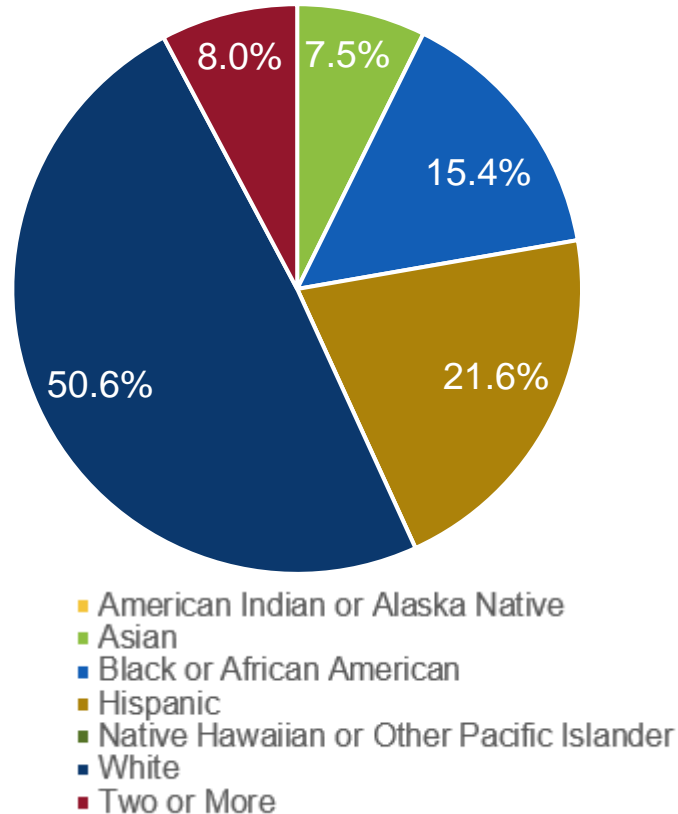
Demographics: High Ability/High Potential



Students Identified as High Ability/High Potential

	Grade 2 Enrollment	HA/HP
Special Education Students	21.2%	8.9%
English Learners	20.5%	17.9%
Economically Disadvantaged	82.2%	71.5%
Female	47.9%	50.7%
Male	52.1%	49.0%

Demographics: Gifted and Talented

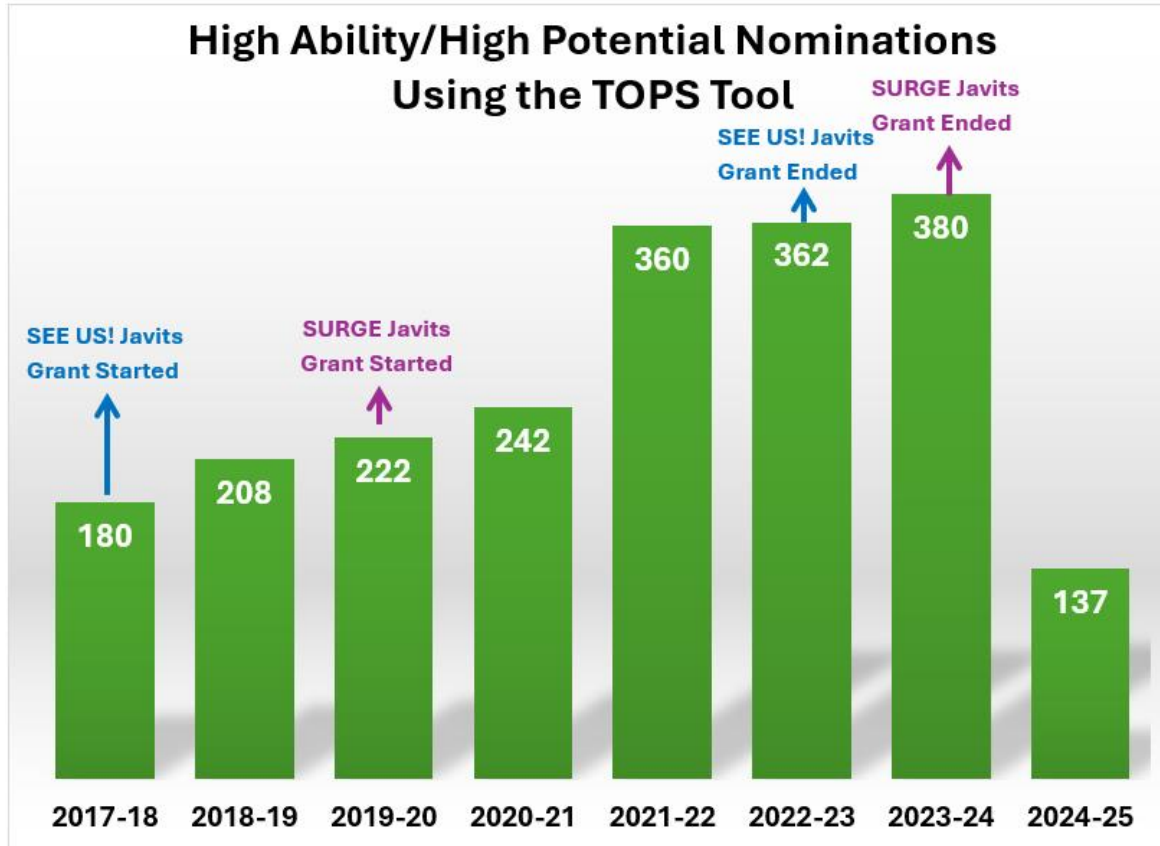


Students Identified as Gifted and Talented

	Grade 2 Enrollment	GT
Special Education Students	21.2%	8.0%
English Learner	20.5%	11.1%
Economically Disadvantaged	82.2%	56.2%
Female	47.9%	43.8%
Male	52.1%	55.6%

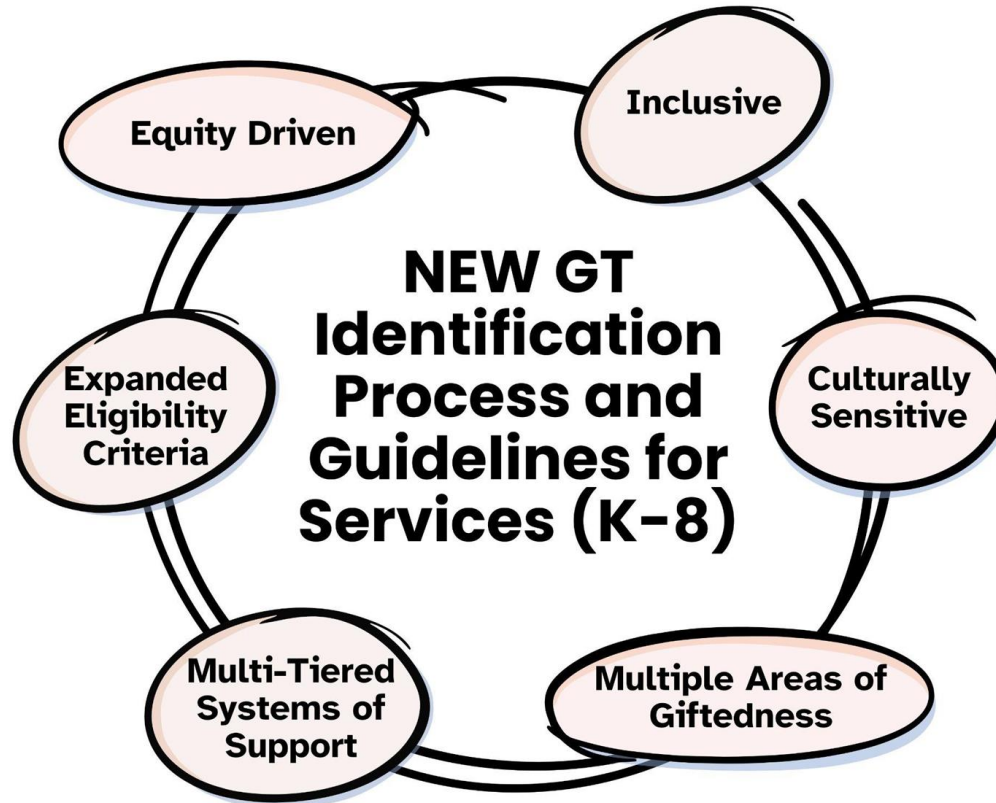
Teacher Observation of Potential in Students (TOPS) Tool

Identification of High Ability/High Potential in Javits Classrooms



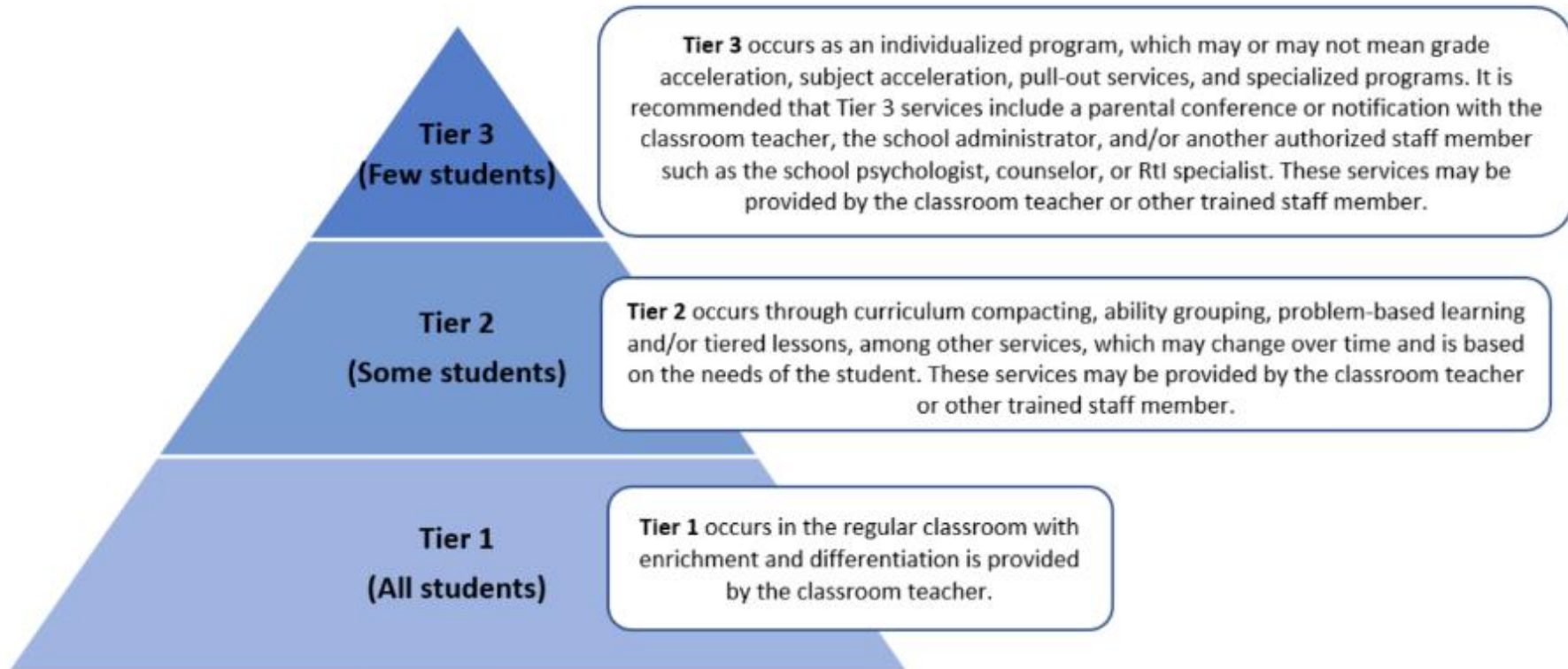
Total number of HA/HP nominations is 2,091 between 2017 to 2024.

Updated Gifted Identification Guidelines (K-8)



Updated 2024 GT
Identification
[Guidelines](#)

Guidelines for Gifted Services





MILWAUKEE
PUBLIC SCHOOLS

Thank You