

Montessori Strategic Plan Update

October 13, 2022



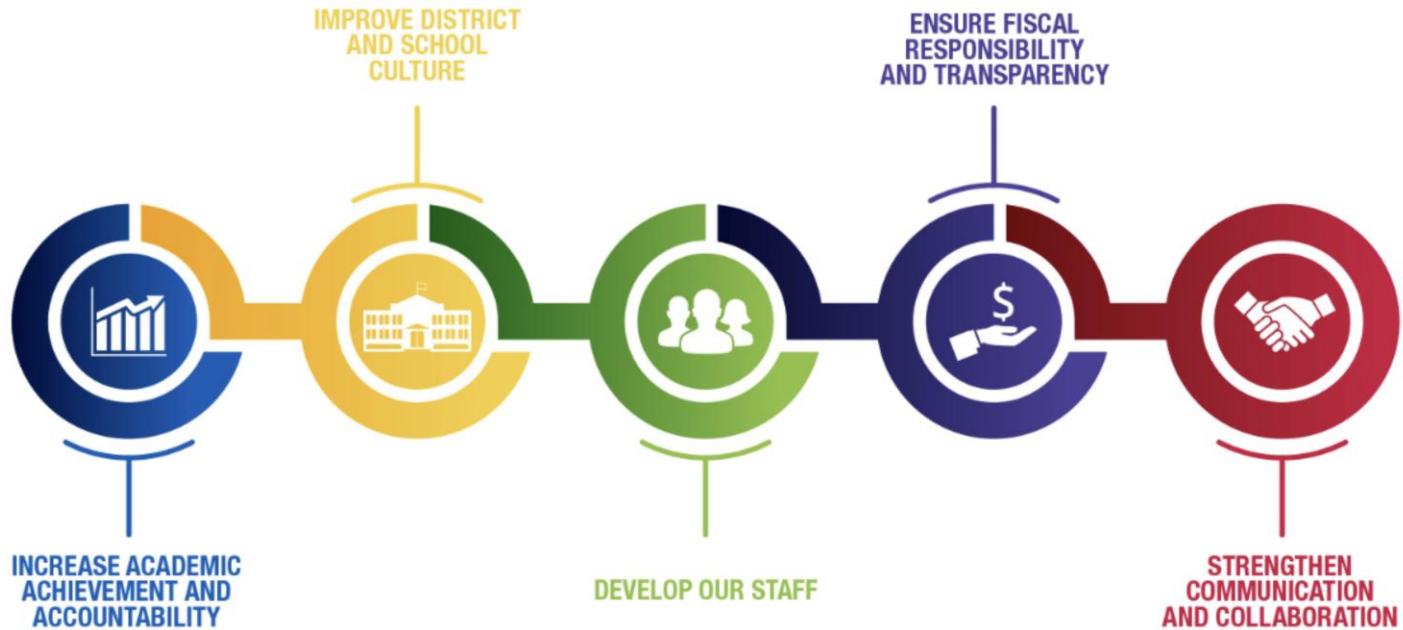
MILWAUKEE
PUBLIC SCHOOLS

Presenters:

Abigail Rausch, Montessori Coordinator, Department of Curriculum and Instruction
Andrea Corona, Principal, MacDowell Montessori School

Dr. Keith P. Posley, *Superintendent*

Five Priorities for Success



Montessori Strategic Plan Progress

Completed Work

- Conducted Montessori Advisory Committee meeting for October
- Completed Montessori Summer school
- Implemented Montessori K3-K4 staggered start
- Held teacher committees on report card revisions and secondary expectations
- Created and staffed Montessori Planning Assistant position



Montessori Strategic Plan Progress

Current Work

- Conducting monthly Montessori principal meetings
- Supporting orders for textbook adoption alternative
- Establishing Secondary expectations
- Implementing Dual-Language Montessori Curriculum Initiative
- Revising Infinite Campus Grade Book
- Supporting new staff

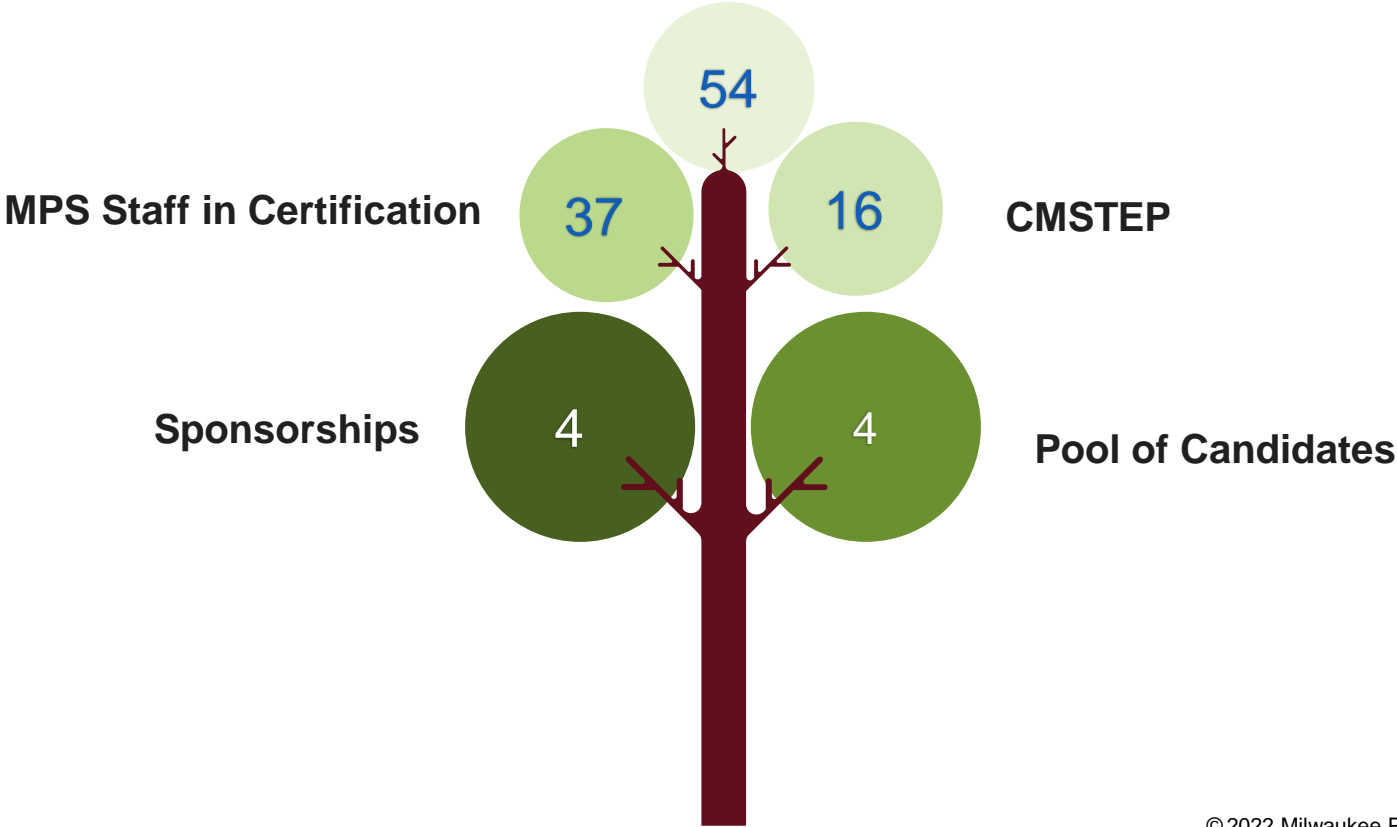


Montessori Summer School



- 92 students
- 60% daily attendance
- Students from 7 schools
- 7/8 grade Montessori curriculum

Montessori Teacher Pathway



Montessori Strategic Plan: Next Steps

November
2022

- Montessori Advisory Committee meeting November 8, 5:30pm
- Implementation of Infinite Campus Grade Book updates
- Conduct retention survey for Montessori program employees
- Updating Montessori branding and marketing materials

December
2022

- Montessori Advisory Committee meeting December 12, 5:30pm
- All Montessori schools Professional Development
- Creation of Secondary materials inventory
- Develop a minimum Standard of Care for Montessori classrooms and facilities

January
2023

- Montessori Advisory Committee meeting January 9, 5:30pm
- Establish staffing needs
- Complete Social Studies textbook adoption alternative purchases
- Continue to develop the expectations for secondary
- Continue to develop the dual-language curriculum for Riley

Thank you.



Dr. Keith P. Posley, *Superintendent*

© 2022 Milwaukee Public Schools • 8