



**MILWAUKEE  
PUBLIC SCHOOLS**

# **MPS/MKE Early Childhood 1,825 Initiative Update**

**October 10, 2024**

**Eduardo Galván  
Interim Superintendent**



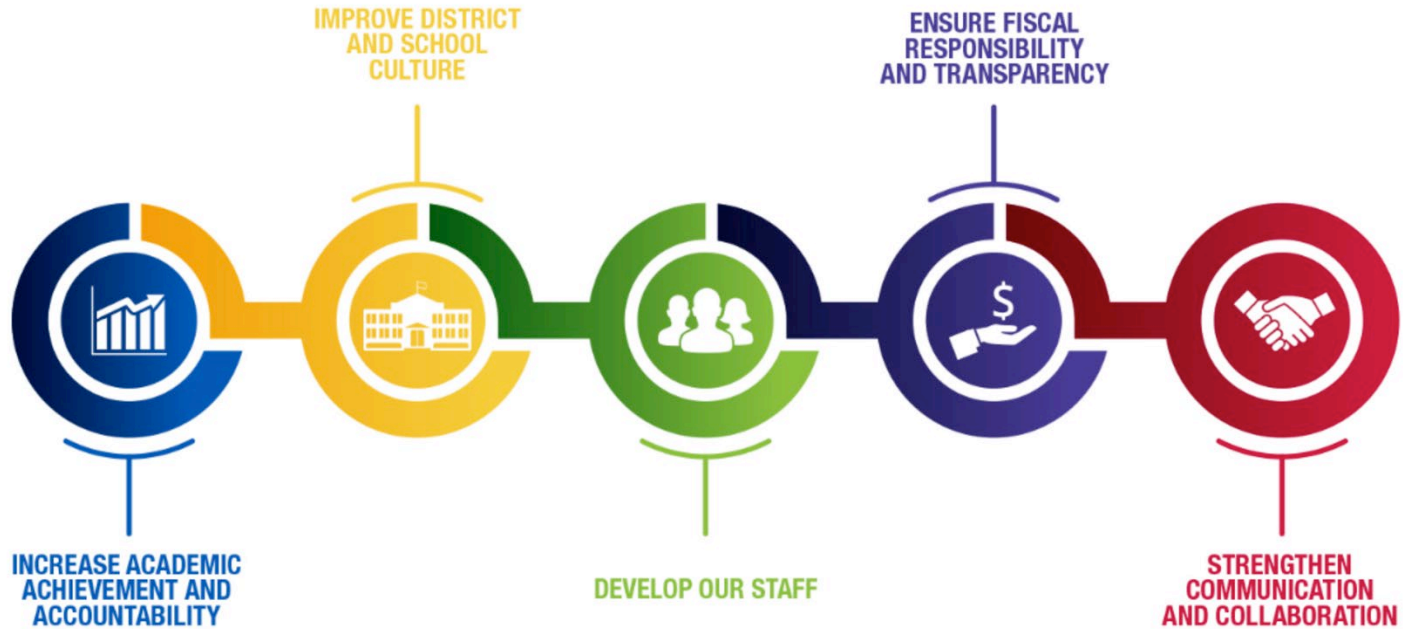
**MILWAUKEE**  
PUBLIC SCHOOLS

# **MPS/MKE Early Childhood 1,825 Initiative Update**

*Presenter*

Allison Foyer,  
Early Childhood Supervisor,  
Department of Curriculum  
and Instruction

# *Five Priorities for Success*



# Success = Alignment and Connection

## MPS Strategic Plan



## Academic Standard of Care

1. Build positive relationships with students and families.
2. Know what each student needs in each content area.
3. Conduct formative assessments regularly.
4. Differentiate instruction for students.
5. Instruct students at or above grade level.
6. Utilize scaffolding for students above and below grade level.
7. Design instruction using the content standards.
8. Use district-adopted/endorsed materials during instruction.
9. Center learning around student interests, voice, and choice.
10. Design learning experiences for students that are inquiry-based.

## Ambitious Instruction



**ONE initiative!**



# Early Childhood Initiative Focus and Goals

Early Childhood Staff Development	Equitable Resources	Family Support and Transition	Instruction	Social-Emotional, Cultural, and Linguistic Needs
Provide high-quality professional learning opportunities for all early childhood care providers and educators	Ensure that early childhood programs are equitably equipped with resources needed to meet the needs of the children and families they serve	Support families and childcare centers by providing resources as children transition from early childcare centers to prekindergarten and kindergarten	Ensure that high-quality, research-based instruction is provided for all early childhood children and students	Provide support for students to address SEL needs as well as take into consideration the cultural and linguistic needs of students





# Early Childhood Initiative Focus and Goals

## Completed Work

### Early Childhood Staff Development

- Presented at the Promoting Early Childhood Conference
- Offered a three-part Educator Well-Being series to MPS teachers

### Equitable Resources

- Provided resources at the Celebrating Abilities Family Forum
- Compiled and shared a calendar of community summer events

### Family Support and Transitions

- Held a S.O.L.E.L.Y. event focused on oral language development
- Developed a partnership with the Bay View Community Center

### Instruction

- Supported teachers with Counting Collections routines
- Implemented play clinics to improve teacher-student interactions

### Social and Emotional Learning and Cultural and Linguistic Needs

- Provided in-depth training on Conscious Discipline
- Connected with the Wisconsin Alliance for Infant Mental Health



 **Reading Adventures**

Supporting Oral Language  
In the Early Learning Years  
The S.O.L.E.L.Y. Series

*Milwaukee parents and caregivers:* Join us at the Lakeshore Learning Store for an exciting time with fun activities to enhance oral language skills. **This event is only for children 3 to 5 years of age.**

**Saturday, April 27, 2024 • 9:30 – 10:30 a.m.**

**Lakeshore Learning Store**

16900 W. Bluemound Rd., Brookfield, WI 53005

All children must be accompanied by an adult. Optional bus transportation available:

South Division High School, 1515 W. Lapham Blvd., 8:15 a.m. pickup  
MPS Central Services Building, 5225 W. Vliet St., 8:45 a.m. pickup

**Register at:** <https://mpsmke.com/4cDzYw1>

Register today to receive an event reminder — space is limited! For more information, contact Allison Froyer, MPS Early Childhood Supervisor at [foyerall@milwaukee.k12.wi.us](mailto:foyerall@milwaukee.k12.wi.us) or (414) 475-8673. Don't miss out on this educational and fun opportunity!

Hosted by the MPS/MKE Early Childhood 1,825 Initiative.



The MPS/MKE Early Childhood 1,825 Initiative is working to improve learning experiences for Milwaukee's children from birth to age 5.

©2024 Milwaukee Public Schools



# Early Childhood Initiative Focus and Goals

## Current Work

### Early Childhood Staff Development

- Serving on planning committees for early childhood conferences
- Attending Wisconsin Early Childhood Association conference

### Equitable Resources

- Updating MPS website to include community resources
- Creating calendar of events and distributing resources

### Family Support and Transitions

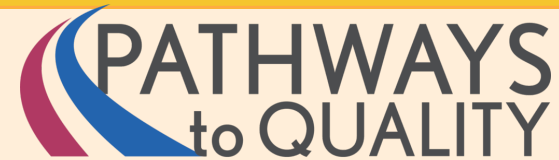
- Planning for S.O.L.E.L.Y. event(s) focusing on school readiness
- Collaborating with Office of Early Childhood initiative

### Instruction

- Supporting instructional staff with read-aloud strategies
- Expanding Smart Pre-K activities to external community

### Social and Emotional Learning and Cultural and Linguistic Needs

- Planning for opportunities focusing on social-emotional learning
- Working with Bridges on social-emotional learning–focused goal



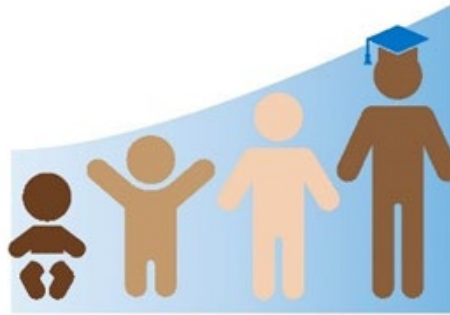
★ Conference and Resource Fair ★



Promoting  
Early Childhood

# Future Work

Co-plan events with partners to improve school readiness



 **MPS/MKE**  
**EARLY CHILDHOOD**  
**1,825 INITIATIVE**

Plan for opportunities that support health and wellness

Attend early childhood conferences and share information and resources with partners

Continue to work with community partners to provide resources and support to families of young learners







**MILWAUKEE  
PUBLIC SCHOOLS**

*Questions?*