



**MILWAUKEE
PUBLIC SCHOOLS**

M-Cubed College Connections Evaluation

November 2024

**Eduardo Galván
Interim Superintendent**



MILWAUKEE
PUBLIC SCHOOLS

M-Cubed College Connections Evaluation

Presenters

Dr. John Hill
Director of College and Career Readiness

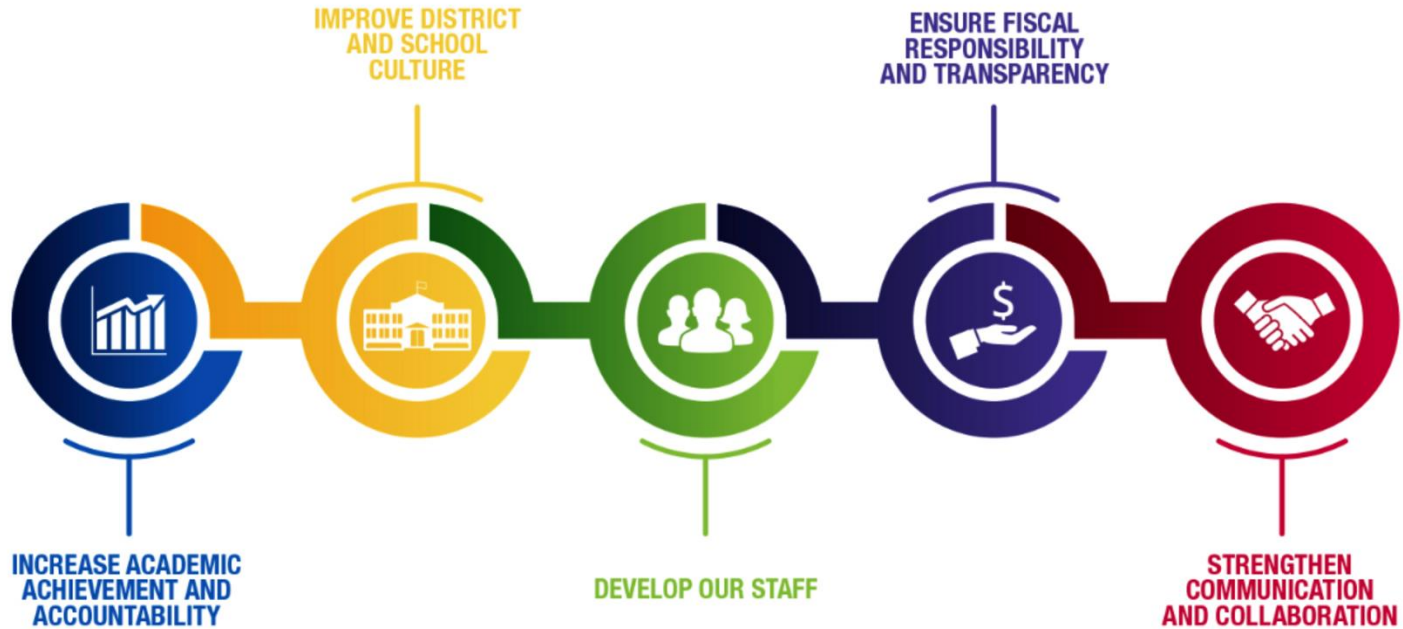
Matthew Zellmer
Planning Assistant
College and Career Readiness

Dr. Yasmine Al Abdul Raheem
Research Specialist
Research, Assessment, and Data

Student Presenter

Nialys Suarez
UWM Student

Five Priorities for Success



Strategic Plan Driving Our Mission



Strategic Plan Driving Our Mission:

MPS is a diverse district that welcomes all students and prepares them for success in higher education, post-education opportunities, work, and citizenship.

M-Cubed College Connections Program

Program Details

Partner Schools	Credits	Cost
<ul style="list-style-type: none">• University of Wisconsin-Milwaukee• Milwaukee Area Technical College	<ul style="list-style-type: none">• High school credits• College credits	<ul style="list-style-type: none">• Zero cost to student

Program Pathways

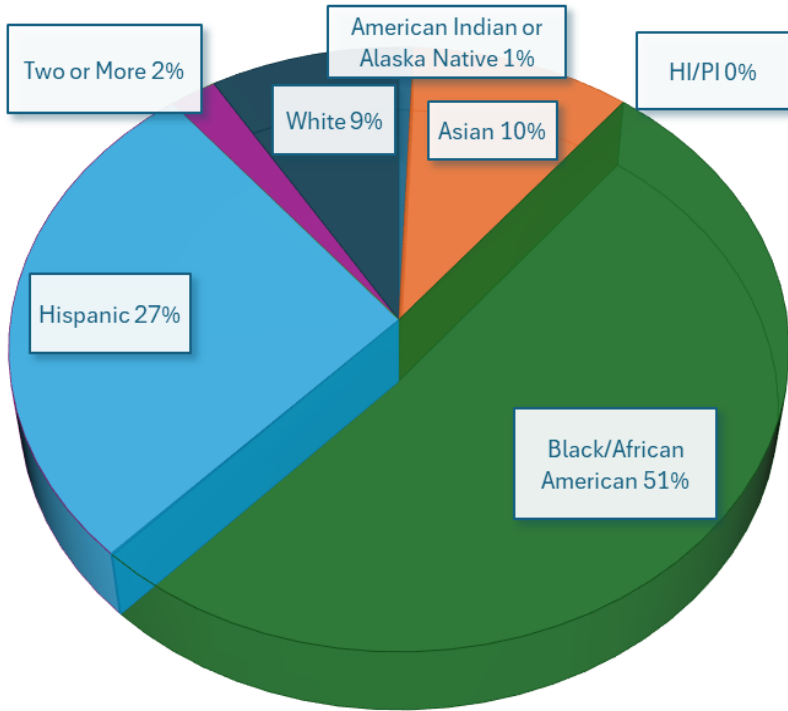
- **3 Pathways**

General	Nursing	Education
21 or 22 college credits in 12th grade year	2-year-pathway 34 college credits & a Licensed Practical Nursing Diploma	Internship in MPS elementary school during spring semester junior year or fall of senior year

M-Cubed Demographics

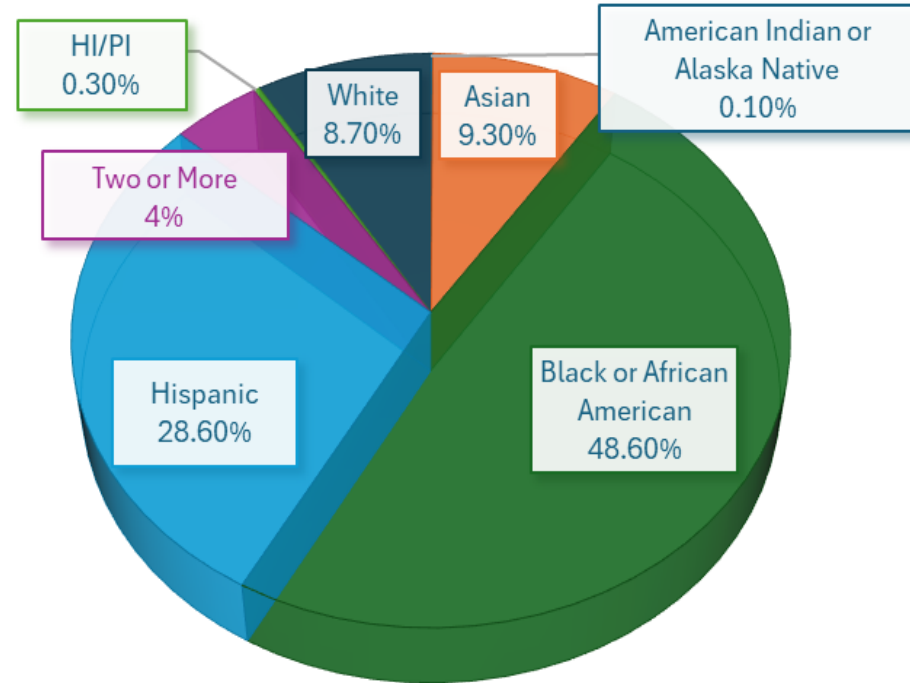
- M-Cubed Demographics

M-CUBED RACE/ETHNICITY

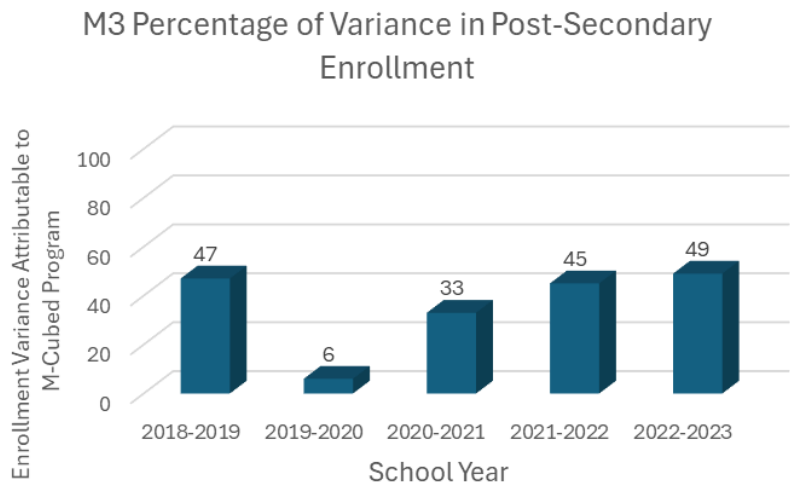


- MPS Demographics

MPS RACE/ETHNICITY



M-Cubed Post-Secondary Enrollment

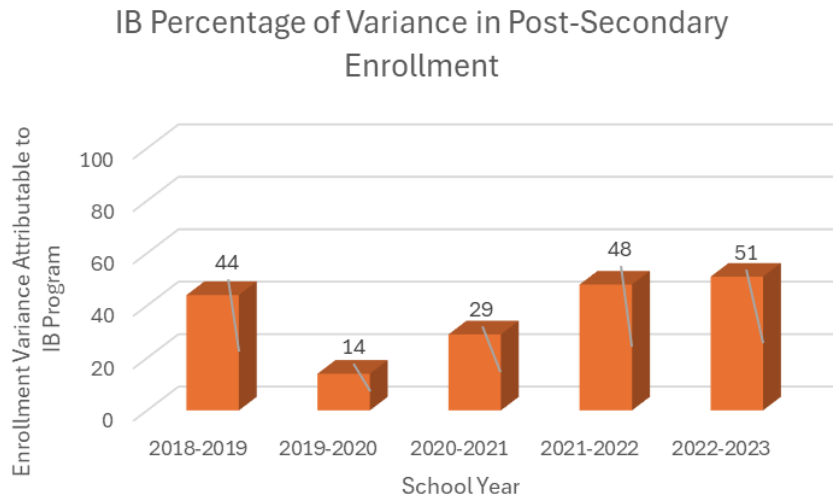


- M-Cubed participation is a significant predictor of post-secondary enrollment.
- Though M-Cubed participation was a significant predictor of post-secondary enrollment across the years, the effect size student exposure to the program changed (e.g. during the 2019-2020 school year).

Post-Secondary Enrollment Between Groups

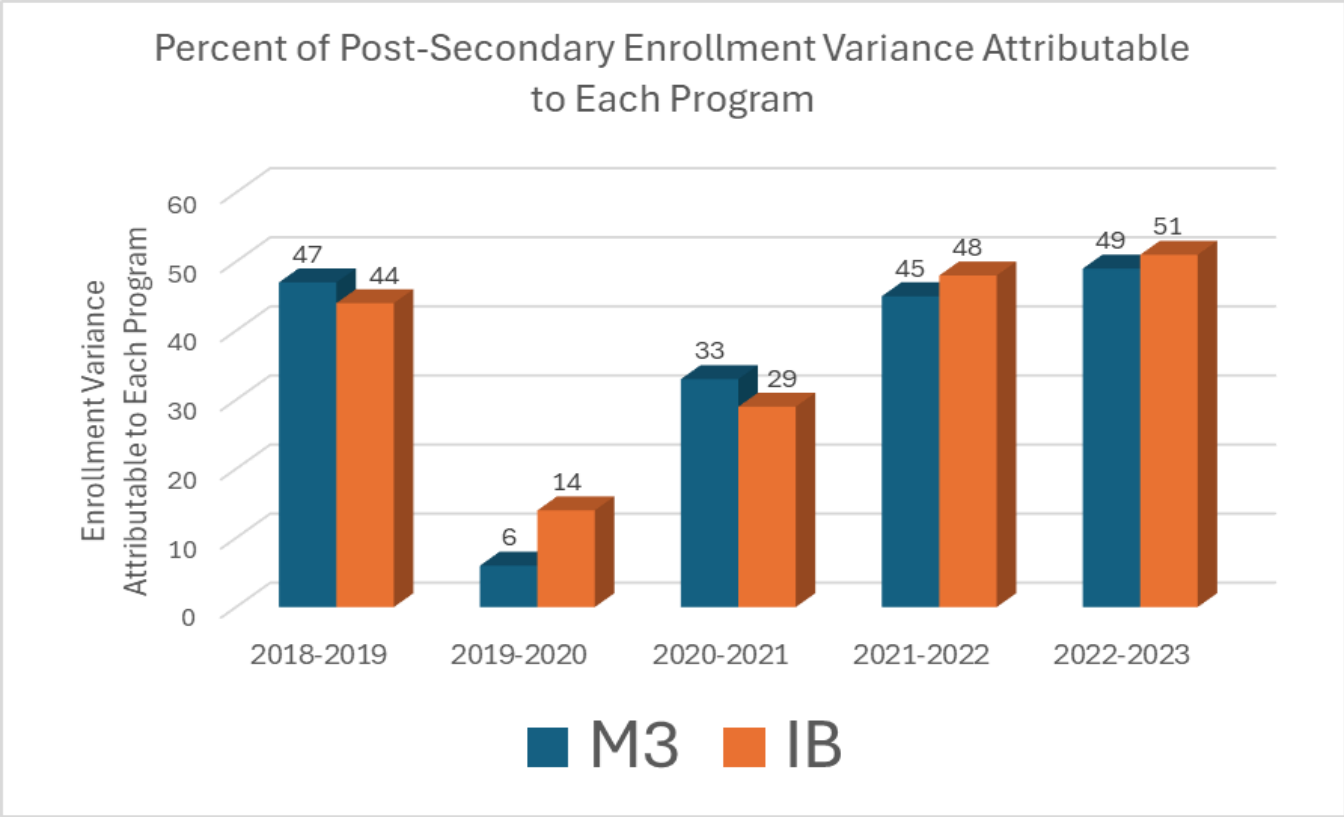
International Baccalaureate (IB)

Advanced Placement (AP)



- Findings related to AP course participation were not statistically significant as related to post-secondary enrollment.

Comparison of Variance Attributable to Post-Secondary Enrollment



AP was not found to be a statistically significant predictor of post-secondary enrollment

GPA Prior to M-Cubed vs After

	Freshman-Junior Year Students not enrolled in M-Cubed	Freshman-Junior Year Students enrolled in M-Cubed	Senior Year Students not enrolled in M-Cubed	Senior Year Students enrolled in M-Cubed
Average GPA	2.2	2.7	2.4	3.4

The students not enrolled in M-Cubed include IB and AP students as well



**MILWAUKEE
PUBLIC SCHOOLS**

Questions?