



MILWAUKEE
PUBLIC SCHOOLS

Enhancing Educational Communities and School Climate

November 12, 2024

Mr. Eduardo Galván
Interim Superintendent



MILWAUKEE
PUBLIC SCHOOLS

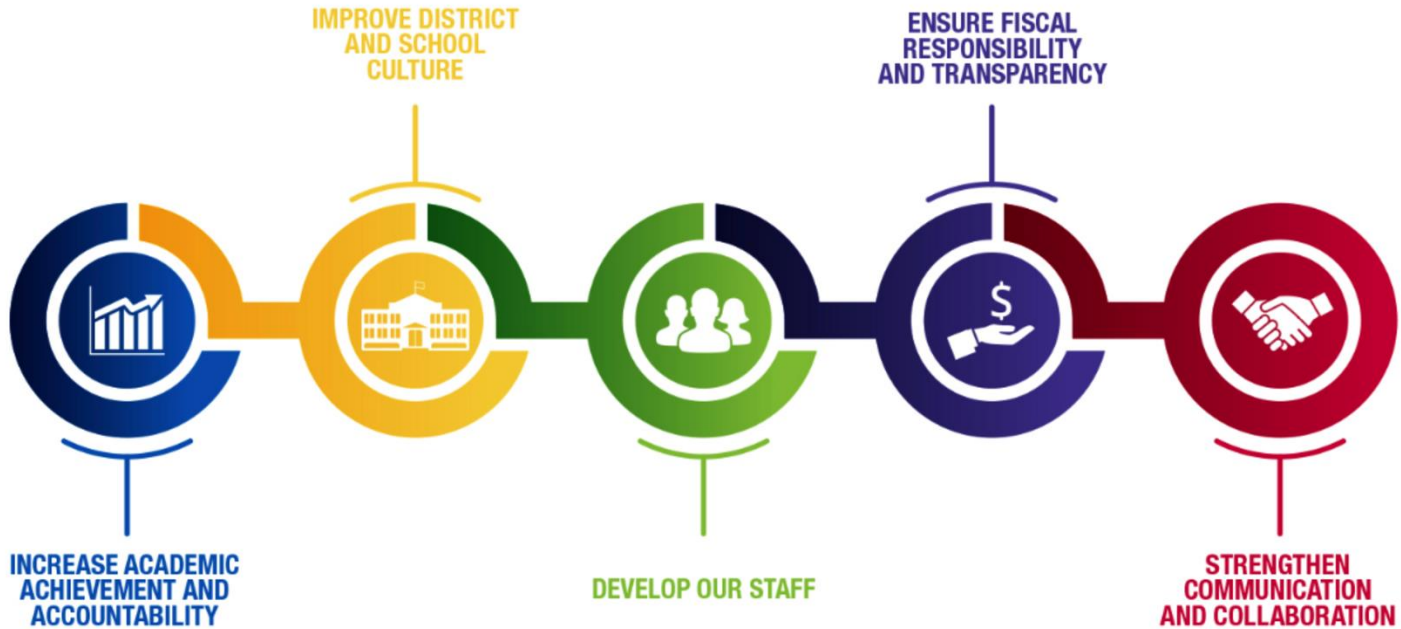
Enhancing Educational Communities and School Climate

Presenter

Jon Jagemann
District Discipline Manager

Donnyea Ellis
Principal Rufus King I.B.
Middle School

Five Priorities for Success



Committee Members and Constituent Inquiries

- Equitable practices identified and shared as part of a multi-tiered system of support
- Ongoing professional development offered
- Courageous Conversations About Race (CCAR) and District Equity Leadership Team (DELT)
- Equitably supporting identified schools
- Engaging student and community stakeholders
- Implementation of restorative practices

King International Middle School

- 160 students enrolled
- Principal Donnyea Ellis
- Student demographics
 - 90% Black
 - 4% Hispanic/Latino
 - 4% multiple races
 - 2% other races
- Suspensions down 34% year-to-date



King International Middle School

- Alternatives to suspensions
- Monthly newsletters
- T-chart
- Restorative practices, PBIS incentives
- School-wide systems
- All for one, one for all
- Community support
- Students move as a cohort
- Buddy classroom

King International Middle School

- Re-entry plan including a restorative conversation
- Brain breaks
- Respond to most issues through mediation
- Acknowledgement and celebrations





**MILWAUKEE
PUBLIC SCHOOLS**

**Thank
You!**