

# High School Region Showcase

February 10, 2022



MILWAUKEE  
PUBLIC SCHOOLS

**Presenters:**

Jennifer Smith, Ed.D., Regional Superintendent, Office of School Administration  
Syvell Hall, APIC, Groppi High School

Dr. Keith P. Posley, *Superintendent*

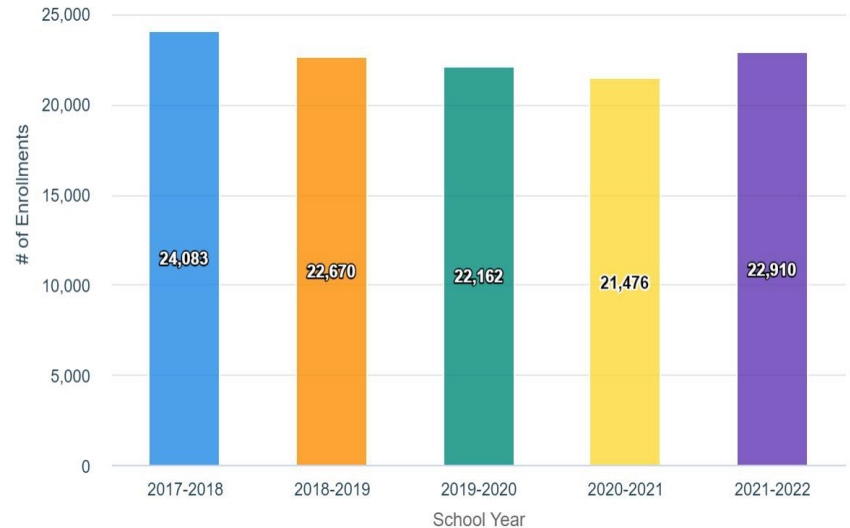
# High School Region Overview

- 26 schools plus the Milwaukee Virtual Program
- Montessori, IB, AP, Arts, NAF, GT, Language Immersion, Bilingual & Alternative
- Variety of programs and sizes to suit all learners

---

## High School Program Definitions

- IB: *International Baccalaureate*
- AP: *Advanced Placement*
- NAF: *National Academy Foundation*
- GT: *Gifted and Talented*



# High School Data

## SWD

22.4%  
4,469



## EL Students

11.1%  
2,221

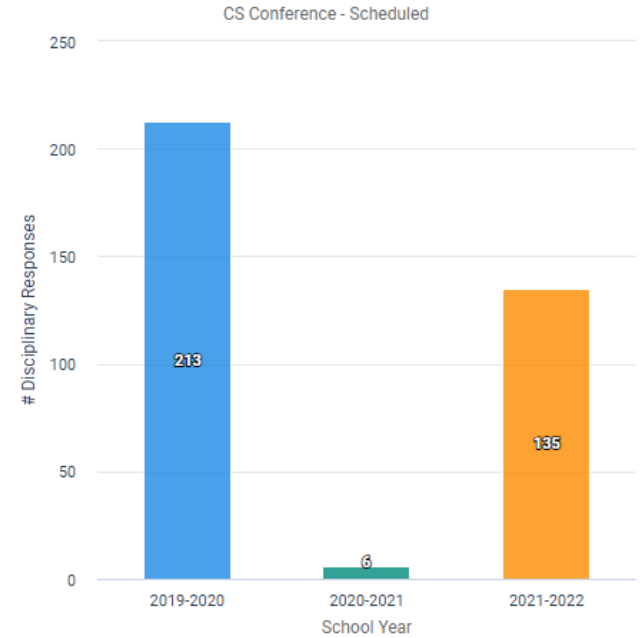
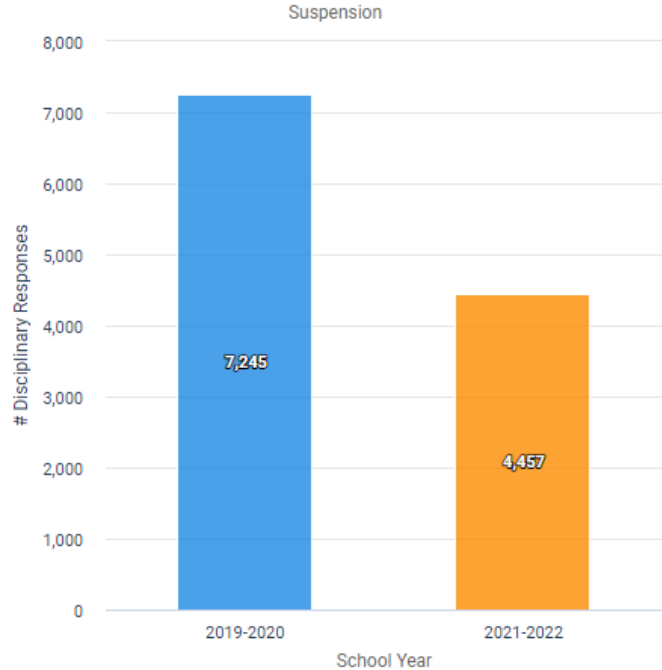
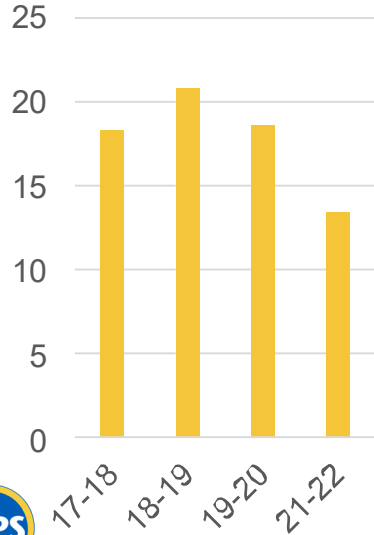


## Econ Disadv

74.1%  
14,783



### Suspension Rate

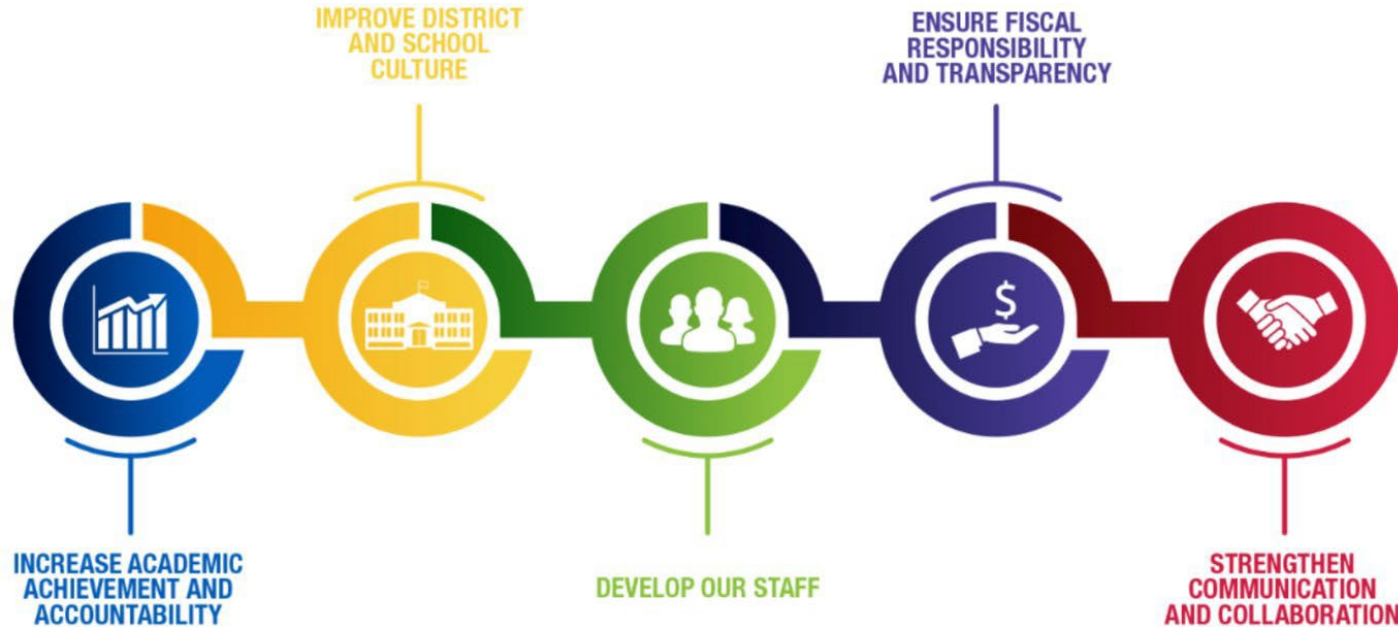


# James E. Groppi High School

- Alternative school offering GED02, Competency-based programming and Edgenuity coursework towards graduation



# 5 Priorities for Success



# Priority: Academic Achievement

---

- Individual plans for every student with an anticipated graduation date determined at enrollment
- Frequent check-ins, monitoring and personalized feedback
- Offer support in the evening and on weekends

# Priority: School Culture

- Reduction in Incident referrals
- Mural & Signage
- Relationship/community building



# Priority: Our Staff

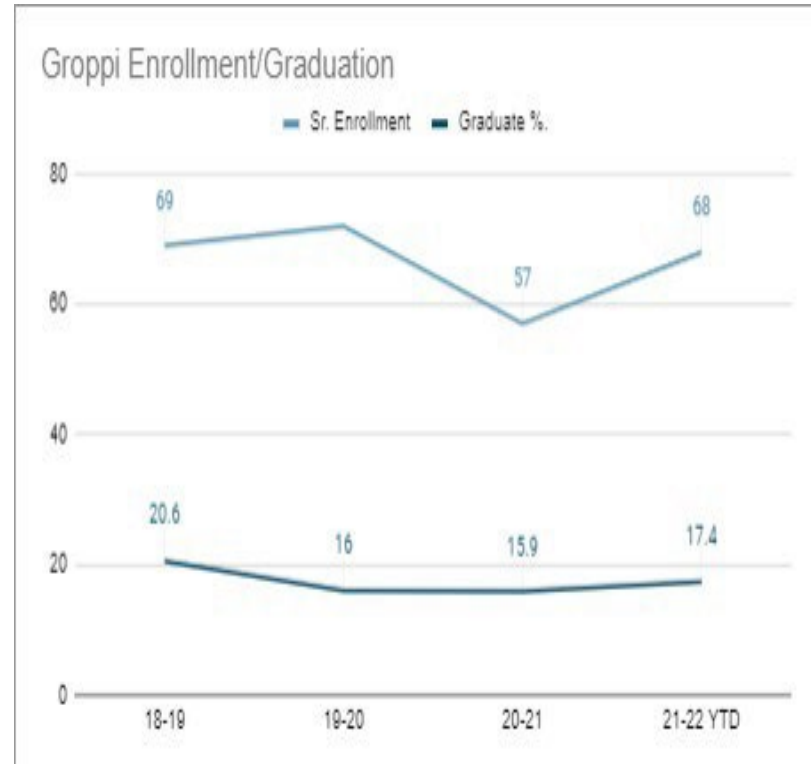
- Aligned mission and “all hands on deck” approach to graduation
- Staff are content specialists
- Use multiple district tools to support learning in traditional and non-traditional formats





# Priority: Fiscal Responsibility

- Increasing enrollment and completion rates with a rolling enrollment throughout the school year
- No deficit for last 3 years



# Priority: Communication and Collaboration



- Community events
- Partnerships and support outside the school
- Supporting students with community connections
- Working closely with leaders at traditional high schools as a safety net for all

# The Results/Next Steps

---

- Students reaching their graduation goals
- Continue to focus on supporting graduation for all students
- Continue to provide students with exposure to opportunities post graduation
- Increase supports offered to students



# Thank you.

**Presenters:**

Jennifer Smith, Ed.D., Regional Superintendent, Office of School Administration  
Syvell Hall, Asst. Principal, Groppi High School



Dr. Keith P. Posley, *Superintendent*

©2022 Milwaukee Public Schools • 12