



**MILWAUKEE
PUBLIC SCHOOLS**

Montessori Strategic Plan Update

January 11, 2024

Dr. Keith P. Posley
Superintendent



MILWAUKEE
PUBLIC SCHOOLS

Montessori Strategic Plan Update

Presenters

Abigail Rausch

Montessori Coordinator

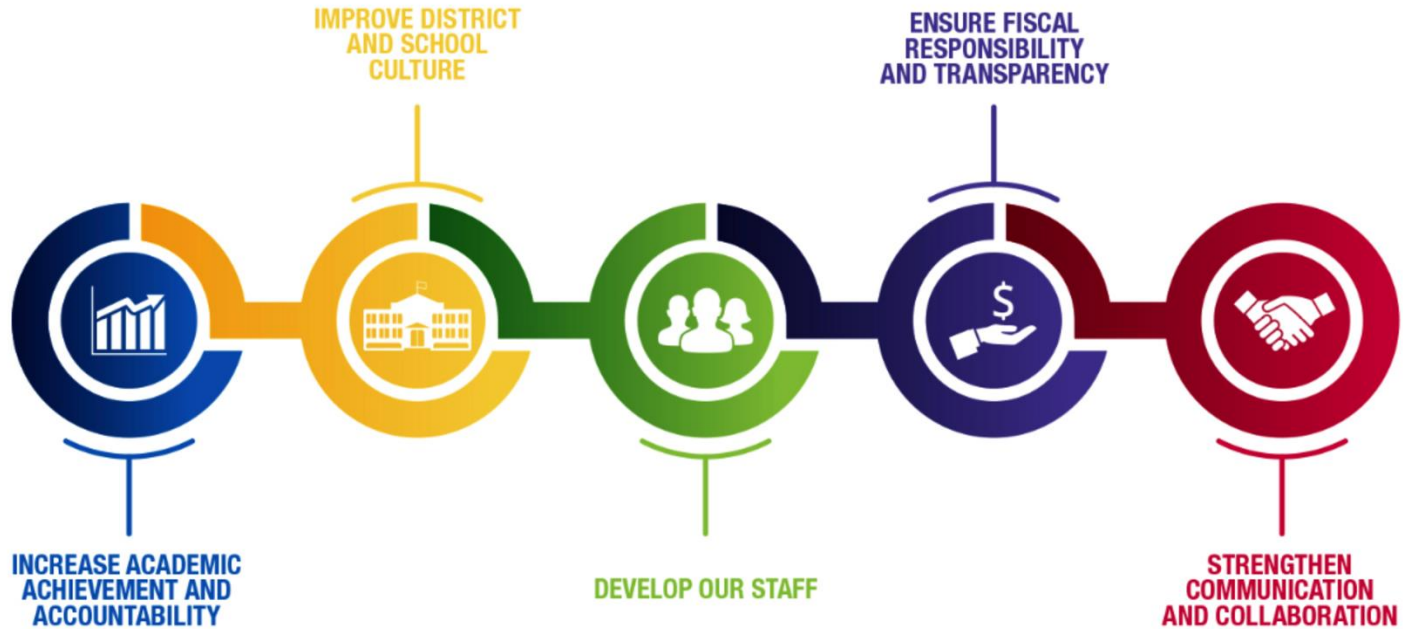
Department of Curriculum and Instruction

Andrea Corona

Principal

MacDowell Montessori School

Five Priorities for Success



Ambitious Instruction



MILWAUKEE
PUBLIC SCHOOLS



Formative
Practices



Explicit
Instruction



Engagement

Strategic Plan Driving Our Mission



Strategic Plan Driving Our Mission:

MPS is a diverse district that welcomes all students and prepares them for success in higher education, post-education opportunities, work, and citizenship.

Explicit Instruction and Formative Practices

Students will complete rigorous coursework

- Thoughtful work in Tier 1
- High-level questioning
- Academic discussions

Engagement

Students will feel emotionally and physically safe at school

- Supportive environments
- Respect differences
- Classroom management

Formative Practices and Explicit Instruction

Students will experience inclusive classrooms

- Supportive entry points for learning
- Support for diverse academic, social, and emotional needs of students

Montessori Strategic Plan Process

Completed Work

- Opened new Montessori model classrooms at Grant Gordon
- Hosted Wisconsin Montessori Association conference
- Updated Infinite Campus scoring calculations
- Conducted Montessori teacher sponsorship process
- Facilitated Montessori Advisory Committee meeting January 8, 2024

Current Work

- Holding monthly Montessori principal meetings
- Planning for 50 years of Montessori in MPS event
- Conducting teacher retention survey
- Preparing for Montessori secondary teacher credentialing courses
- Facilitating teacher work sessions for consistency in grading and secondary phase III development

Montessori Sponsorship Process

Elementary

- Montessori Training Center Northeast (MTCNE)
- Begins January 9, 2024
- 20 adult learners



Secondary

- Cincinnati Montessori Secondary Teacher Education Program (CMSTEP)
- Begins January 29, 2024
- 12 adult learners



MPS Montessori: 50 Years and Growing

**Saturday, February 10, 2024, 1–4 p.m.
at MacDowell Montessori**

The entire Milwaukee community is invited!

- See student demonstrations and performances
- Learn about the past, present, and future of Montessori
- Find out why Montessori offers a great education

MONTESSORI

1973 - 2023



50
YEARS / AÑOS

& GROWING
Y SEGUIMOS CRECIENDO

Bay View
Montessori
School

Craig
Montessori
School

MacDowell
Montessori
School

Fernwood
Montessori
School

Highland
Community
School

Barbee
Montessori
School

Maryland Ave.
Montessori
School

Riley Dual
Language
Montessori



**MILWAUKEE
PUBLIC SCHOOLS**

**Thank
You!**