

Resolution 2223R-002 Newcomer Center

October 13, 2022



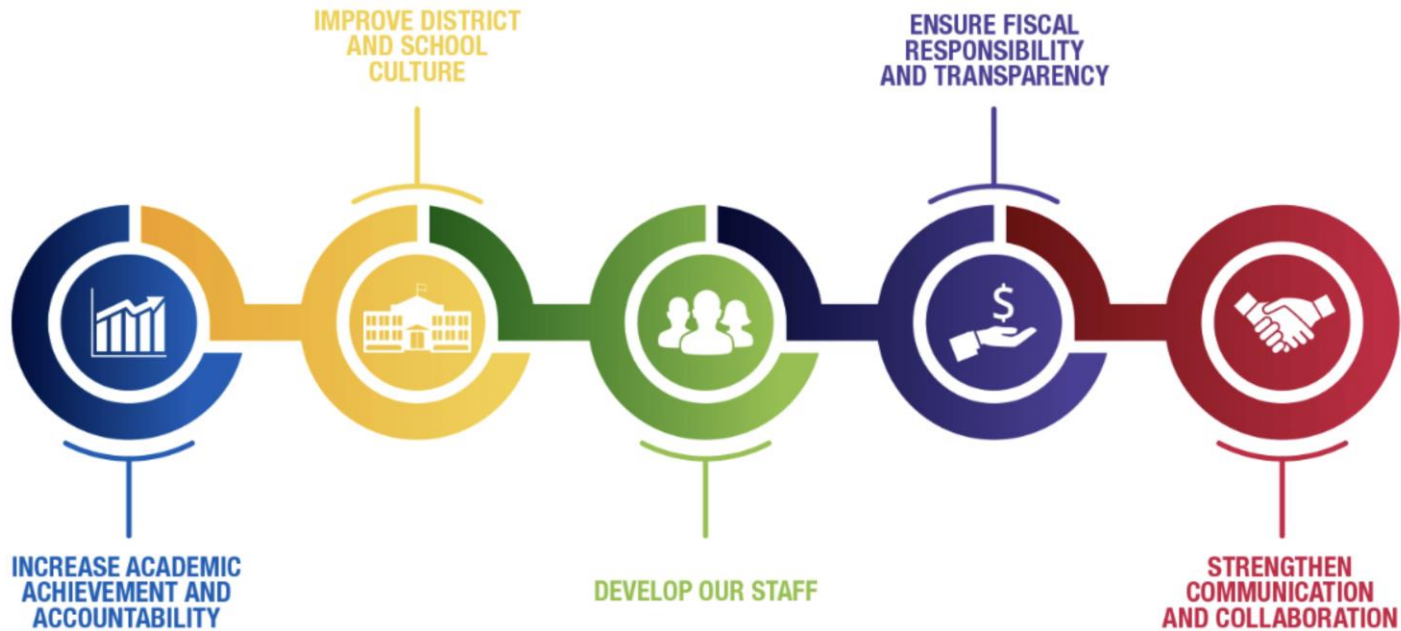
**MILWAUKEE
PUBLIC SCHOOLS**



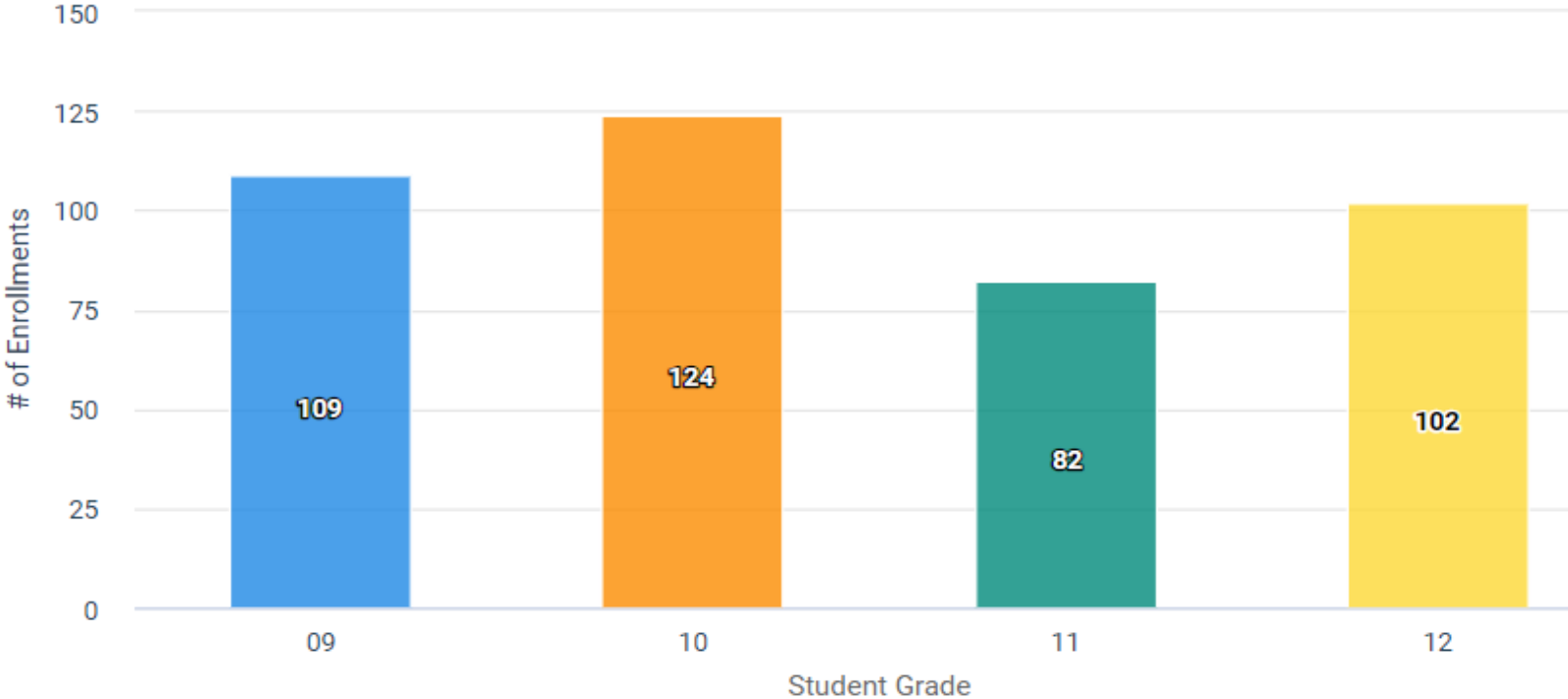
Presenters: Lorena Gueny, Director, Department of Bilingual Multicultural Education

Dr. Keith P. Posley,
Superintendent

Five Priorities for Success

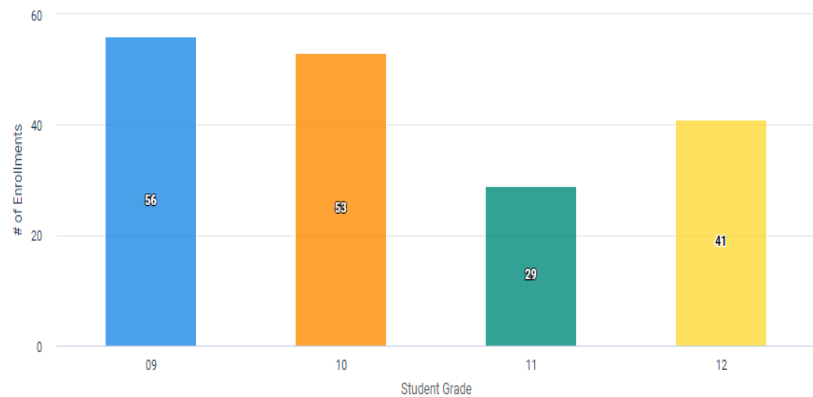


Total ELs by Grade Level at SDHS

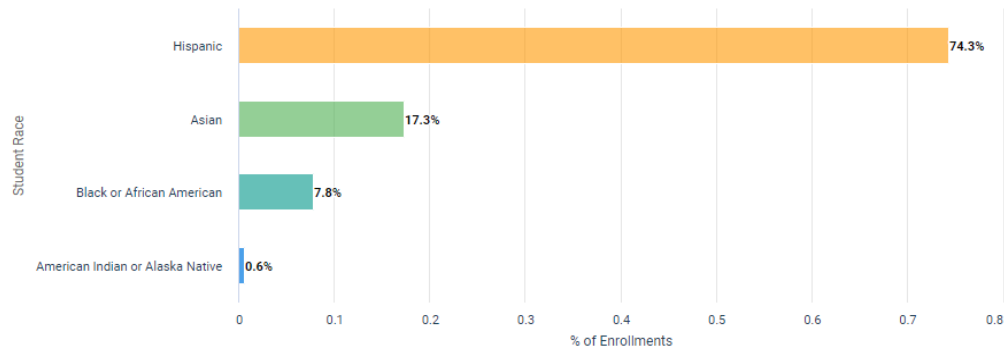


ELs at ELP 1 by Grade Level & Race at SDHS

The number of students currently enrolled in each grade level.

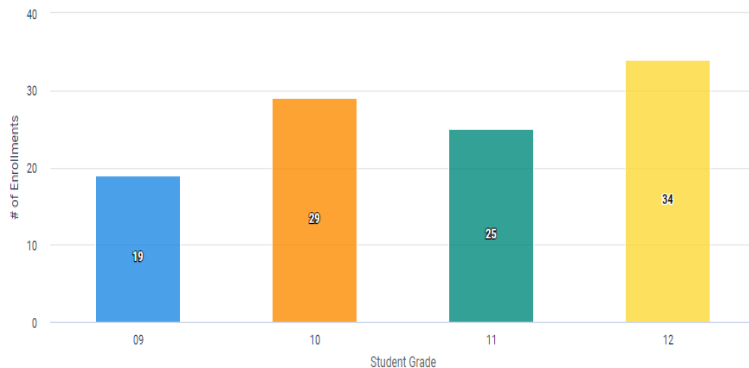


The percentage of students currently enrolled in each race group.

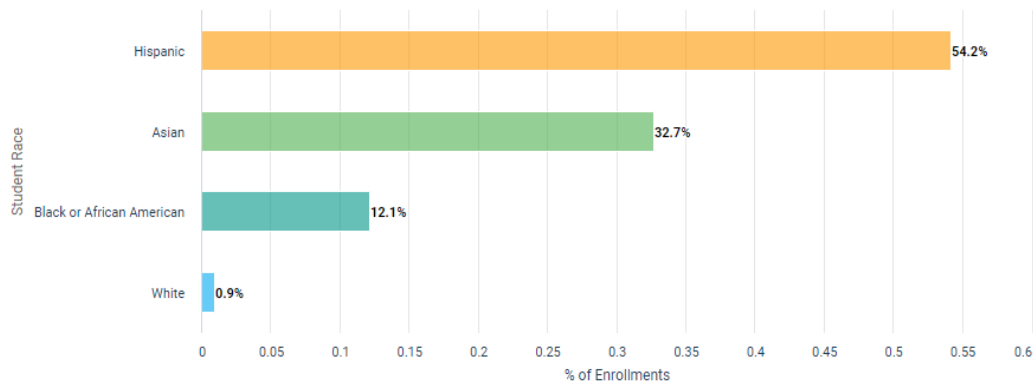


ELs at ELP 2 by Grade Level & Race at SDHS

The number of students currently enrolled in each grade level.



The percentage of students currently enrolled in each race group.



Languages at SDHS

- Spanish
- Karen
- Burmese
- Swahili

SOUTH DIVISION HS - 0032

| Language | # Students |
|---------------------------------|------------|
| Arabic | 2 |
| Burmese | 47 |
| Cushitic languages | 4 |
| English | 382 |
| French | 1 |
| Hmong; Mong | 6 |
| Karen Languages | 55 |
| Kayah, Eastern (Karenni, Karen) | 7 |
| Kinyarwanda | 3 |
| Maay | 1 |
| Malay | 4 |
| Pushto; Pashto | 2 |
| Sino-Tibetan languages | 2 |
| Somali | 8 |
| Spanish; Castilian | 274 |
| Swahili | 19 |
| Urdu | 1 |
| Total | 818 |

Goals

- Provide a welcoming environment for newcomers and their families
- Develop English Proficiency
- Celebrate their culture of origin
- Learn about the American Culture

Current Practice

- Welcome student and families
- Honor the families first language
- Provide ESL and sheltered instruction
- Support students' journey in a new country

Suggested Activities

- Have dedicated time for social and instructional language development
- Emphasize oral language development to reduce the anxiety of learning and communicating in a new language
- Use an academic portfolio to nurture self-determination and self regulation skills, so that students can determine, along with teachers/parents, their progress in meeting academic/social benchmarks.

Thank you.

Presenters:

Lorena Gueny, Director, Department of Bilingual Multicultural Education



Dr. Keith P. Posley, *Superintendent*

