

Regional Showcase - Citywide Region

June 10, 2021



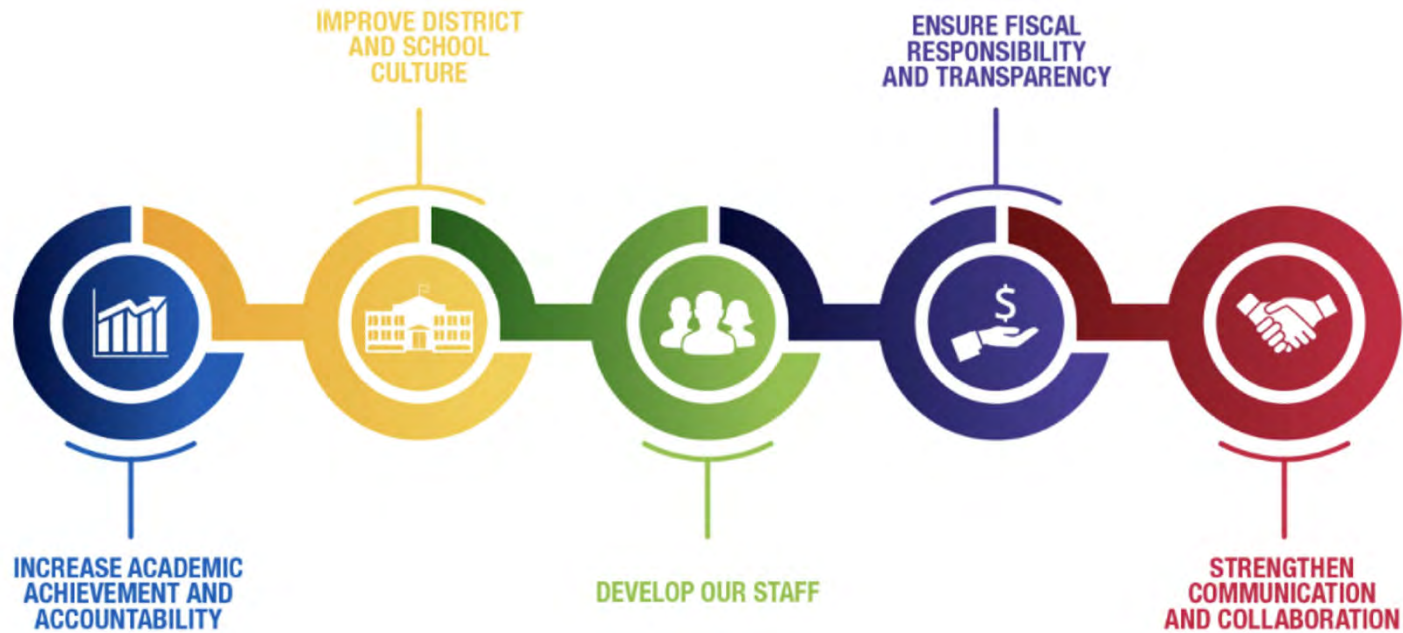
MILWAUKEE
PUBLIC SCHOOLS

Presenters:

Janel L. Hawkins, Senior Director, Office of School Administration

Dr. Keith P. Posley, *Superintendent*

Five Priorities for Success



Citywide Region

Elementary Schools

Dr. Martin Luther King Jr. -
Community School (Candidate)

Townsend - Neighborhood
School

River Trail – Agriculture Science

Middle Schools

Andrew Douglas- Neighborhood
School

Green Tree Preparatory – Charter
Lincoln CA – Arts Focus

Roosevelt - Arts Focus

King MY – IB

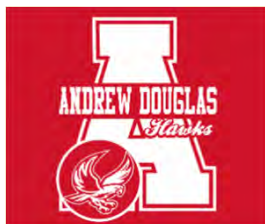
Morse – Gifted and Talented /Candidate
for IB

Wedgewood – IB



Citywide Region - Thank You!

Andrew S Douglas Middle School - Neighborhood School



Green Tree Preparatory Academy - Charter



Lincoln Center of the Arts - Arts Focus



Roosevelt Creative Arts Middle School - Arts Focus



King Middle Years - IB



Morse - Gifted and Talented /Candidate for IB



Wedgewood Park International School - IB



Dr. Martin Luther King Jr - Candidate for Community School



Townsend Street School - Neighborhood School



River Trail Agriculture Science Focus



Citywide Region Demographics

Our Scholars: 4,243

Our Schools: 10

Our Staff: 587

SwD: 21%

ELL: 5.7%



Citywide Region Data

Overall Score



Exceeds Expectations

Wedgewood MS

Overall Score



Meets Expectations[^]

[^]Outlier change in score from last year (see below)

Dr. King Elementary

Overall Score



Meets Few Expectations

Lincoln Center of the Arts

Morse MS: 54.2

River Trail: 60.1

Roosevelt MS: 60.9

Rufus King MY: 54.8

Townsend ES: 55.1



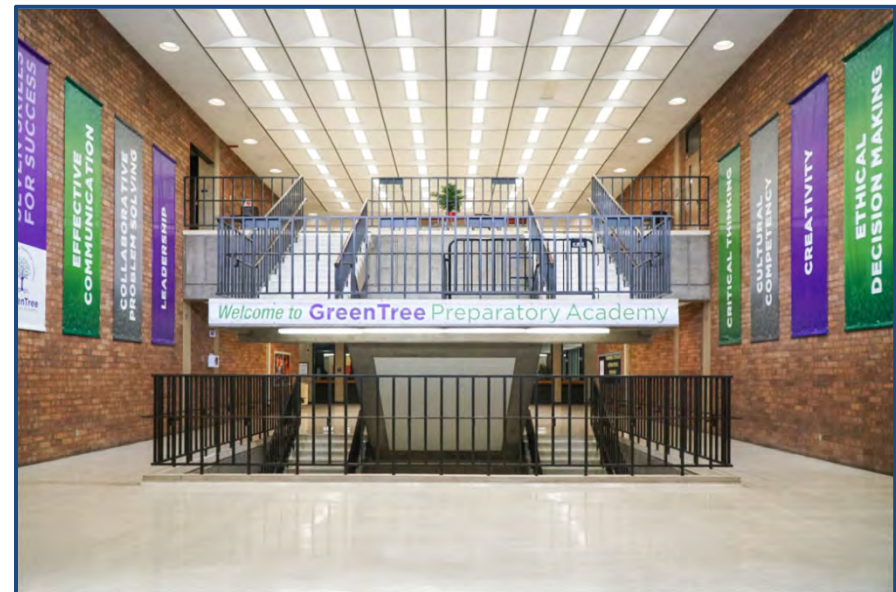
New School status:

Green Tree Preparatory and Andrew Douglas

School Spotlight: Green Tree Preparatory Academy

Our Mission:

GreenTree Preparatory Academy's mission is to build a body of student leaders who will lead or own tomorrow's businesses.



Seven Skills for Student Leaders

Core Values



High School Academies

GreenTree Academies



Katherine Johnson Academy of College Preparation

Students engage in rigorous college preparatory courses, including access to **early-college high school (ECHS)** or **dual enrollment programs**.



Charles Drew Academy of Science, Technology, Engineering & Mathematics

Students will engage in an **interdisciplinary, hands-on, and project-based learning curriculum**, including access to apprenticeships and internships.



Michelle Obama Academy of Business, Law, & Social Justice

Students will engage in a sequence in **business, law, and social justice**, including access to community projects, service learning, and internships.



GPA's Restorative Community



GPA's Restorative Community

School-wide Implementation

- ★ Staff Professional Development
- ★ Shared Agreements
- ★ Daily Student Restorative Circle
- ★ Weekly Staff Restorative Circle

GPA Shared Agreement

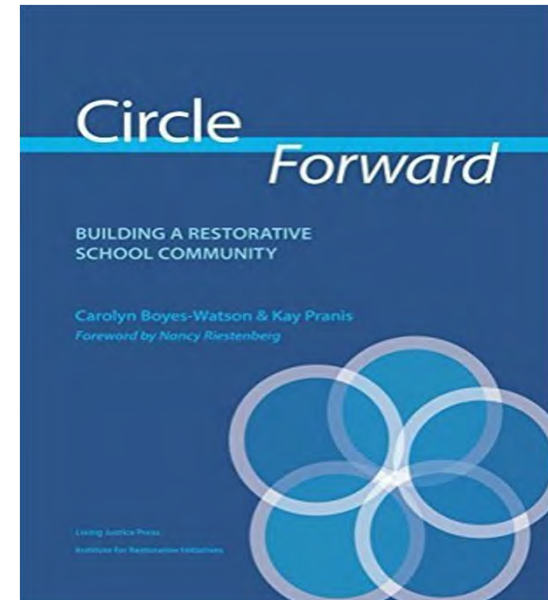
"At Green Tree Preparatory Academy, we value..."

...unconditional love, loyalty, honesty, creativity,
confidence, compassion, and hope.

"At Green Tree Preparatory Academy, we are..."

...dynamic, inclusive, caring, focused, dedicated,
thoughtful, genuine, and reflective.

We are Green Tree. Our roots run deep.



GreenTree Motto

“Our Roots Run Deep!
Plant your scholar at GreenTree
Preparatory Academy and watch
how they GROW!!!



Opportunities for Growth

- Increase enrollment efforts
- Retain highly qualified teaching staff
- Strengthening traditional middle schools
- Early literacy – foundational skills
- Increase first time passing rate in algebra
- Improve culture and climate
- Reduce absenteeism rate
- High school readiness



Thank you.



Dr. Keith P. Posley, *Superintendent*

©2021 Milwaukee Public Schools • 14