



**MILWAUKEE
PUBLIC SCHOOLS**

Music Education Update

October 2024

**Eduardo Galván
Interim Superintendent**



MILWAUKEE
PUBLIC SCHOOLS

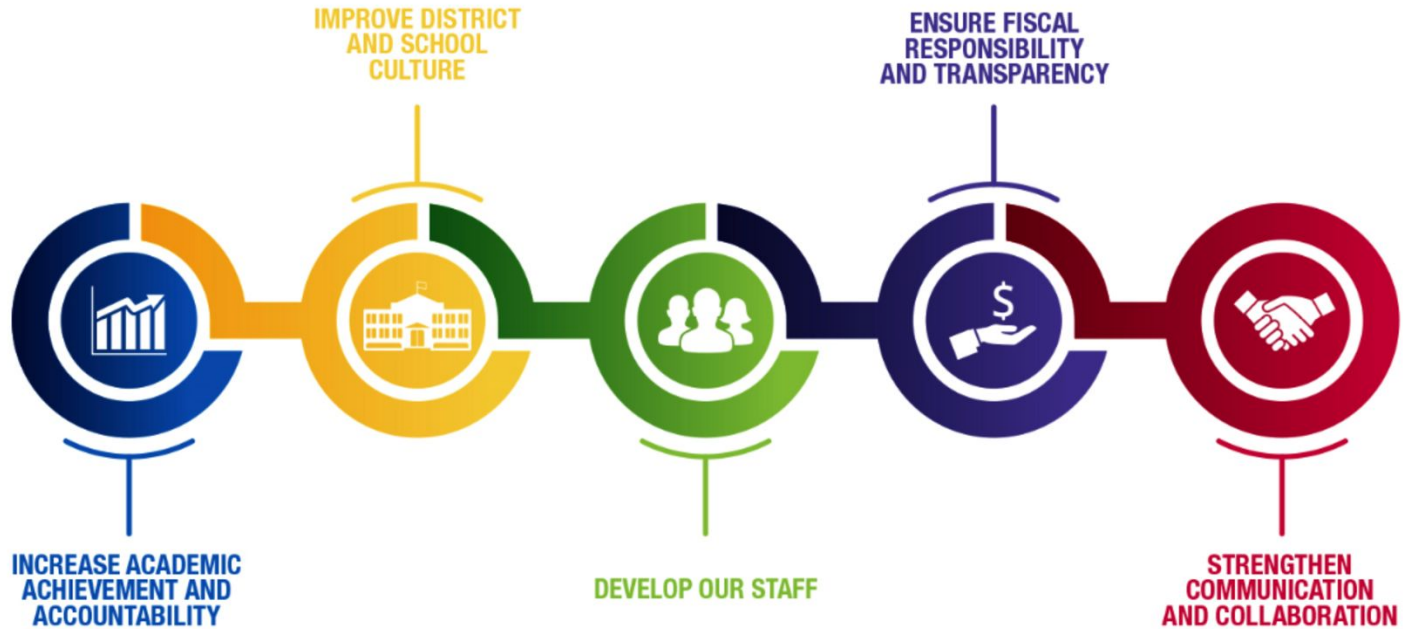
Music Education Update

Presenter

Sharie Garcia

Music Curriculum Specialist

Five Priorities for Success



Success = Alignment and Connection

MPS Strategic Plan



Academic Standard of Care

1. Build positive relationships with students and families.
2. Know what each student needs in each content area.
3. Conduct formative assessments regularly.
4. Differentiate instruction for students.
5. Instruct students at or above grade level.
6. Utilize scaffolding for students above and below grade level.
7. Design instruction using the content standards.
8. Use district-adopted/endorsed materials during instruction.
9. Center learning around student interests, voice, and choice.
10. Design learning experiences for students that are inquiry-based.

Ambitious Instruction

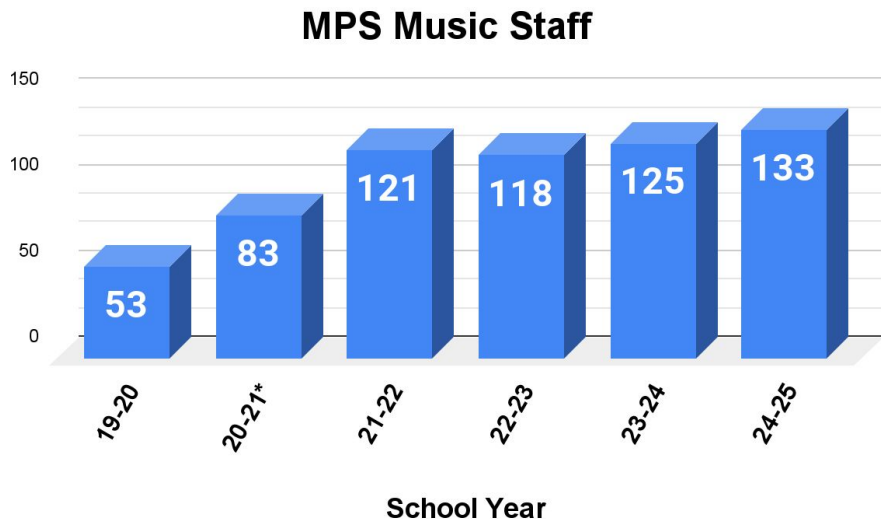


ONE initiative!

Music Staffing: 2024–25 School Year

Total of 133 music staff for 2024–25:

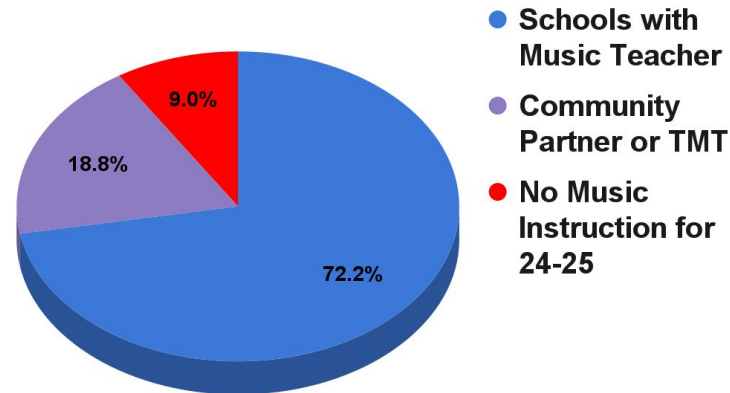
- 105 classroom teachers serving 95 schools
- 24 traveling music teachers serving 54 schools
- 2 music teacher leaders coaching 12 new teachers
- 2 instrument specialists serving all schools



Music Instruction: 2024–25 School Year

Music vacancies as of 9/30/24:

- 37 schools
- 27.4 FTE across the 37 schools
 - 7 full-time vacancies in a single school
 - 15 paired positions full-time serving 2 schools
- 23 schools supported by community music partners
- 2 schools supported by traveling music teachers
- 12 schools undecided



7th and 8th Grade Music Plan – Update

For 2024–25, the six largest K–8 schools each received a 0.5 FTE certified music teacher and additional TMT support:

- Parkside and Congress added band and music technology
- Fernwood and Fairview added orchestra and piano
- Hayes and Vieau added band, drum line, and banda

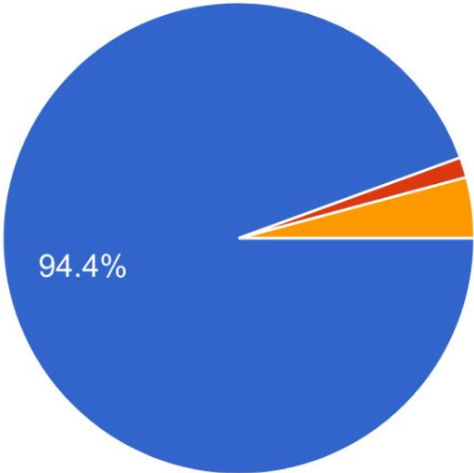
For the 2025–26 school year, four K–8 schools will receive a 0.5 FTE certified music teacher and additional TMT support to add ensembles for 7th and 8th grade:

- Schools will be eligible if they have space for an ensemble teacher
- Enrollment is determined by third Friday numbers
- Schools will be paired to create a full-time position based on community music survey results

Principal Survey Results as of 10-3-24

Does your music teacher have a dedicated classroom?

72 responses

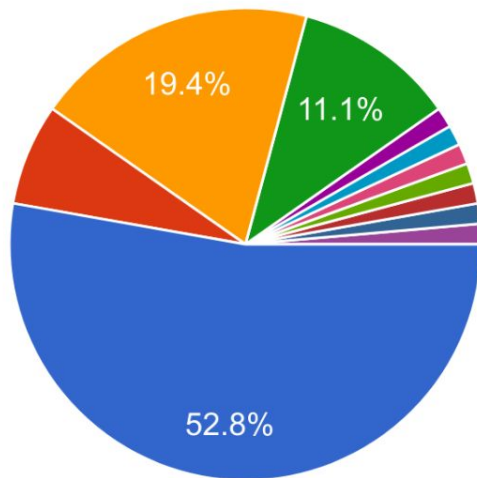


- Yes
- No - teacher is on a cart
- Music has a shared space as the teacher is part-time

Principal Survey Results as of 10-3-24

Please answer below regarding minutes of instruction for music:

72 responses



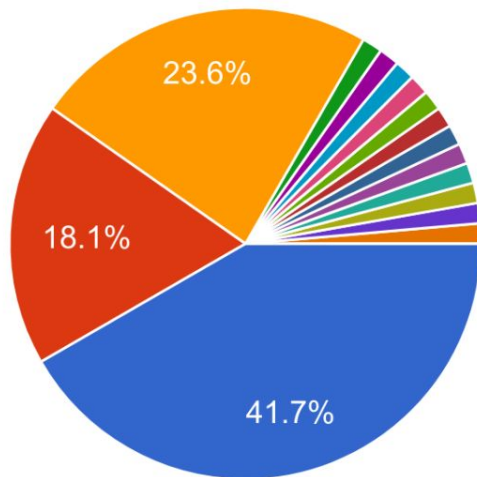
- My school is meeting the required min...
- My school is not meeting the required...
- My school does not have a music teac...
- My school is using contracted service...
- I also have a para teaching music in t...
- 1.0 FTE music vacancy. Sub currently...
- YES For all grades except 3rd grade....
- Close to minutes with full-time teacher.

▲ 1/2 ▼

Principal Survey Results as of 10-3-24

Does your school budget to meet the minimum required amount for Traveling Music - 1 hour for every 100 students 4th grade and above?

72 responses



- Yes
- No
- My school does not have 100 student...
- Not yet but will once 6 additional hour...
- 4th and above ? for what subjects sho...
- Not in budget.
- I wasn't aware of this information.
- I don't understand what you're asking...

▲ 1/2 ▼

Music Feeder Pattern Data Study

How can we adjust our funding model to put traveling music supports where they will serve the most students?

- Where do 5th grade music students attend 6th grade?
- Where do 8th grade music students attend 9th grade?

When a pattern is identified, we can create purposeful alignment that matches the traveling music supports at the elementary, middle, and high school levels to strengthen our music programs.

2024–25 District Music Events



Music Department 2024–25 Events

Departamento de Música
Eventos de 2024–25

DECEMBER
14
DICIEMBRE

Battle of the Drum Lines
Batalla de tambores
Saturday/Sábado, 12PM
Rufus King High School

MARCH
1
MARZO

WSMA Solo & Ensemble Contest
Concurso de solistas y conjuntos de
WSMA
Saturday/Sábado, 8AM – 4PM
Rufus King High School

APRIL
22–25
ABRIL

WSMA Large Group Festival
Festival de grupos grandes de WSMA
Milwaukee Youth Arts Center

mpsmke.com/music





MILWAUKEE
PUBLIC SCHOOLS

**Thank
You!**



**MILWAUKEE
PUBLIC SCHOOLS**

Questions?