

Update with Possible Action on Wisconsin Student Assessment System Results from Spring 2022

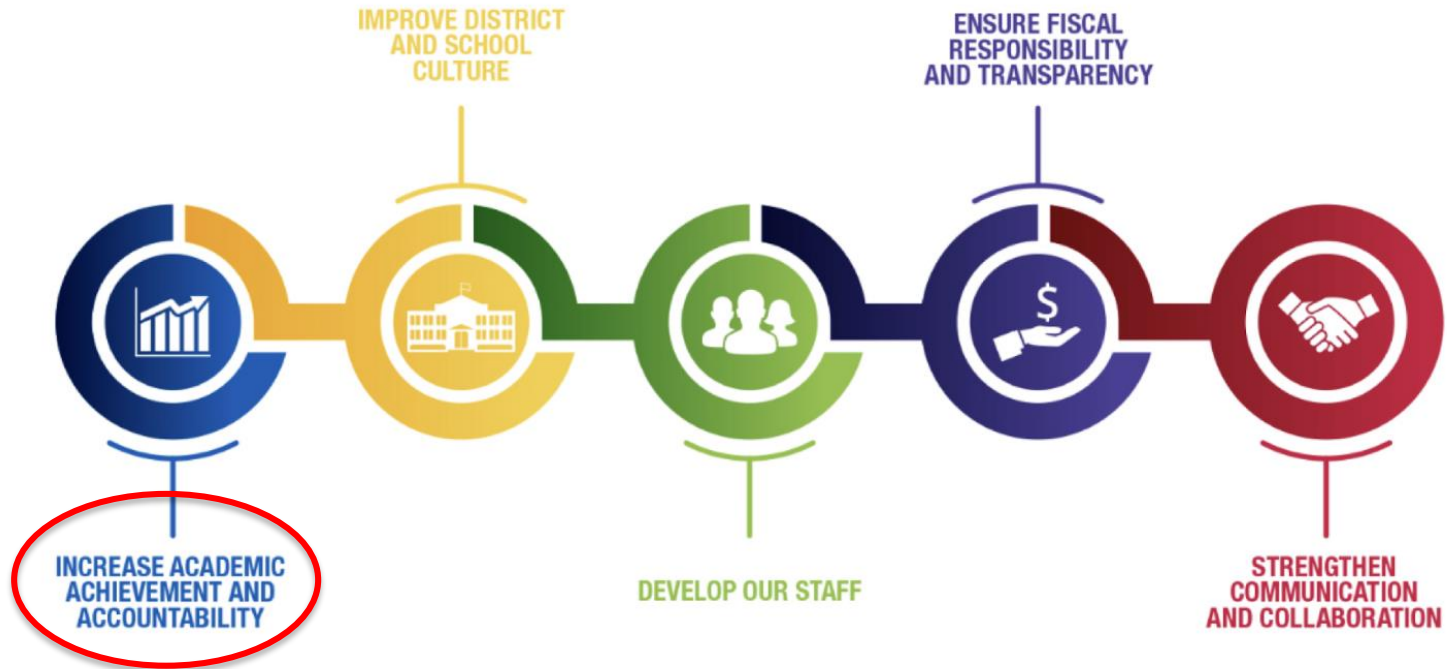
November 3, 2022



Presenters: Melanie R. Stewart, Ph.D., Director Research, Assessment and Data

Dr. Keith P. Posley,
Superintendent

Five Priorities for Success

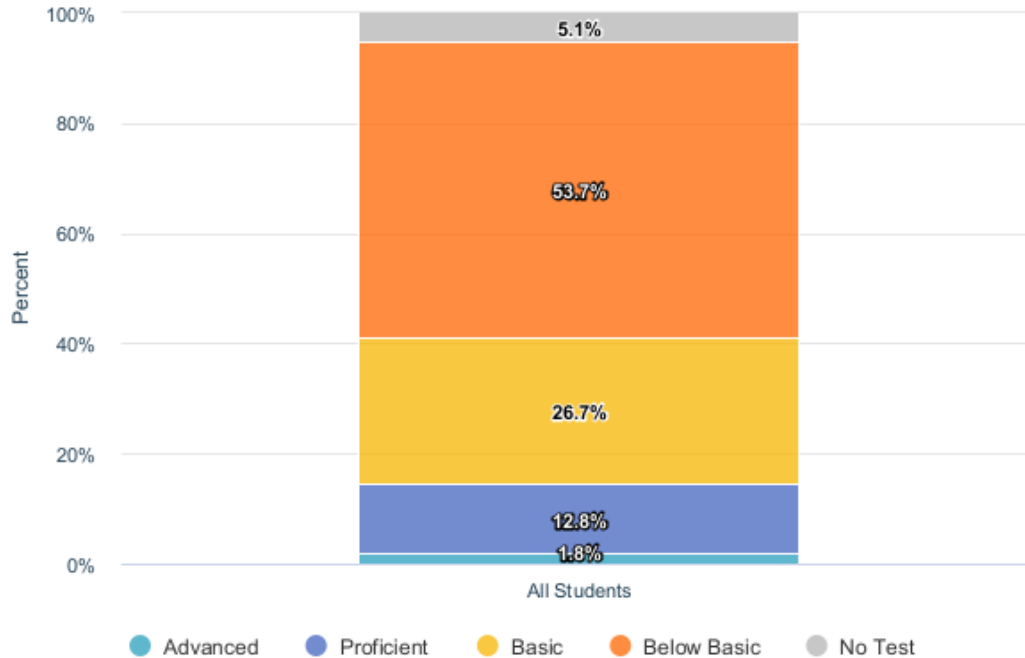


Highlights



MPS improved scores in all subjects and all tests (Wisconsin Forward Exam, ACT Aspire, ACT) from spring 2021 to 2022!

Forward English Language Arts



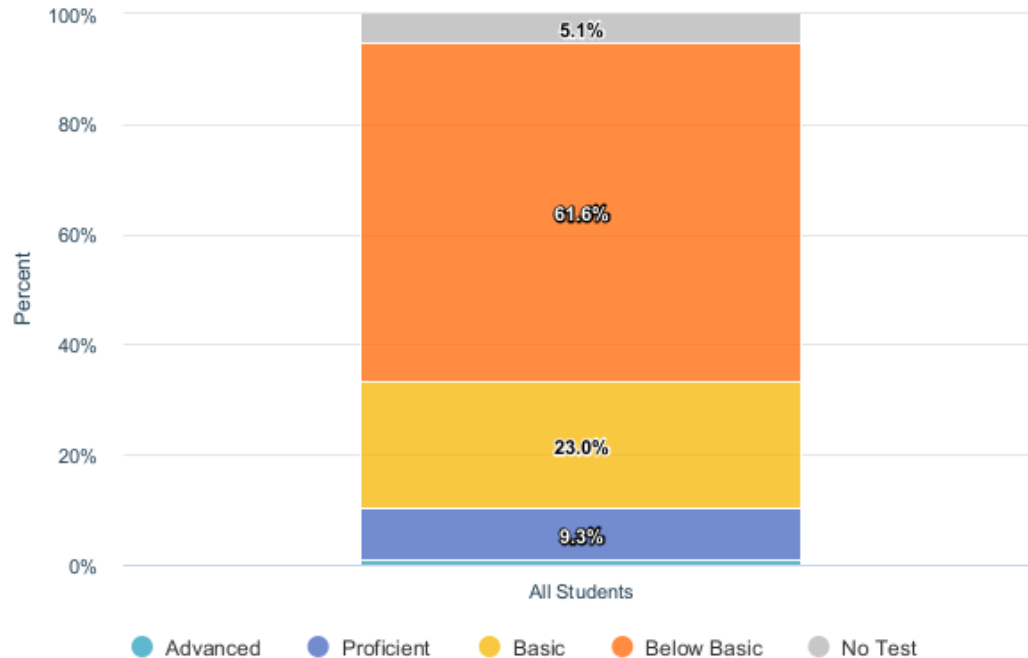
- **Forward ELA – Increase of 7.3% from Spring 2021**
- **Students in grades 3-8**
- **94.9% Test Participation**

Schools that Improved from 2018-19 to 2021-22 in Forward ELA

Schools That Improved	Region	Schools That Improved	Region
Auer	Central	Hi-Mount	Central
Bay View Montessori	East	I.D.E.A.L	East
Bethune	Central	Keefe	Central
Carver	East	Kluge	Northwest
Cass Street	East	Lancaster	Northwest
Clarke Street	Central	MacDowell Montessori	High School
Craig Montessori	Northwest	Maryland Montessori	East
Eighty-First Street	Northwest	Milw. French Immersion	Central
Elm	East	Roosevelt	Citywide
Emerson	Northwest	Sherman	Central
Engleburg	Northwest	Story	Central
Fratney	East	Stuart	Northwest
Grantosa	Northwest	Zablocki	Southwest
Highland	Contracted		



Forward Math



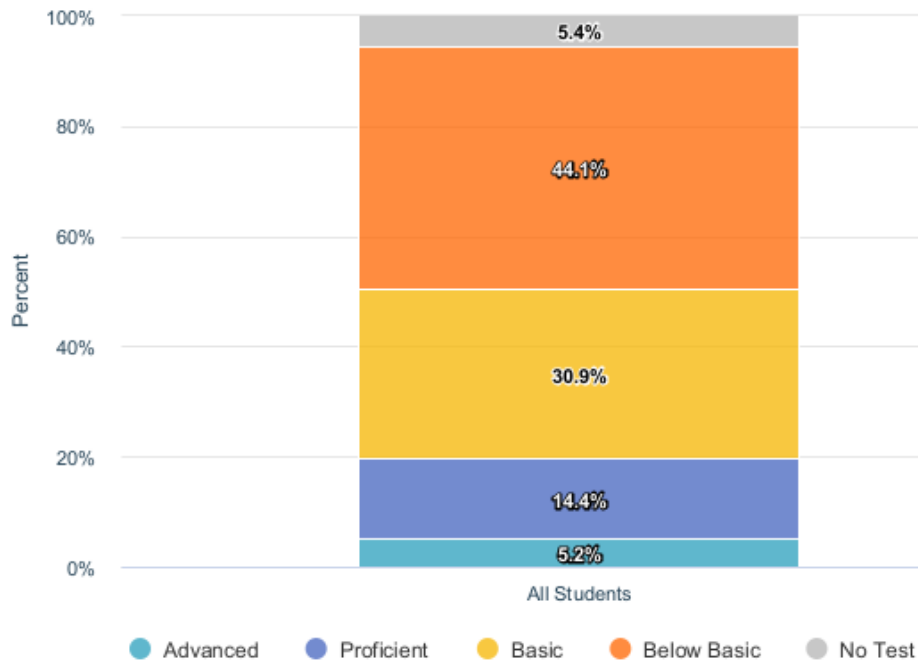
- **Forward Math – Increase of 6.2% from 2021**
- **Students in grades 3-8**
- **94.9% Test Participation**

Schools that Improved from 2018-19 to 2021-22 in Forward Math

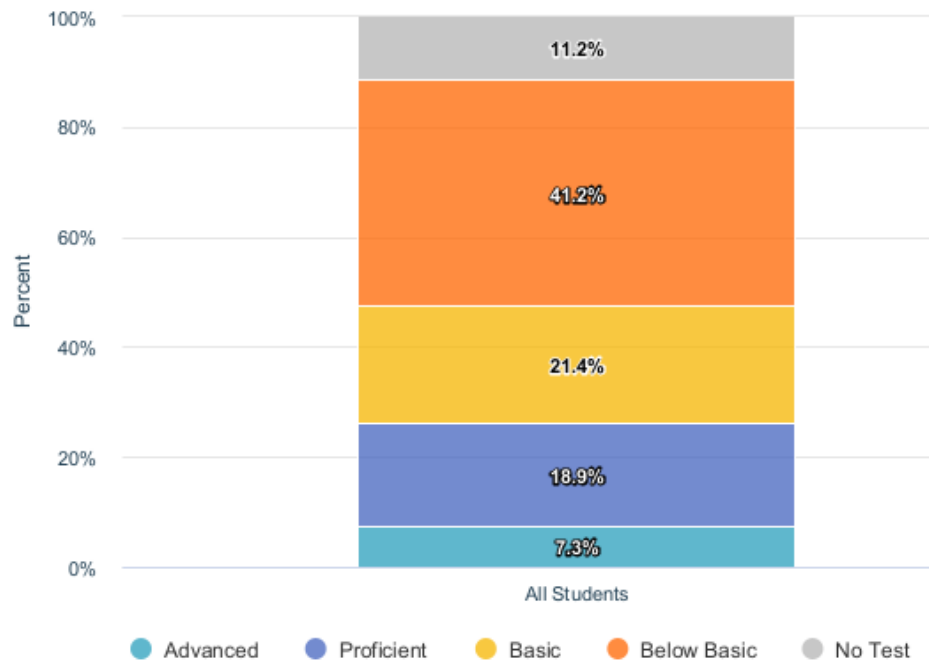
School That Improved	Region
Barbee	Central
Browning	Northwest
Engleburg	Northwest
Fratney	East
Goodrich	Northwest
Grantosa	Northwest
Kilbourn	Northwest
Lancaster	Northwest
MacDowell Montessori	High school
Roosevelt	Citywide
Stuart	Northwest
Zablocki	Southwest



Forward Science and Social Studies



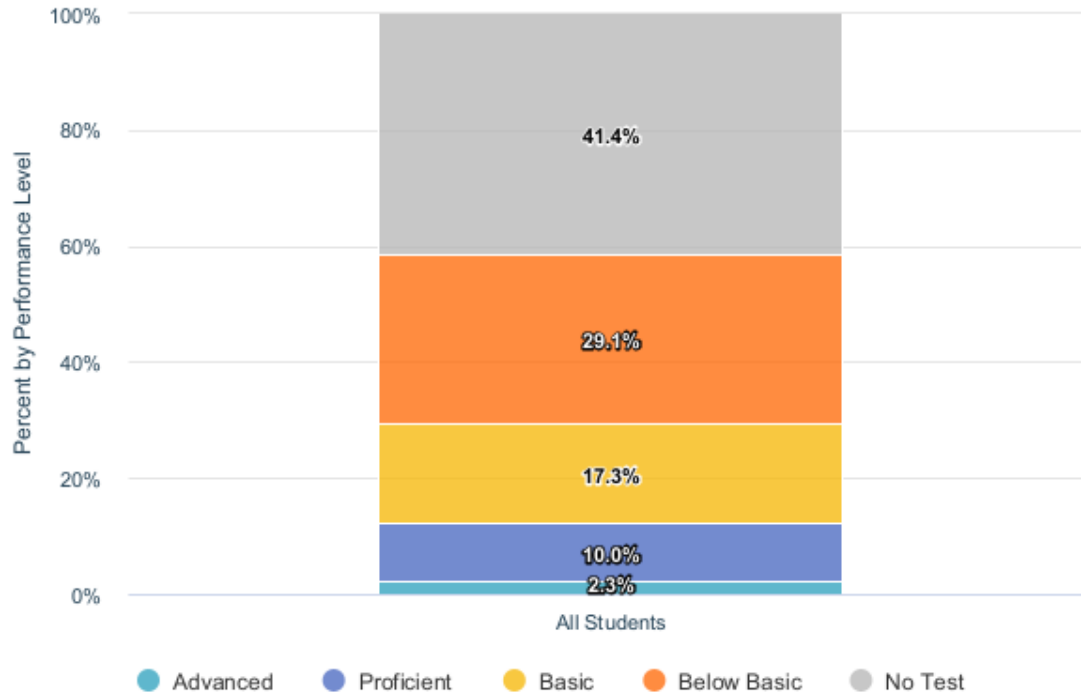
Science Grades 4 & 8



Social Studies Grades 4, 8 & 10

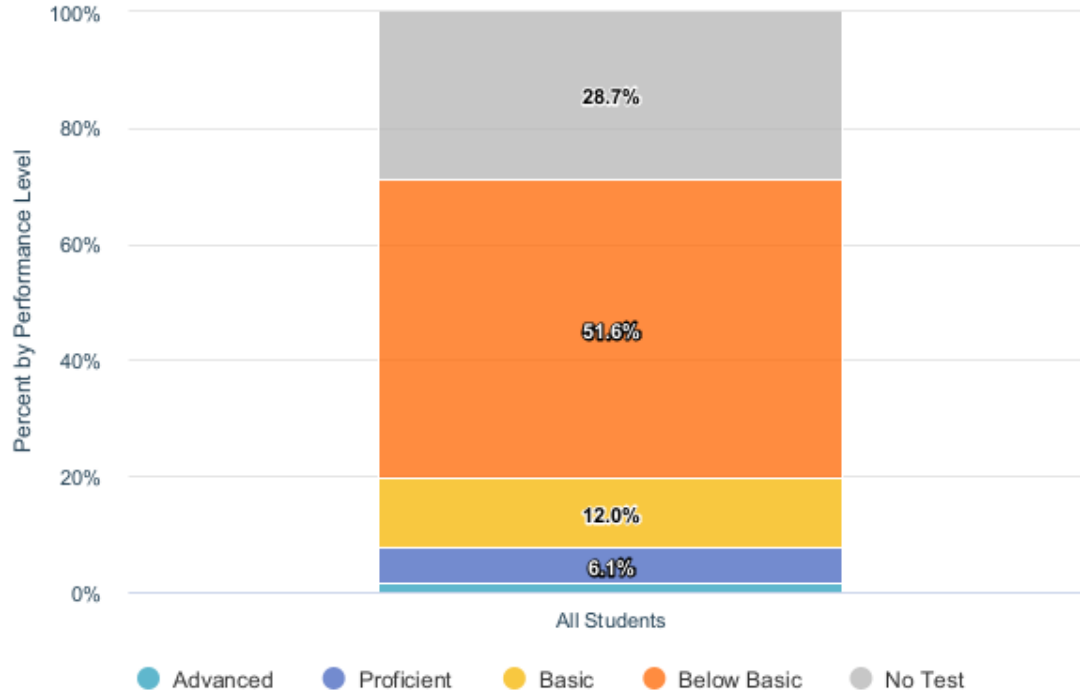


ACT Aspire English Language Arts



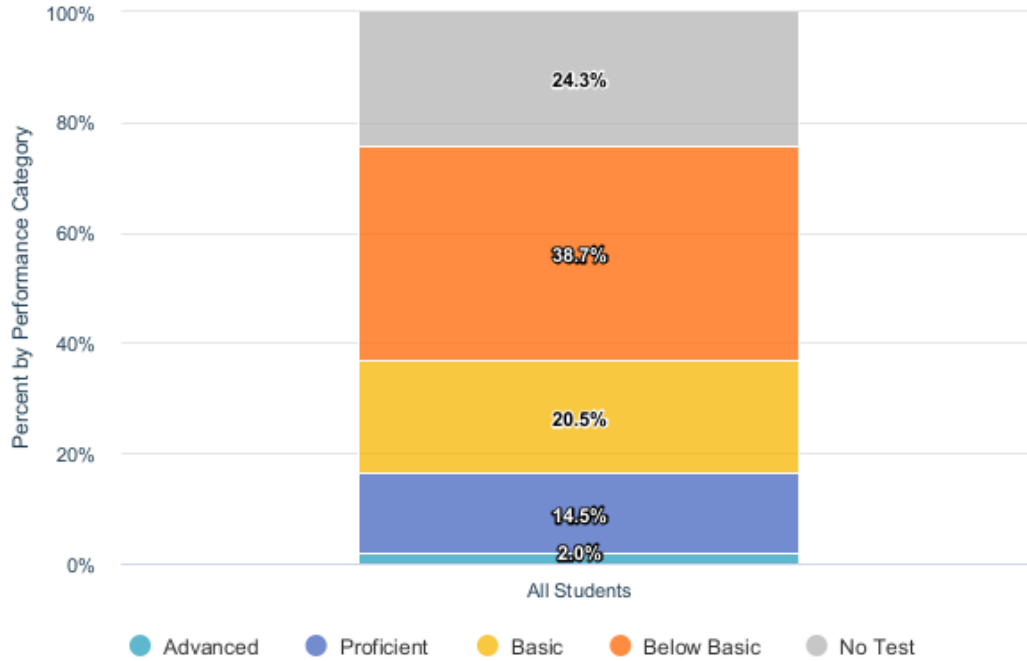
- **ACT Aspire – ELA an increase of 9.8% from 2021**
- **Students in Grades 9 and 10**
- **58.6% Test Participation**
- **ELA requires the completion of 3 subtests for a score to be determined.**

ACT Aspire Math



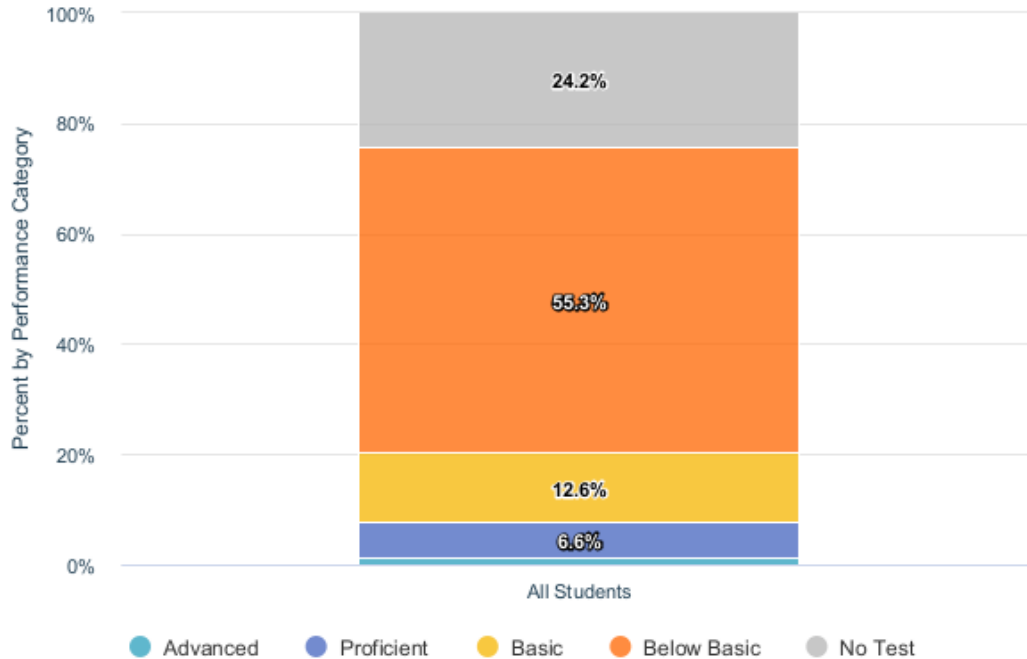
- **ACT Aspire – Math an increase of 6.4% from 2021**
- **Students in Grades 9 and 10**
- **71.3% Test Participation**

ACT English Language Arts



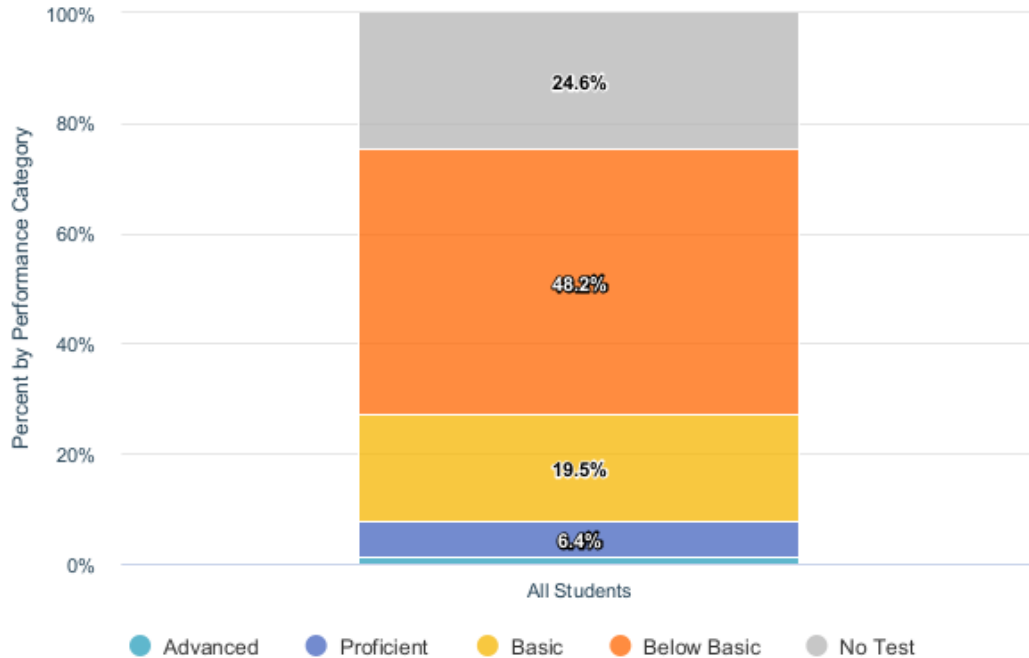
- **ACT – ELA an increase of 4% from 2020-21**
- **Students in Grade 11**
- **75.7% Test Participation**
- **ELA requires the completion of three subtests for a score to be determined**

ACT Math



- **ACT – Math an increase of 2.8% since 2020-21**
- **Students in Grade 11**
- **75.8% Test Participation**

ACT Science



- **ACT – Science – An increase 1.6% from 2020-21**
- **Students in Grade 11**
- **75.4% Test Participation**

Next Steps

- Continue to implement Ambitious Instruction: Accelerating Learning
- Monitor progress with local assessments
- Celebrate our movement toward minimizing unfinished learning!



Thank you.



Dr. Keith P. Posley, *Superintendent*

