



**MILWAUKEE
PUBLIC SCHOOLS**

District Updates Multi-Tiered System of Supports and Interventions

May 9, 2023

Dr. Keith P. Posley
Superintendent



MILWAUKEE
PUBLIC SCHOOLS

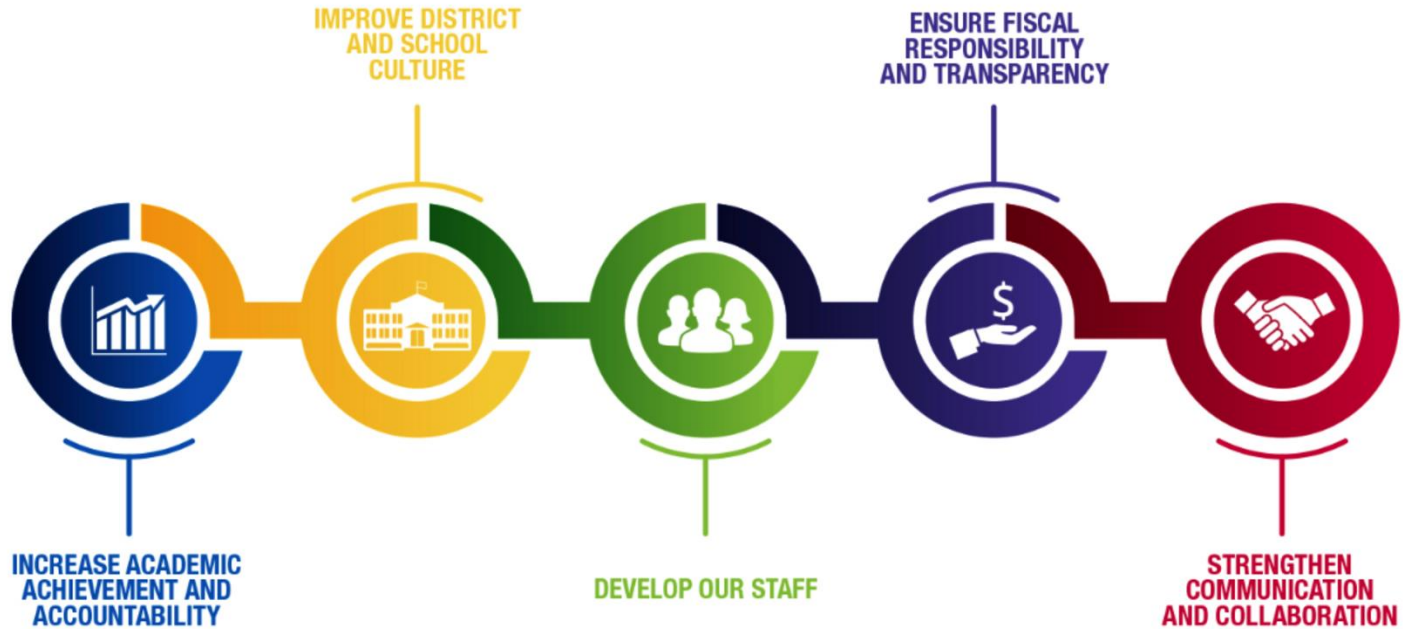
**District Updates
Multi-Tiered
System of Supports
and Interventions**

Presenters

Jon Jagemann
District Discipline Manager

Kristin Annen
Rebecca Longoria
School Social Worker
Supervisors

Five Priorities for Success



Proactive Supports & Interventions

- Provided Culture, Climate and Alternatives to Suspension Toolkit – repairing harm and addressing conflict within restorative practices.
- Strategies include holding a restorative conversation with colleagues and students.
- Shared Culture, Climate & Alternatives to Suspension Toolkit feedback survey.
- Held District Climate Data Gallery.

Proactive Supports & Interventions

- Tier 2 and Tier 3 Interventions

	Students
Check-In/Check-Out (CICO)	2,293
Individualized CICO	586
Social Academic Instructional Group	1,766
Behavior Assessment/Intervention Plan (BAIP)	158
FBA/BIP	262
Educational Wraparound and RENEW	159
Total Interventions	5,224

Proactive Supports & Interventions

- Administrator Alternatives to Suspension March

Conference	Counsel	Detention	Mediation
213	1756	199	98
Referral to BIT	Support Staff	Repairing Harm Circle	Restorative Conversation
19	41	18	65

- Administrator Alternatives to Suspension April

Conference	Counsel	Detention	Mediation
114	1111	104	61
Referral to BIT	Support Staff	Repairing Harm Circle	Restorative Conversation
6	14	8	60

Student, Staff, & Community Collaboration

- District Equity Leadership Team (DELT) practiced protocols by holding a conversation about current events and connections to reality here in MPS.
- Courageous Conversations about Race timeline

Timeline	Sessions Held
March 2021-July 2021	19
August 2021-July 2022	23
August 2022- February 2023	34
All Time	76

Student, Staff, & Community Collaboration

- Student Leadership Summit
- 215 students attending hybrid summit
- School discussions on three topics:
 - Equity
 - District culture & climate
 - Victory over Violence

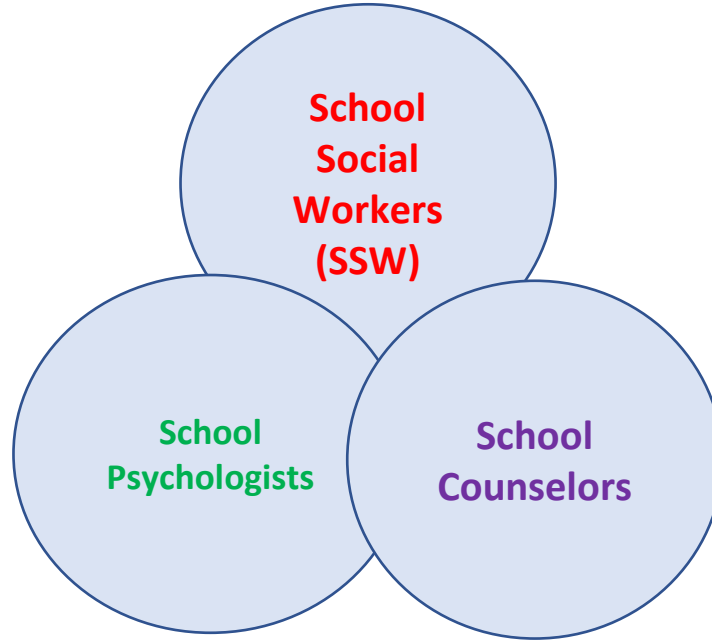
Student, Staff, & Community Collaboration

- 77.5% of students indicated they liked summit format.
- 90% of students indicated they found the topic clear and relevant.
- Over 50% of students indicated topic was a high-level concern for them.
- Students looking for conversations to continue with additional staff and students engaging.
- Preference for future topics included school lunch, mental health, jobs/internships, and racial equity.

Next Steps

- Provide May Culture, Climate and Alternatives to Suspension Toolkit focus on functions of behavior when determining appropriate intervention.
- Hold Community Conversation on May 17, 2023.
- Distribute Annual Discipline Survey.
- Facilitate My Brothers Keeper 2-day seminar.

Overlapping Pupil Services Roles



SSW Mandated Services

All services are provided through a culturally competent lens which include:

- Attendance/Truancy
- Mandated Reporter
- Suicide/Non-Suicidal Self-Injury Assessments
- Homeless Education Contact
- Special Education
- Behavior Support/Trauma Informed Care
- Social Emotional Learning/Mindfulness/Restorative Practices

SSW Therapy Services

- School Community Partnership for Mental Health (SCPMH)
 - ✓ 39 schools
 - ✓ 6 community partners
 - ✓ School based services
 - ✓ 369 students being actively services
- Teletherapy
 - ✓ Started November 2022
 - ✓ Available to all students at all schools
 - ✓ Outside of school hours
 - ✓ Short term 6 to 8 sessions
 - ✓ 3 contracted agencies

SSW Supporting Mental Health

- Cognitive Behavioral Intervention for Trauma in Schools (CBITS)
- Dialectical Behavior Therapy (DBT)
- Grief Support
- Non-Special Education Needs Counseling (Non-SEN)



**MILWAUKEE
PUBLIC SCHOOLS**

**Thank
You!**