

Report on Standardized Testing

March 11, 2021



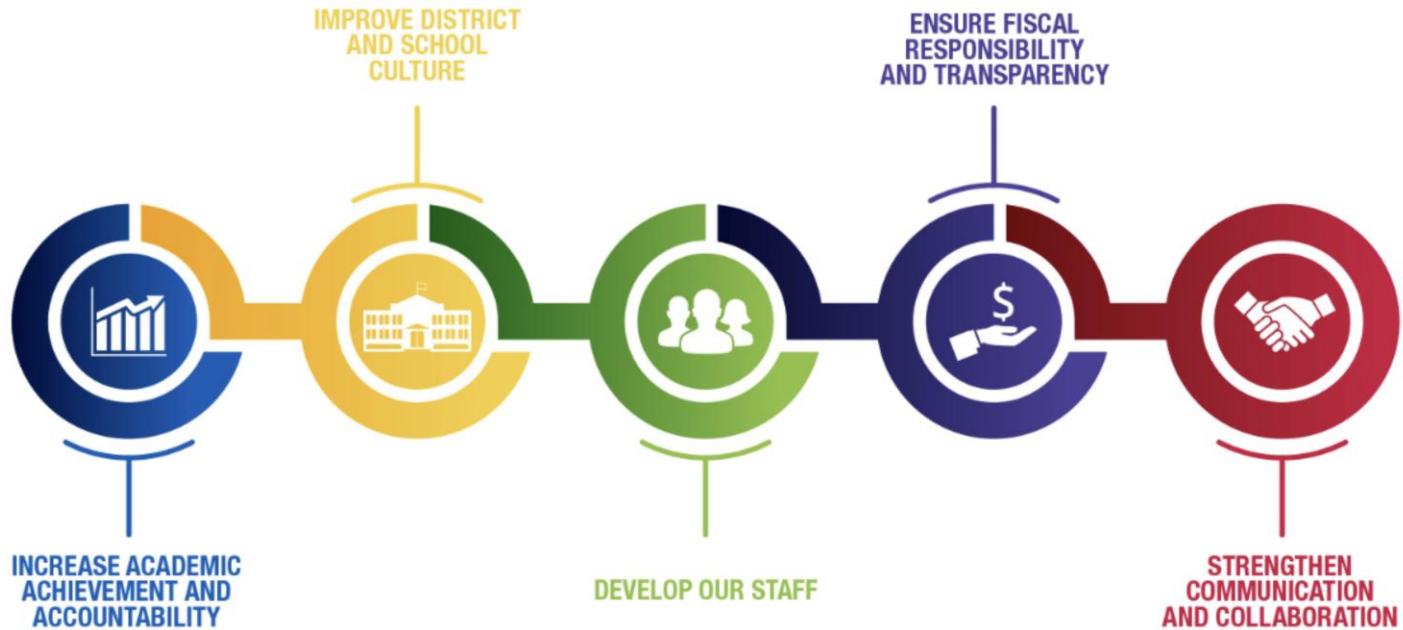
MILWAUKEE
PUBLIC SCHOOLS

Presenters

Research, Assessment and Data

Dr. Keith P. Posley,
Superintendent

Five Priorities for Success



Framing the Presentation

- The presentation outlines the costs and time associated with the administration of standardized tests.
- Data was gathered by a survey that was completed by schools.



Estimated Annual Costs – State and Federal

Test	Estimated annual cost	Vendor
ACCESS for ELLs	\$0	DRC & WIDA
ACT Aspire	\$0	ACT State Testing Administration
ACT Plus Writing	\$0	ACT State Testing Administration
Dynamic Learning Maps	\$0	Accessible Teaching, Learning, and Assessment Systems (ATLAS)
PALS	\$0 (Reimbursed)	Illuminate Education
WIDA Screener	\$0	DRC & WIDA
Wisconsin Forward Exam	\$0	DRC



Estimated Annual Costs – District

Test	Estimated annual cost	Vendor
Advanced Placement	\$132,180	College Board
Civics	Included in Qualtrics annual cost	District Developed
CogAT	\$37,247	Riverside Insights
Grade 8 Writing/Select Criteria Admissions	\$16,625	Adaptera
International Baccalaureate	\$202,809	International Baccalaureate
PSAT	\$25,000	College Board
Tier 2 (e.g., Renaissance Learning)	Included in cost of universal screening	Renaissance Learning
Tier 3 (e.g., easyCBM, aimsWEB)	\$2,500	Varied
Universal Screening (e.g., Star, IDEL)	\$722,526	Renaissance Learning



Cost for Duplication

- The most common assessment cost for duplication is test tickets: Estimated to be \$436 to \$2,150 depending on multiple tickets per page or one ticket per page.
- Some schools print individual student reports instead of sending electronically (i.e., Star, CogAT, ACT Aspire).
- Costs for other copies are at the discretion of each school depending on their preference for physical copies versus electronic (e.g., test manuals, training presentations).



Time for Professional Development

- Professional development is video-based along with manuals for administration and accommodation.
- Professional development ranges from 30 to 90 minutes depending on the assessment and grade level.



Test Preparation

- Three schools indicated that they purchased test preparation materials.
- Test preparation for how to navigate the assessment ranges from 5 – 30 minutes/year (e.g., test format and question types) during school.



Assessment Report



How Data is Reported

- Median is reported to allow for outlier data in each area.
- The median or middle value is less skewed by outlier data and more representative of most schools.



ACCESS for ELLs

- Group administered and taken online in grades 1-12 (The writing domain is on paper for students in grades 1-3).
- Kindergarten and students with significant disabilities are assessed one-on-one.
- Typically, administered to 9,000+ students annually in 122 schools.



ACCESS for ELLs –Time

	Test administration	Make-ups	Test preparation	Staff hours to implement	Library/ media center closure
Median reported by schools	27 hours	18 hours	2 hours	0 hours	0 hours
# of schools reporting	94 schools	73 schools	58 schools	41 schools	27 schools

ACCESS for ELLs – Reported Costs

	Printing for testing administration	Printing for professional development	Costs for test preparation
Median reported by schools	\$1.00	\$0	N/A
# of schools reporting	52 schools	29 schools	0 schools



ACT Aspire

- Measures what students have learned in the areas of English, reading, math, science, and writing.
- Administered in small groups for students with disabilities or English learners.
- Typically, administered to 9,000+ students annually in 39 schools.



ACT Aspire –Time

	Test administration	Make-ups	Test preparation	Staff hours to implement	Library/ media center closure
Median reported by schools	5 hours	10 hours	3 hours	5 hours	6 hours
# of schools reporting	27 schools	26 schools	22 schools	17 schools	17 schools

ACT Aspire – Reported Costs

	Printing for testing administration	Printing for professional development	Costs for test preparation
Median reported by schools	\$12.00	\$0.00	N/A
# of schools reporting	24 schools	17 schools	0 schools



ACT with Writing

- Measures college readiness in reading, math, English, science, and writing.
- Group administered; some small group administration.
- Typically, administered to 3,000+ students annually in 37 schools.



ACT with Writing –Time

	Test administration	Make-ups	Test preparation	Staff hours to implement	Library/ media center closure
Median reported by schools	6 hours	9 hours	7 hours	7 hours	0 hours
# of schools reporting	27 schools	26 schools	16 schools	21 schools	13 schools



ACT with Writing – Reported Costs

	Printing for testing administration	Printing for professional development	Costs for test preparation
Median reported by schools	\$19.00	\$0.00	\$6,000.00
# of schools reporting	21 schools	16 schools	2 schools



Advanced Placement (AP)

- The AP tests are associated with a course or an advanced skill level.
- Group administered to students in grades 9-12.
- Typically, 2,400+ exams are administered annually in 21 schools.



Advanced Placement (AP) –Time

	Test administration	Make-ups	Test preparation	Staff hours to implement	Library/ media center closure
Median reported by schools	9 hours	0 hours	2.5 hours	0 hours	0 hours
# of schools reporting	18 schools	9 schools	15 schools	7 schools	9 schools



Advanced Placement (AP) – Reported Costs

	Printing for testing administration	Printing for professional development	Costs for test preparation
Median reported by schools	\$0.00	\$0.00	N/A
# of schools reporting	11 schools	6 schools	0 schools



Civics

- As of the 2016-2017 school year, the civics test is required for a student to earn a high school diploma.
- Group administered online to students in grades 9-12 in 7 different languages.
- Typically, administered to 4,000+ students annually in 39 schools.

Civics –Time

	Test administration	Make-ups	Test preparation	Staff hours to implement	Library/ media center closure
Median reported by schools	2 hours	5 hours	1 hour	0 hours	0 hours
# of schools reporting	30 schools	28 schools	20 schools	10 schools	5 schools

Civics – Reported Costs

	Printing for testing administration	Printing for professional development	Costs for test preparation
Median reported by schools	\$0.00	\$0.00	N/A
# of schools reporting	7 schools	3 schools	0 schools



Cognitive Abilities Test (CogAT)

- A screening tool for students in grade 2 for Gifted and Talented Identification.
- Group administered online to students in grade 2.
- Typically, administered to 4,500+ students annually in 111 schools.

CogAT –Time

	Test administration	Make-ups	Test preparation	Staff hours to implement	Library/ media center closure
Median reported by schools	4 hours	2 hours	1 hour	0 hours	0 hours
# of schools reporting	99 schools	96 schools	63 schools	34 schools	19 schools

CogAT – Reported Costs

	Printing for testing administration	Printing for professional development	Costs for test preparation
Median reported by schools	\$0.00	\$0.00	N/A
# of schools reporting	35 schools	34 schools	0 schools



Dynamic Learning Maps

- Alternate state assessment for students with significant disabilities.
- Group administered to students in grades 3-11.
- Typically, administered to 2,800+ students annually in 62 schools.



Dynamic Learning Maps –Time

	Test administration	Make-ups	Test preparation	Staff hours to implement	Library/ media center closure
Median reported by schools	18 hours	11 hours	2 hours	0 hours	2 hours
# of schools reporting	59 schools	39 schools	31 schools	21 schools	31 schools

Dynamic Learning Maps – Reported Costs

	Printing for testing administration	Printing for professional development	Costs for test preparation
Median reported by schools	\$0.00	\$0.00	N/A
# of schools reporting	18 schools	14 schools	0 schools



Grade 8 Writing

- Group administered online to students in grade 8.
- Students required when applying to select criteria schools.
- Typically, administered to 3,800+ students annually in 80 schools.



Grade 8 Writing –Time

	Test administration	Make-ups	Test preparation	Staff hours to implement	Library/ media center closure
Median reported by schools	3 hours	3 hours	4 hours	0 hours	0 hours
# of schools reporting	66 schools	66 schools	52 schools	27 schools	8 schools

Grade 8 Writing – Reported Costs

	Printing for testing administration	Printing for professional development	Costs for test preparation
Median reported by schools	\$0.00	\$0.00	N/A
# of schools reporting	30 schools	23 schools	0 schools



International Baccalaureate (IB)

- Students elect to take an IB test, typically connected to completion of an IB course.
- Group administered to students in grades 11-12.
- Typically, 2,000+ exams are administered annually in 3 schools.

IB –Time

	Test administration	Make-ups	Test preparation	Staff hours to implement	Library/ media center closure
Median reported by schools	0 hours	0 hours	0 hours	0 hours	0 hours
# of schools reporting	5 schools	2 schools	4 schools	3 schools	0 schools

IB – Reported Costs

	Printing for testing administration	Printing for professional development	Costs for test preparation
Median reported by schools	\$0.00	\$0.00	N/A
# of schools reporting	5 schools	3 schools	0 schools

PALS

- Measures reading readiness.
- Administered to students in grades K4-2.
- Typically, administered to 18,000+ students annually in 113 schools.



PALS –Time

	Test administration	Make-ups	Test preparation	Staff hours to implement	Library/ media center closure
Median reported by schools	82.5 hours	20 hours	4 hours	3 hours	0 hours
# of schools reporting	100 schools	88 schools	55 schools	46 schools	9 schools

PALS – Reported Costs

	Printing for testing administration	Printing for professional development	Costs for test preparation
Median reported by schools	\$13.00	\$0.0	N/A
# of schools reporting	74 schools	42 schools	0 schools

PSAT

- Students are invited to participate in the PSAT.
- Group administered via paper/pencil to students in grades 10-11.
- Typically, administered to 1,400+ students annually in 22 schools.

PSAT –Time

	Test administration	Make-ups	Test preparation	Staff hours to implement	Library/ media center closure
Median reported by schools	5 hours	0 hours	4 hours	0 hours	0 hours
# of schools reporting	22 schools	10 schools	16 schools	10 schools	9 schools

PSAT – Reported Costs

	Printing for testing administration	Printing for professional development	Costs for test preparation
Median reported by schools	\$2.50	\$0.00	N/A
# of schools reporting	16 school	11 schools	0 schools



Tier 2 and Tier 3 Progress Monitoring

- Administer to students in interventions in grades K5-12.
- There are approximately 9,500 (reading) and 5,900 (math) students monitored in Tier 2 in all schools.
- There are approximately 727 students monitored in Tier 3 in 119 schools.



Tier 2 Progress Monitoring –Time

Tier 2	Test administration	Make-ups	Test preparation	Staff hours to implement	Library/ media center closure
Median reported by schools	68 hours	18 hours	4 hours	0 hours	0 hours
# of schools reporting	124 schools	87 schools	66 schools	42 schools	5 schools
Tier 3	Test administration	Make-ups	Test preparation	Staff hours to implement	Library/ media center closure
Median reported by schools	19 hours	9 hours	1 hour	0 hours	0 hours
# of schools reporting	116 schools	75 schools	60 schools	42 schools	5 schools



Tier 2 Progress Monitoring – Reported Costs

Tier 2	Printing for testing administration	Printing for professional development	Costs for test preparation
Median reported by schools	\$5.00	\$0.00	N/A
# of schools reporting	60 schools	40 schools	0 schools
Tier 3	Printing for testing administration	Printing for professional development	Costs for test preparation
Median reported by schools	\$15.00	\$0.00	N/A
# of schools reporting	80 schools	44 schools	0 schools



Universal Screening

- Group administered to students in grades K-10 in reading and math.
- Three screening windows per year
- Typically, administered to 52,000 students in 158 schools.



Universal Screening –Time

	Test administration	Make-ups	Test preparation	Staff hours to implement	Library/ media center closure
Median reported by schools	54 hours	40 hours	6 hours	0 hours	5.5 hours
# of schools reporting	132 schools	127 schools	95 schools	48 schools	57 schools



Universal Screening – Reported Costs

	Printing for testing administration	Printing for professional development	Costs for test preparation
Median reported by schools	\$7.00	\$3.00	N/A
# of schools reporting	60 schools	59 schools	0 schools



WIDA Screening

- Part of the English Learner (EL) identification process.
- WIDA Screening tools are administered via computer grades 1-12. The K5 is on paper.
- Typically, administered to 3,000+ students annually.



WIDA Online Screener –Time

	Test administration	Make-ups	Test preparation	Staff hours to implement	Library/ media center closure
Median reported by schools	15 hours	12 hours	0 hours	0 hours	0 hours
# of schools reporting	33 schools	21 schools	13 schools	11 schools	1 school

WIDA Online Screener – Reported Costs

	Printing for testing administration	Printing for professional development	Costs for test preparation
Median reported by schools	\$0.00	\$0.00	N/A
# of schools reporting	10 schools	10 schools	0 schools



Wisconsin Forward Exam

- Group administered online to grades 3-8 and 10.
- Some small group administration for students with disabilities and English learners.
- Typically, administered to 34,000+ students annually in 155 schools.



Wisconsin Forward Exam –Time

	Test administration	Make-ups	Test preparation	Staff hours to implement	Library/ media center closure
Median reported by schools	44 hours	31 hours	16 hours	4.5 hours	20 hours
# of schools reporting	132 schools	127 schools	114 schools	68 schools	74 schools

Wisconsin Forward Exam – Reported Costs

	Printing for testing administration	Printing for professional development	Costs for test preparation
Median reported by schools	\$20.00	\$14.00	\$80.00
# of schools reporting	96 schools	92 schools	1 school



Thank you.



Dr. Keith P. Posley, *Superintendent*