

High School Regional Showcase



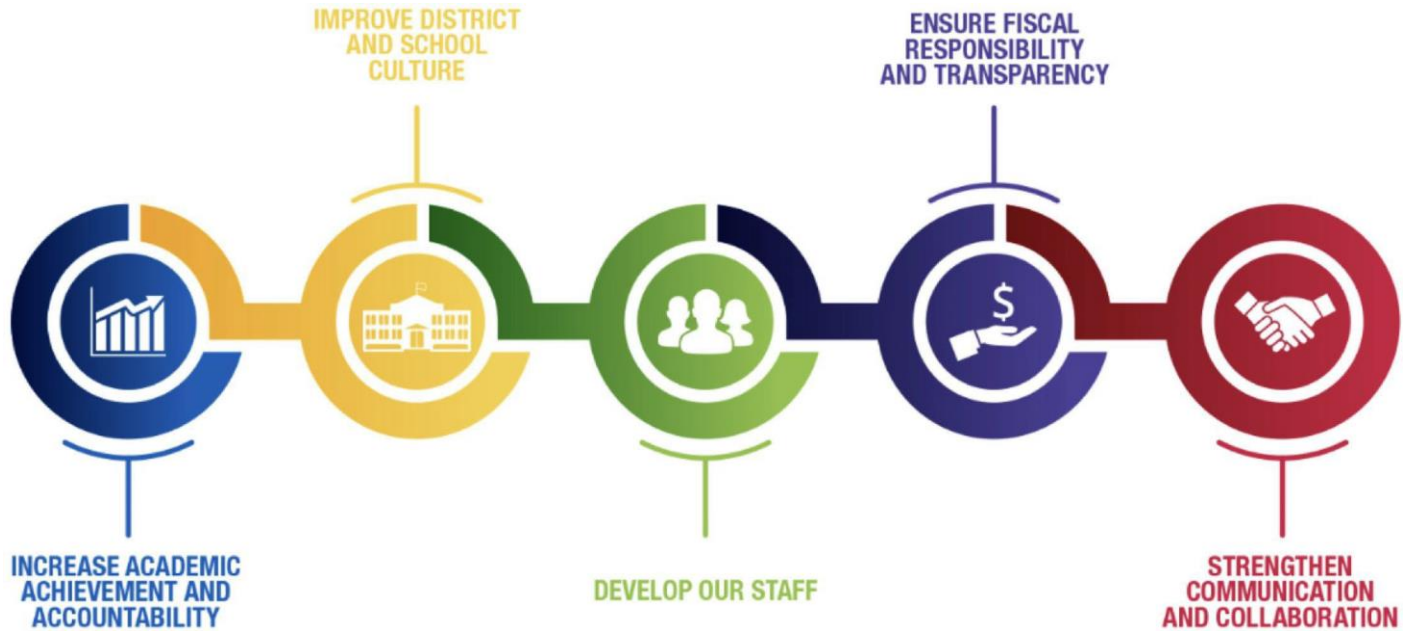
January 12, 2023

**MILWAUKEE
PUBLIC SCHOOLS**

Presenters: Jennifer Smith, Ed.D., Regional Superintendent, Office of School Administration
Mike Roemer, Principal, Ronald Reagan High School

**Dr. Keith P. Posley,
Superintendent**

Five Priorities for Success



School Data - Ronald Reagan High School

Enrollment:1328

Attendance YTD: 92.8%

Suspension Rate: 2.1%

International Baccalaureate

- Middle Years Programme
- Diploma Programme
- Career Programme



Points of Pride 2022



Exceeds Expectations



PRIORITY AREA WEIGHTS

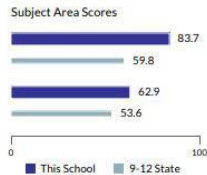


Priority Area Scores

ACHIEVEMENT



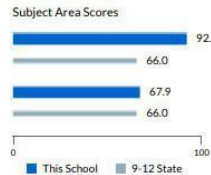
English Language Arts
Mathematics



GROWTH



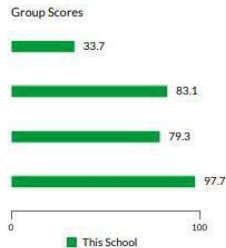
English Language Arts
Mathematics



TARGET GROUP OUTCOMES



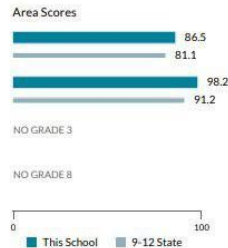
Achievement
Growth
Chronic Absenteeism
Graduation



ON-TRACK TO GRADUATION



Chronic Absenteeism
Graduation
3rd Grade English Language Arts
8th Grade Mathematics



One Mission, One Vision, One Focus - IB

2022 IB Participation and Results

- 78.7% pass rate for Full Diploma (37/47)
- 89.8% pass rate for CP (53/59)
- Overwhelming majority of Anticipated DP students earned 4 or higher
- Overwhelming majority of Anticipated CP earned 3 or higher
- Several 7s on subject report: Visual Arts HL, Computer Science SL, Politics SL, Spanish HL, Spanish SL

Year	Total Number of Candidates Registered	Number of Full Diploma Candidates	Number of Diplomas Earned	Full Diploma Passing Rate	Number of CP Candidates	Number of CP Certificates Earned	CP Certificates Passing Rate	Number of Course/Certificate Candidates
2022	248	47	37	78.70%	59	53	89.80%	85
2021	229	69	54	78.30%	50	45	90.00%	64
2020	244	45	33	73.30%	70	65	92.80%	67

Equitable Multi-Level System of Supports



Gold

Behavior



Gold

Reading



Gold

Math



College and Career Readiness, Social-Emotional support, Content Proficiency (math and English Language Arts) and Credit Attainment/Recovery provided through the following:

- Freshman Academy
- Block 6 Math / S.A.W / CPW / Saturday IB Academy
- Personalized Blended Learning Lab
- Credit Recovery Lab
- Theory of Knowledge (TOK) & Personal Professional Skills (PPS)
- Extended Learning Opportunities (ELO)

College & Career Readiness



Distinguished Standard
Award for Health Academy
(2020-2022)

Launching a NAF Education
Academy-our pipeline for
future teachers!

Opportunities for growth-High School Region

Attendance Rate for 22-23 is up 1.5%

Suspension Rate for 22-23 is down 4.5%

Focus areas for high schools:

- alternatives to suspension
- increasing engagement of students
- high quality, Tier 1 instruction



Thank you.



Dr. Keith P. Posley, *Superintendent*