



**MILWAUKEE
PUBLIC SCHOOLS**

MPS/MKE Early Childhood 1,825 Initiative Update

January 11, 2024

Dr. Keith P. Posley
Superintendent



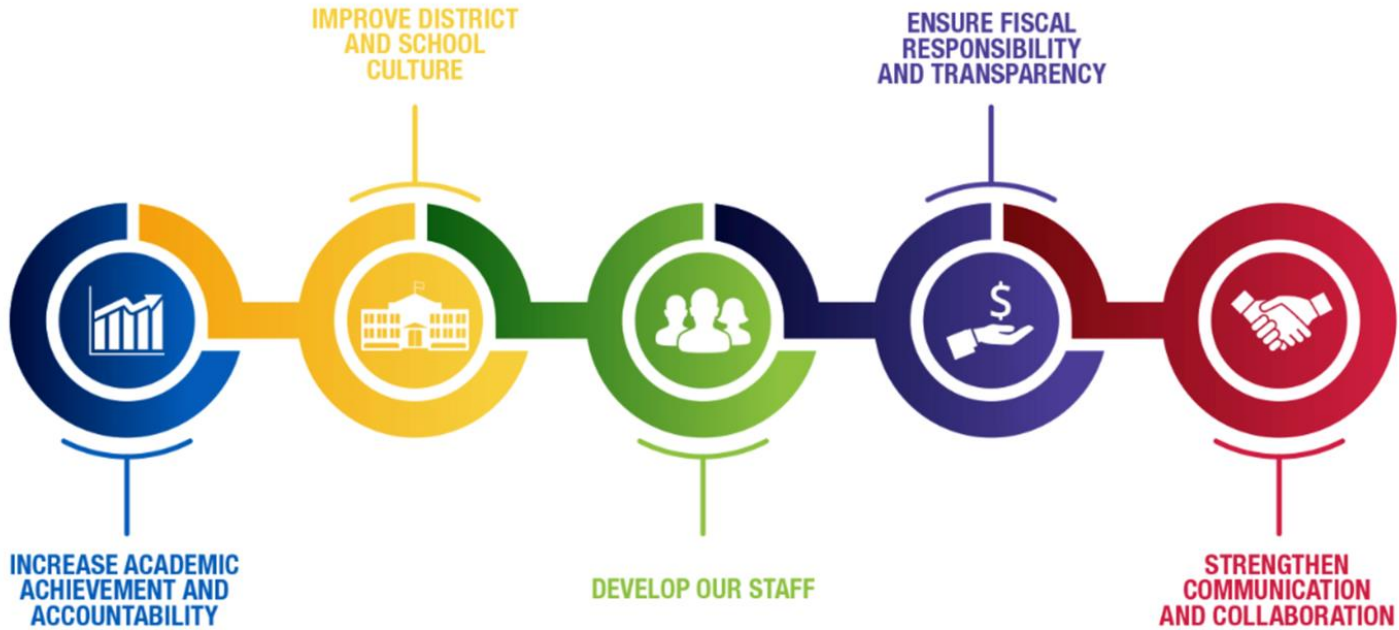
MILWAUKEE
PUBLIC SCHOOLS

MPS/MKE Early Childhood 1,825 Initiative Update

Presenters

Krissy Washington,
Early Learning Manager,
Department of Curriculum
and Instruction

Five Priorities for Success



Ambitious Instruction



Strategic Plan Driving Our Mission



Strategic Plan Driving Our Mission:

MPS is a diverse district that welcomes all students and prepares them for success in higher education, post-education opportunities, work, and citizenship.

Explicit Instruction & Formative Practices

Students will complete rigorous coursework

- Thoughtful work in Tier 1
- High Level Questioning
- Academic Discussions

Engagement

Students will feel emotionally and physically safe at school

- Supportive Environments
- Respect Differences
- Classroom Management

Formative Practices and Explicit Instruction

Students will experience inclusive classrooms

- Supportive Entry Points for Learning
- Support for Diverse Academics, Social, and Emotional, Needs of Students

Early Childhood Initiative Focus and Goals

Early Childhood Staff Development	Equitable Resources	Family Support and Transition	Instruction	Social Emotional and Cultural and Linguistic Needs
<p>Provide high-quality professional learning opportunities for all early childhood care providers and educators</p>	<p>Ensure that early childhood programs are equitably equipped with resources needed to meet the needs of the children and families they serve</p>	<p>Ensure that early childhood programs are equitably equipped with resources needed to meet the needs of the children and families they serve</p>	<p>Ensure that high quality, research-based instruction is provided for all early childhood children and students</p>	<p>Provide support for students to address SEL needs as well as take into consideration the cultural and linguistic needs of students</p>



Early Childhood Initiative Work

Completed Work	Current Work
<p><u>Early Childhood Staff Development</u> Served on the planning committee and attended the Pathways to Quality Conference</p>	<p><u>Early Childhood Staff Development</u> Planning for the Promoting Early Childhood Conference</p>
<p><u>Equitable Resources</u> Continued partnership work on the Bridges to School MKE project</p>	<p><u>Equitable Resources</u> Continuing to update the MPS Portal with resources and sharing with internal and external community</p>
<p><u>Family Support and Transition</u> Updated MPS Portal to include early childhood resources</p>	<p><u>Family Support and Transition</u> Planning for a wellness and resource opportunity</p>
<p><u>Instruction</u> Provided Conscious Discipline training series for district</p>	<p><u>Instruction</u> Participating in ongoing Conscious Discipline</p>
<p><u>Social and Emotional Learning & Cultural and Linguistic Needs</u> Offered a session on teaching multilingual learners</p>	<p><u>Social and Emotional Learning & Cultural and Linguistic Needs</u> Planning on social emotional learning opportunities</p>

Future Work

- Continue to plan for professional development sessions that support MPS/MKE Early Childhood 1,825 Initiative
- Participate in the Kindergarten Enrollment Fair on Saturday, February 3, 2024



- Plan for workshop opportunities that support health and wellness
- Attend learning opportunities that focus on early childhood education





**MILWAUKEE
PUBLIC SCHOOLS**

**Thank
You!**