

# Bilingual Multicultural Education

November 2022



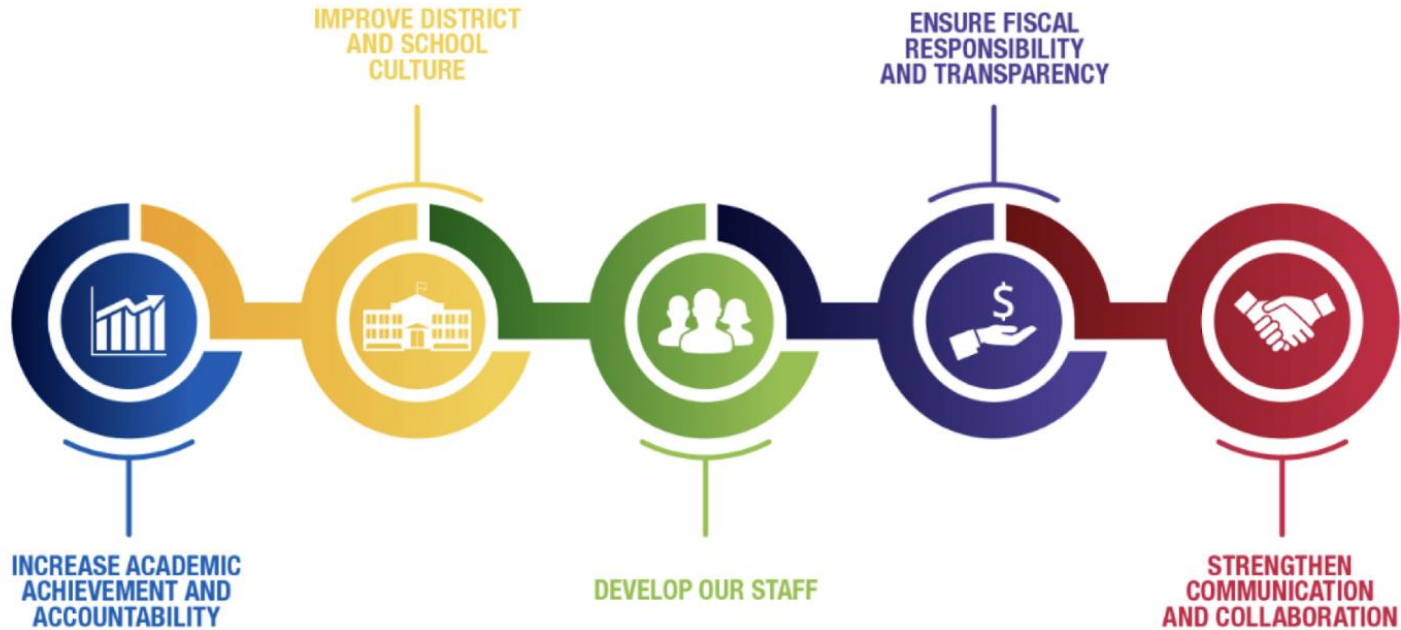
**MILWAUKEE**  
PUBLIC SCHOOLS

***Presenters:***

Eduardo Galvan, Regional Superintendent  
Lorena Gueny, Director, Bilingual Multicultural Education

Dr. Keith P. Posley, *Superintendent*

# 5 Priorities for Success

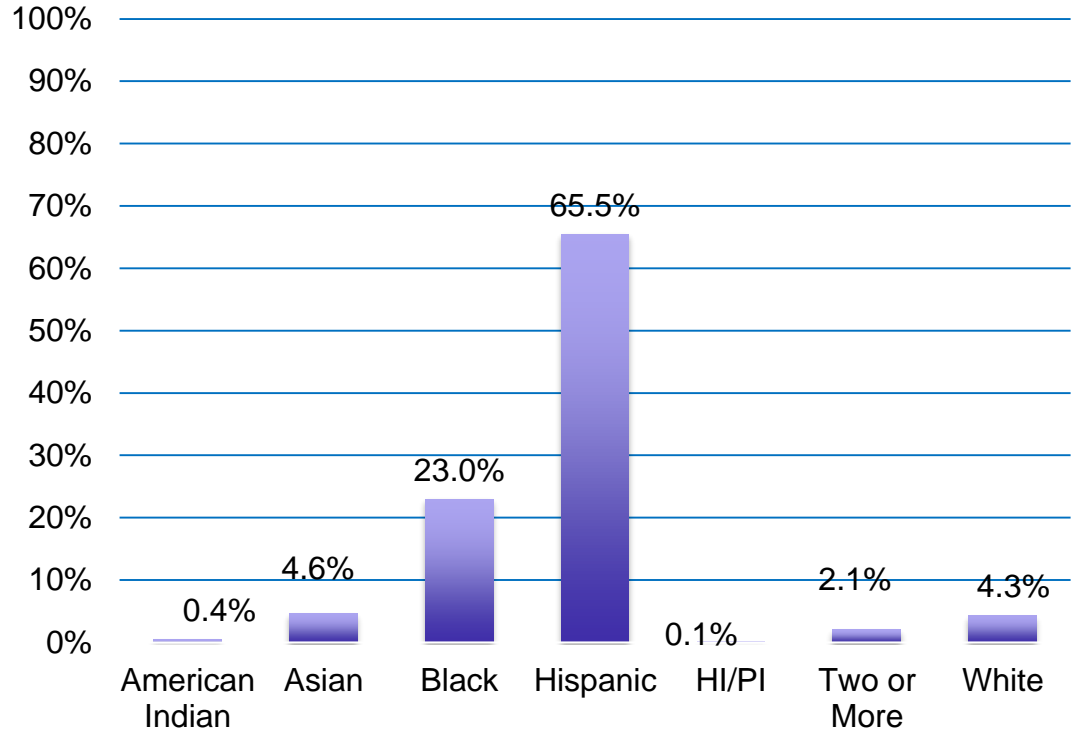


# Bilingual Schools Demographics

## 2022-23

- 13,305 Students
- 21 Schools
- 38.3% English Language Learners
- 22.8% Special Education
- 81.0% Economically Disadvantaged\*

\*Schools continue to collect and review alternate income surveys.



# Bilingual Multicultural Education Department

---

- **Mission:** The mission of the Department of Bilingual Multicultural Education is to provide equitable access to quality multilingual and multicultural programming in Milwaukee Public Schools.
- **Vision:** MPS students graduate with strong cultural and linguistic identities, leveraging these assets to navigate college, career, and life as global citizens in an inclusive society.

# Department of Bilingual Multicultural Education Updates

---

- Bilingual programming
- Seal of Biliteracy
- Professional Development to schools
- Parent engagement and marketing
- District Multicultural Multilingual Advisory Council (DMMAC)



# Program Updates - Bilingual

Program	Accomplishments	Next Steps
Bilingual	<p>Guided teacher work groups (K5-5th grades) in the development of Week-at-a-Glance documents for Trimester 1 Science BUFs (Biliteracy Unit Framework) - for the Biliteracy Year-at-a-Glance</p> <p>Completed the Bilingual Dual Language Foundational Skills Scope and Sequence (K5-2nd grades)</p> <p>Collaboratively developed and modeled instructional plans for primary teachers at Riley Dual Language (DL) Montessori</p>	<p>Complete an inventory of reading skills and standards based on the newly adopted reading materials in order to inform updates to biliteracy units and the Biliteracy Year-at-a-Glance</p> <p>Provide professional development on Bilingual Dual Language Foundational Skills Scope and Sequence (K5-2nd grades)</p> <p>Continue to support Riley DL Montessori through the intentional development of tier one curricular materials, supports, and strategies that promote language development</p>



# Program Updates – ESL and ELD

Program	Accomplishments	Next Steps
English as a Second Language (ESL)  English Language Development (ELD)	Implement the of ELD action plan, 2021-2024  Offered professional development and coaching to schools that educate English Learners (EL)  Provided summer services to newcomer refugees	Implementation will continue district wide  <ul style="list-style-type: none"><li>• English learner identification</li><li>• Instructional strategies</li><li>• Reclassification to former EL</li></ul> Determine/document eligibility and develop a plan of services for summer 2023



# Program Updates – World Language and Immersion

Program	Accomplishments	Next Steps
<p>World Languages and Immersion</p>	<p><b>Path to Proficiency</b> in World Languages and Immersion second language acquisition</p> <p><b>Explicit instruction</b> based on the World Languages Curriculum Map and learner centered Can-Do Statements</p> <p><b>Formative practices</b> through the Intercultural Communicative Competence and authentic resources. (Products/Practices/Perspective)</p> <p><b>Engagement</b> through at least 90% authentic communication using the target language.</p>	<div data-bbox="1058 238 1460 749"> <p><b>Path to Proficiency</b></p> <p>Language proficiency refers to a person's ability to use a language for a variety of purposes, including speaking, listening, reading, and writing. Proficiency is commonly measured using guidelines developed by the American Council on the Teaching of Foreign Languages (ACTFL).</p> </div> <div data-bbox="1489 238 1906 516"> <p><b>MANGO</b> Language-learning centered around you.</p> </div> <div data-bbox="1489 536 1906 716"> <p><b>LinguaFolio</b> Online</p> </div> <div data-bbox="1045 805 1476 947"> <p><b>PROXIMITY</b> LEARNING</p> </div> <div data-bbox="1489 800 1906 951"> <p><b>Speakable</b></p> </div>



# Program Updates – Seal of Biliteracy

Program	Accomplishments	Next Steps
Seal of Biliteracy (SBL)	<p><b>2019–20</b></p> <ul style="list-style-type: none"><li>• 18 graduates</li></ul> <p><b>2020–21</b></p> <ul style="list-style-type: none"><li>• 58 graduates</li></ul> <p><b>2021–22</b></p> <ul style="list-style-type: none"><li>• 66 graduates</li></ul>	Continue to motivate high schools to participate in the Seal of Biliteracy recognition to reach a goal of graduating 100 students with this honor



# DMMAC Update

---

## 2022-2023 Kick Off Meeting

- Introduced parents to the MPS language portfolio (ESL, Bilingual, World Language and Immersion programming).
- Beyond DMMAC Workshops- Individual schools hosting language specific meetings to help families understand the language program available at their school.
- Brief exploration of benefits/perks of enrolling/completing language programming.

## Mango Workshop

- Self - paced language platform that allows MPS employees, families and students to learn/strengthen a language on their own time.

## DMMAC Coming Up:

- 11/15 Parent Coordinator Presentation
- 11/16 Meeting topic: The benefits and perks of benefits/perks of enrolling/completing language programming.
  - Free college enrollment in Germany
  - College credits
  - Seal of Biliteracy



# Thank you.



Dr. Keith P. Posley, *Superintendent*

© 2021 Milwaukee Public Schools • 11