

# District Updates Multi-Tiered System of Supports and Interventions

February 7, 2023



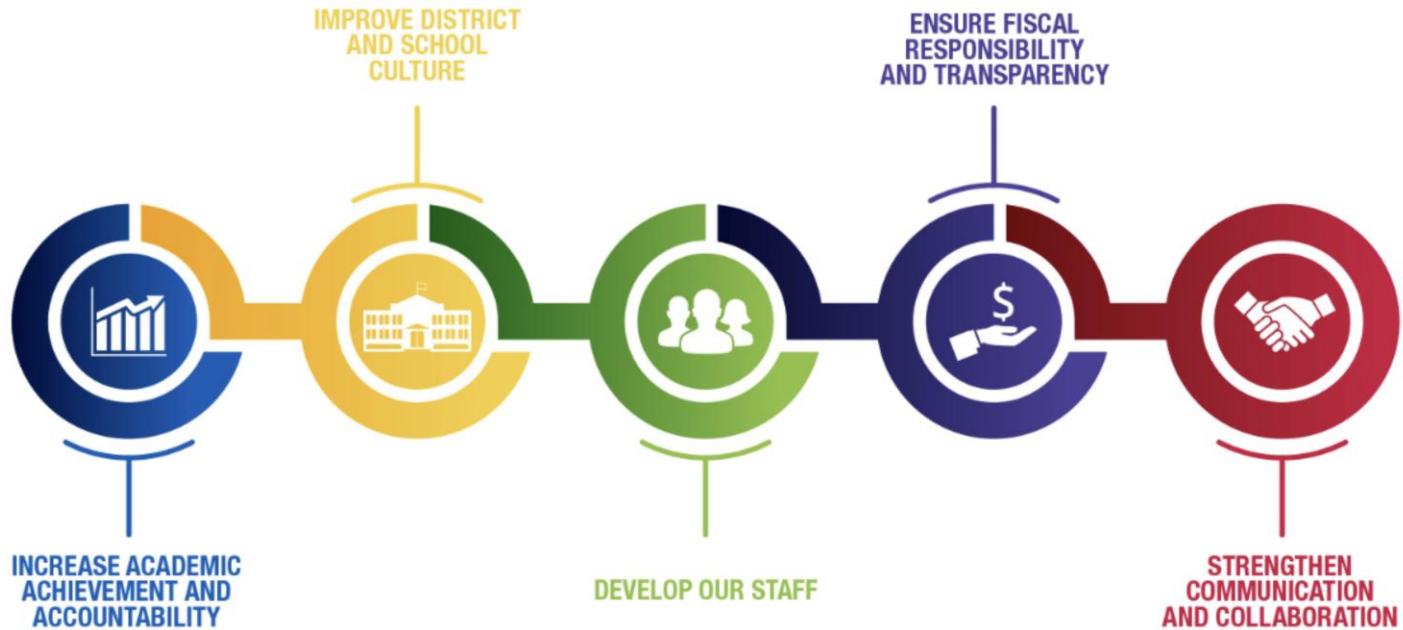
MILWAUKEE  
PUBLIC SCHOOLS

**Presenters:**

Matthew Boswell, Senior Director, Student Services  
Jon Jagemann, Discipline Manager, Student Services

Dr. Keith P. Posley, *Superintendent*

# Five Priorities for Success



# Proactive Supports & Interventions

---

- Provided Culture, Climate and Alternatives to Suspension Toolkit best practices- bullying awareness
- School-based PBIS Tier 1 Team and Building Intervention Team (BIT) monthly meeting
- Sessions of Courageous Conversations about Race (CCAR) Exploration held for district staff members
- Cohort of additional CCAR Practitioners

# Proactive Supports & Interventions

## Tier 2 and Tier 3 Interventions

	Students
Check-In/Check-Out (CICO)	1699
Individualized CICO	376
Social Academic Instructional Group	1112
Behavior Assessment/Intervention Plan (BAIP)	102
FBA/BIP	172
Educational Wraparound and RENEW	113
Total Interventions	3574



# Proactive Supports & Interventions

## Administrator Alternatives to Suspension January 2023

Conference	Counsel	Detention	Mediation
155	1294	85	100
Referral to BIT	Support Staff	Repairing Harm Circle	Restorative Conversation
23	47	5	54

School leaders provided additional information on proper documentation and investigation of bullying

# Student, Staff, & Community Collaboration

---

- Mid-year analysis of Student Discipline Committees
- Common themes of increased activities, academic check-ins, consistent policy implementation, understanding of mental health, and classroom climate.
- Quarterly Community Conversation regarding attendance and the Culture, Climate & Alternatives to Suspension Toolkit



# Next Steps

---

- Provide PD on Culture, Climate & Alternatives to Suspension Toolkit focus- bias and antiracism
- Facilitate CCAR Exploration seminars
- 28-day racial equity challenge



# Positive Behavior Interventions & Supports (PBIS)

---

## Vision

- The vision of PBIS in Milwaukee Public Schools is for students to feel validated, affirmed and empowered to succeed.

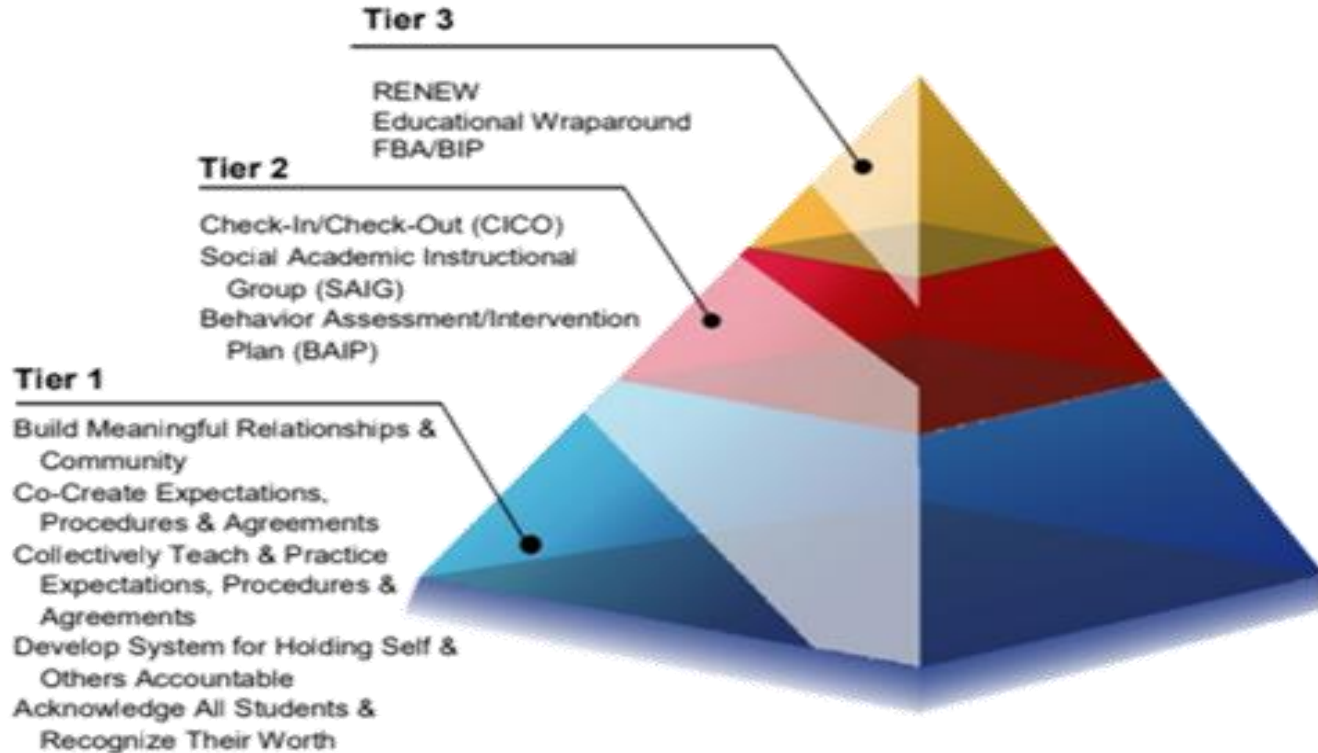
## Mission Statement

- The mission of PBIS in MPS is to use a proactive, data-informed, systemic approach to school-wide behavior within an equitable multi-tiered system of supports framework.





# Positive Behavior Interventions & Supports (PBIS)



# Positive Behavior Interventions & Supports (PBIS)

## Coaching

- PBIS Tier 1 Teams
- Building Intervention Teams (BIT)
- Schoolwide strategies, systems, expectations, and procedures
- Classroom tier 1 universal supports
- Best practices

## School Improvement

- Continuous improvement process
- Culture and climate strategies
- Monthly minutes
- Tiered Fidelity Inventory (TFI)

## Professional Development

- Facilitate schoolwide and district professional development
- Sessions available through LMS

## Data

- Monthly snapshot to determine needs
- Behavior interventions
- Progress monitoring

# Lancaster School

---



- Principal Valencia Tank
- K-8<sup>th</sup> Grade, 332 students
- Vision: The Lancaster Community is a school where all participants are engaged in moving students forward to high school and beyond. All staff will analyze data frequently to adjust instruction to meet ALL students' needs. Lancaster will engage, inspire, and challenge our school community to prepare students to be innovative citizens in a complex, interconnected, changing world.

# Lancaster School

---

- Positive relationships as the anchor of everything
- “KNIGHT WAY IS THE RIGHT WAY!”
- Greeting Scholars upon arrival and at each class period
- Intentional morning meetings
- Mending relationships after trust has been broken or poor behavior has been displayed
- Including parents into the Lancaster community
- Behavior Check In Check Out (CICO)
- Opportunity to check-in with multiple teachers



# Lancaster School

---

- Positive reinforcement to change behavior
- There's a positive in every day
- Monthly assemblies
- Bi-weekly PBIS acknowledgement
- Positive phone calls home and positive attendance calls
- Visual attendance information throughout the building
- Celebrations and contests

# Thank you.



Dr. Keith P. Posley, *Superintendent*

©2023 Milwaukee Public Schools • 14