



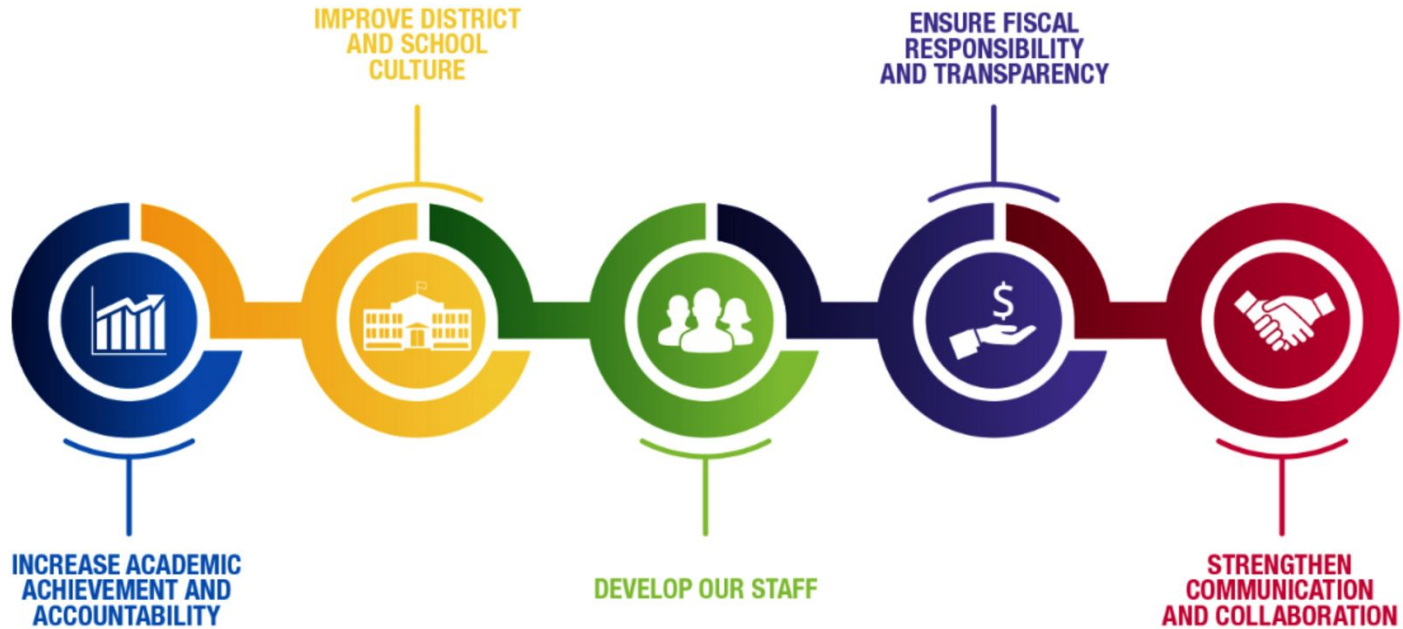
MILWAUKEE
PUBLIC SCHOOLS

**Report on
Ambitious Instruction
September 2023**

Dr. Felicia Saffold, Sr Director Curriculum and Instruction

Dr. Keith P. Posley
Superintendent

Five Priorities for Success





MILWAUKEE
PUBLIC SCHOOLS



Formative
Practices



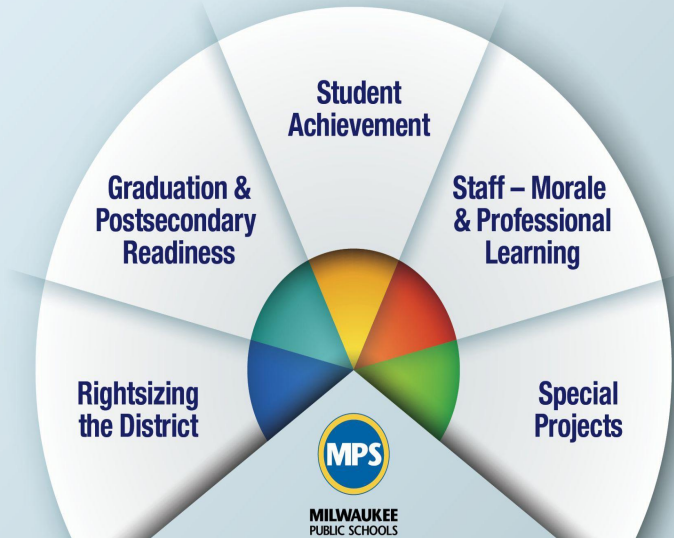
Explicit
Instruction



Engagement



Ambitious Instruction and Strategic Plan Connections



Strategic Plan Driving Our Mission:

MPS is a diverse district that welcomes all students and prepares them for success in higher education, post-education opportunities, work, and citizenship.

Explicit Instruction & Formative Practices

Students will complete rigorous coursework

- Thoughtful work in Tier 1
- High Level Questioning
- Academic Discussions

Engagement

Students will feel emotionally and physically safe at school

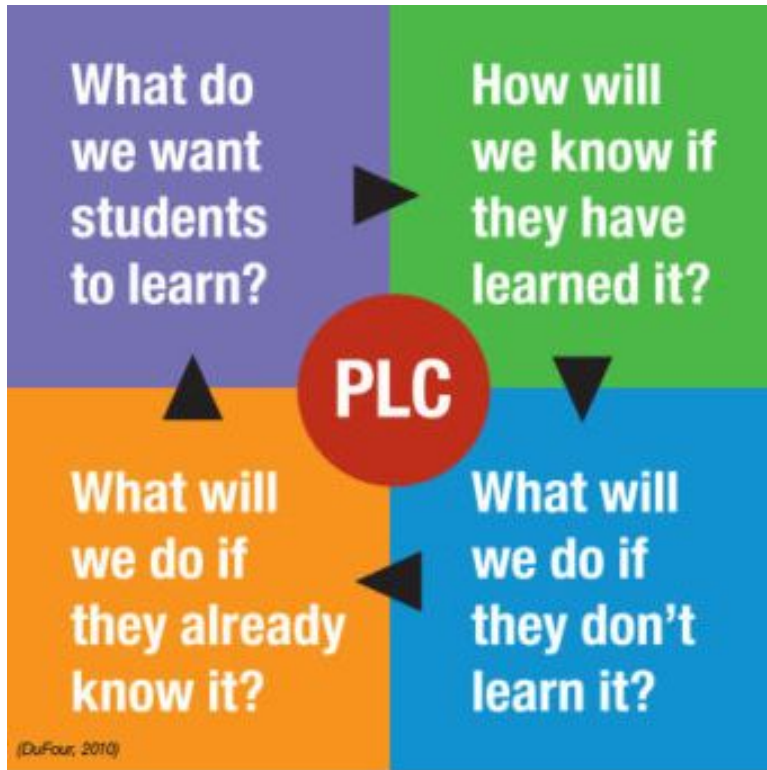
- Supportive Environments
- Respect Differences
- Classroom Management

Formative Practices and Explicit Instruction

Students will experience inclusive classrooms

- Supportive Entry Points for Learning
- Support for Diverse Academics, Social, and Emotional, Needs of Students

Building a Culture of Collaboration



Four Critical Questions to Enhance Teaching and Learning

We will center our work around four questions. We will use the four questions to plan instruction, assess student progress, and respond instructionally. This collaboration will include both students and teacher.



In 2023-2024, You Will See...

Explicit Instruction Teachers

- Planning and implementing rigorous lessons using district-adopted/endorsed resources to address grade-level standards
- Planning and implementing engaging lessons that include collaborative experiences

Students

- Working collaboratively in pairs or groups
- Engaging in active listening, asking questions, using discussion stems to participate in dialogue

Formative Practices Teachers

- Checking students' understanding before, during, and after learning experiences and responding to student data and adjusting instruction
- Meeting in PLC groups to analyze student work and create next steps

Students

- Engaged in higher level questioning while participating in rigorous tasks
- Using multiple representations to demonstrate understanding

Engagement Teachers and Students

- Student choice with connections to students' interests
- Scaffolded learning experiences that allow for all students to demonstrate proficiency
- Safe learning environments in which students are comfortable taking risks
- Empowering students to share/explain their thinking and ideas with strategies/supports for language development
- High level, rigorous, questions to build connections between self and content and the content areas

In 2023-2024, You Will See...

Explicit Instruction Leaders

- Observing classrooms and providing feedback
- Providing common planning time for staff collaboration and reviewing their outcomes
- Ensuring district adopted materials and curriculum guides are used and paced as written

Formative Practices Leaders

- Observing classrooms and providing feedback
- Creating and leading PLCs to look at student work, monitor learning, and adjust instruction
- Coaching and modeling practices that are culturally and linguistically responsive

Engagement Leaders

- Observing classrooms and providing feedback
- Empowering and encouraging students
- Actively implement district initiatives such as PBIS
- Ensuring district professional learning is provided to staff in Second Step, Restorative Practices, etc.

Measurable Outcomes



Objective. Key Results. Initiatives.

- **Objective:** tells us the goal for student achievement
- **Key Results:** tell us if we are headed in the right direction
- **Initiatives:** tell us what we will do to keep moving in the right direction

