

# Regional Showcase - Central Region

December 9, 2021



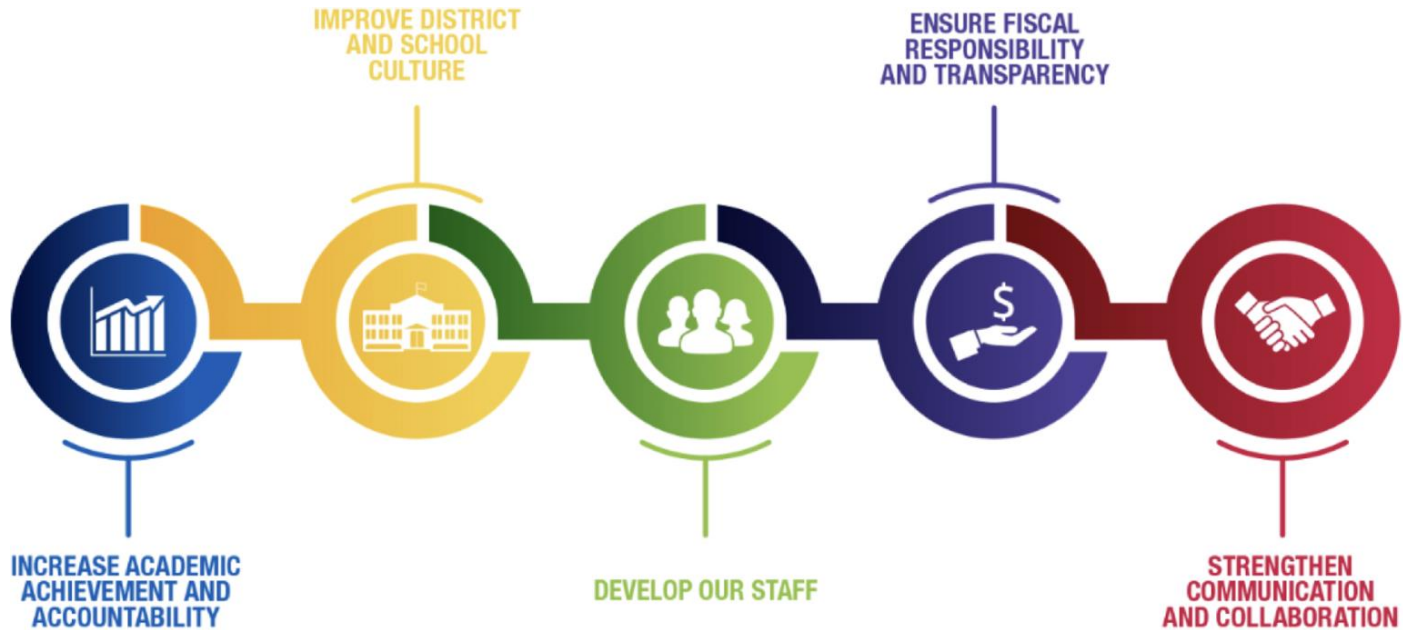
**MILWAUKEE**  
PUBLIC SCHOOLS

*Presenters:*

Dr. Carletta Noland, Regional Superintendent, Office of School Administration  
Ms. Renee Drane, Principal, Westside Academy School

Dr. Keith P. Posley, *Superintendent*

# Five Priorities for Success

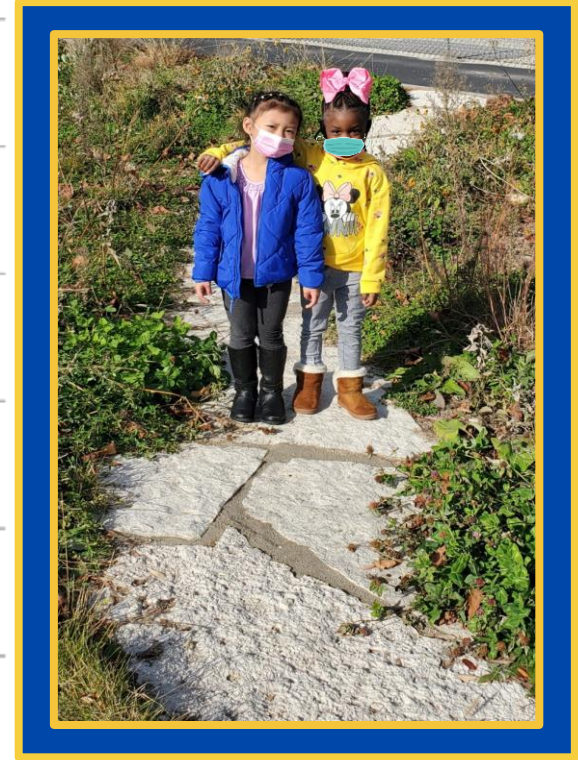
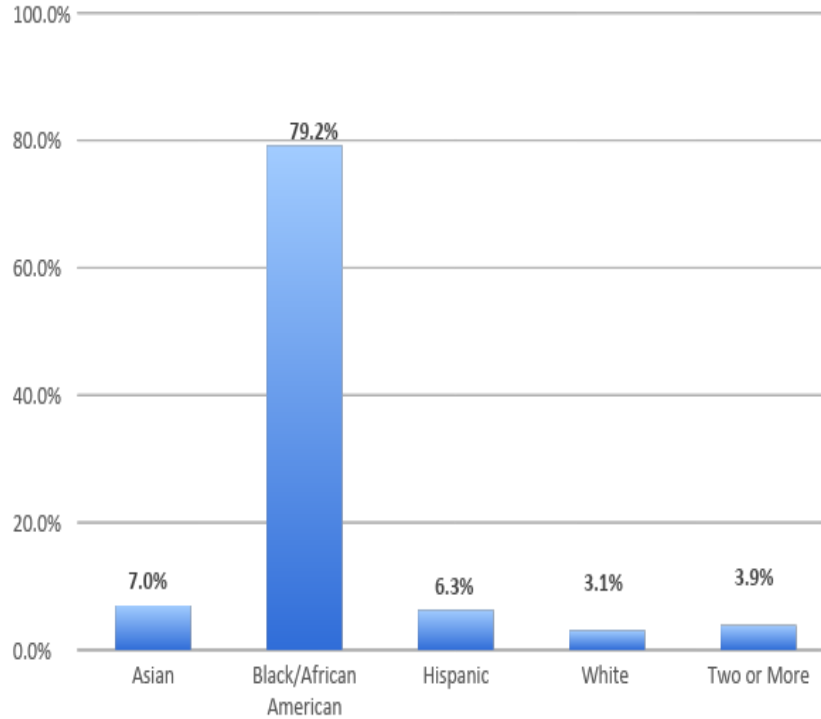


# Central Region Schools

K-5 Neighborhood	K-8 Neighborhood	Academic Specialty	Community Schools
<ul style="list-style-type: none"> <li>Samuel Clemens</li> <li>Gwen T. Jackson</li> <li>Neeskara Elementary</li> <li>Keefe Avenue</li> </ul>	<ul style="list-style-type: none"> <li>Mary McLeod Bethune</li> <li>Luther Burbank</li> <li>Clarke Street</li> <li>Fifty-Third Street</li> <li>Benjamin Franklin</li> <li>Hi-Mount School</li> <li>Story Elementary</li> <li>Robert M. LaFollette</li> <li>Ralph H. Metcalfe</li> <li>Frances Starms Discovery Learning Center</li> </ul>	<ul style="list-style-type: none"> <li>Lloyd Barbee (K-6 Montessori)</li> <li>Hawley (K-5 Environmental)</li> <li>Grant Gordon (Early Childhood)</li> <li>Frances Starms ECC (Early Childhood)</li> <li>Milwaukee French Immersion (K-5)</li> <li>Sherman Multicultural Arts (Turnaround Arts K-8)</li> <li>Marvin Pratt (Primary Years IB Candidate School K-5)</li> </ul>	<ul style="list-style-type: none"> <li>Auer Avenue (K-5)</li> <li>Hopkins-Lloyd (K-5)</li> <li>Westside Academy (K-5)</li> </ul>

# Central Region

- 7,089 Students
- 24 Schools
- 6.6 % English Language Learners
- 19.4 % Students with Disabilities
- 89.3% Economically Disadvantaged



# 2020-21 State Report Card

Pratt Elementary	89.3	Significantly Exceeds Expectations
Starms Discovery	66.6	Meets Expectations
Milwaukee French Immersion	65.9	Meets Expectations
Clemens Elementary	64.8	Meets Expectations
LaFollette Elementary	63.3	Meets Expectations
Neeskara Elementary	62.8	Meets Expectations
Franklin Elementary	62.7	Meets Expectations
Bethune Academy	62.5	Meets Expectations
Fifty-Third Street Elementary	62.3	Meets Expectations
Clarke Street Elementary	61.2	Meets Expectations
Metcalfe Elementary	61.2	Meets Expectations
Story Elementary	58.4	Meets Expectations
Westside Academy	58.2	Meets Expectations
Hi-Mount Community School	56.9	Meets Few Expectations
Burbank Elementary	54.8	Meets Few Expectations
Auer Avenue Elementary	53.8	Meets Few Expectations
Hawley Environmental School	53.3	Meets Few Expectations
Barbee Elementary	52.4	Meets Few Expectations
Keefe Avenue Elementary	52.3	Meets Few Expectations
Sherman Elementary	47.1	Fails to Meet Expectations
Jackson Elementary	26.0	Fails to Meet Expectations
Hopkins Lloyd Community School	21.2	Fails to Meet Expectations





# Vision Statement

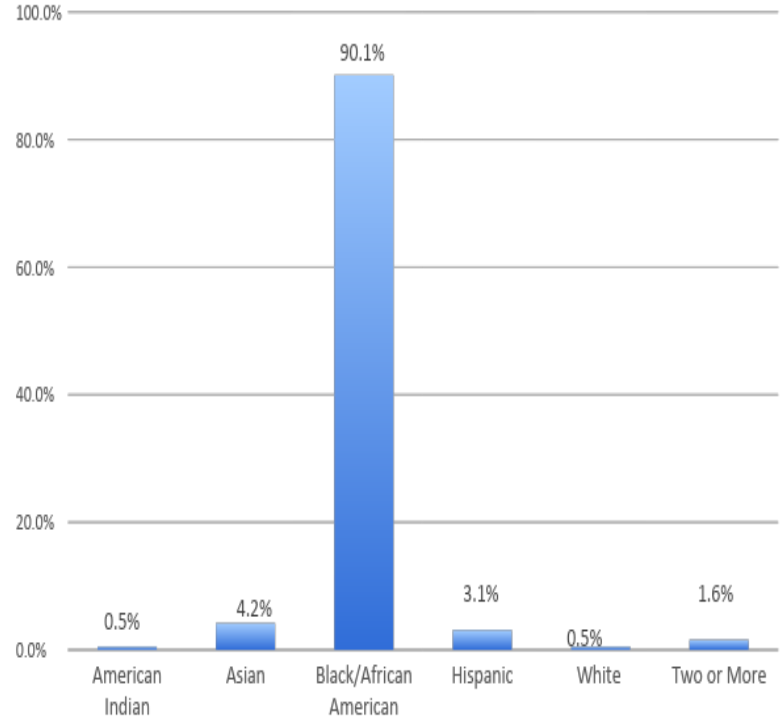
Westside Academy is a school with high expectations focusing on **core academics** and the **social-emotional** development of our students to prepare them to be **college and career ready**. Our comprehensive program encourages students to be critical thinkers across the content. Students solve complex problems using higher-order thinking skills. We are a uniform school, embracing **Positive Behavioral Interventions and Supports (PBIS)** to reinforce positive behaviors.



# Westside Demographics



- **191 Students**
- **0.5% English Learners**
- **21.7% Students with disabilities**
- **91.0% economically disadvantaged**





# Committed Staff

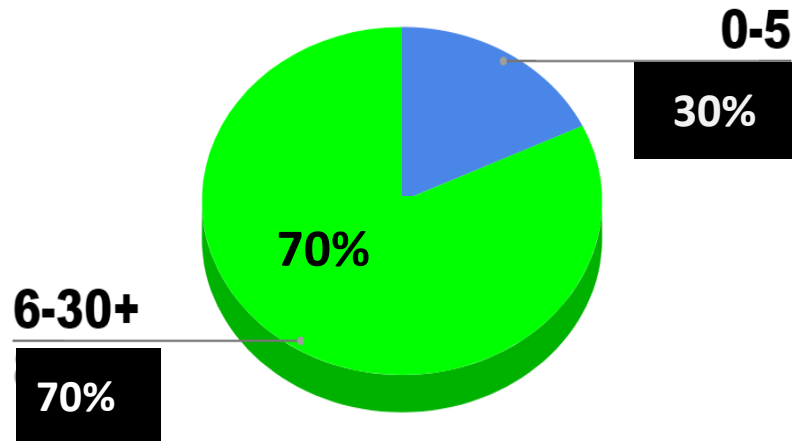
**Staff Attendance** 95.7% staff attendance Rate

**Teaching Experience** 80% of our Teaching staff have at least 1 Master's Degree

**Teacher Retention** 70% of our staff have been at Westside at least 5 years.

**Staff Volunteers** 80% of our staff volunteer for monthly Family Events.

## Years of Teaching Experience



# Engaging Families with Community



Froedtert &



WISCONSIN  
BIKE FED



# Safe and Supportive Culture

- **Safety as a Priority**
- **Bike Federation/City of Milwaukee**
- **PBIS (Positive Behavior Intervention Supports)**
- **SEL (Social Emotional Support)**
- **Sports Program**
- **Awards and Recognition**
- **Community School Leadership Team**
- **CLC (Community Learning Center)**
- **Restorative Practices**



# Green School

Discovery Cart

Academic  
Performance

Community  
Engagement



# Next Steps

- Professional Development research-based strategies in **Literacy to all teaching staff.**
- Professional Development to build capacity of all staff in **Restorative Practices.**
- Parents supporting Parents initiative.



# Thank you.



Dr. Keith P. Posley, *Superintendent*

© 2021 Milwaukee Public Schools • 17

