



MILWAUKEE
PUBLIC SCHOOLS

Enhancing Educational Communities and School Climate

January 9, 2024

Dr. Keith P. Posley
Superintendent



MILWAUKEE
PUBLIC SCHOOLS

Enhancing Educational Communities and School Climate

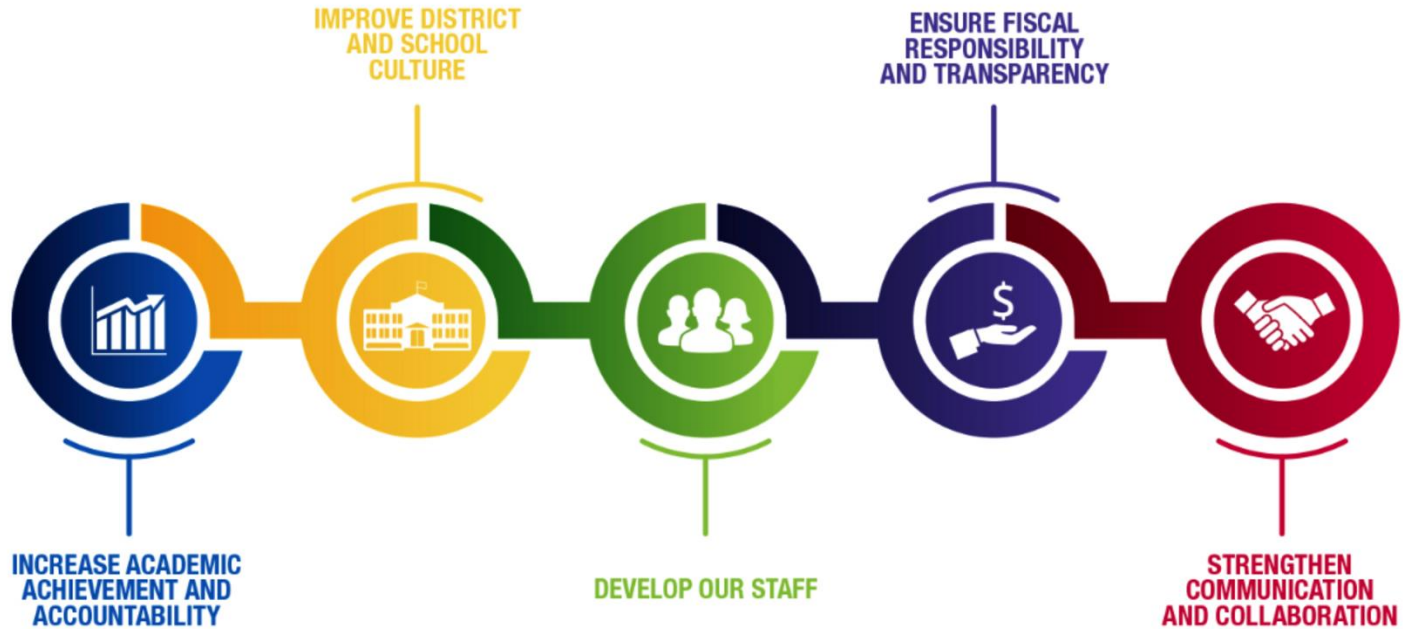
Presenters

Jon Jagemann
District Discipline Manager

Jason Brazil
Principal

Barack Obama School of
Career and Tech Ed.

Five Priorities for Success



2023-2024 School Year

- Four pathways utilized: PBIS tiered interventions, mental wellness, antiracism & antibias, and restorative practices
- School teams of PBIS Tier 1, building intervention team (BIT), and student discipline committee
- Focus on proactive approaches, systems, and strategies

PBIS Tiered Interventions

- Team meetings at all MPS schools
- Professional development including strategies to increase engagement and connect with families
- Overview for Milwaukee Recreation of PBIS as a tiered system of support
- PBIS walk through rubric and alignment with school improvement plan

Mental Wellness

- Offering Classroom Organization and Management Program (COMP) to teachers
- Increasing fidelity of Second Step and supporting implementation of comprehensive mental wellness activities
- Implementation phase of Resilience in School Environments (RISE) grant at six schools
- Principals engaging with compassion resiliency modules

Antiracism and Antibias

- District modules on documentation and behavior definitions best practices
- Best practices regarding creation of authentic relationships with students of color
- Classroom best practices on use of recovery area
- Student discipline committees' action plans created and monitored through student voice

Courageous Conversations

- Grace Lee Boggs Courageous Conversation Partnership Award
- 130 total sessions held
- Over 9,200 total staff members have attended

Timeline	Sessions
March 2021 - July 2021	17
August 2021 - July 2022	31
August 2022 - June 2023	46
August 2023 -February 2024	36
All Time	130

Restorative Practices

- Development of seminar - *Racial Justice and Equity: A Deep Dive into Restorative Practices*
- Additional training series being created
- Data discussion and collaboration with restorative practices partnership schools

Next Steps

- Completion of Phase 1 of Courageous Conversations about Race implementation plan
- *Beyond Diversity* seminar in February
- Historical Trauma PD sessions
- Sessions on trauma-sensitive practices and compassion resilience for administrators

Obama School of Career and Tech Ed (SCTE)

- Principal Jason Brazil
- Enrollment: 650
- 93.8% Black, 3.1% Hispanic, 0.5% White, 1.8% Multiple Races, 0.2% Asian, 0.5% American Indian
- Suspensions down 96 year-to-date



Obama SCTE: Climate Enrichment

- Identified areas of growth from last year
- City Year partnership for high school
- K-8 students moving with teacher
- Intake meetings for new students
- Communication with families regarding attendance
- School improvement plan action steps
- Building improvements and student gear

Obama SCTE: Climate Enrichment

- Expectations communicated in assemblies and within student handbook
- Student accountability through phone calls home when a student is late
- Student recognition and celebrations
- Student engagement with clubs, organizations, field trips, etc.
- Consistency in communication, staffing, recognition and consequences



**MILWAUKEE
PUBLIC SCHOOLS**

**Thank
You!**