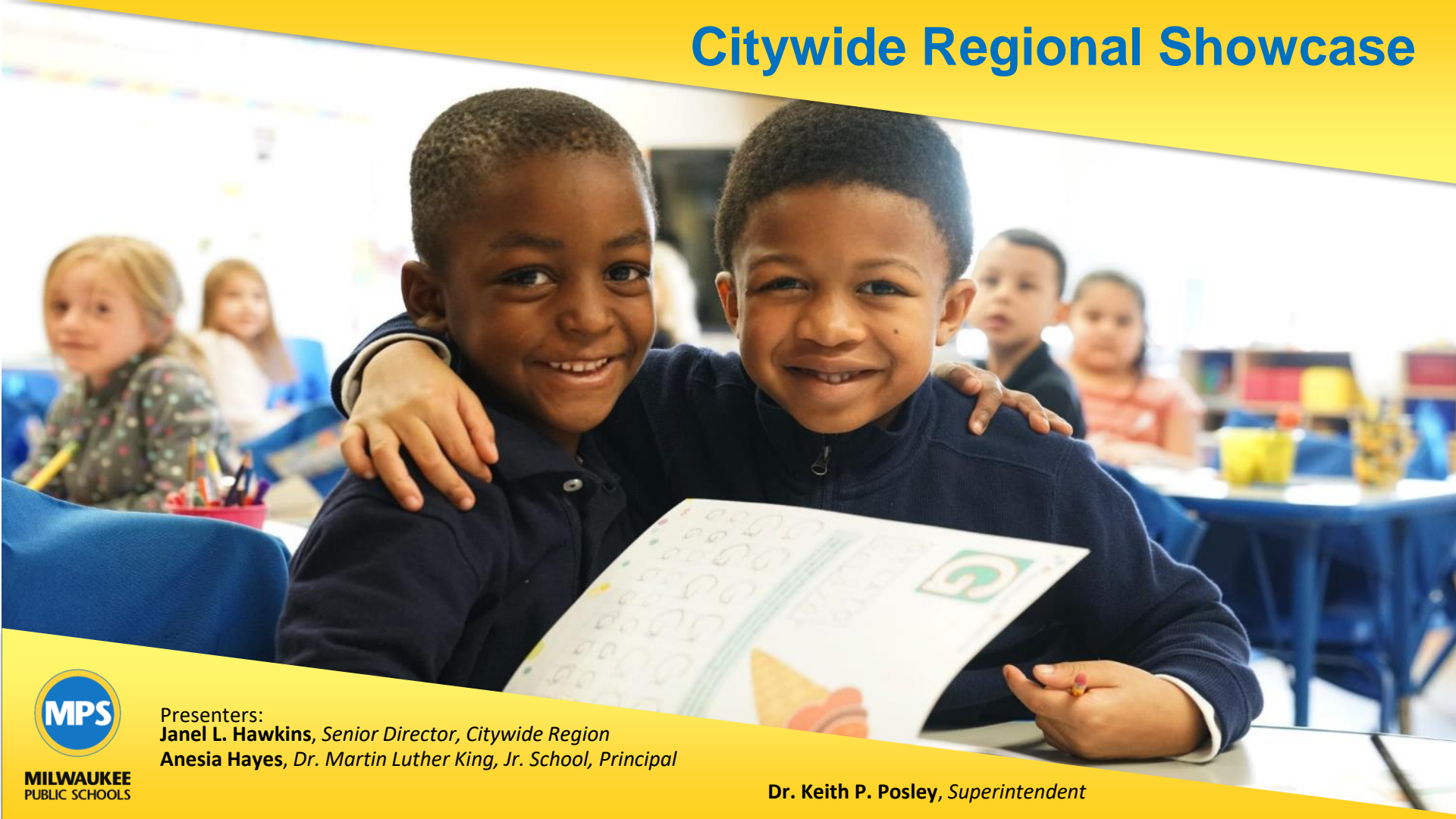


# Citywide Regional Showcase

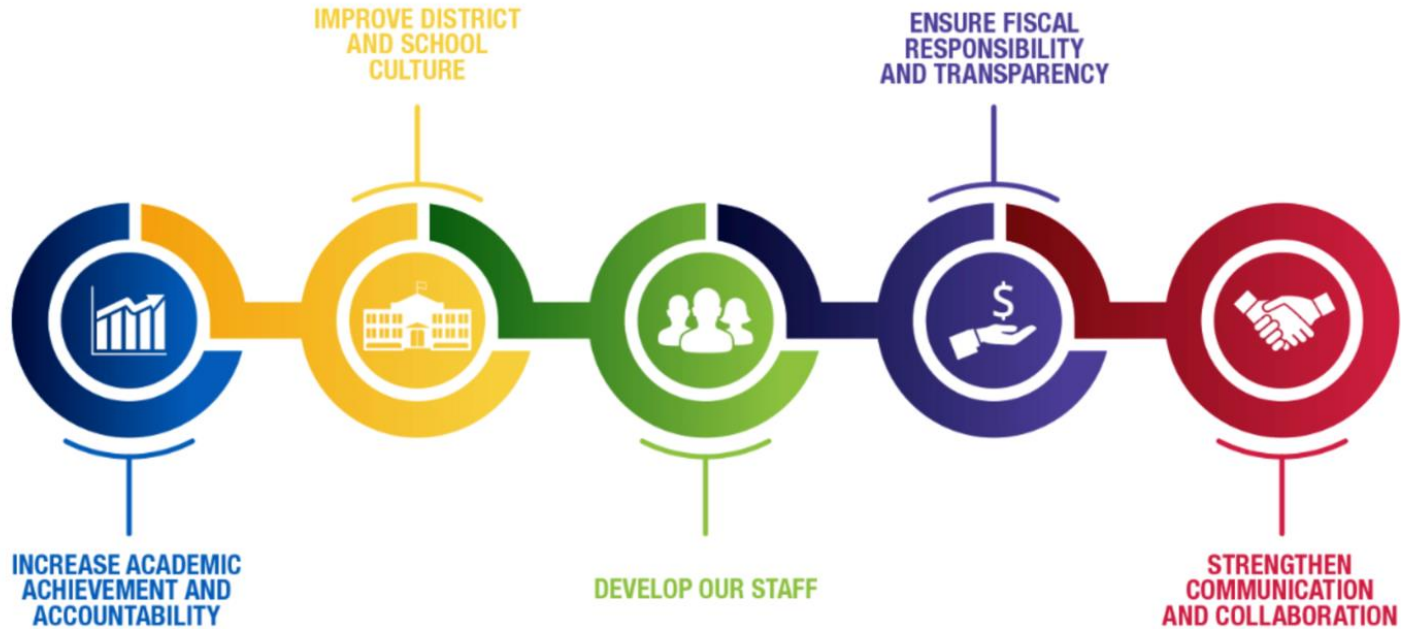


Presenters:  
**Janel L. Hawkins**, *Senior Director, Citywide Region*  
**Anesia Hayes**, *Dr. Martin Luther King, Jr. School, Principal*

**MILWAUKEE**  
PUBLIC SCHOOLS

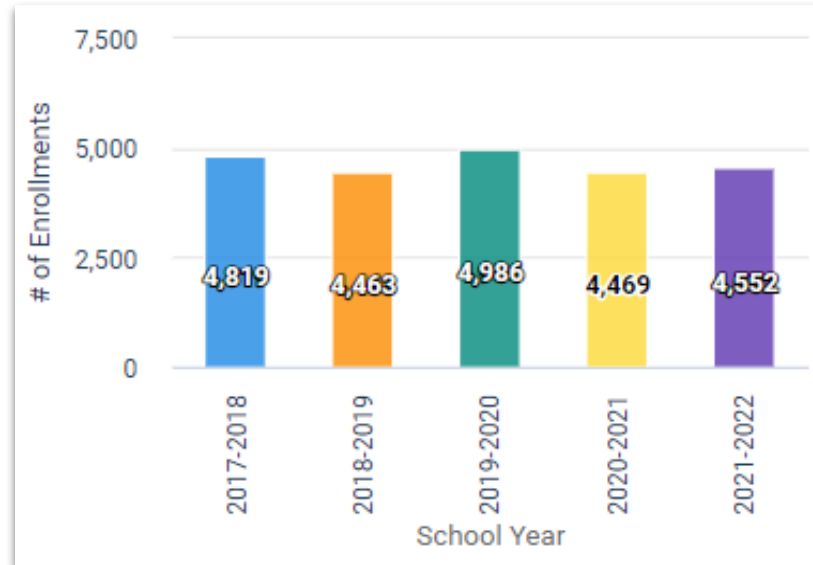
**Dr. Keith P. Posley**, *Superintendent*

# 5 Priorities for Success



# Citywide Region Overview

- 10 Schools:
  - 3 Elementary Schools (Grades K-8)
  - 6 Traditional Middle Schools (Grades 6-8)
  - 1 Middle/High School (Grades 6-11)
- Programming:
  - IB Programme
  - Gifted and Talented
  - Agriculture Focus
  - Arts Integration/Turnaround Arts
  - African-American Immersion
  - Community Schools Partnerships
  - City Year/ Violence Free Zone



# Citywide Region Data



## STAR Math Growth:

Showing growth in achievement and gap closure in pivotal grades **1** through **5** prior to entry into middle school

# Citywide Region Data Continued



## STAR Reading Growth:

Showing growth in achievement and gap closure in pivotal grades **2**, **4**, and **5** prior to entry into middle school

# Dr. Martin Luther King, Jr. School

---

## Mission

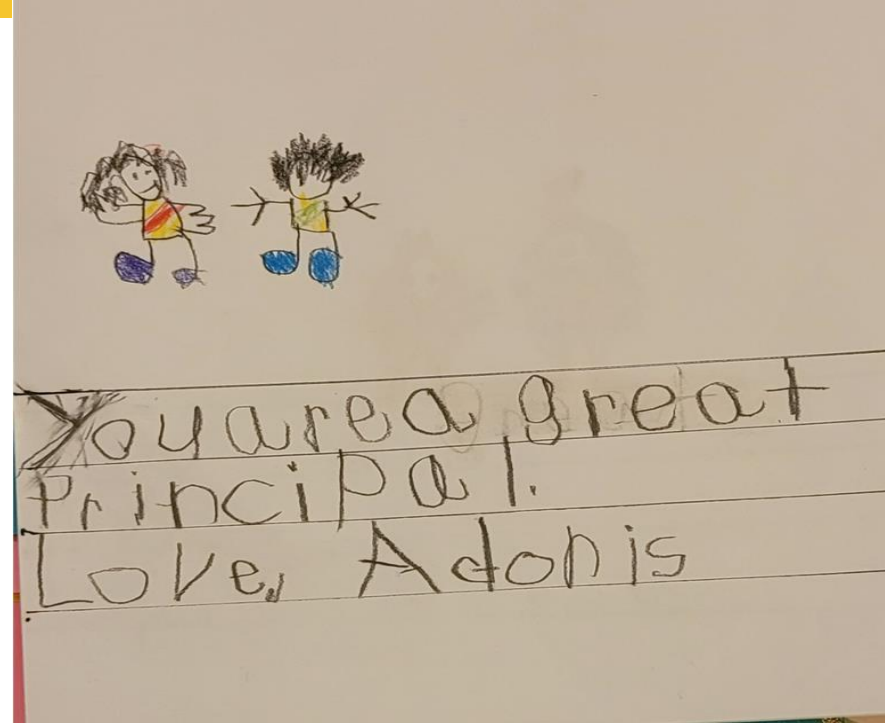
Dr. Martin Luther King, Jr. K-8 School will produce self determined learners through an African-American Immersion educational experience. We will utilize the arts as a tool and vehicle to raise dignity and equip all learners with the necessary skills for high academic achievement and pro-social behavior, preparing them for transformative engagement with our families and in their community and world.

**School Motto: Restoring Hope in the Dream!**



# Priority: Academic Achievement

- AmeriCorp (Reading Tutors)
- Guided Reading
- The Writing Revolution
- Increased on STAR Assessments (Fall-Winter)
- School-wide Intervention Block
- Drop-in Sessions with SST on Ambitious Instruction Strategies (Reading/Math/Writing)
- Uninterrupted reading and math blocks
- Full-time Specialists and support staff



# Priority: School Culture and Climate

- Black Lives Matter At School Week of Action
- Reduction in incident referrals and suspensions
- Turnaround Arts: Visual Thinking Strategies
- Increased enrollment
- Scholars that lead school-based programs (Ambassadors/School Announcers/Program planners/SEC & CSLT)
- Lion's Pride (monthly events, boosters, scholar dollars, etc.)
- Restorative Practice opportunities





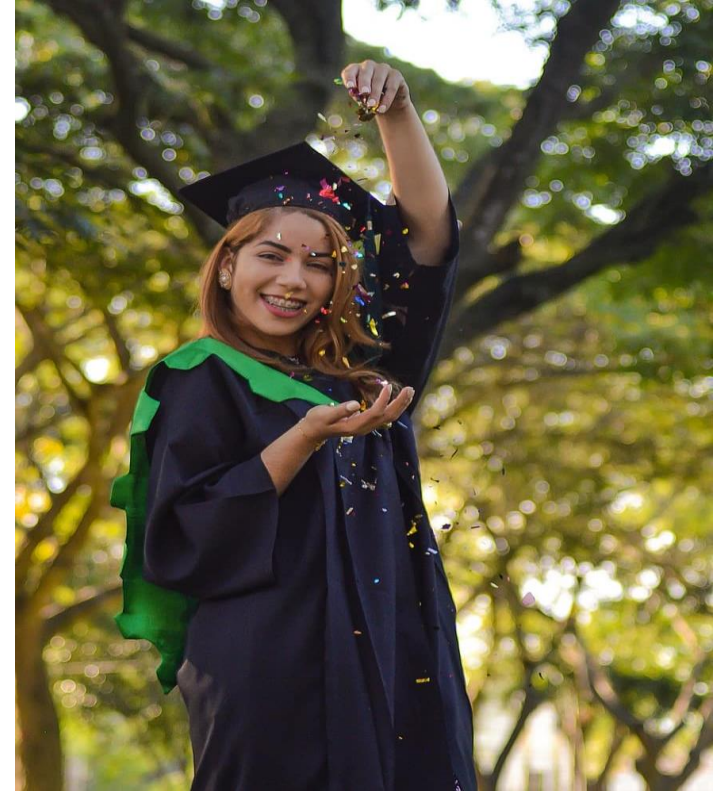
# Priority: Communication and Collaboration

- “New” Community Schools Partnership
- Bader Philanthropies
- WestCare, WI
- Lifestriders
- Heartlove Place
- Girl Scouts of America
- Mad Hot Ballroom
- True Skool
- Milwaukee Repertory Reading Residency
- Peace Learning Center
- Children’s Hospital
- Milwaukee Performing Arts Center
- Florentine Opera & Chicago Poetry



# Citywide Region - Opportunities for growth

- School Transformation
- Increase and improve teacher feedback
- Increase proficiency levels
- Improve culture and climate
- Reduce absenteeism
- Foundational skills in early literacy
- High School Readiness
- Extracurricular Activities



# Thank you.

Presenters:

**Janel L. Hawkins**, *Senior Director, Citywide Region*

**Anesia Hayes**, *Dr. Martin Luther King, Jr. School, Principal*



Dr. Keith P. Posley, *Superintendent*