

Family & Community Engagement Report

June 7, 2022



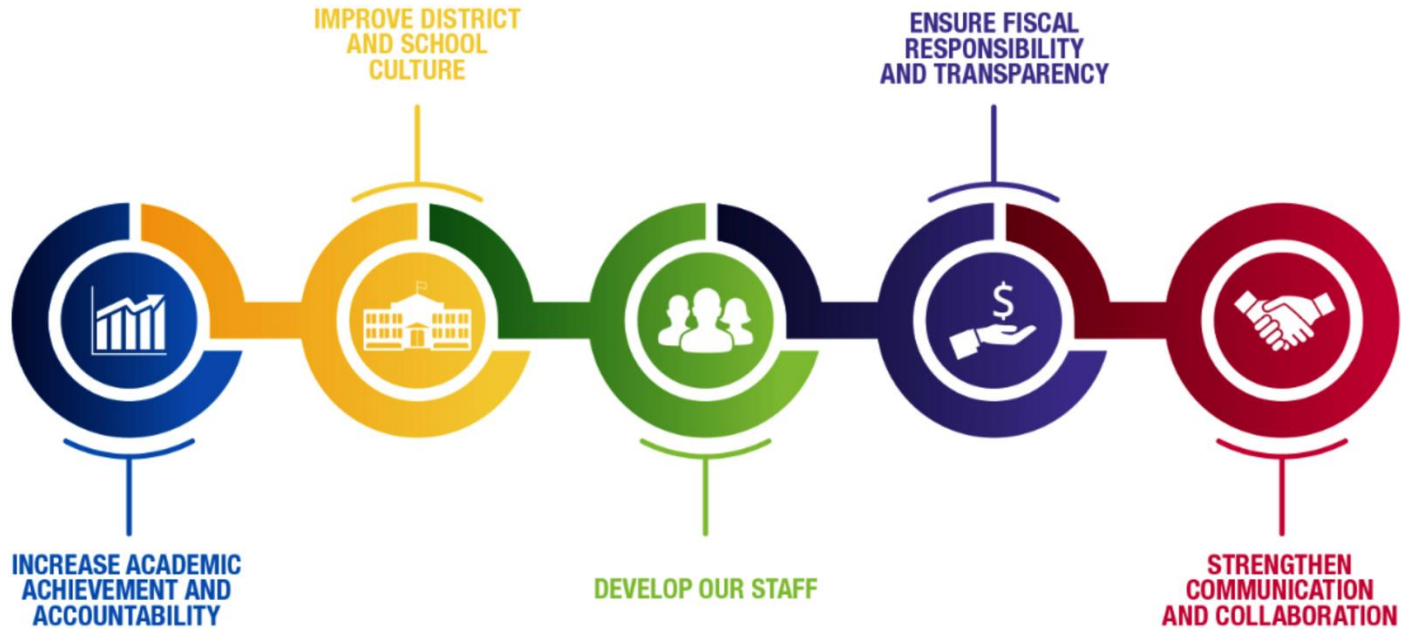
MILWAUKEE
PUBLIC SCHOOLS

Presenters:

Christy Stone, Director of Strategic Partnerships and Customer Service
Darryl Hall, Family Engagement Specialist

Dr. Keith P. Posley, *Superintendent*

5 Priorities for Success



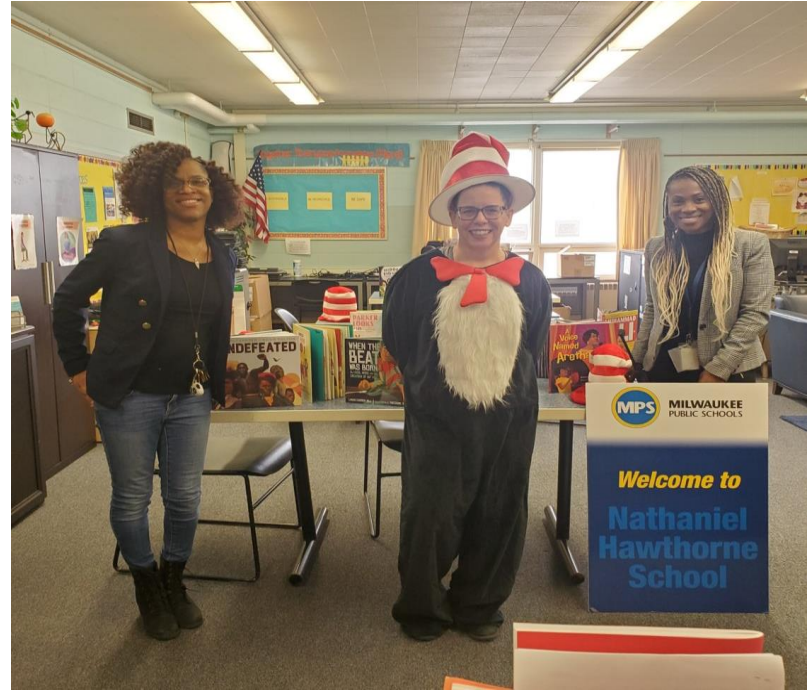
Family Engagement

Parent Coordinator Activities

Special Education Leadership
Institute for Families (SELIF)

District Advisory Council

Family Interest Survey



Alumni Engagement

Alumni Reunions

Teacher Appreciation Videos

Alumni Spotlights and Social Media

Alumni Advantage Newsletter



Superintendent's Student Advisory Council (SSAC)

Superintendent's Luncheons

New Model for School Organizations

Scholarship/Internship Opportunities

School Climate Conversations



Volunteer Engagement

Over 1800 Community Volunteers

Over 14,000 Hours Served

Volunteer of the Year Awards



Customer Service

Switchboard Averaged Over 7000
Calls Per Month

Welcome Center Assisted Over
2500 Families

Customer Service Training for
MPS Staff



Thank you.

