

MPS Summer School Programming

December 8, 2020



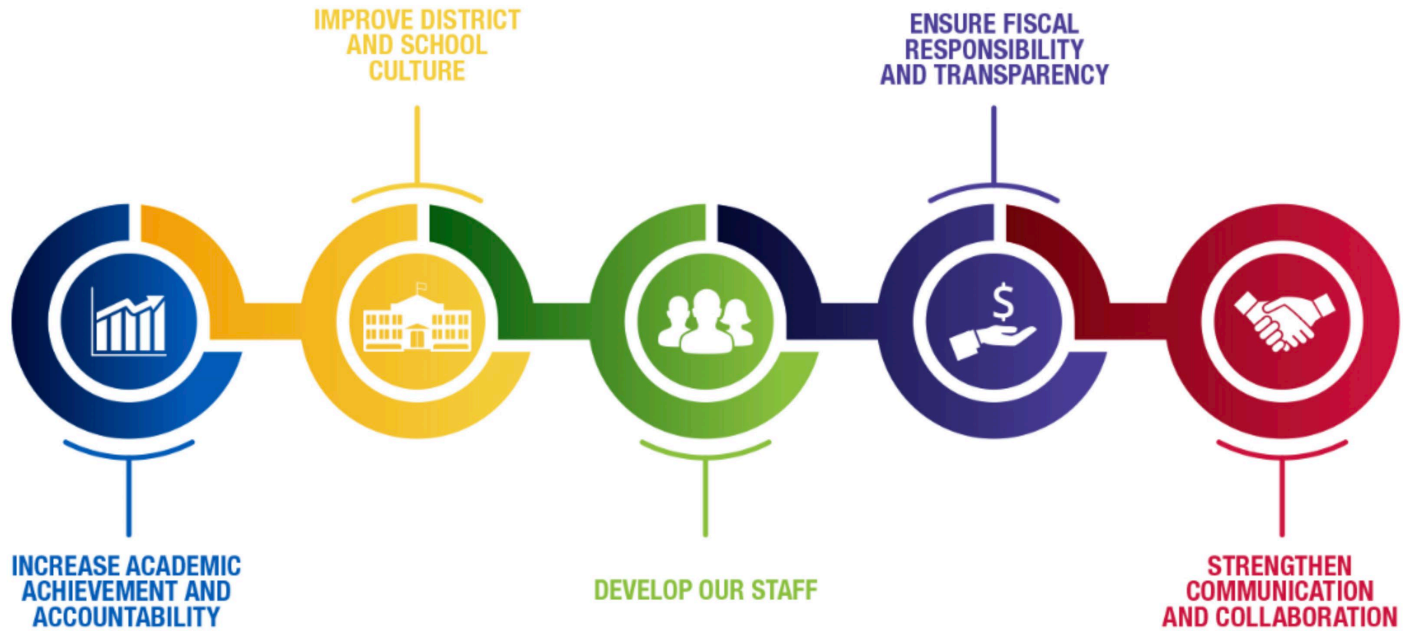
MILWAUKEE
PUBLIC SCHOOLS



Presenters: Dr. John R. Hill, Director, Department of College and Career Readiness
Natalie Anderson, Manager, Extended Learning Opportunities

Dr. Keith P. Posley,
Superintendent

Five Priorities for Success



What's New in Summer Academy

- **Virtual Summer Program** – for students with daytime commitments, offers credit recovery and acceleration
- **Skills Boost** – opportunity assists students in grades 9 and 10 who meet at-risk criteria and are credit-deficient in multiple subjects
- **Career Exploration Programs** – career-building courses that allow middle/high schools to showcase their specialized programs through a call for proposals
- **Explore Your Future** – academic skill/career-building camps with an academic and career-planning focus
- **Summer Academy—Exploration Camp** – acceleration model for an engaging six-week experience for K5–grade 8 students



Summer Curriculum



- Extended School Year (ESY) provides education services to students with disabilities.
- Bilingual Camp: 6 weeks and bilingual and ESL services
- Montessori Camp: 6 weeks
- High school focuses on credit recovery and acceleration with opportunities for career exploration, service-learning, and internships.
- Middle school grade 8 promotion
- Credit recovery and acceleration
- Alternative programs

High School Programming

June Session: June 7–July 1, 2021

July Session: July 6–29, 2021

- Monday–Friday, 8:30 a.m.–12:30 p.m.
- High school summer school includes:
 - Career exploration programs
 - Virtual summer program
 - Skills Boost
 - Extended School Year (ESY)
 - Face-to-face instruction (bilingual and English language learners)
 - Online learning
 - GED Option #2 and competency-based



Middle School Programming

June Session: June 7–July 1, 2021

July Session: July 6–29, 2021

- Monday–Friday, 8:30 a.m.–12:30 p.m.
- Middle school summer school includes:
 - Career exploration program
 - Explore Your Future
 - Extended School Year (ESY)
 - Academic and social-emotional programming
 - Bilingual and English language learner options
 - Acceleration options



Elementary Programming



Session: June 21–July 29, 2021 (6 weeks)

Monday–Friday, 8:00 a.m.–12:00 p.m.

- Exploration camps: Six one-week themed camps
- Extended learning adventures
- Breakfast and lunch provided
- Wraparound services provided
- Extended School Year (ESY)
- Bilingual and English language learner programs
- Montessori

Extended Learning Adventures

Complement classroom instruction

Innovative hands-on experiences while exploring STEM/STEAM:

- Wisconsin's unique heritage
- Natural environment
- Archaeology, paleontology, environmental science and life cycles
- Farm life
- Arts-integrated activities
- Gardening/culinary



Attendance and Sites

To increase efficiency and best support the needs of our families, we studied past sites and enrollment trends considering:

- Prior years' enrollment
- Capacity
- Location
- Wraparound services



See proposal.

Bridge Programs

- High School

- Goal: Enhance student confidence, self-esteem, academic preparation, and soft skills
- Location: 22 MPS high school sites
- Program length: 2 days

- Middle School

All 6–12 and traditional middle schools

- Provide sixth grade students an opportunity to form realistic expectations of what middle school will be like
- Build a sense of community
- Explore extracurricular activities
- Experience the difference between elementary and middle school

Scheduled in two-week window prior to first day of student attendance

School Instructional Options

Option 1

Full in person

Option 2

K5–8 sites

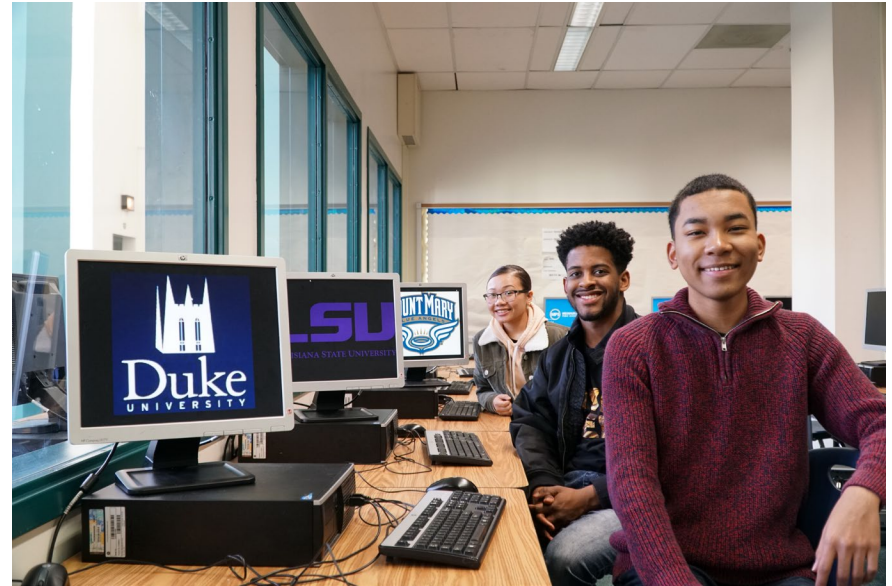
- Face-to-face classes with maximum class size of 10–15 students
- All-virtual option

High school

- All-virtual curriculum

Option 3

All curriculum will be delivered virtually



Thank you.

Presenters:

Dr. John R. Hill, Director, Department of College and Career Readiness

Natalie Anderson, Manager, Extended Learning Opportunities



Dr. Keith P. Posley, *Superintendent*

