



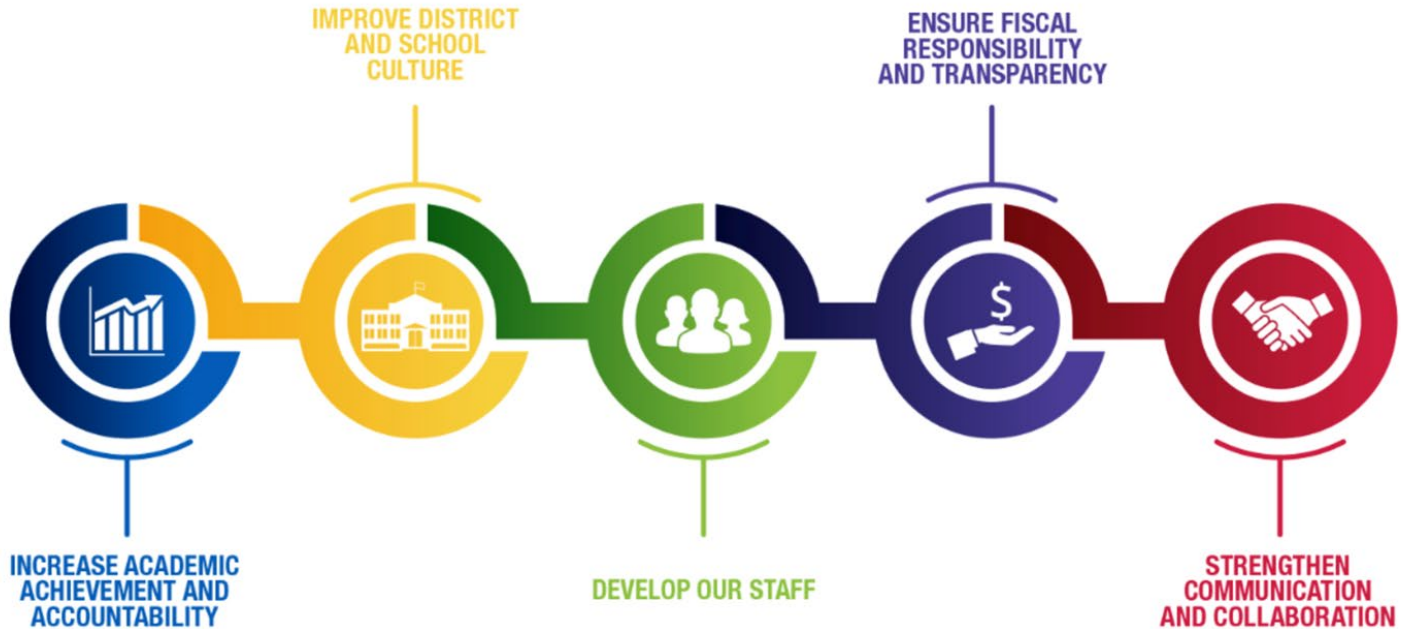
**MILWAUKEE  
PUBLIC SCHOOLS**

# District Advisory Council

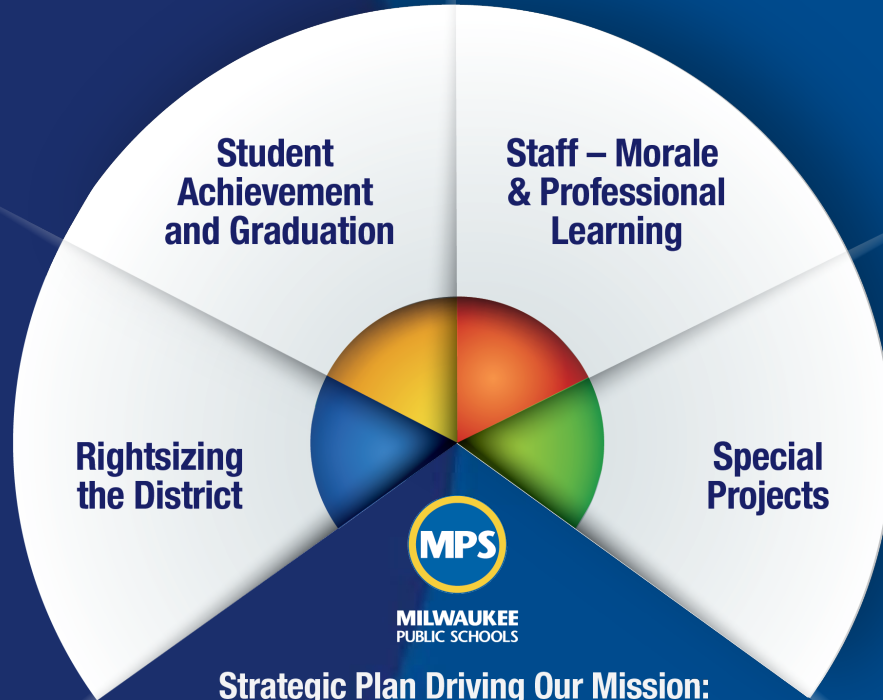
**Regina Stieber- Family and Community  
Engagement Associate**

**Eduardo Galván  
Interim Superintendent**

# *Five Priorities for Success*



# *Strategic Plan Driving Our Mission*



## **Strategic Plan Driving Our Mission:**

MPS is a diverse district that welcomes all students and prepares them for success in higher education, post-education opportunities, work, and citizenship.

# District Advisory Council (DAC)

---

- The District Advisory Council (DAC) was established as part of the Milwaukee Public Schools Title I program
- The DAC aims to ensure families of MPS students have a voice in district decision making
- The DAC consists of representatives from each school engaging in monthly meetings
- The minutes and calendar of meetings are shared with the Office of Board of Governance
- The DAC requests each school be joined by two family members of their currently enrolled student body
- All DAC meetings occur virtually the first Thursday of the month, October through May, from 6-7:30 pm

# DAC Membership

---

- Family member or guardian of an MPS student
- Attend monthly meetings
- Provide regular updates to schools regarding information shared at the DAC meeting bring
- Work with the School Engagement Council and the Parent Coordinator
- Participate in discussions and official votes
- Delegates are encouraged to participate in leadership positions or serve on committees within the DAC

# DAC Executive Committee

---

Name	Position	School
Joelle Worm	Chair	Maryland Ave Montessori
Briana Fox	Member	Milwaukee Spanish Immersion
Nicole Crown	Member	Engleberg and Green Tree prep
Jazmine Blakley	Member	Lloyd Barbee Montessori Parent Coordinator

# DAC Executive Committee Members

---

DAC Executive committee chair update on the work this year  
with the PACE committee and upcoming areas of focus

Joelle Worm - Maryland Ave Montessori

# DAC Topics 2024-25 School Year

---

- Member Orientation
- Focus Group on the Qualities Needed in the Next Superintendent of Milwaukee Public Schools
- Teaching Lab Discussion on MPS Teacher Recruitment and Retention
- Presentation from Superintendent on MPS Safe Haven Policy
- Long Range Facility and Maintenance Master Plan
- Local and State School Budgets
- Good School Food Project & Parent Ambassadors
- MPS Bus App - Parent Pilot
- Collaboration with Parent and Community Engagement Committee (Pace)





**MILWAUKEE  
PUBLIC SCHOOLS**

**Thank  
You!**