



MPS/MKE Early Childhood 1,825 Initiative Update

January 12, 2023



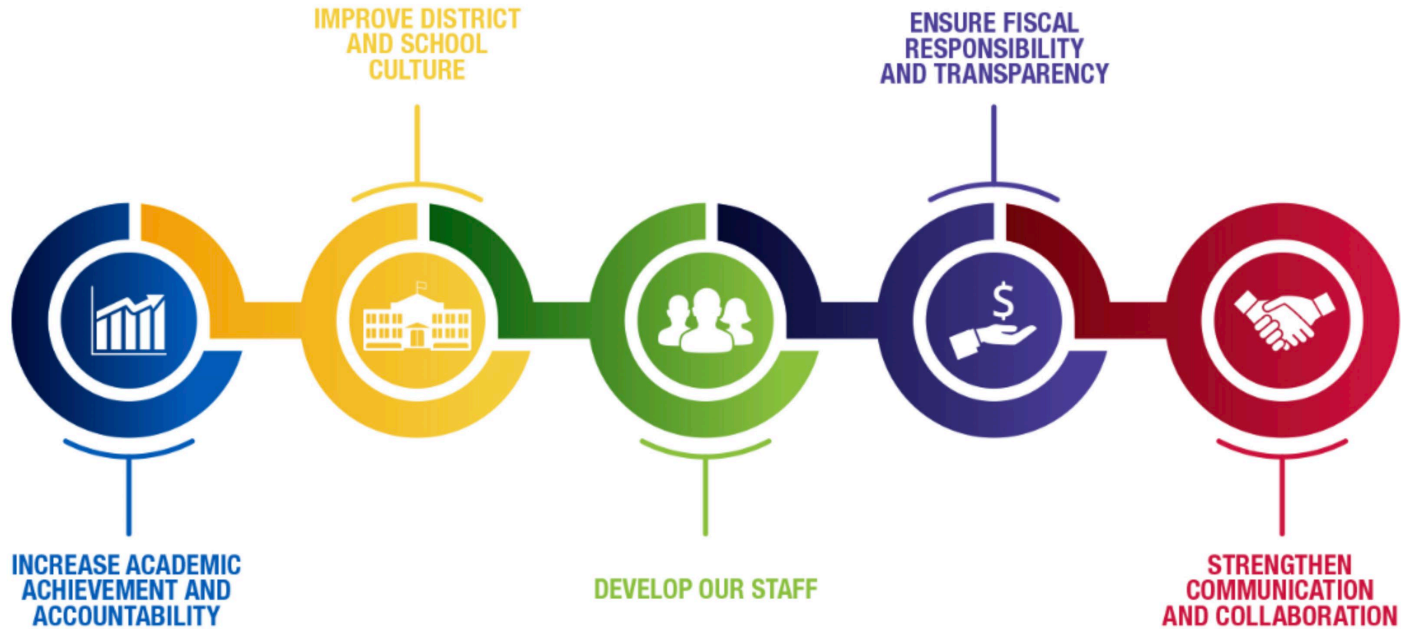
MILWAUKEE
PUBLIC SCHOOLS



Presenter: Krissy Washington, Early Learning Manager
Department of Curriculum and Instruction

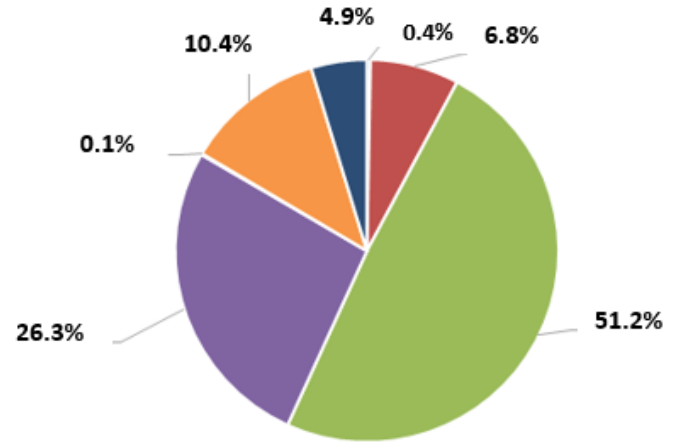
Dr. Keith P. Posley,
Superintendent

Five Priorities for Success



Early Childhood Demographics

- 11,298 students
- 111 schools
- 6.7% English language learners
- 18.2% special education
- 80.2% economically disadvantaged



■ American Indian
■ Black/African American
■ Hawaiian or Pacific Islander
■ Asian
■ Hispanic
■ White






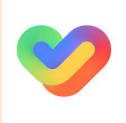



Early Childhood Initiative Focus and Goals

Early Childhood Staff Development	Equitable Resources	Family Support and Transition	Instruction	Social-Emotional Learning and Cultural and Linguistic Needs
<p>Provide high-quality professional learning opportunities for all early childhood care providers and educators</p>	<p>Ensure that early childhood programs are equitably equipped with resources needed to meet the needs of the children and families they serve</p>	<p>Provide families with support as students transition from early care centers to MPS</p>	<p>Ensure that high quality, research-based instruction is provided for all early childhood children and students</p>	<p>Provide support for students to address SEL needs as well as take into consideration the cultural and linguistic needs of students</p>



Completed Work

Early Childhood Staff Development	Equitable Resources	Family Support and Transition	Instruction	Social-Emotional Learning and Cultural and Linguistic Needs
<p>Presented a session at the Pathways to Quality Conference</p> 	<p>Continued partnership work with the Bridges to School MKE project</p> 	<p>Installed three interactive Pop Spots</p>  <p>Updated the MPS Portal to include early childhood resources and information</p> 	<p>Shared MPS EC Initiative information at leadership forum</p>  <p>Shared emotional regulation support information</p>  <p>How We Feel</p>	<p>Established a training for the community on self regulation and self care</p> 

Current Work

Early Childhood Staff Development	Equitable Resources	Family Support and Transition	Instruction	Social-Emotional Learning and Cultural and Linguistic Needs
<p>Finalizing a contract for a SOLELY Series supporting oral language development</p>  	<p>Continue partnership work on the Bridges to School MKE project</p>  	<p>Attend Family Empowerment Program (FEP) training sessions</p> 	<p>Connect with CTSI CAN network to offer Vroom and Mind in the Making training within the Milwaukee community</p> 	<p>Market training on self regulation and self care within the community</p> 

Future Work

Early Childhood Staff Development	Equitable Resources	Family Support and Transition	Instruction	Social-Emotional Learning and Cultural and Linguistic Needs
<p>Plan for additional professional development sessions that support Ambitious Instruction</p>  	<p>Continue partnership work with Office of Early Childhood Initiatives on Mighty Small Moments</p> 	<p>Supporting Bridges to School MKE family events</p> 	<p>Attend professional development opportunities focused on early childhood education</p> 	<p>Connect with the Institute for Child and Family Well-Being to discuss potential workshop opportunities</p> 

Thank you.



Dr. Keith P. Posley, *Superintendent*

© 2022 Milwaukee Public Schools • 8

