



**MILWAUKEE**  
PUBLIC SCHOOLS

# Postsecondary Enrollment

**October 10, 2024**

**Mr. Eduardo Galván**  
*Interim Superintendent*



**MILWAUKEE  
PUBLIC SCHOOLS**

# Postsecondary Enrollment

## *Presenters*

**Ericca Pollack**

College and Career Centers Coordinator  
Department of College and Career Readiness

## *Student Presenter*

**Amora Cannon**

Golda Meir Class of 2024  
UW–Milwaukee Student

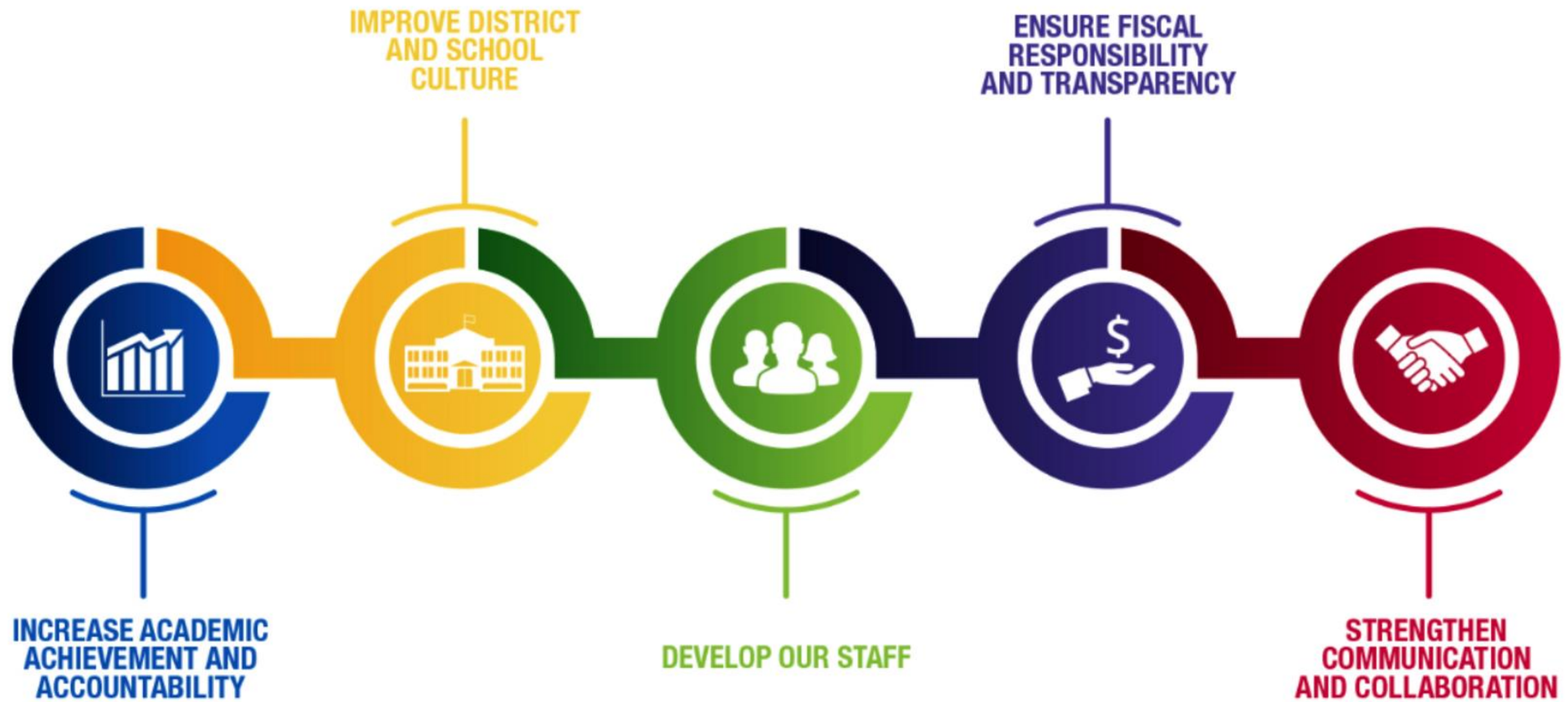
# *Strategic Plan Driving Our Mission*



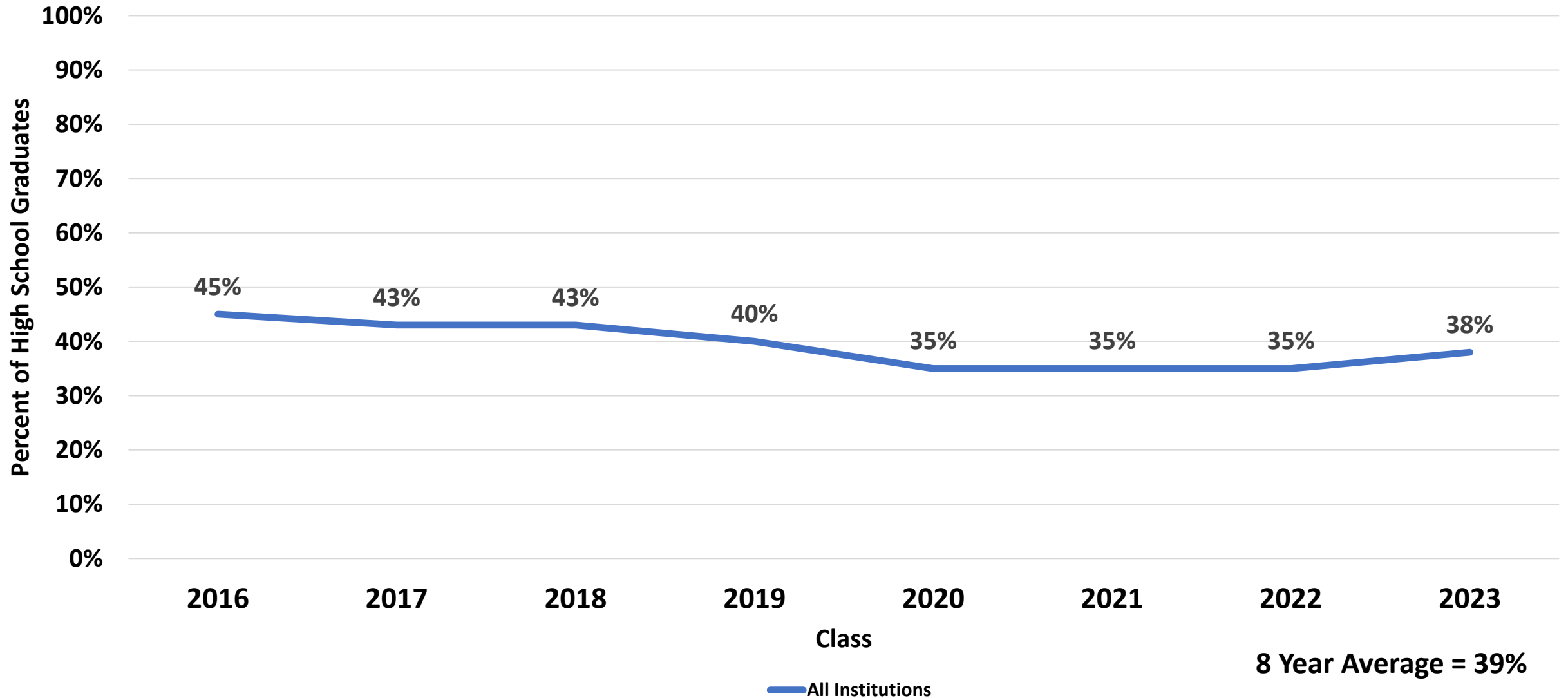
## **Strategic Plan Driving Our Mission:**

MPS is a diverse district that welcomes all students and prepares them for success in higher education, post-education opportunities, work, and citizenship.

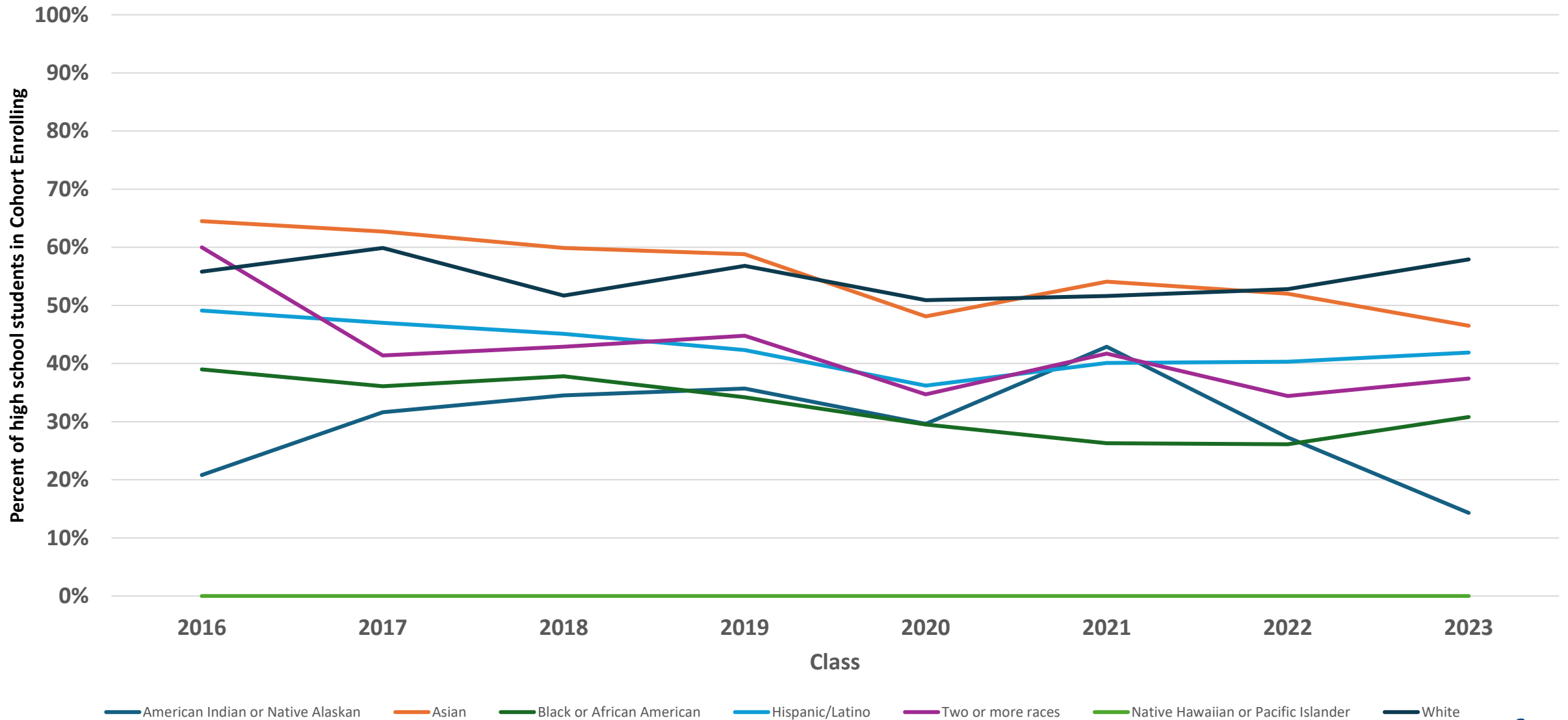
# *Five Priorities for Success*



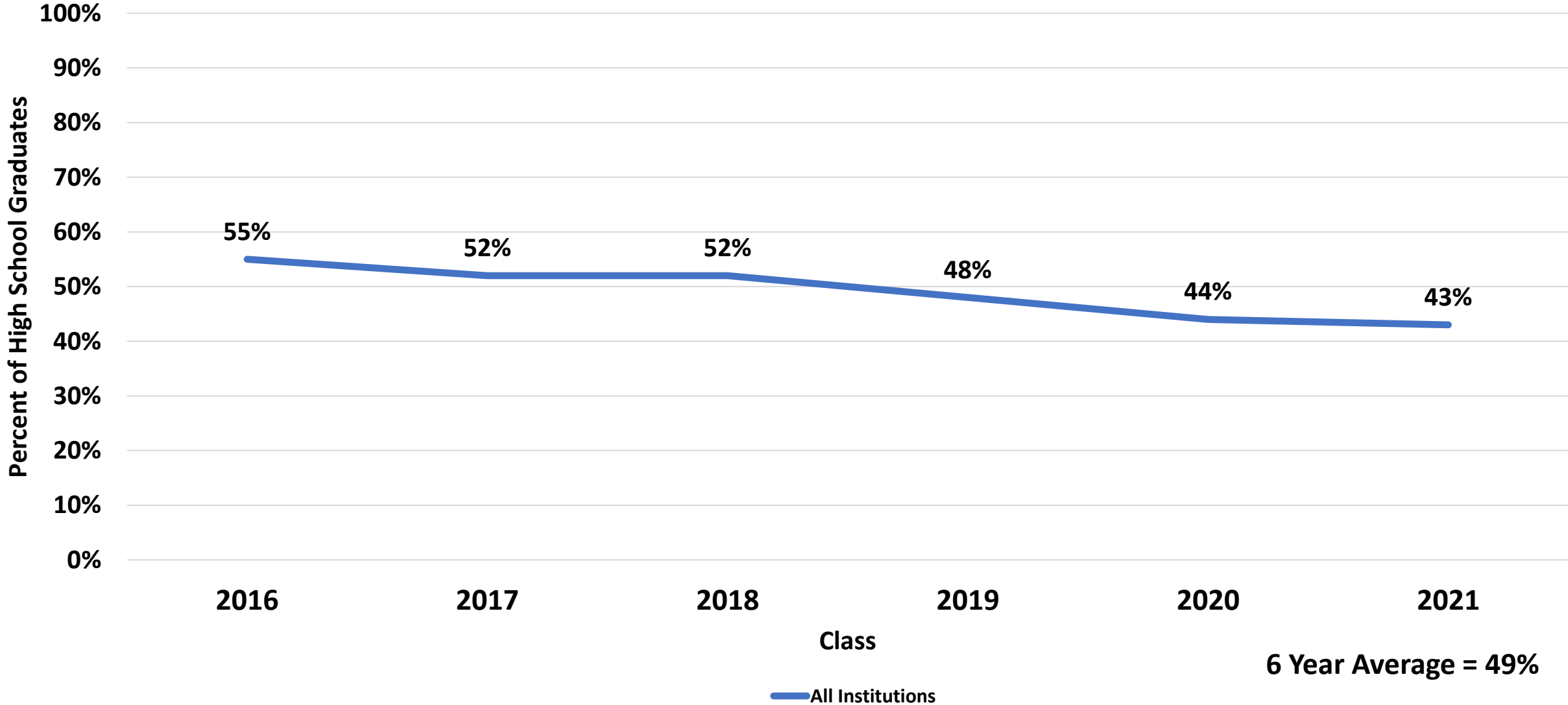
# Postsecondary Enrollment the Fall Following Graduation



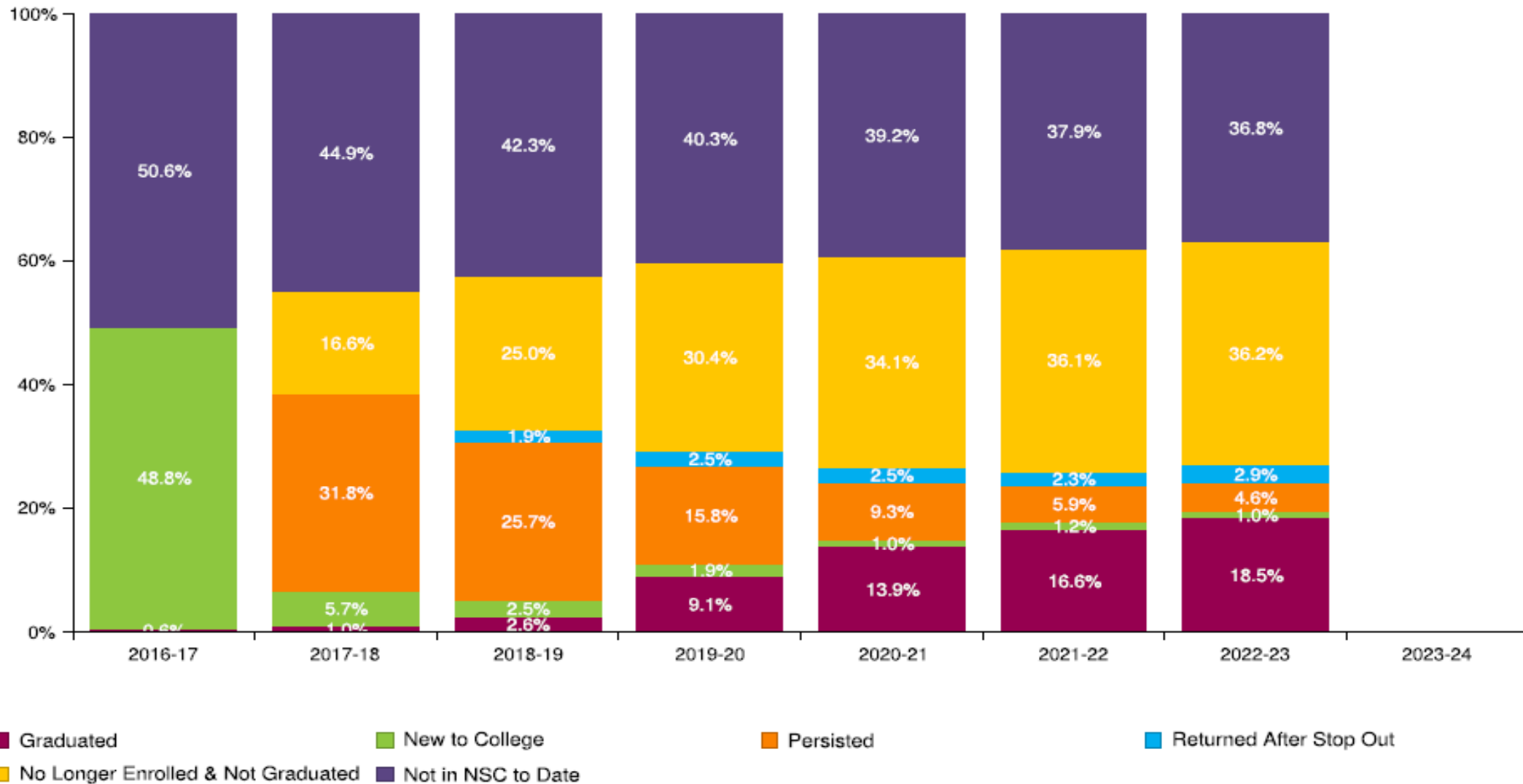
# Postsecondary Enrollment the Fall Following Graduation by Race/Ethnicity



# Postsecondary Enrollment Two Years Following Graduation



# Class of 2016 Postsecondary Enrollment and Progress





# Top 10 Universities – Class of 2023

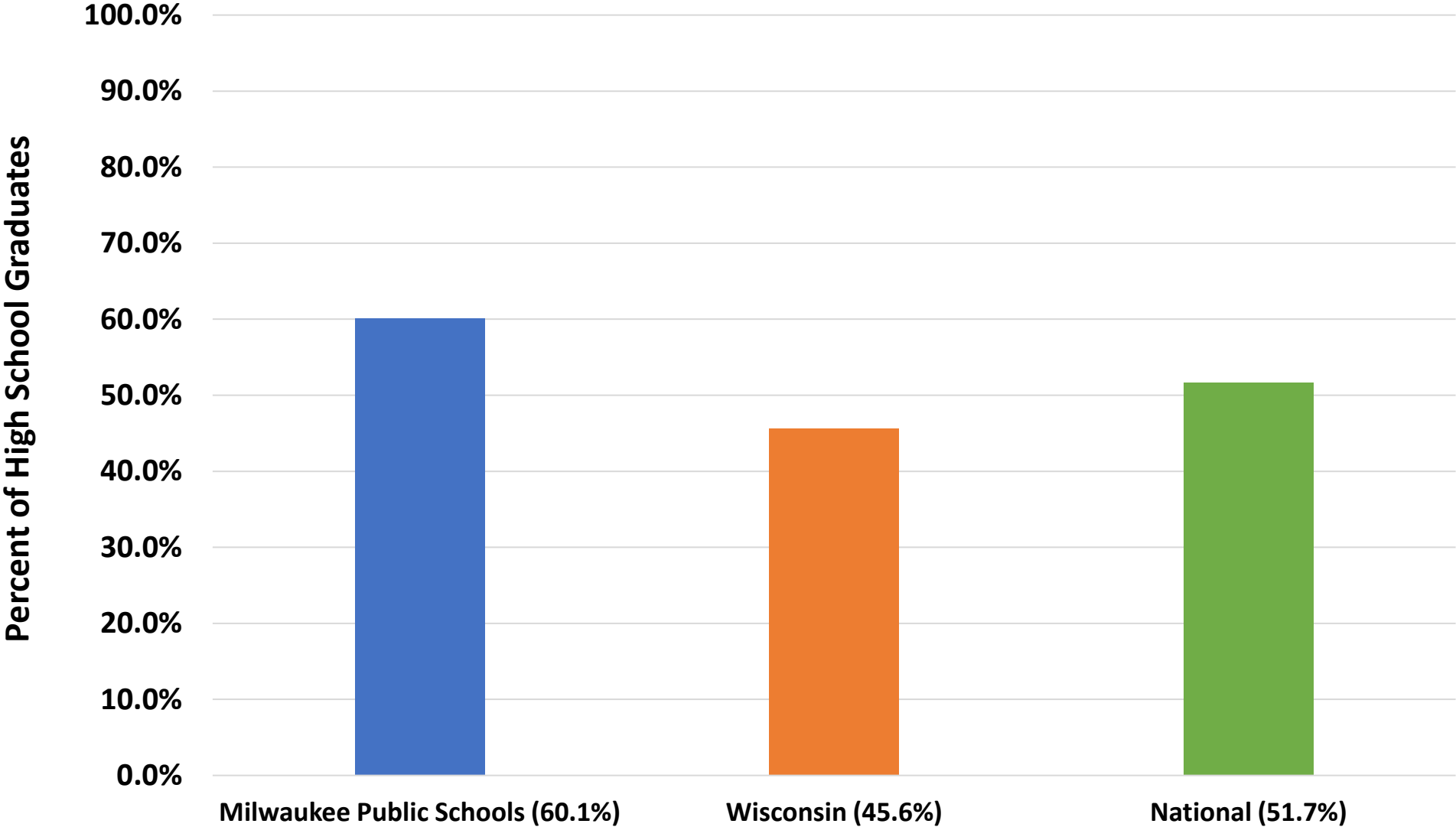
Rank	Institution	Number of Students
1	Milwaukee Area Technical College	492
2	University of Wisconsin–Milwaukee	305
3	University of Wisconsin–Madison	123
4	Marquette University	83
5	Mount Mary University	51
6	Alverno College	49
7	University of Wisconsin–Whitewater	42
8	Milwaukee School of Engineering	28
9	University of Wisconsin–Parkside	16
10	Waukesha County Technical College	14

# College and Career Centers

- Opened in August 2017: twenty-one College and Career Centers in all traditional high schools. CACC advisor support is also provided in alternative high schools.
- The CACCs are open during school hours and after school to assist students in grades 9–12:
  - College advising and admissions
  - Financial aid
  - Scholarship applications
  - Pre-college programs
  - Resume writing
  - Youth apprenticeship and internship applications
  - ACT/SAT registration
  - Job applications
- CACCs serve as physical hub for higher education, career, and community partners.



# 2024–25 FAFSA Completion\*



\*as of 9/13/24

# Postsecondary Partnerships

- **M-Cubed Smart Start**  
Scholarship and success coaching for MPS graduates at UWM and MATC
- **Milwaukee Direct Admit and Direct Admit Wisconsin**  
Year one of direct admissions programs for Class of 2025
- **All-In Milwaukee**  
College completion and scholarship program
- **PEOPLE Program**  
Pre-college program for grades 9–12 MPS students
- **United Negro College Fair Empower Me Tour**  
HBCU college fair and scholarship event
- **UW–Madison**  
Expanded recruitment efforts and MPS-specific campus visits

