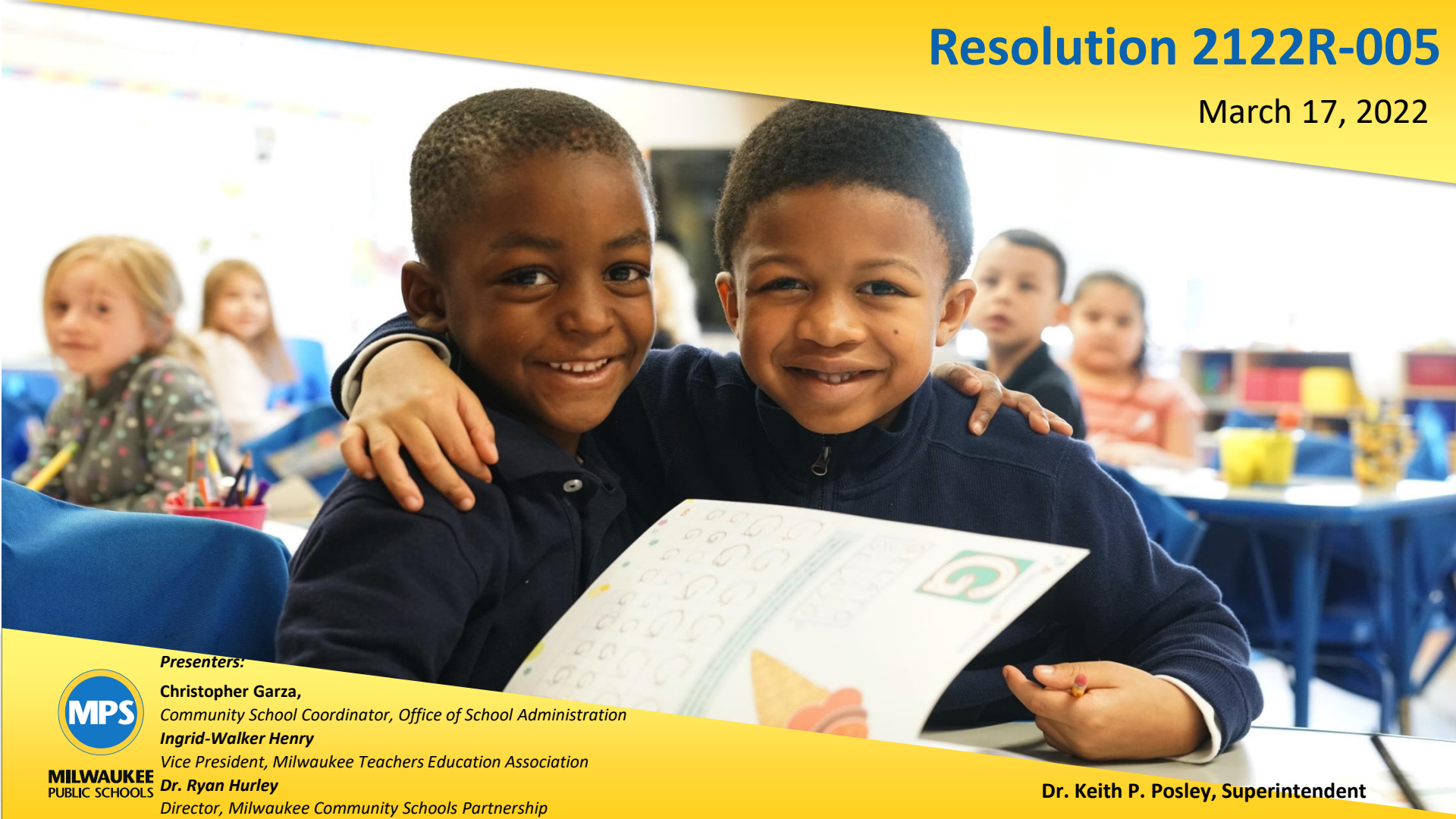


# Resolution 2122R-005

March 17, 2022



**Presenters:**

**Christopher Garza,**  
*Community School Coordinator, Office of School Administration*

**Ingrid-Walker Henry**  
*Vice President, Milwaukee Teachers Education Association*

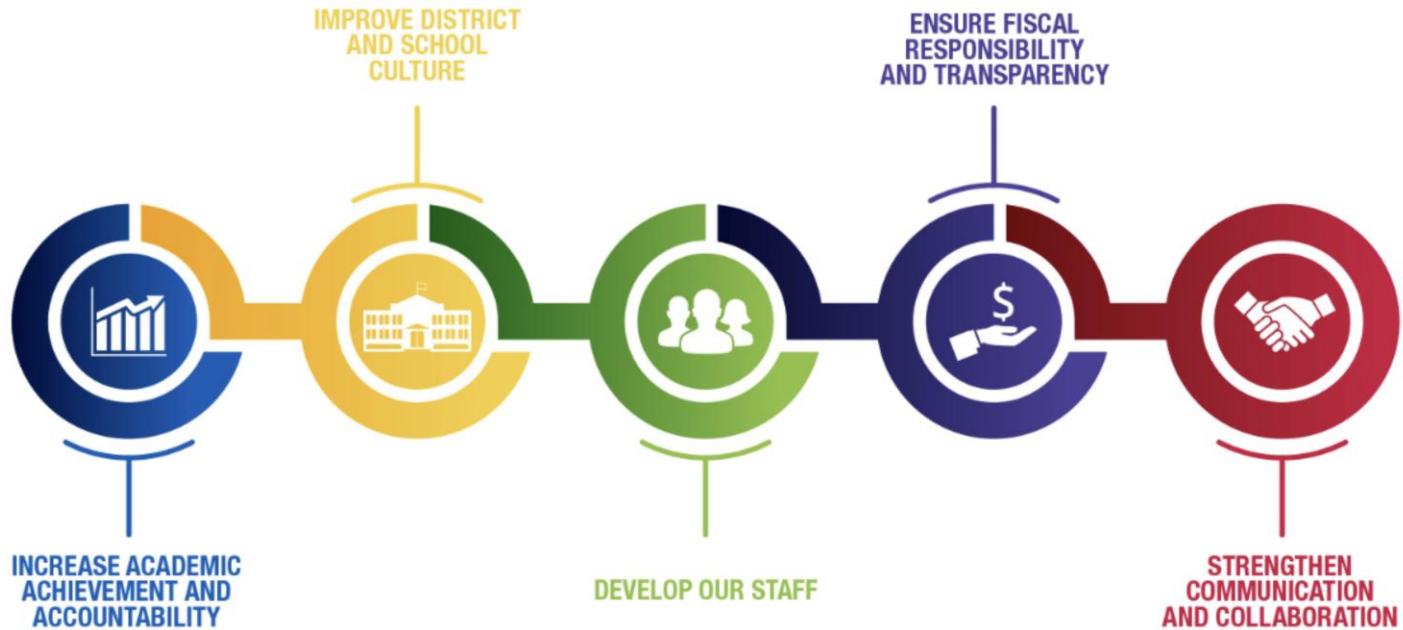
**Dr. Ryan Hurley**  
*Director, Milwaukee Community Schools Partnership*



**MILWAUKEE**  
PUBLIC SCHOOLS

**Dr. Keith P. Posley, Superintendent**

# Five Priorities for Success



# Resolution 2122R-005

- Workgroup to be established to craft a Community Schools policy to guide the current Community Schools and the expansion of Community Schools
- Workgroup to be led by representatives of the Milwaukee Public Schools Administration, the United Way, the Milwaukee Teachers Education Association, and Community School Coordinators and incorporate substantive input from various stakeholder groups
- The primary focus is crafting policy focusing on the key practices of Community Schools and following the Community Schools strategy.

# Workgroup Members 2021-2022

## Cultural Relevance

- Rosa Cerda – Principal
  - Renee Drane – Principal
  - Nicolo Onorato – MTEA
  - Heather Ebbott – Educator
  - Eliza Aldape – Educator
  - Dr. Ryan Hurley – United Way
  - Dom Portis – Milwaukee Christian Center
  - Brandyce Tolbert-Rivas – Parent
  - Jaime Gilbert – Parent
- 
- Dr. Ryan Hurley – Co-Facilitator
  - Dom Portis – Co-Facilitator

## Equity

- Maurice Turner – Director, Instructional Leadership, High School Region
  - Chris Garza – District Community Schools Coordinator
  - Nora O’Connell – Educator
  - Angie Marie Soto – Educator
  - Flor Mauricio – Educator
  - Briana Fox – Social Development Commission
  - Kimberly Bikulcius – Milwaukee Urban League
  - Nora Godoy-Gonzalez – Journey House
  - Clorice Simpson-Nickens – Parent
  - Clarissa Morales – Parent
- 
- Chris Garza – Co-Facilitator
  - Briana Fox – Co-Facilitator

## Shared Leadership

- Dr. Jan Griesbach – Director, Instructional Leadership, Southwest Region
  - Jose Trejo – Principal
  - Natosha Harris – Principal
  - Ingrid Walker-Henry – MTEA
  - Tjuna Eggson – Educator
  - Jacqueline Roberts – Educator
  - Carmen McBride – Educator
  - Glenn Carson – United Way
  - Francisco Sanchez – Sixteenth Street Clinic
  - Ludys Ebratt – Sixteenth Street Clinic
  - Stacy Carlos – Parent
  - Elga Zatino – Parent
- 
- Natosha Harris – Co-Facilitator
  - Francisco Sanchez – Co-Facilitator



# Advisory Committee Members 2021-2022

## Cultural Relevance

- Rosa Cerda – Principal
- Renee Drane – Principal
- Dr. Ryan Hurley – United Way
- Dom Portis – Milwaukee Christian Center

## Equity

- Chris Garza – District Community Schools Coordinator
- Briana Fox – Social Development Commission

## Shared Leadership

- Dr. Jan Griesbach – Director, Instructional Leadership, Southwest Region
- Jose Trejo – Principal
- Natosha Harris – Principal
- Ingrid Walker-Henry – MTEA
- Glenn Carson – United Way
- Francisco Sanchez – Sixteenth Street Clinic

# The Process



**Community  
Conversations Data**



**Mid-Year Self  
Reflection  
School Reports**



**Workgroup Discussion &  
Recommendations**



**Revise policy language**



**PQP  
Process  
Praise, Question  
& Polish**



**Crafting draft  
policy Language**

# Resolution 2122R-005 Update: New Partnership Language

## Milwaukee Community School Partnership Steering Committee

## Purpose

<b>Milwaukee Public Schools</b>	<b>Milwaukee Teachers Education Association</b>	<b>United Way</b>
The steering committee shall be composed of nine (9) members, three (3) representing each party		
Each partner will designate one (1) lead from the partner's three (3) steering committee members		

Open Communication between all the partners
Ongoing collaboration within the partnership
Joint-decision making representing all the partners
Support, facilitate and lead the work of the Milwaukee Community School partnership



# Next Steps





# Thank you.

**Presenters:**

**Christopher Garza,**

*Community School Coordinator, Office of School Administration*

**Ingrid-Walker Henry**

*Vice President, Milwaukee Teachers Education Association*

**Dr. Ryan Hurley**

*Director, Milwaukee Community Schools Partnership*



**Dr. Keith P. Posley, Superintendent**

