

# MPS Summer School Programming

December 2022



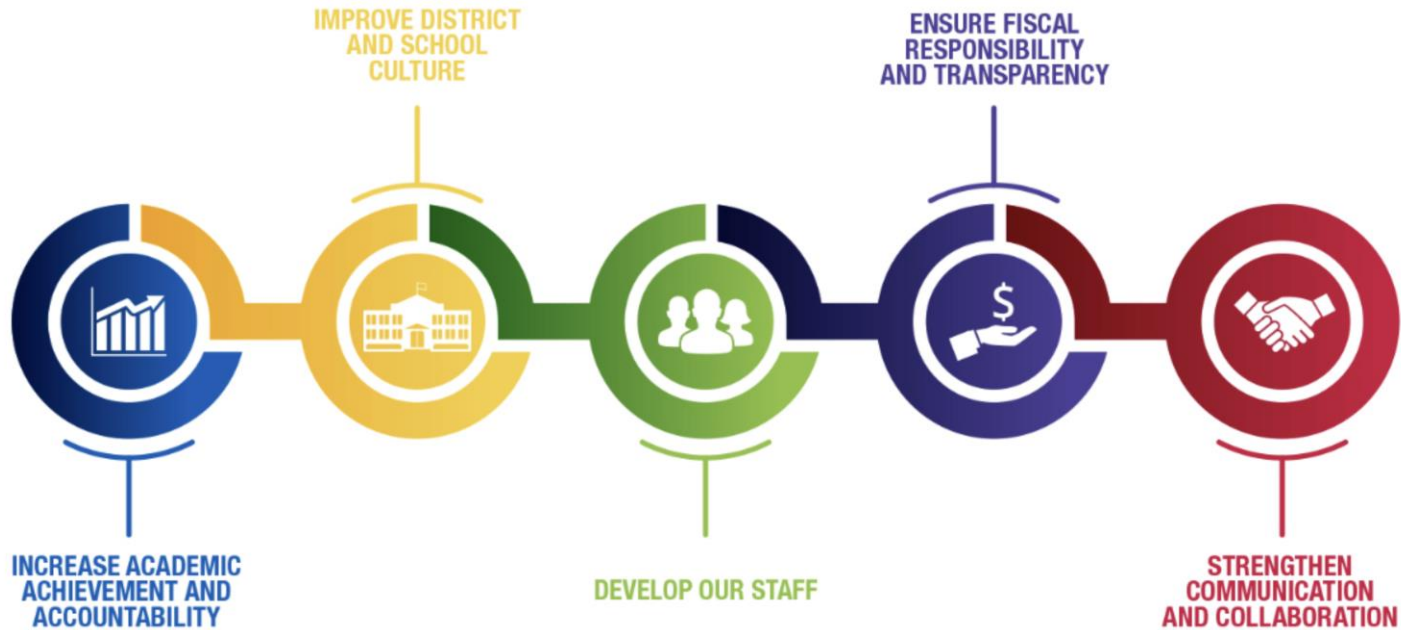
**MILWAUKEE  
PUBLIC SCHOOLS**



**Presenters:** Dr. John R. Hill, Director, Department of College and Career Readiness  
Natalie Anderson, Manager, Extended Learning Opportunities

Dr. Keith P. Posley,  
*Superintendent*

# Five Priorities for Success



# Highlights From Summer Academy 2022

- Over 3100 courses completed
- 128 college credits earned
- 149 Graduates
- Over a dozen new programs offered
- 295 courses recovered in virtual night school
- In person and off-site Adventures



# High School Programming

**Session I: June 6–June 22, 2023**

**Session II: June 26– July 27, 2023**

- Student Day Monday–Friday, 8:00 a.m.–1:00 p.m.
- Staff Day Monday–Friday, 7:30 a.m.–1:00 p.m.
- High school summer school includes:
  - College 101
  - Specialty Courses
  - Career exploration programs
  - Virtual summer program
  - Extended School Year (ESY)
  - Online learning
  - GED Option #2 and competency-based

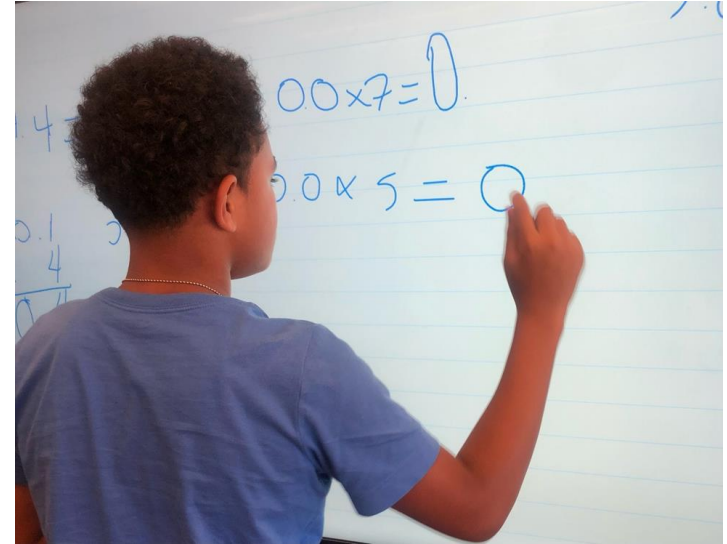




# Middle School Programming

**June 26– July 27, 2023**

- Student Day Monday–Friday, 8:00 a.m.–12:00 p.m.
- Staff Day Monday–Friday, 7:30 a.m.–12:00 p.m.
  
- Middle school summer school includes:
  - Career exploration program
  - Science of Design
  - Extended School Year (ESY)
  - Academic and social-emotional programming
  - Bilingual and English language learner options
  - Acceleration options



# Elementary Programming



**June 26–July 28, 2022 (5 weeks)**

- Student Day Monday–Friday, 8:00 a.m.–12:00 p.m.
- Staff Day Monday–Friday, 7:30 a.m.–12:00 p.m.
  
- Exploration camps: one-week themed camps
- Extended Learning Adventures
- Breakfast and lunch provided
- Wraparound services provided
- Extended School Year (ESY)
- Bilingual and English language learner programs
- Montessori

# Extended Learning Adventures

**Complements classroom instruction**

**Innovative hands-on experiences while exploring STEM/STEAM:**

- Wisconsin's unique heritage
- Natural environment
- Archaeology, paleontology, environmental science and life cycles
- Farm life
- Arts-integrated activities
- Gardening/culinary



# Sites and Registration

To increase efficiency and best support the needs of our families, we studied past sites and enrollment trends considering:

- Prior years' enrollment
- Capacity
- Location
- Wraparound services

See proposal.

Proposed Summer Site	Childcare	Summer Programming
<b>Elementary</b>		
Allen Field	CLC	ESL/Bilingual
Bethune	CLC	ESL/ESY
Browning	Safe Place	
Cass	CLC	
Clemens	Camp	
Fernwood	Camp	
Grantosa	CLC	ESY
Manitoba	Camp closed	ESL
Maple Tree	CLC	
MLK Jr.	N/A	
Rogers	N/A	ESL/Bilingual/ESY
Sherman		
<b>High School</b>		
Bradley Tech	CLC	ESL
Milwaukee School of Languages	N/A	
WCLL	N/A	
<b>Montessori</b>		
MacDowell	Camp	
<b>Alternative sites</b>		
Auer Avenue		
Hi Mount	Closed	
King		
Morgandale	Camp	ESL
Morse Middle		
North	CLC	
Riverside	N/A	



# Bridge Programs

---

- High School

- Goal: Enhance student confidence, self-esteem, academic preparation, and soft skills
- Location: 22 MPS high school sites
- Program length: 2 days

- Middle School

*All 6–12 and traditional middle schools*

- Provide sixth grade students an opportunity to form realistic expectations of what middle school will be like
- Build a sense of community
- Explore extracurricular activities
- Experience the difference between elementary and middle school

*Scheduled in two-week window prior to first day of student attendance*

# Thank you.

**Presenters:**

Dr. John R. Hill, Director, Department of College and Career Readiness

Natalie Anderson, Manager, Extended Learning Opportunities



Dr. Keith P. Posley, *Superintendent*

