

# Sustaining and Expanding Montessori in MPS

## *The Largest Public Montessori Program in the United States*

March 14, 2019

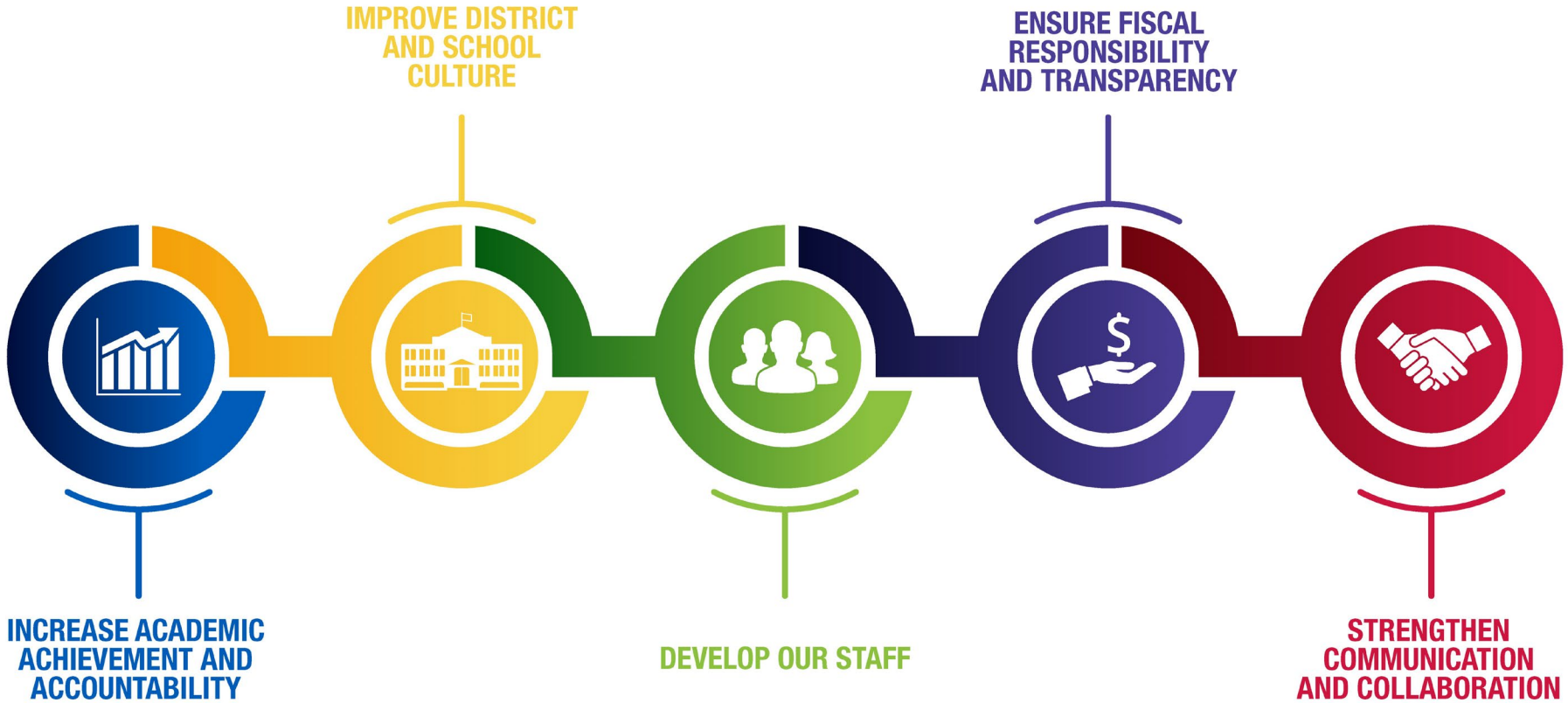


**Presenters:**

Christopher Hauser, Interim Deputy Superintendent  
Joe DiCarlo, Principal, Maryland Avenue Montessori  
Andrea Corona, Principal, MacDowell Montessori  
Sakuri Fears, Montessori Parent

**MILWAUKEE**  
PUBLIC SCHOOLS

Dr. Keith P. Posley, *Superintendent*



# Structural System Recommendations



## Systems of Communication

- Montessori Coordinator
- District Admin. Point Person
- Communication Flow (MAC/Principals/Admin)
- Principal Group Role in Programmatic Items

## Staffing and Leadership

- Recruitment Procedures and Timelines
- Teacher Certification Process
- Montessori Principal PD

## Curriculum/ Program Fidelity

- Adopt Montessori Essential Elements
- Adolescent Teacher Certification
- Align District Initiatives to Montessori
- District Administrator Montessori PD
- Montessori Program Support
- School Based Montessori PD

## Facilities Expansion

- Develop Facilities Expansion Process Over Next Three Years
- Support Expansion/ Development of Current Programs

A photograph of three children in a classroom setting. In the foreground, a young girl with braided hair, wearing a bright yellow shirt, is looking towards the camera with her hand raised, showing three fingers. Behind her, two other children, a boy and a girl, are focused on a wooden Montessori abacus table. The table is filled with colorful beads and rods. The background shows wooden shelves with books and other classroom items.

## Priority of Budgetary Recommendations

Review Annually

---

### FY20 – FY24

- Montessori Coordinator
- Teacher Certification Sponsorships
- Additional Certified Teachers
- Montessori Principal PD
- Montessori Program Support

### FY21

- Adolescent (Middle / HS) Certification

### FY23

- New Program Expansion

# Thank you.

## Presenters:

Joe DiCarlo, Principal, Maryland Avenue Montessori

Andrea Corona, Principal, MacDowell Montessori

Sakuri Fears, Montessori Parent



Dr. Keith P. Posley, *Superintendent*