



**MILWAUKEE  
PUBLIC SCHOOLS**

# Northwest Regional Showcase

March 9, 2023

**Dr. Keith P. Posley**  
*Superintendent*



**MILWAUKEE  
PUBLIC SCHOOLS**

# Northwest Showcase

## *Presenters*

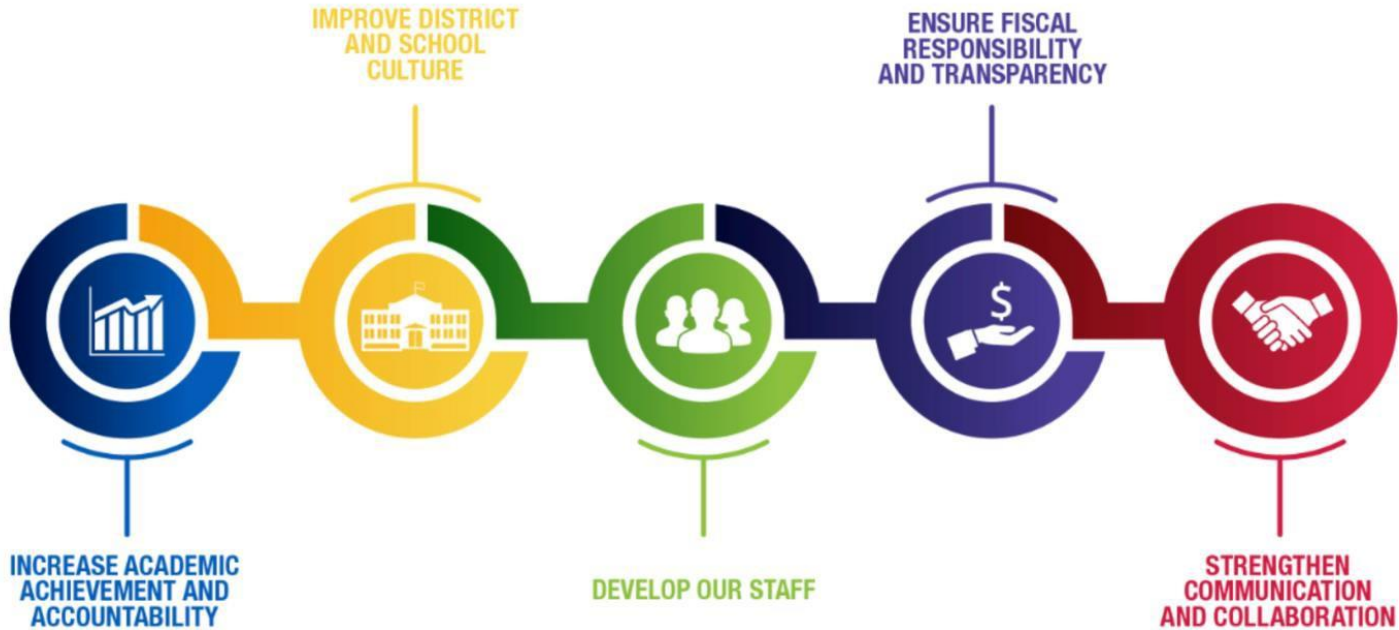
**Jeremiah Holiday, PhD**

*Instructional Leadership Director*

**Sarah Sanders, Principal**

*95<sup>th</sup> Street School*

# Five Priorities for Success



# Northwest Region

- ❑ Scholars: 8,137
- ❑ Schools: 24
- ❑ Staff: 708
- ❑ SwD: 21.8%
- ❑ ELL: 2%
- ❑ Economically Disadvantaged: 78.3



# Demographics

- 0.1 % Native Hawaiian or Other Pacific Islander
- 0.3 % American Indian or Alaskan Native
- 5.5% Asian
- 5.6 % White
- 5.3 % Two or More
- 5.8 % Hispanic/Latino
- 77.4% Black or African American
- 78.3% Economically Disadvantaged



# Northwest Region Schools

K-5 Schools		K-8 Schools	Specialty Schools	Specialty Programs
Barton	Hampton	Congress	Browning	Community School Verizon Innovative Learning School
Bruce	Hawthorne	Thoreau	Carson Academy	Science
Bryant	Kilbourn	Thurston Woods	Craig	Montessori
Eighty First	Kluge		Lancaster	Verizon Innovative Learning School
Emerson	Maple Tree		MKE German Immersion	German Immersion
Engleburg	Ninety-Fifth		MKE Sign Language	Sign Language
Goodrich	Parkview		Stuart	International Baccalaureate <i>Candidate</i>

# 2021-22 State Report Cards

Barton Elementary	AR	Alternate Rating - Satisfactory Progress
Browning Elementary	50.9	Meets Few Expectations
Bruce Elementary	29.8	Fails to Meet Expectations
Bryant Elementary	67	Meets Expectations
Carson Academy	45.3	Fails to Meet Expectations
Congress Elementary	58.8	Meets Expectations
Craig Montessori School	70.2	Exceeds Expectations
Eighty-first Street Elementary	AR	Alternate Rating - Needs Improvement
Emerson Elementary	61.8	Meets Expectations
Engleburg Elementary	72.6	Exceeds Expectations
Goodrich Elementary	30.7	Fails to Meet Expectations
Hampton Elementary	78.5	Exceeds Expectations

Hawthorne Elementary	55.4	Meets Few Expectations
Kilbourn Elementary	73.2	Exceeds Expectations
Kluge Elementary	53.7	Meets Few Expectations
Lancaster Elementary	44.8	Fails to Meet Expectations
Maple Tree Elementary	65	Meets Expectations
Milwaukee German Immersion	75.5	Exceeds Expectations
Milwaukee Sign Language Elementary	62.8	Meets Expectations
Ninety-fifth Street Elementary	51.3	Meets Few Expectations
Parkview Elementary	62.9	Meets Expectations
Stuart Elementary	53.5	Meets Few Expectations
Thoreau Elementary	56	Meets Few Expectations
Thurston Woods Elementary	55.3	Meets Few Expectations

# 95<sup>th</sup> Street Elementary School

## Mission Statement

95<sup>th</sup> Street Elementary School will empower students to be lifelong learners who are caring, accepting, responsible, contributing members of their community. This will be achieved through the development of strong academic programs, a focus on social emotional learning, and use of project based learning activities to strengthen problem solving and critical thinking skills.

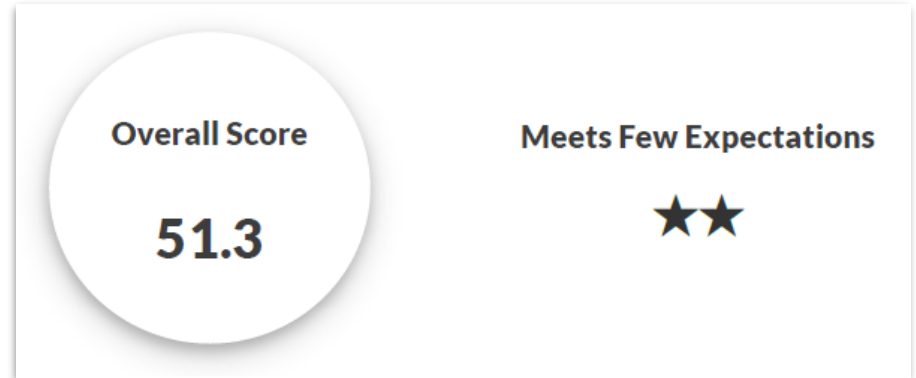




# 95<sup>th</sup> Street School: Data Points

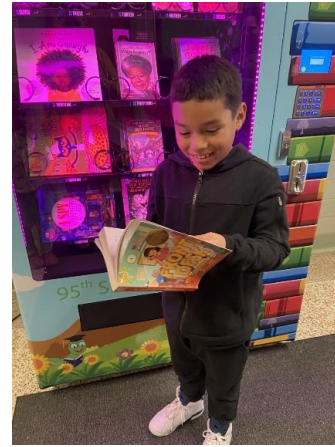
- ❑ Attendance average - 88.7%
- ❑ Suspension Rate - 2.3%
- ❑ STAR participation
  - Reading - 95%
  - Math - 95%
  - Early Literacy - 99%
- ❑ Enrollment - 419

## Report Card Accountability Rating



# Points of Pride

- ❑ Increased Enrollment
- ❑ Participation in ACE program
- ❑ Full time specials
- ❑ 4<sup>th</sup> & 5<sup>th</sup> Grade Student Council
- ❑ Book Vending Machine
- ❑ Successful CICO systems
- ❑ After School Clubs (LEGO, Battle of the Books, Fun & Fit, Game Board, & Music Lessons)
- ❑ Class attendance competitions
- ❑ After school activities
- ❑ Participation in Ropes and Challenges Program
- ❑ Annual Fun Run



# Foundational Skills

## Early Childhood Success

- Hands on Learning
- Frog Street Centers
- Inclusion
- Sensory Paths
- Parental Involvement
- Weekly Family Projects
- Kindergarten Round Up



K4 Classroom Teacher: Christina Kaminski



**MILWAUKEE  
PUBLIC SCHOOLS**

# Thank You!