

Gifted Identification and PSAT Data

February 13, 2020



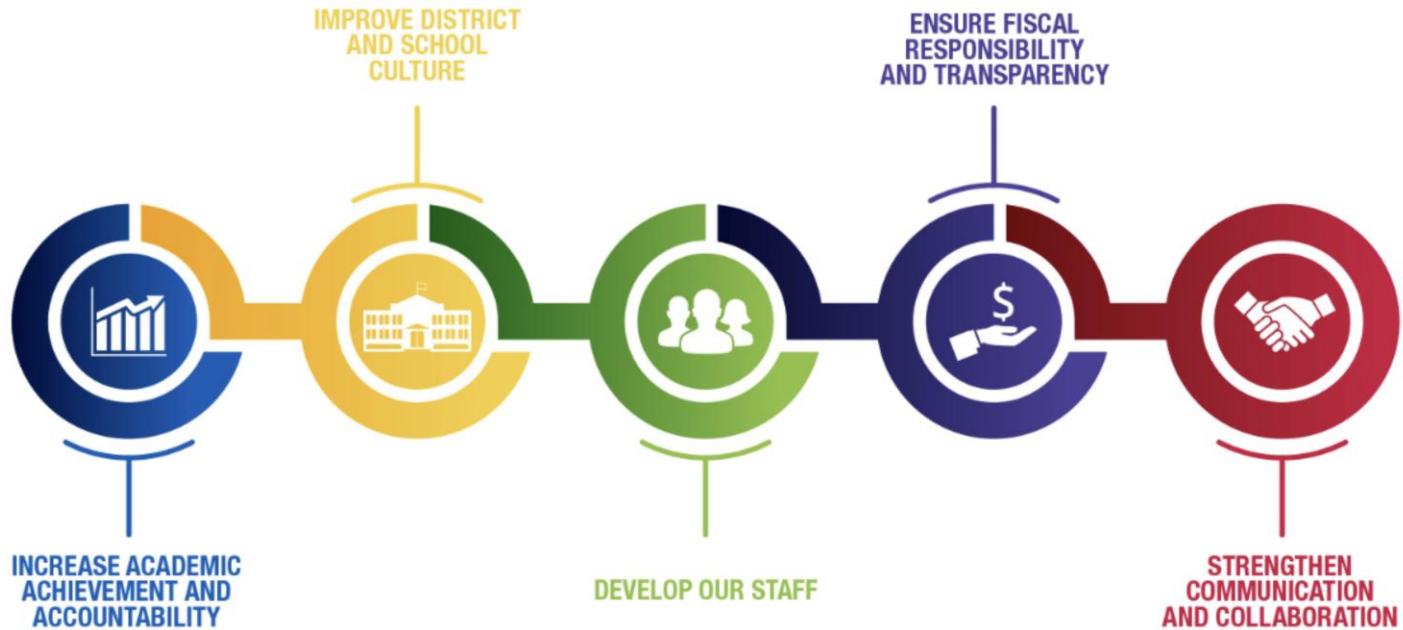
MILWAUKEE
PUBLIC SCHOOLS

Presenters:

Melanie R. Stewart, Ph.D., Director Research, Assessment and Data

Dr. Keith P. Posley, *Superintendent*

Five Priorities for Success



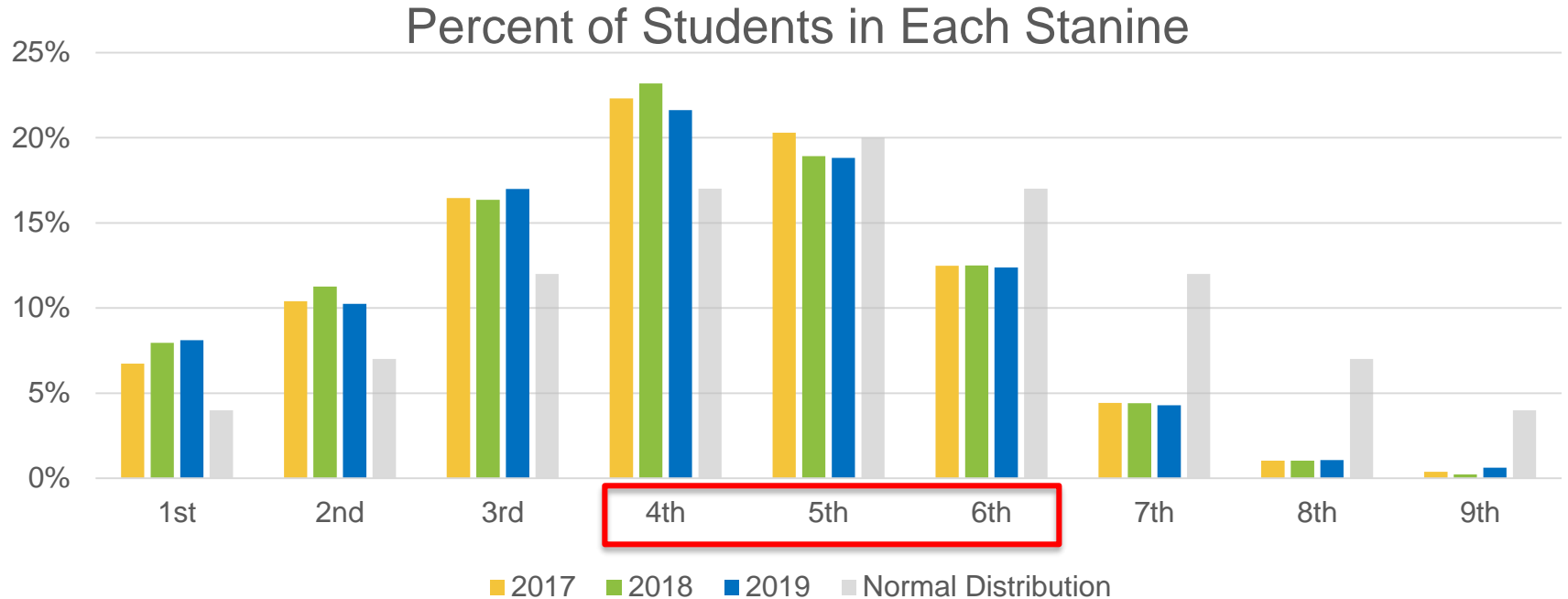
Identification of Gifted & Talented Students

Milwaukee Public Schools uses a variety of assessments to identify high ability and potential in students

- Cognitive Abilities Test (CogAT) in grade 2
- Teacher Observation of Potential in Students (TOPS)
- Star



Cognitive Abilities Test Screener - Composite Score



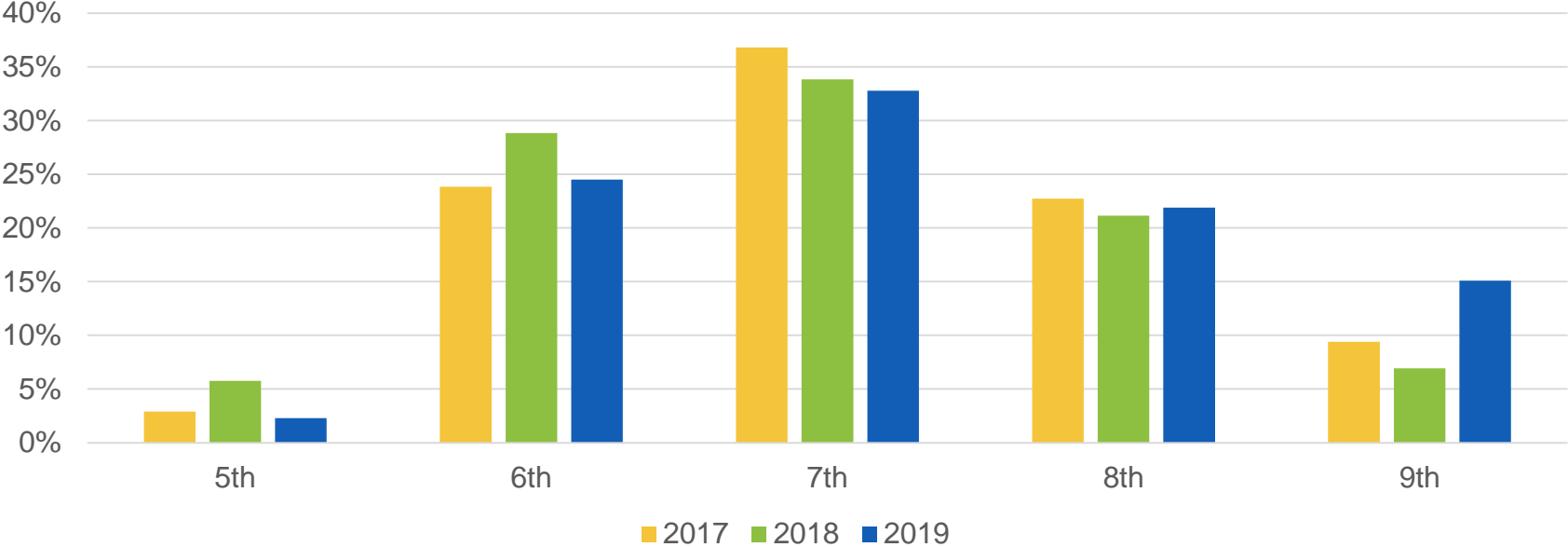
Identified Students from CogAT Screener – Fall 2019

- The CogAT Screener identified 272 grade 2 students that scored in the 7th, 8th or 9th stanine, making them eligible for the Post-Screener.
- Those identified students came from 67 different schools, compared to 73 schools in 2018, and 37 schools in 2017.
- 34% of students taking the Post-Screener (90) scored in the 9th stanine on at least one section of the assessment, compared to 17.5% in 2018.

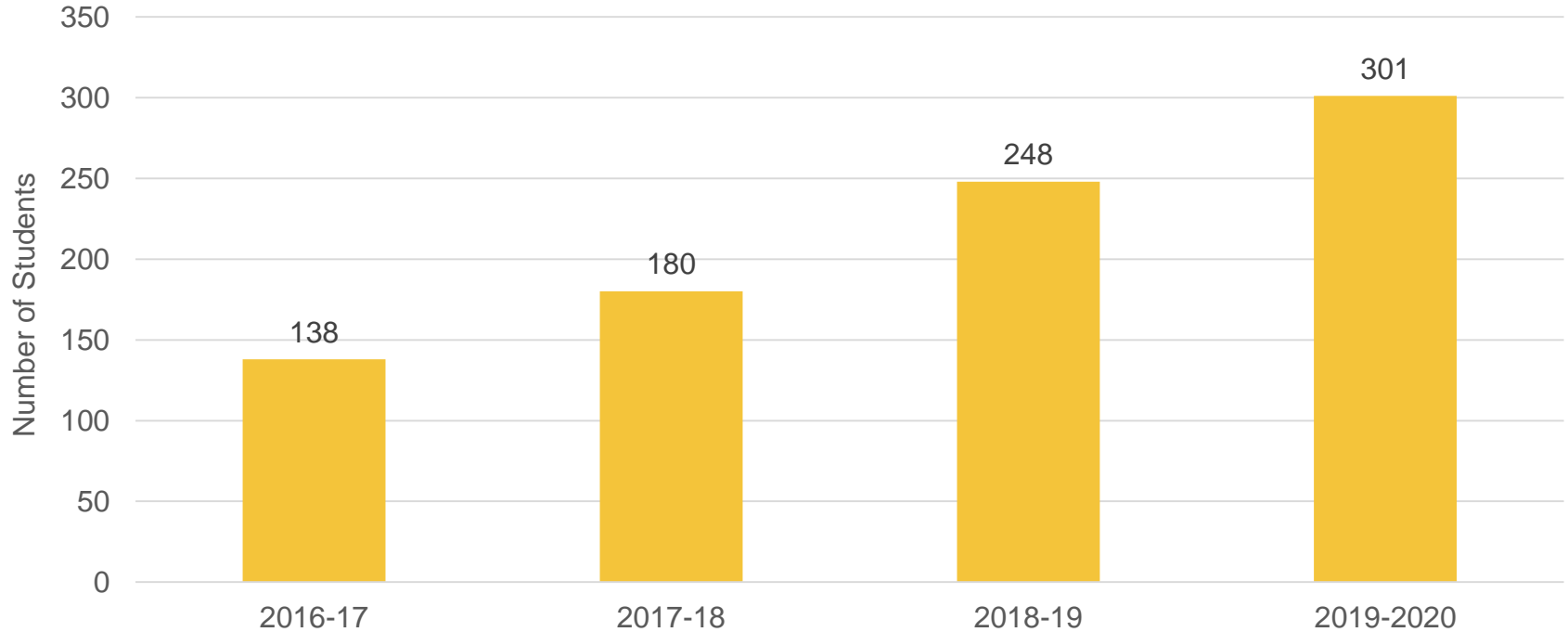


Age Stanine Distribution: Post-Screener Composite Score

Percent of Students in Each Stanine



Identification with TOPS



Star Data

Additional students are identified for enrichment when they score at or above the 75th percentile.

	Fall 2017	Fall 2018	Fall 2019
Early Literacy	1366	1333	1193
Reading	3058	3242	2871
Math	6645	6207	5813

Meeting Student Needs

- Direct services to students
- Family support and services
- Grants to increase opportunities for identification and services

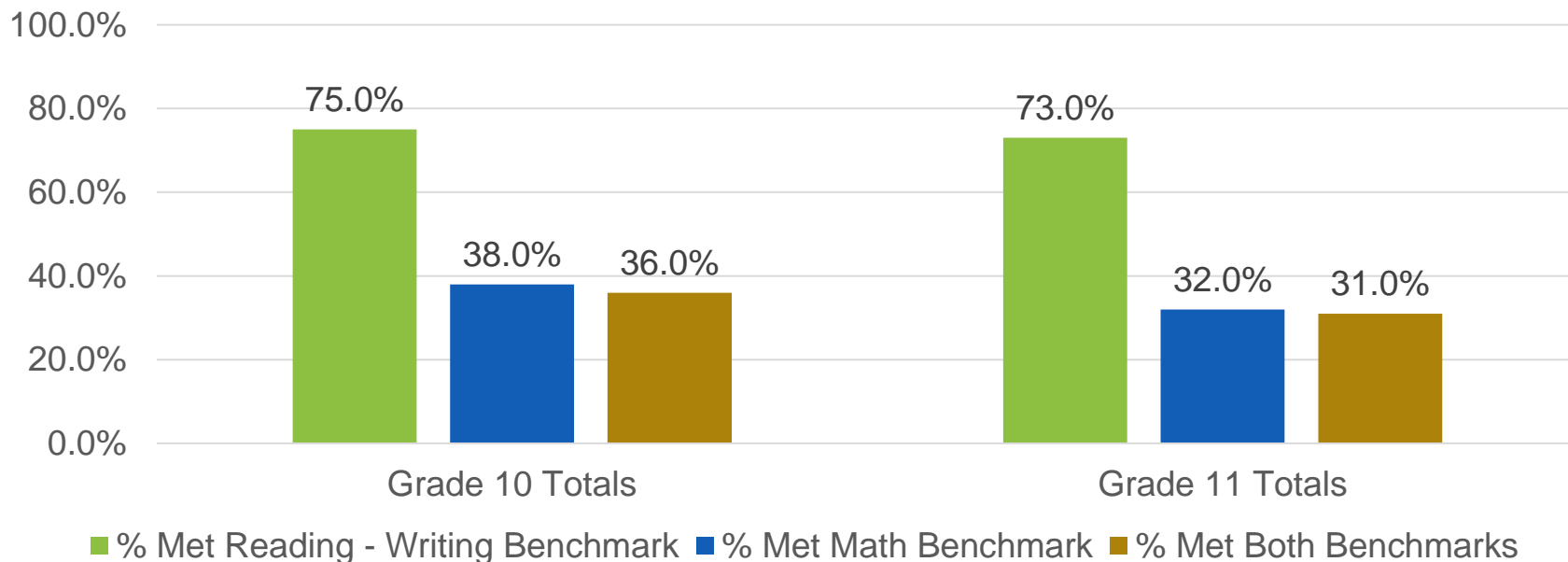
Preliminary SAT/National Merit Scholarship Qualifying Test

The Preliminary SAT/National Merit Scholarship Qualifying Test (PSAT/NMSQT) measures the skills and knowledge that research shows are the most essential for college and career readiness and success.



PSAT/NMSQT Benchmarks Fall 2019

Percentage of Students Meeting Benchmark



PSAT/NMSQT Results

- Links students to the SAT Practice Project
- Identifies students with AP potential
- Provides opportunities for scholarships

Thank you.

Presenters:

Melanie R. Stewart, Ph.D., Research, Assessment and Data



Dr. Keith P. Posley, *Superintendent*