

Family & Community Engagement Report



October 5, 2021

MILWAUKEE
PUBLIC SCHOOLS

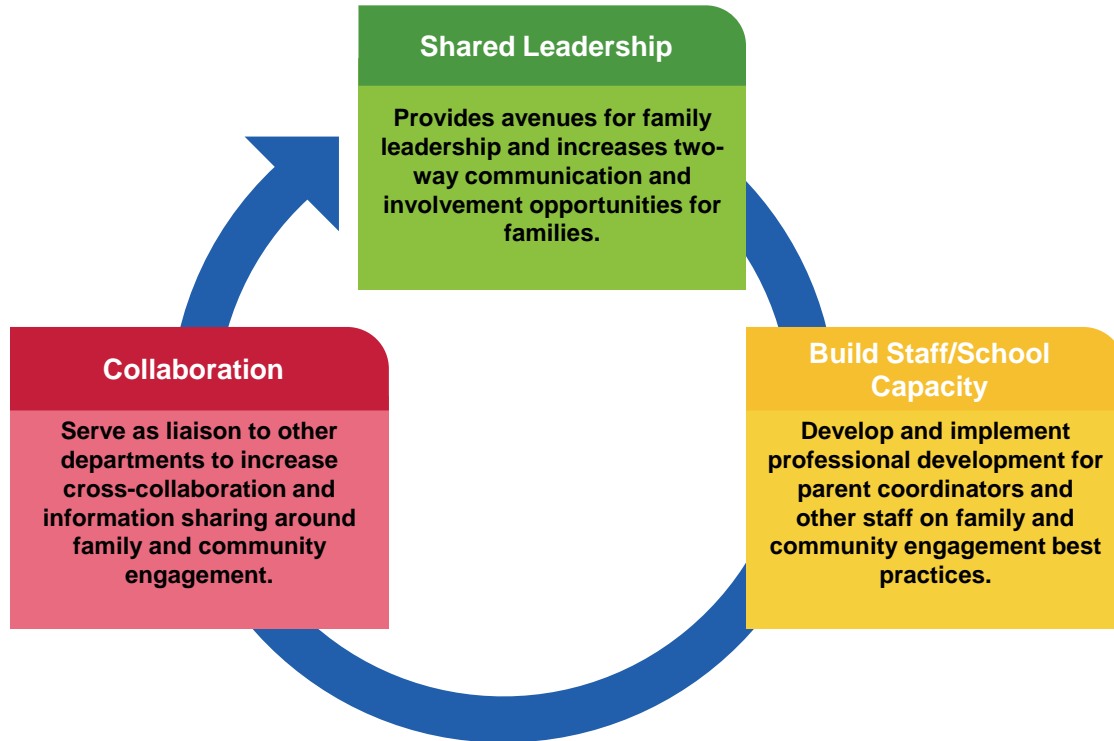
Presenters: Christy Stone, Director, Strategic Partnerships & Customer Service
Darry Hall, Family and Community Engagement Specialist

Dr. Keith Posley, Superintendent

Five Priorities for Success



Family & Community Engagement Principles



Family Engagement



Events

Families



Resource Fair



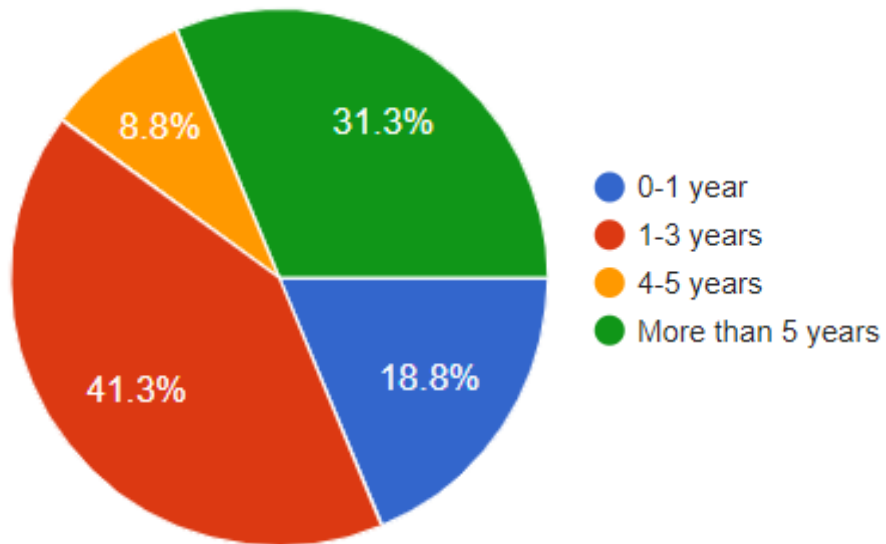
Organizations



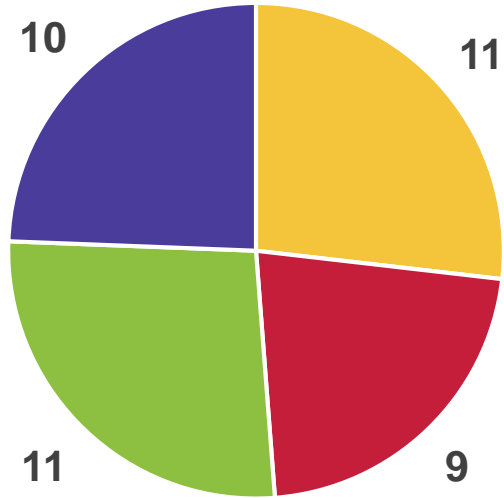
Partnerships



Our Parent Coordinators



New Parent Coordinators



■ Central ■ East ■ Northwest ■ Southwest



District Advisory Council

First Thursday of the Month
October through June

Executive Committee

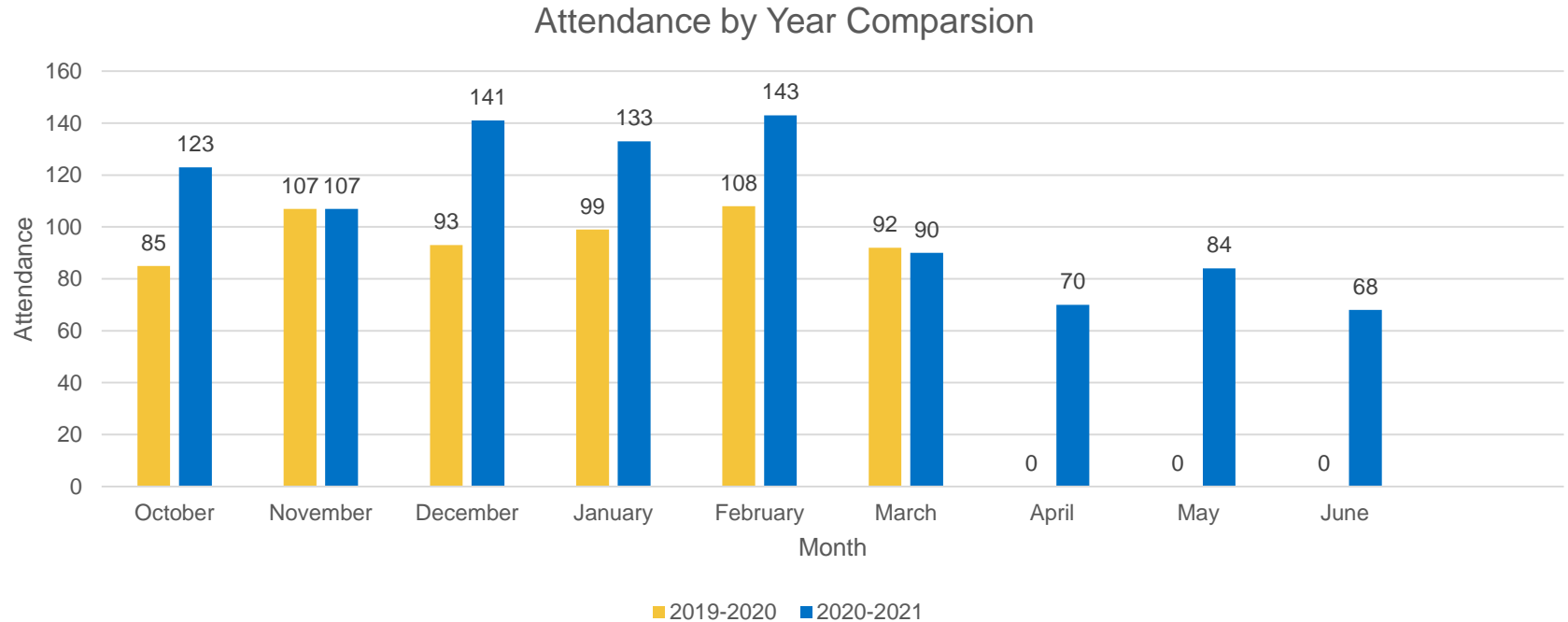
Family Members

October Orientation

November Election

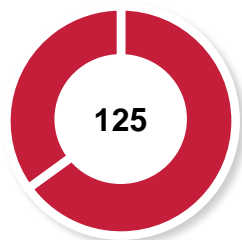


DAC Monthly Attendance



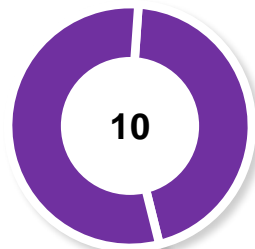
Virtual Foro Latino Family Forum

Monday, September 27, 2021



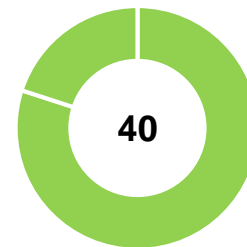
Families

Free family event connects families of students with special education needs to community resources.



Resources & Workshops

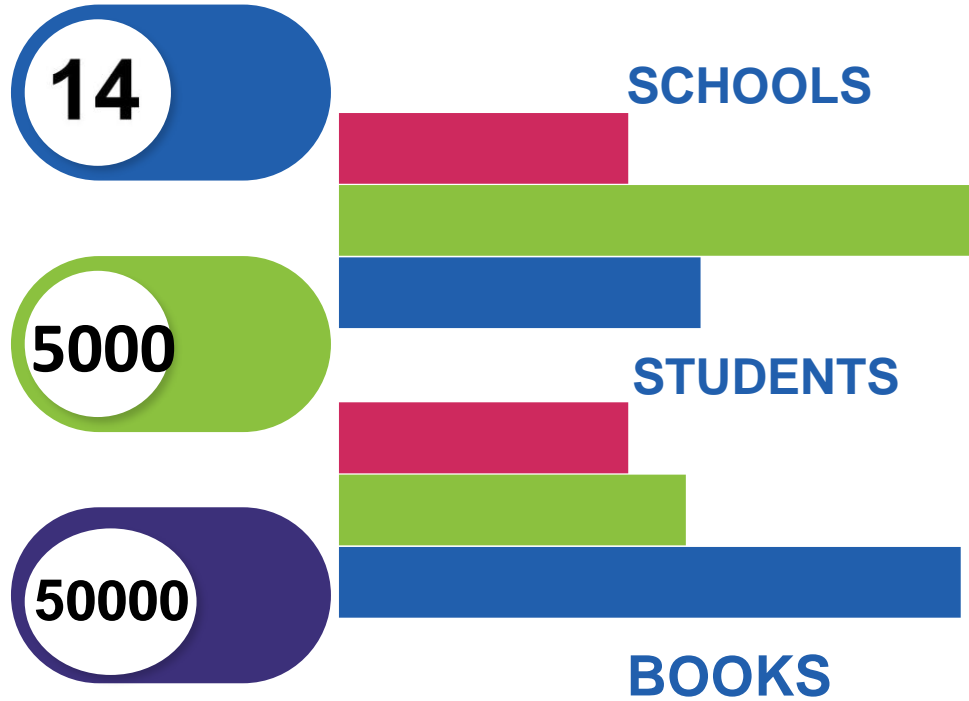
The event features a resource fair and engaging workshops on a range of topics.



Agencies

Providing information on special education and IEPs and referrals to agencies and resources, parent support groups, parent and youth services and more.

Family Engagement



SchoolMessenger

Family Outreach

Newsletters

Text Messages

Phone Calls

569,975 Total Messages



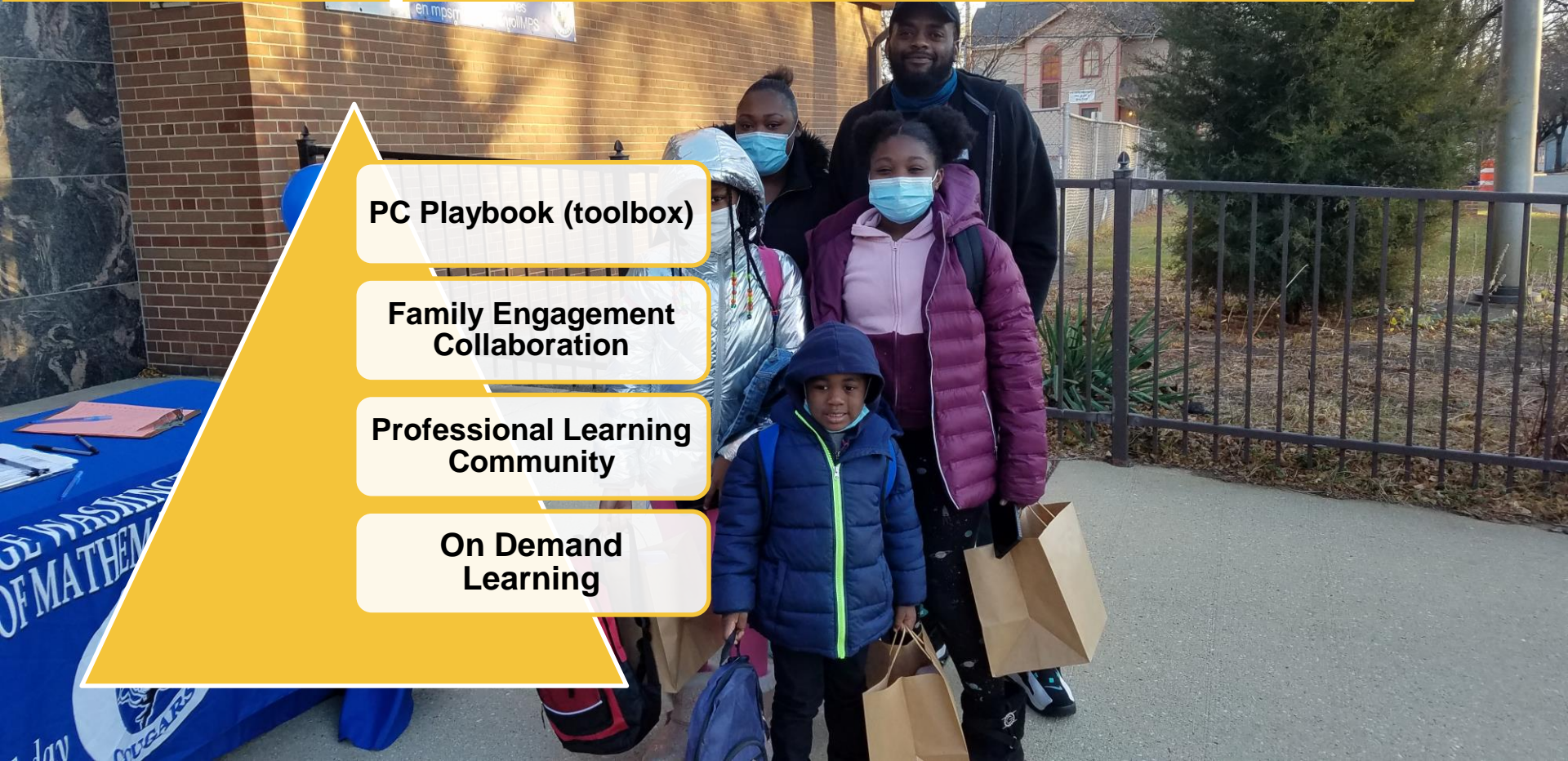
Next Steps

PC Playbook (toolbox)

**Family Engagement
Collaboration**

**Professional Learning
Community**

**On Demand
Learning**



Thank you.



Dr. Keith P. Posley, *Superintendent*

© 2021 Milwaukee Public Schools • 13