

MPS Music Update

August 12, 2021



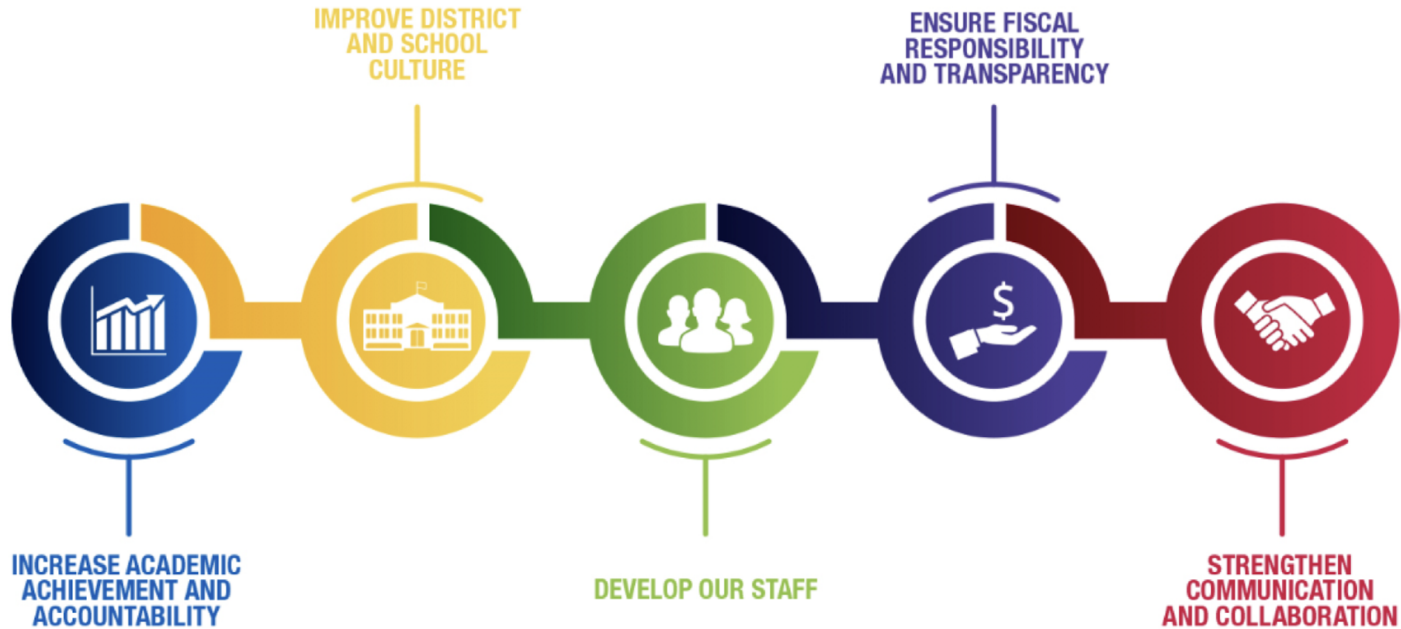
MILWAUKEE
PUBLIC SCHOOLS

Presenters:

Dr. Deb Bowling, Fine Arts Manager
Sharie Garcia, Music Curriculum Specialist

Dr. Keith P. Posley, *Superintendent*

Five Priorities for Success



New Music Programs in 2021-2022

- 25 schools
- 20 new full-time music educators
 - Was 7.8 FTE - increase of 15.2 - total of 23.0 for FY22
- 12,456 students will now have a music teacher
- General music for all students grades K-5
 - Sound Trap in grade 3
 - recorders in grade 4
 - ukuleles in grade 5
- Ensembles for students in grades 6-8
 - band, orchestra, choir
 - modern band, percussion
 - ukulele, guitar





New High School Music Programs for 2021-22

Bradley Tech

- Music Technology and Drum Line

Obama

- General/Vocal Music and Drum Line

Washington

- Orchestra, Band, and Drum Line

Milwaukee School of Languages

- Vocal Music and Music Technology

MacDowell Montessori

- Orchestra, Modern Band, and Drum Line

New Teachers - Expansion Years One and Two

New Teachers	Certified	In a Certification Program
FY20 - 20	14	6
FY21 - 20	20	0

Year 2 - Music Education Expansion - Single Schools

School	Region	Grade Level	FY21 FTE	FY22 FTE Increase	FY22 Total FTE	FY21 Enrollment
Bradley Tech	High School	9-12	0.20	0.80	1.00	1007
Burbank	Central	K4-8	0.20	0.80	1.00	582
Carson	Northwest	K4-8	0.20	0.80	1.00	406
Cooper	East	K4-8	0.20	0.80	1.00	467
Elm	East	K4-5	1.00	1.00	2.00	253
Forest Home	Southwest	K4-5	0.40	0.60	1.00	637
MacDowell Montessori	High School	K3-12	1.00	1.00	2.00	883
MACL	East	K4-8	0.20	0.80	1.00	456
Madison HS	High School	9-12	0.20	0.80	1.00	704
MSOL	High School	6-12	1.00	1.00	2.00	1102
Mitchell	Southwest	K4-8	0.20	0.80	1.00	643
Obama	Northwest	K3-12	0.20	0.80	1.00	639
Story	Central	K4-8	0.20	0.80	1.00	386
Thoreau	Northwest	K4-8	0.20	0.80	1.00	420
Washington HS	High School	9-12	0.20	0.80	1.00	634



Year 2 Music Education Expansion - Paired Schools

School	Region	Grade Level	FY21 FTE	FY22 FTE Increase	FY22 Total FTE	FY21 Enrollment
Browning	East	K4-5	0.20	0.30	0.50	272
Engleburg	Northwest	K4-5	0.20	0.30	0.50	301
Bryant	Northwest	K4-5	0.20	0.20	0.40	208
Goodrich	Northwest	K4-5	0.40	0.20	0.60	327
Clement	East	K4-8	0.20	0.30	0.50	364
Parkview	Northwest	K4-5	0.20	0.30	0.50	383
Franklin	Central	K4-8	0.20	0.30	0.50	362
Westside	Central	K4-5	0.20	0.30	0.50	184
Douglas	Citywide	6-8	0.20	0.30	0.50	584
Green Tree	Citywide	6-12	0.20	0.30	0.50	252



Impact of Referendum Funding

- Seven general music programs received Orff Instruments
- Nine general music programs received hand drums
- Nine general music programs received other general music supplies
- Seven schools received band instruments
- Four schools received string instruments
- Three schools received modern band instruments
- Four schools received keyboard labs
- Three schools received music technology suites
- One school received new instrument lockers
- Eight schools received new drumline equipment
- Eight schools received choral risers
- Eight schools received new conductor's podiums



Curriculum Work Completed

- Created K-5 general music pacing guide
- Created grades 6-8 band, orchestra and modern band pacing guides
- Created Music Technology and Production course and curriculum written for grades 6-9
- Became an AVID/Pro Tools Learning Partner and seven teachers received professional development to begin Music Technology and Production at the high school level



Work Underway

- Planning underway for the 49th Biennial Music Festival to be held May 4 and 5, 2022, at the UWM Panther Area
- Research is ongoing to develop procedures regarding instrument length-of-service and responsible disposal/recycling
- Research is ongoing regarding a district inventory system
- Preliminary research underway regarding high school band, orchestra and vocal music curriculum
- Year-three music expansion schools under consideration
- Networking with state and national music and fine arts specialists



For the Fall

- New Educator's Institute
- Ambitious Instruction through music
- Professional development for district music platforms
 - Quaver
 - Sound Trap
 - Smart Music
 - Music First
- On-board and support 40+ new teachers who will be in their classrooms for the first time
- Support 16 traveling music teachers working in about 75 schools

Next Steps

- Collaborate to systematize music programming in K-8 Schools
- Expand Saturday lesson sites
- Expand the traveling music teacher program
- Upgrade our performances spaces - 21st Century
- Build a network of college music education faculty
- Explore culturally relevant music opportunities such as Mariachi
- Expand our choral and string programs
- Work to offer at least two music options in high school
- Work to rebuild feeder systems
- Align and build equity by offering music, art, dance, theatre and creative writing at the arts elementary, middle and high schools



Thank you.



Dr. Keith P. Posley, *Superintendent*

© 2021 Milwaukee Public Schools • 13