



**MILWAUKEE  
PUBLIC SCHOOLS**

# Central Region Showcase

**October 10, 2024**

**Eduardo Galván  
Interim Superintendent**



**MILWAUKEE**  
PUBLIC SCHOOLS

# Central Region Showcase

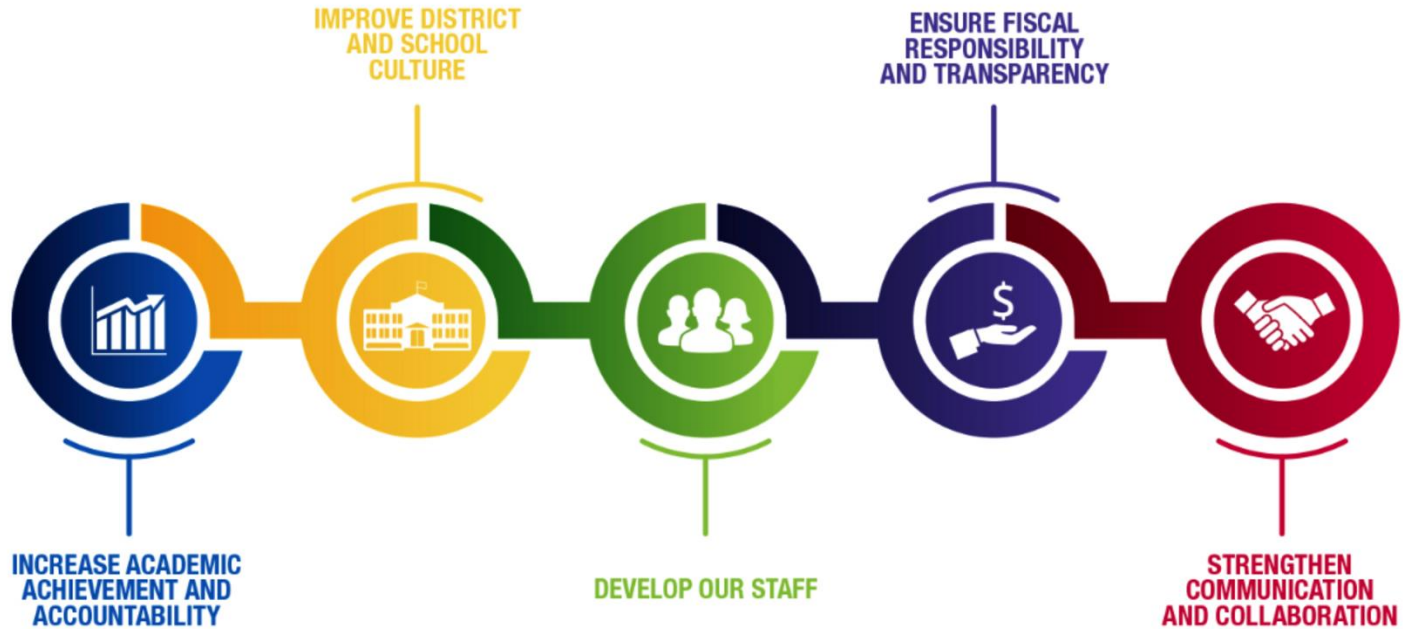
## *Presenters*

Dr. Carletta Noland  
*Regional Superintendent*

Dr. Jeremiah Holiday  
*Instructional Leadership Director*

Mr. Casey McEilly  
*Principal*  
53<sup>rd</sup> Street School

# Five Priorities for Success



# *Strategic Plan Driving Our Mission*



## **Strategic Plan Driving Our Mission:**

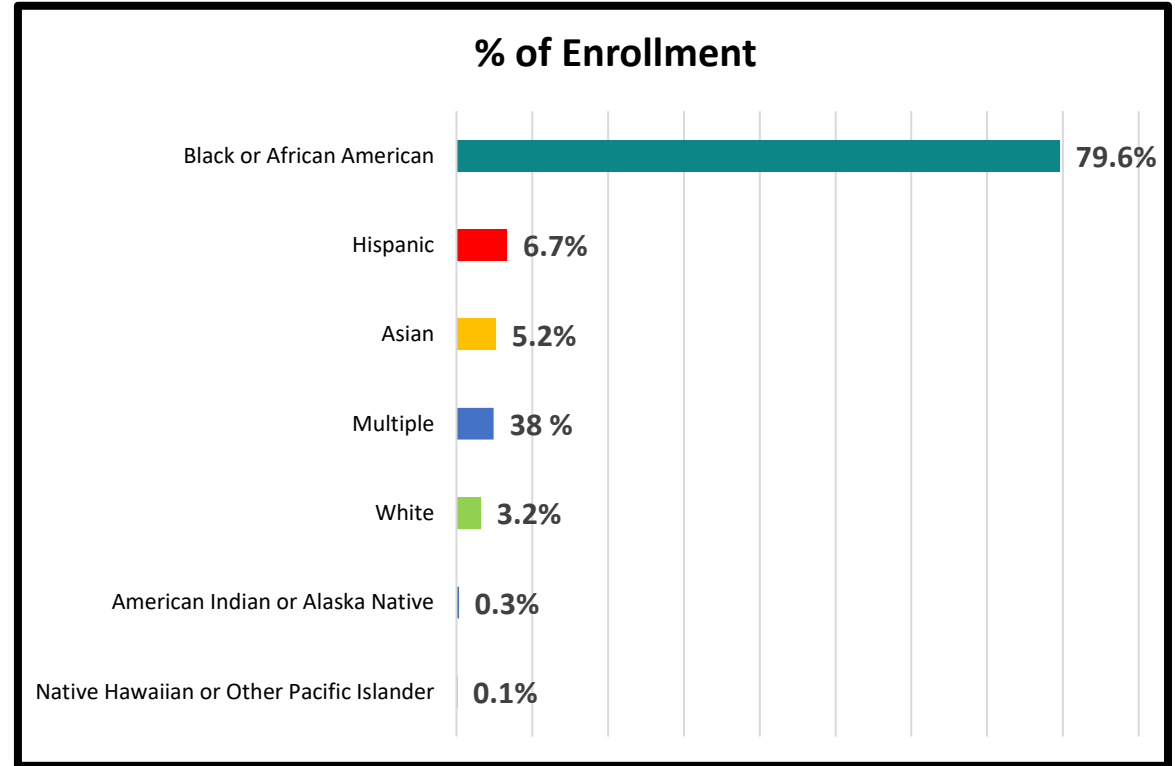
MPS is a diverse district that welcomes all students and prepares them for success in higher education, post-education opportunities, work, and citizenship.

# Central Region Schools

K-5 Schools	K-8 Schools	K-8 Academic Specialty Schools	K-5 Community Schools
<ul style="list-style-type: none"><li>• Samuel Clemens</li><li>• Gwen T. Jackson</li><li>• Neeskara Elementary</li><li>• Keefe Avenue</li><li>• Brown Street Academy</li><li>• Siefert Elementary</li></ul>	<ul style="list-style-type: none"><li>• Mary McLeod Bethune</li><li>• Luther Burbank</li><li>• Clarke Street</li><li>• Fifty-Third Street</li><li>• Benjamin Franklin</li><li>• Hi-Mount School</li><li>• Story Elementary</li><li>• Robert M. LaFollette</li><li>• Ralph H. Metcalfe</li><li>• Starms Learning Centers</li><li>• Sherman Multicultural Arts</li><li>• Thurston Woods</li></ul>	<ul style="list-style-type: none"><li>• Lloyd Barbee Montessori</li><li>• Hawley Environmental</li><li>• Grant Gordon Early Childhood</li><li>• Starms EC Early Childhood</li><li>• Milwaukee French Immersion</li><li>• Marvin Pratt Primary Years IB</li><li>• Andrew Douglas African-American Immersion Middle School</li></ul>	<ul style="list-style-type: none"><li>• Auer Avenue</li><li>• Hopkins- Lloyd</li><li>• Westside Academy</li></ul>

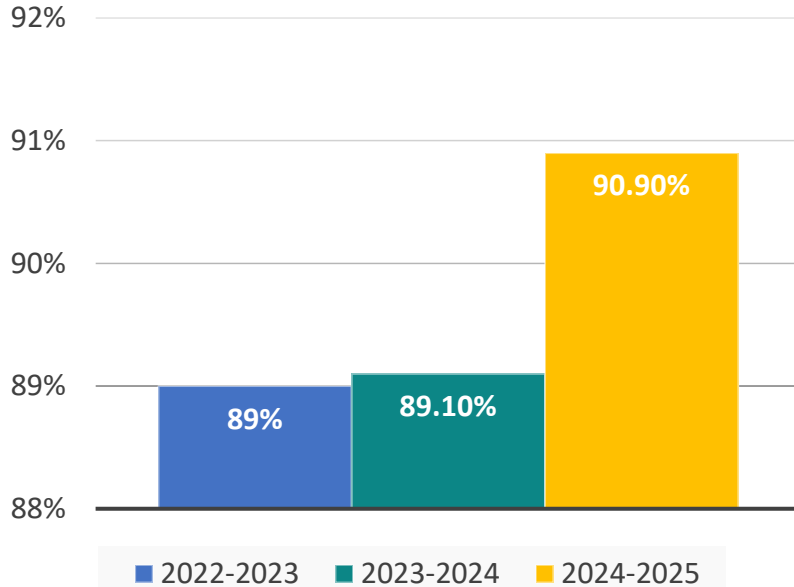
# Central Region Demographics

- 7,401 Students
- 28 Schools
- 6.3% English Language Learners
- 21.9% Students with Disabilities
- 83.9% Economically Disadvantaged

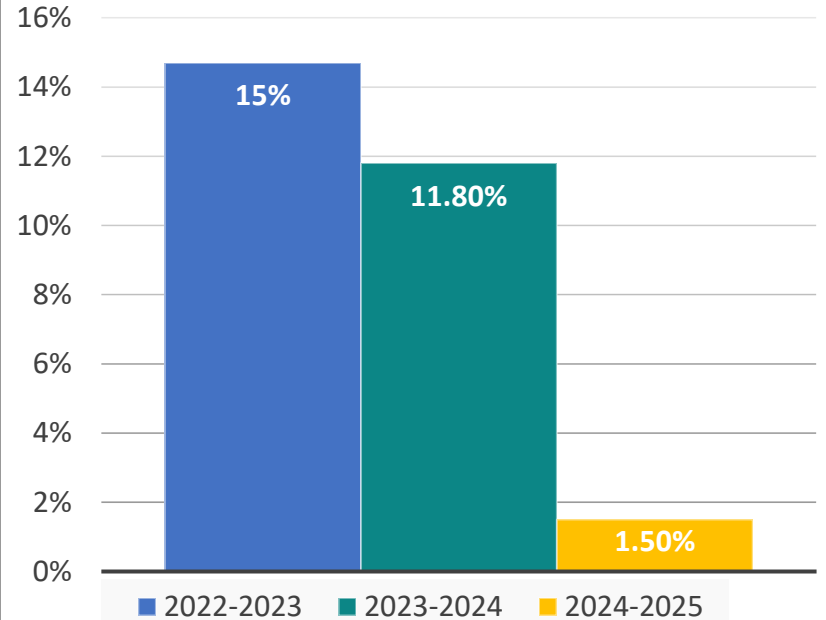


# Central Region Climate Data

## Attendance LYTD vs. YTD



## Suspension Rate LYTD vs. YTD



# Central Region Literacy Improvement Plan

## Cycle 1

- Instructional Minutes
- Literacy Block Components
- Whole Group Instruction

## Cycle 2

- Setting up for Small Group Instruction
- Differentiated Small Groups

## Cycle 3

- Rigor within Whole and/or Small Group Instruction
- Progress Monitoring Effectiveness of Whole and/or Small Group



# 53<sup>rd</sup> Street School

## Demographics

311 Scholars

Students with Disabilities

- 21.5% 67

Economically Disadvantaged

- 85.5% 266 Students

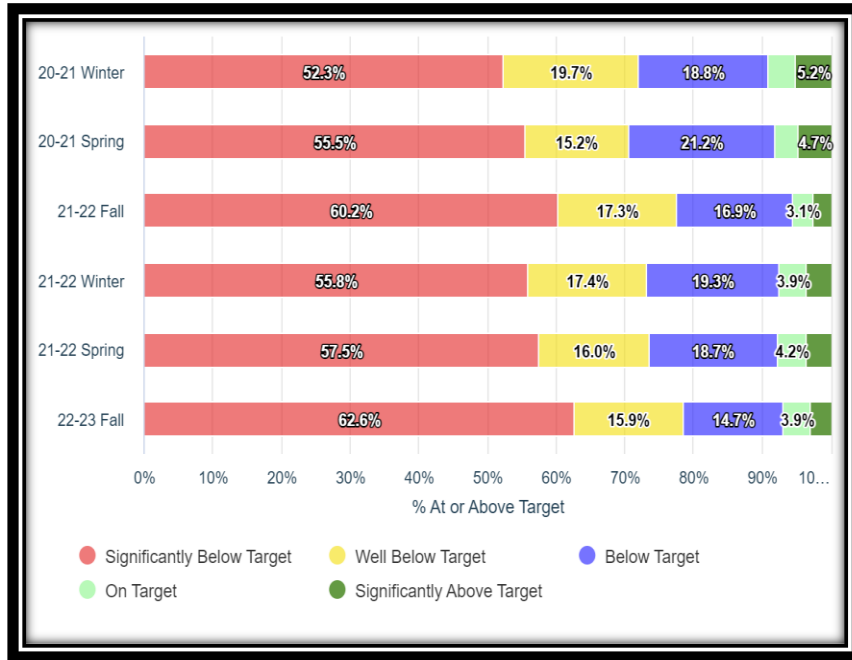
Student Race

- 84.6 % Black or African American
- 9.3% Hispanic
- 3.9% Multiple
- 1.3% White
- .6% Asian
- .3% Native Amer/Alaskan Native

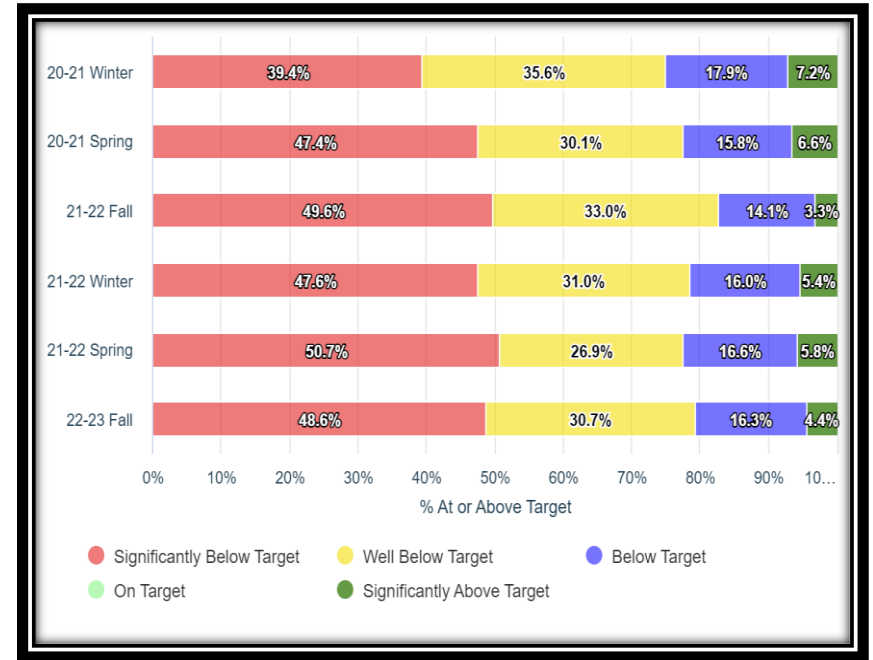


# STAR Historical Screening Overview

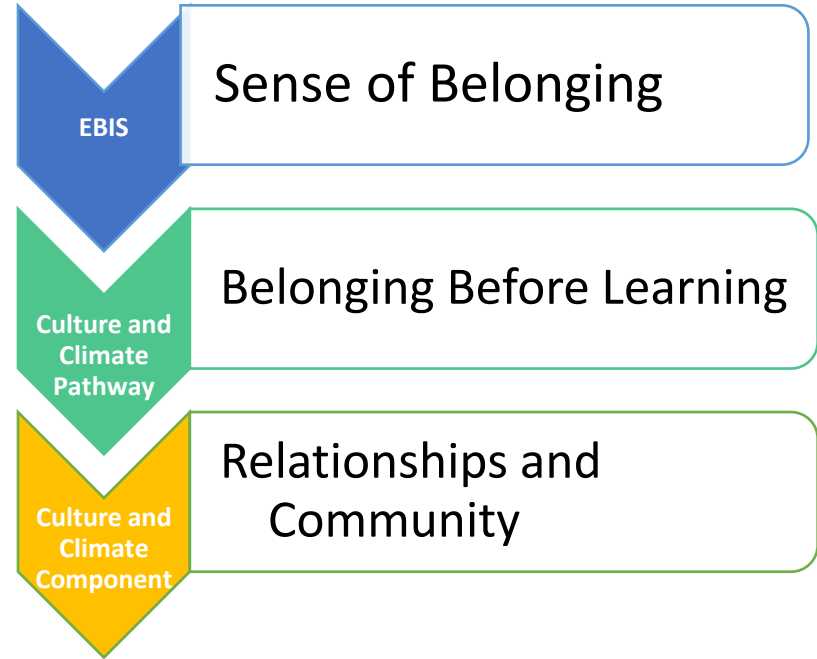
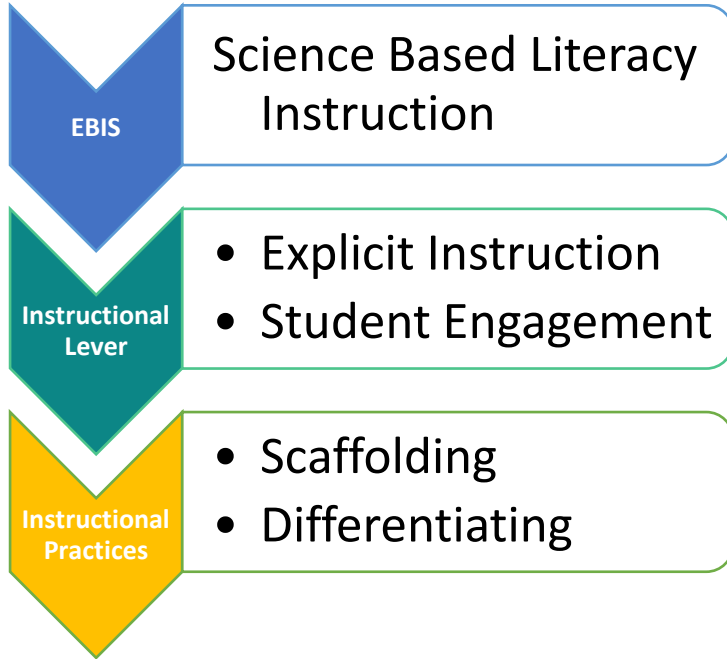
## STAR Reading



## STAR Mathematics



# School Improvement Plan- Instruction



# Students Belong Here



- All teachers trained in relationship building
- 18 mindful student mentors
- 42 families receiving SEL books

RISE Grant

## PBIS Interventions

- Two staff trained in ropes and “wrap and map”
- ~80 students in groups
- Over 120 students with interventions

- Attendance Increased: 77.1 % 22-23 to 82.0% for 23-24
- Suspension Decreased: 26.9% 22-23 to 13.6% 23-24
- Behavior Referrals Decreased: 663 22-23 to 308 23-24

Attendance and Behavior Data



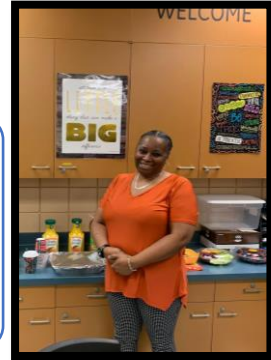
# Family and Community Engagement



Girls on the Run

Boys and Girls Club

In-school Family Events



Tiger Robotics

SCPMH

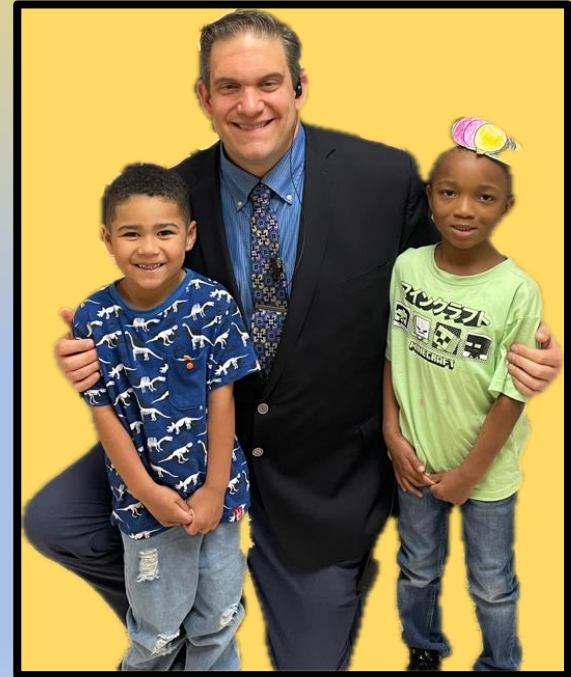
Playground Redevelopment



# Looking Ahead

## We Will:

- Increase academic achievement in ELA and Mathematics
- Increase attendance
- Improve school climate
- Strengthen family and community engagement
- Engage school community in our Playground Redevelopment





**MILWAUKEE  
PUBLIC SCHOOLS**

# Thank You!