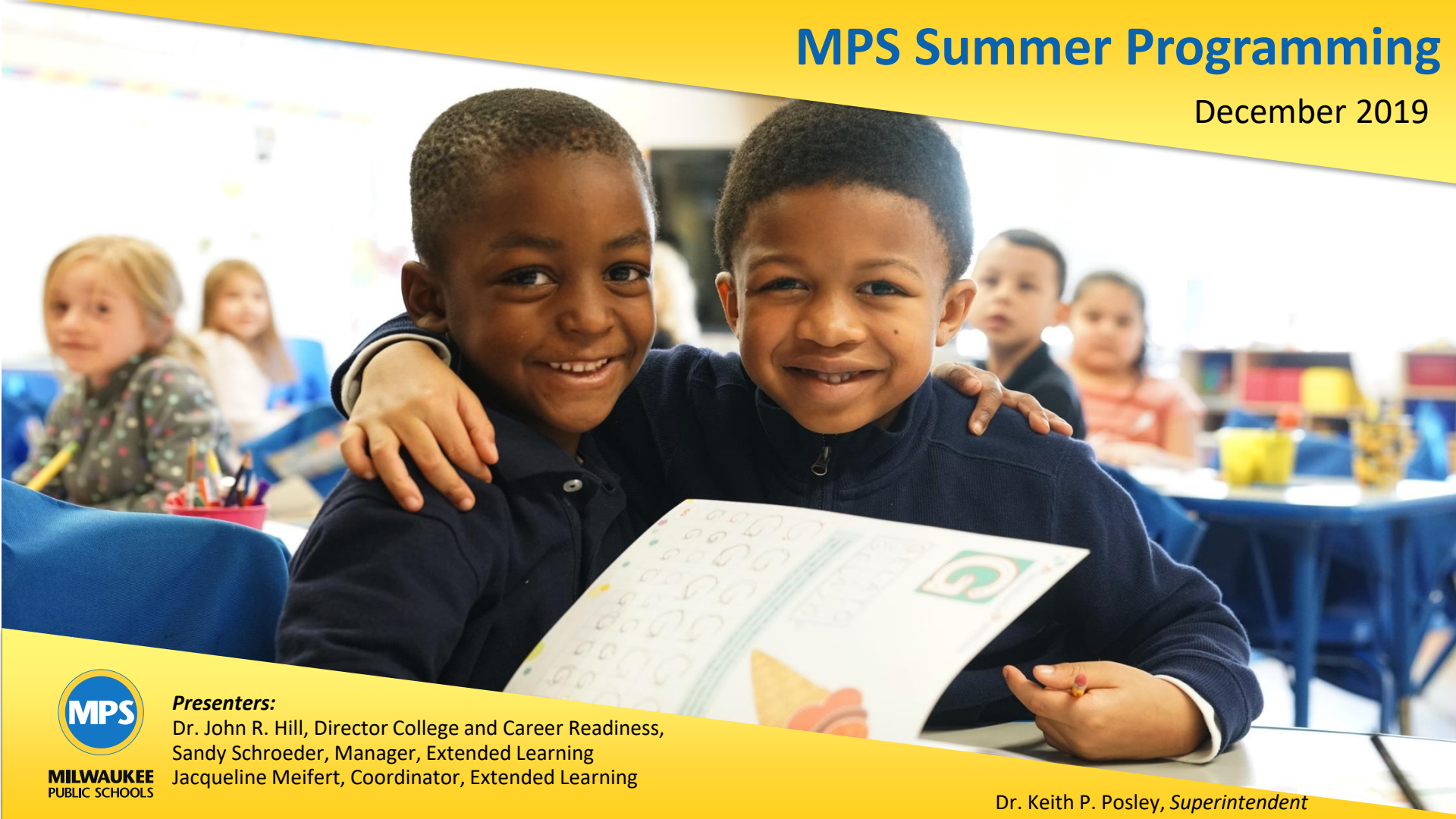


MPS Summer Programming

December 2019



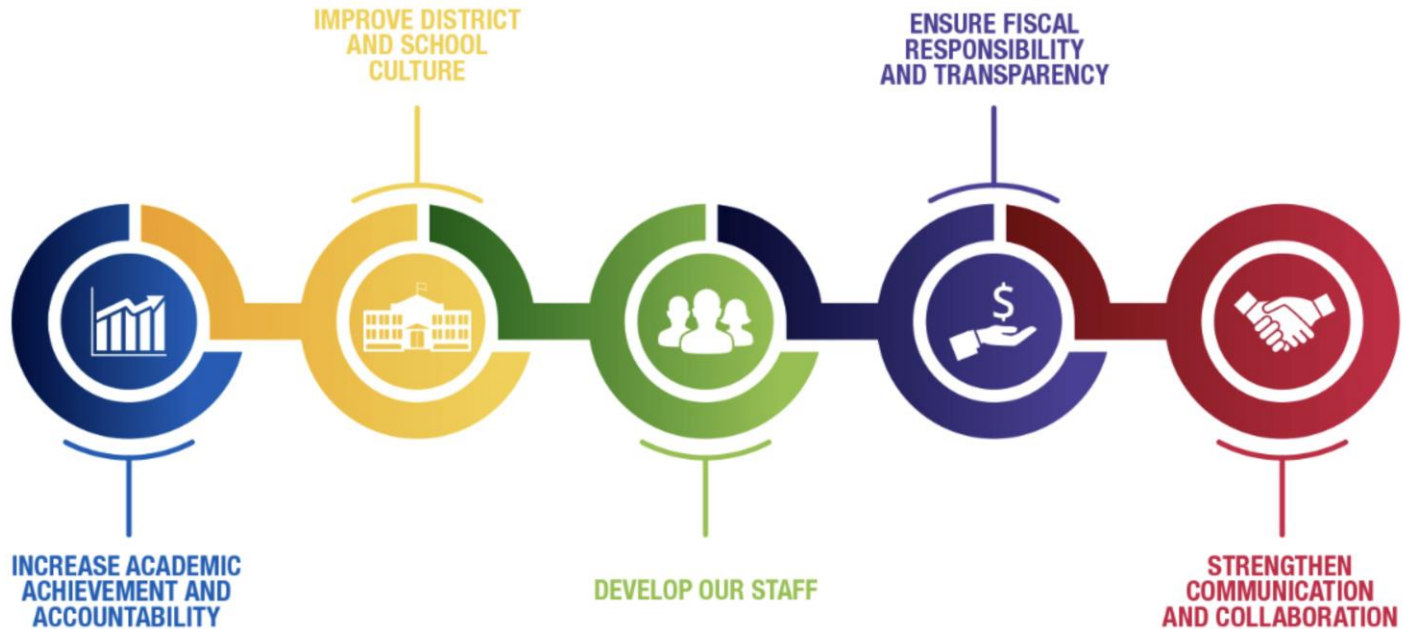
MILWAUKEE
PUBLIC SCHOOLS

Presenters:

Dr. John R. Hill, Director College and Career Readiness,
Sandy Schroeder, Manager, Extended Learning
Jacqueline Meifert, Coordinator, Extended Learning

Dr. Keith P. Posley, *Superintendent*

5 Priorities for Success



Summer Academy

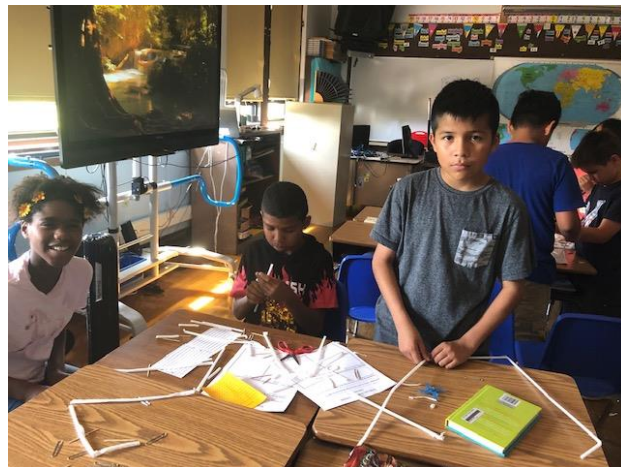
- Milwaukee Public Schools recognizes that students need a variety of comprehensive supports to achieve success in school and in life
- Extended learning opportunities such as summer school are critical strategies to leverage student success
- Programs include academics, community adventures, social-emotional learning, enrichment camps the Arts, STEM/STEAM and nature programming



2019 Summer Data

Attendance

- Summer Academy 2019:
 - 1 elementary and 3 high school sites in June
 - 18 elementary and 3 high school sites in July
- 5118 students attended all programs
- 2244 students attended Freshman Bridge



High School

- 2,600 courses completed
- 1033 students attended both June and July sessions

2019 Summer Data Cont.

Extended School Year (ESY) & School-to-Work Transition Program

- 122 participants June Academy
- 313 participants July Academy

Summer Adventures

- 2,374* participants in arts-integrated programs with community partners
- 6,272* participants in on-site and off-site enrichment programming

*Not unique students



Summer Curriculum



- High school focuses on credit recovery and acceleration with opportunities for, service-learning and internships
- Elementary curriculum emphasizes math and literacy through the content area of science
 - Increased emphasis on project-based learning and art integration
- Summer enrichment camps
 - Collaborate with community partners to provide a variety of enrichment camps

High School Programming

June Session: June 1-26, 2020

July Session: July 6-31, 2020

- Monday through Friday from 8:30 a.m. – 12:30 p.m.
- High School summer school includes:
 - Face-to-Face Instruction (Bilingual and English Language Learner)
 - Credit Recovery
 - Online Learning
 - Course Completion
 - Credit Recovery and Acceleration
 - GED Option #2 & Competency Based
 - Career-Based Learning Experiences
 - City bus M-Cards provided



Middle School Programming

June Academy: June 1-16, 2020

July Academy: July 6-31, 2020

- Monday through Friday from 8:30 a.m. - 12:30 p.m.
- Academic and social emotional programming provided
- Bilingual and English Language Learner options
- Arts integrated programs



Extended School Year Programming

June Academy: June 1-26, 2020

July Academy: July 6-31, 2020

- Elementary and Middle School
 - Monday through Friday from 7:30 a.m. - 11:30 a.m.
 - Wraparound - Club Rec
- High School
 - Monday through Friday from 8:30 a.m. - 12:30 p.m.
 - Wraparound-Club Rec
 - All ESY sites serve students with disabilities and regular education students



Elementary Programming



July Session: **July 6-31, 2020**

- 18 Neighborhood sites
- July elementary programs run Monday through Friday from 7:30 a.m. to 11:30 a.m.
- Breakfast and lunch are provided
- Wraparound before and after school services are provided
- Bilingual and English Language Learner programs

Wrap-Around Services

Summer sites provide wrap-around services which include one of the following:

- Club Rec (ESY)
- Child Care Camps
- Community Learning Centers
- Boys & Girls' Club
- Safe Place

Early drop-off and late pick-up at elementary sites Monday through Friday.



Adventures and Enrichment Activities

Complements classroom instruction

Innovative hands-on experiences while exploring STEAM

- Wisconsin's unique heritage
- Natural environment
- Archaeology, paleontology, environmental science and Life cycles
- Farm Life
- Arts integrated activities
- Coding
- Robotics
- Gardening/Culinary



Bridge Programs

- High School

- Goal: Enhance student confidence, self-esteem, academic preparation and soft-skills
- Location: 22 MPS high school sites
- Program Length: 2 days
- August 5-6, 2020

- Middle School

All 6-12 & Traditional Middle Schools

- Provide sixth grade students an opportunity to form realistic expectations of what middle school will be like
- Build a sense of community
- Explore extra-curricular activities
- Experience the difference between elementary and middle school

Scheduled in two-week window prior to first day of student attendance.



Thank you.

Presenters:

Dr. John R. Hill, Director College and Career Readiness

Sandy Schroeder, Manager, Extended Learning

Jacqueline Meifert, Coordinator, Extended Learning



Dr. Keith P. Posley, *Superintendent*