



MILWAUKEE
PUBLIC SCHOOLS

Music Education Update

May 15, 2025

Brenda Cassellius, Ed.D.
Superintendent



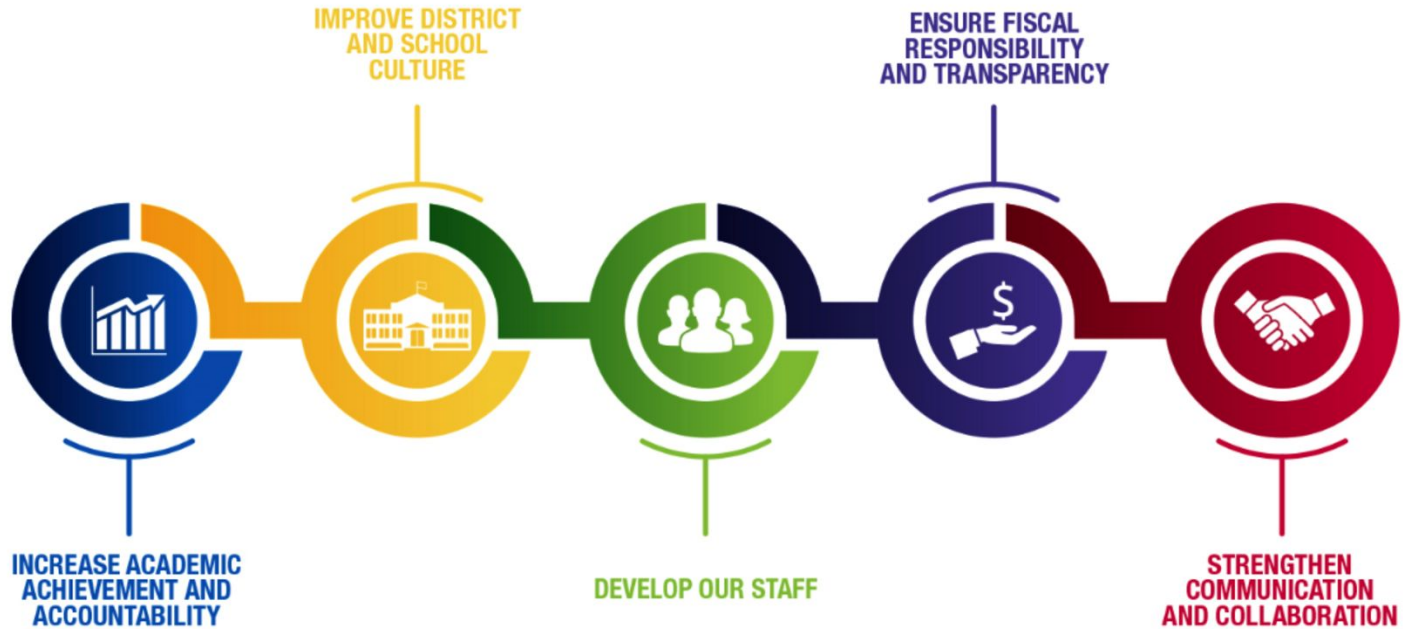
MILWAUKEE
PUBLIC SCHOOLS

Music Education Update

Presenter

Sharie Garcia
Music Curriculum Specialist

Five Priorities for Success



Strategic Plan Driving Our Mission



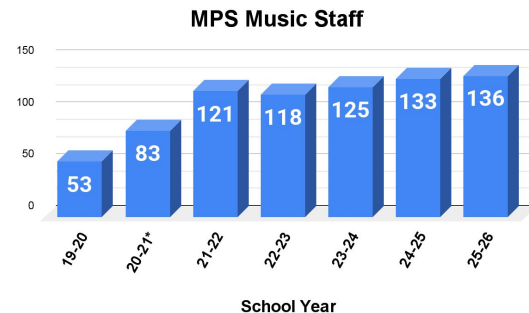
Strategic Plan Driving Our Mission:

MPS is a diverse district that welcomes all students and prepares them for success in higher education, post-education opportunities, work, and citizenship.

Music School Staffing: 2024–25

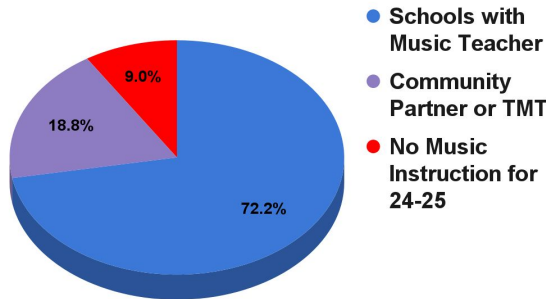
Total of 133 music staff:

- 105 classroom teachers serving 95 schools
- 24 traveling music teachers serving 54 schools
- 2 music teacher leaders coaching 11 new teachers
- 2 instrument specialists serving all schools



Music vacancies as of 5/15/25:

- 6 full-time
- 35 part-time



District Music Team and Student Opportunities

Two music teacher leaders:

- Supported 11 new teachers with weekly coaching
- Visited 40+ veteran teachers to check in
- Conducted 227 district walk-throughs

Two instrument specialists:

- Fulfilled 534 requests for instruments, equipment, and supplies
- Fulfilled 296 book orders
- Fulfilled 135 music library requests
- Assembled new music stands, chairs, risers, and racks to hold them
- Maintained district inventory of over 7,000 instruments for distribution, cleaning, and repair

- **Battle of the Drum Lines**

December 13, 2025

@ Rufus King

- **WSMA Solo and Ensemble Contest**

February 28, 2026

@ MHSA

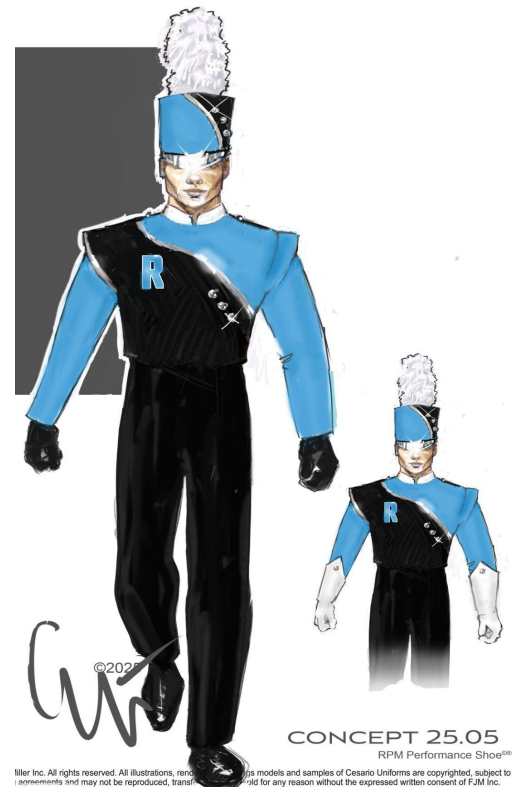
- **51st MPS Biennial Music Festival**

May 6 and 7, 2026

@ UWM Panther Arena

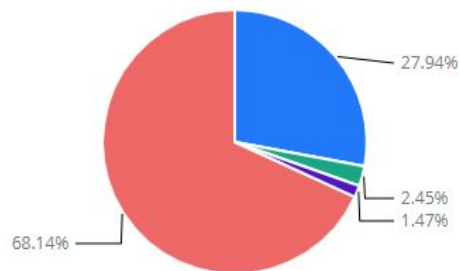
2025–26: Future Music Highlights

- Traveling music will increase from 282 hours in 2024–25 to 425 hours in 2025–26.
- Reagan will be starting a marching band.
- Pulaski is adding choir and music technology (they already have band and piano).
- South Division added a second music position.
- Rufus King High School is building a shared visual art/music technology lab.
- Milwaukee High School of the Arts is building an upgraded piano lab and jazz room.
- Saturday lessons will now offer all-city indoor percussion.



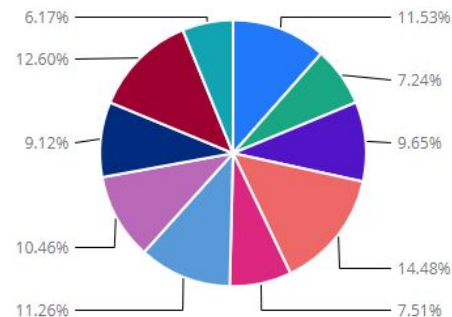
Music and Ambitious Instruction

Align instruction to grade-level standards:



- Developing Some of the instruction is aligned to grade-level standards
- No Evidence/Needs Support Instruction observed is not aligned to grade-level standards
- Exceed Expectations Instruction is consistently aligned to grade-level standards
- Meets Expectations Instruction is consistently aligned to grade-level standards

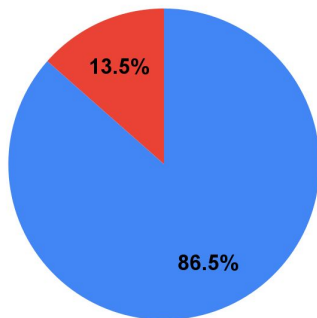
What type of differentiation was observed:



- Content - Student Interest
- Content - Student Learning Style
- Content - Student Readiness
- None observed
- Process - Activities for All Learning Styles
- Process - Flexible Grouping
- Process - Variety of Materials
- Product - Ongoing Formative Assessment
- Product - Student Choice
- Product - Students Demonstrate Mastery

Feeder Pattern Study: Aligned

Milwaukee School of Languages Middle School

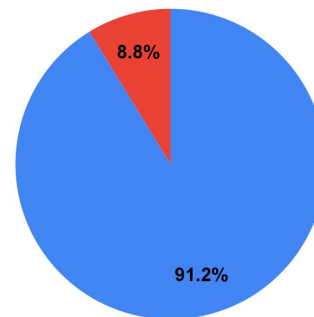


● Language Immersion School ● Neighborhood School

- 86.5% language immersion schools
- 13.5% neighborhood schools
- General music is offered in each K–grade 5 feeder school:
 - Robust programs with experienced, long-term teachers

MSOL High School Feeder Schools

40 different schools send students to MSOL.



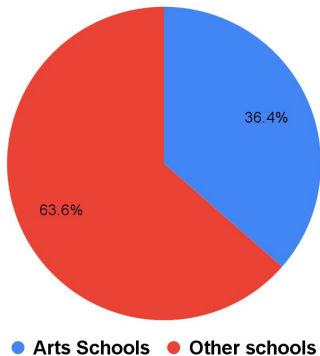
● MSOL ● Other

- The Milwaukee School of Languages high school feeds itself:
 - Band, orchestra, choir, and music technology are offered in grades 6–12

Needs Alignment: Arts Schools Proposal

Milwaukee HS of the Arts Feeder Schools

80 different schools send students to Arts.



- 36.4% arts schools
- 63.6% other schools
- Missing art areas in feeder schools, fewer established music programs

Currently, no arts feeder school offers a complete arts program.

Proposed solution:

Funding from the 2020 referendum could

- add dance at Elm;
- merge Roosevelt and Lincoln and provide a complete arts program in one building;
- provide additional supports for dance, theater, and music at Parkside and ALBA;
- provide additional supports for the musicals at Kluge, Manitoba, and Sherman.



MILWAUKEE
PUBLIC SCHOOLS

Questions?