

Report and Possible Action on the Gifted and Talented Identification

March 10, 2022



MILWAUKEE
PUBLIC SCHOOLS

Presenter:

Melanie R. Stewart, Ph.D., Director Research, Assessment and Data

Susan O'Brien, Javits Grant Coordinator

Dr. Keith P. Posley, Superintendent

FIVE PRIORITIES FOR SUCCESS

Improve District and School Culture

Ensure Fiscal Responsibility and Transparency



Increase Academic Achievement and Accountability

Develop Our Staff

Strengthen Communication and Collaboration

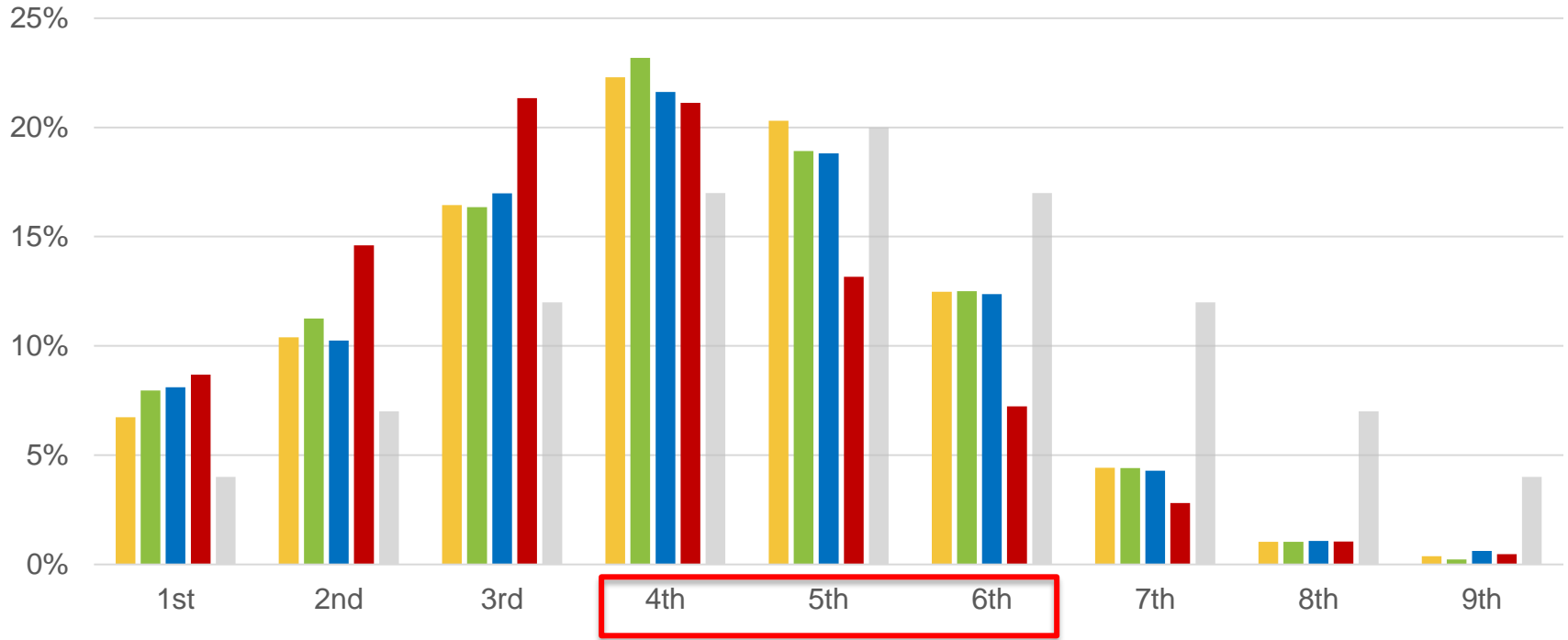
Identification of Gifted & Talented Students

- Milwaukee Public Schools uses a variety of assessments to identify high ability and potential in students
 - Cognitive Abilities Test (CogAT) in 2nd grade
 - Teacher Observation of Potential in Students (TOPS)
 - Star



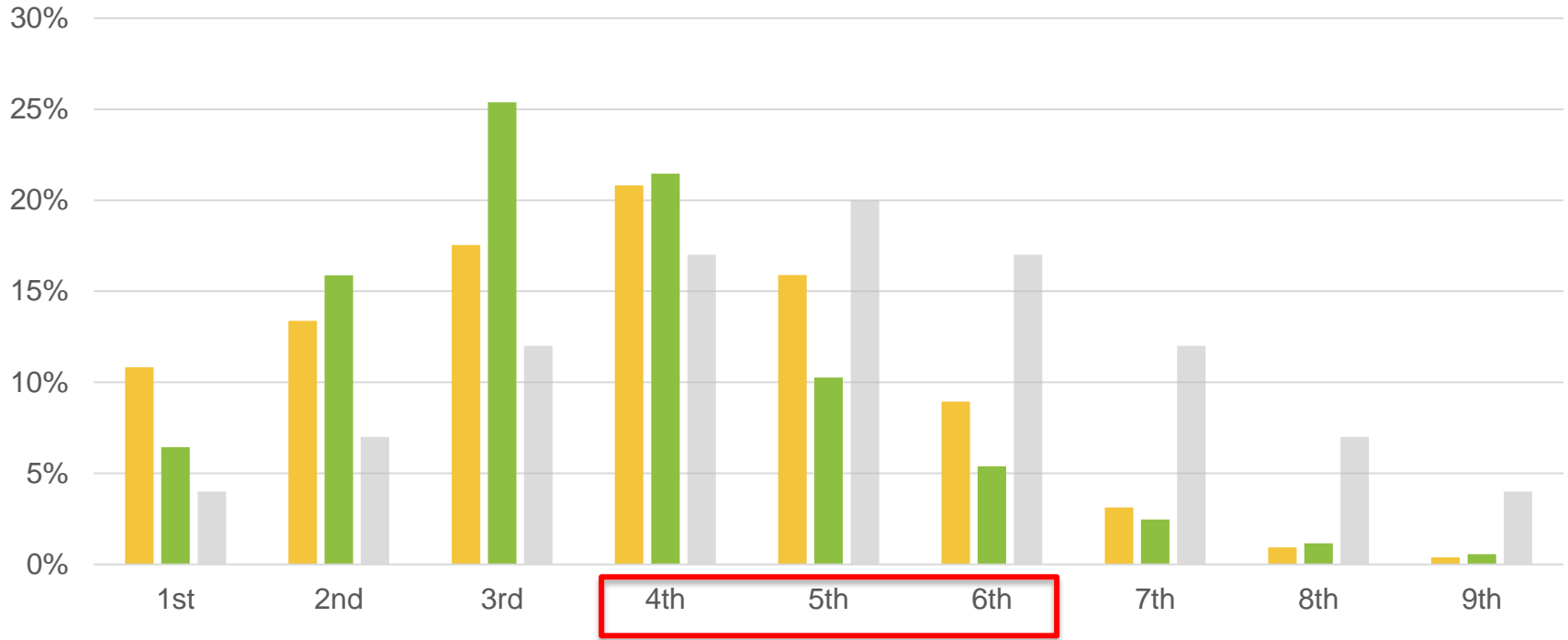
Cognitive Abilities Test Screener - Composite Score

Percent of Students in Each Stanine



2021 CogAT 2nd and 3rd Grade Screener - Composite Score

Percent of Students in Each Stanine



■ 2nd Grade ■ 3rd Grade ■ Normal Distribution

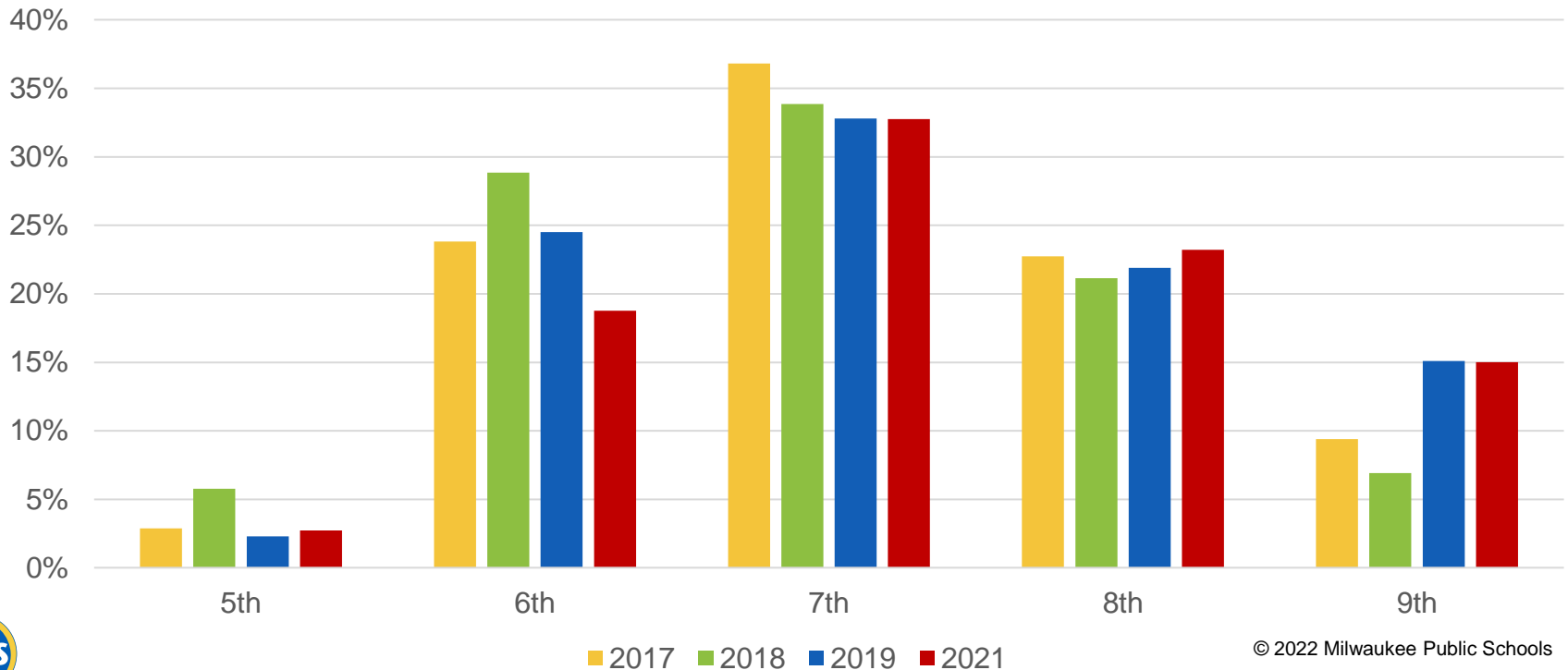
Identified Students from CogAT Screener – Fall 2021

- The CogAT Screener identified 175 2nd grade students and 155 3rd grade students that scored in the 7th, 8th or 9th stanine, making them eligible for the Post-Screener.
- Those identified students came from 65 different schools compared to 67 schools in 2019, 73 schools in 2018, and 37 schools in 2017.
- 31% of students who took the Post-Screener (92) scored in the 9th stanine on at least one section of the assessment, compared to 34% in 2019.

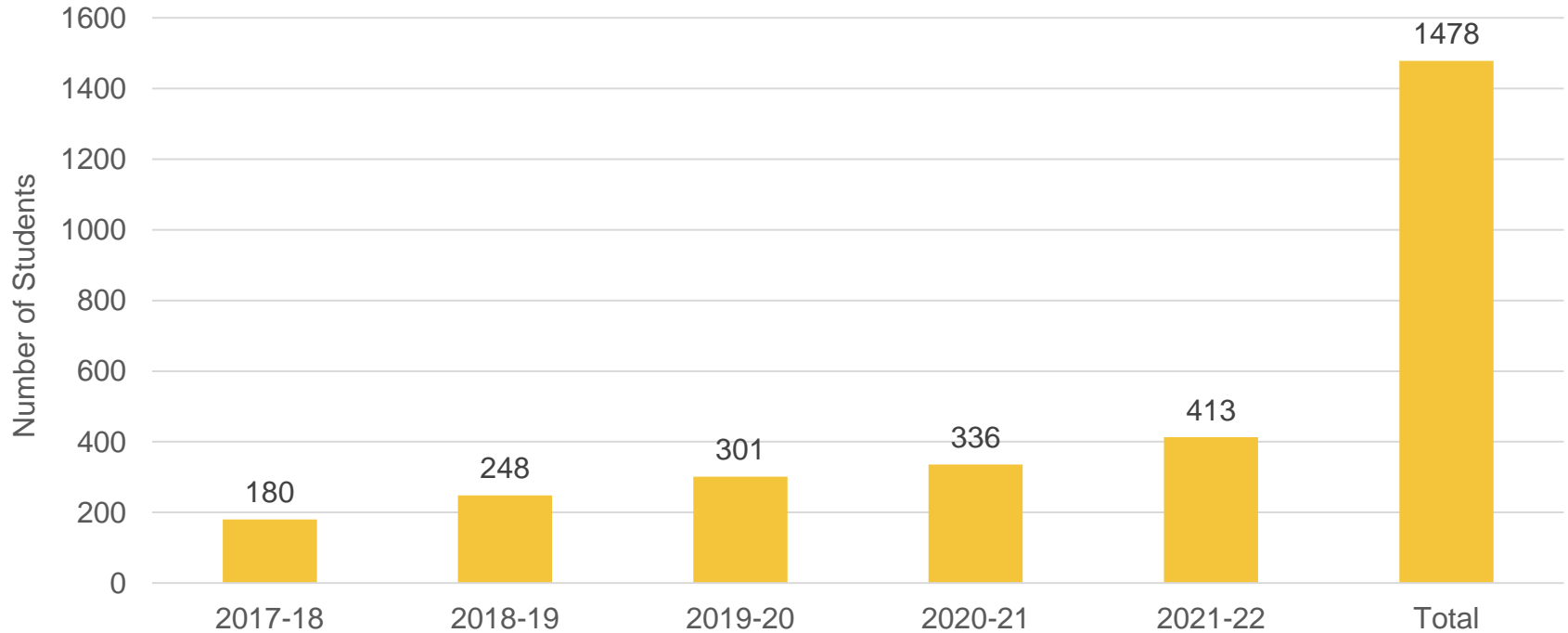


Age Stanine Distribution: Post-Screener Composite Score

Percent of Students in Each Stanine



Identification with TOPS



Javits Grant Schools

SEE US!

Bethune	Congress	Kilbourn	Siefert	Thoreau
Clarke	Jackson	Parkview	Story	
Clemens	Keefe	Sherman	Stuart	

SURGE Schools

Garland	Hawthorne	Lowell	Rogers
Hartford	Hayes	Manitoba	Zablocki

Star Data

Additional students are identified for enrichment when they score at or above the 75th percentile.

	Fall 2019	Fall 2021
Early Literacy	1193	181*
Reading	2871	1967
Math	5813	2588

*Only grade one included in 2021

Meeting Student Needs

- Direct services to students
- Teacher Professional Development and coaching
- Family supports and services
- Grants to increase opportunities for identification and services



Thank you



Dr. Keith P. Posley, *Superintendent*

© 2022 Milwaukee Public Schools • 12