

Montessori Strategic Plan Update

February 13, 2020



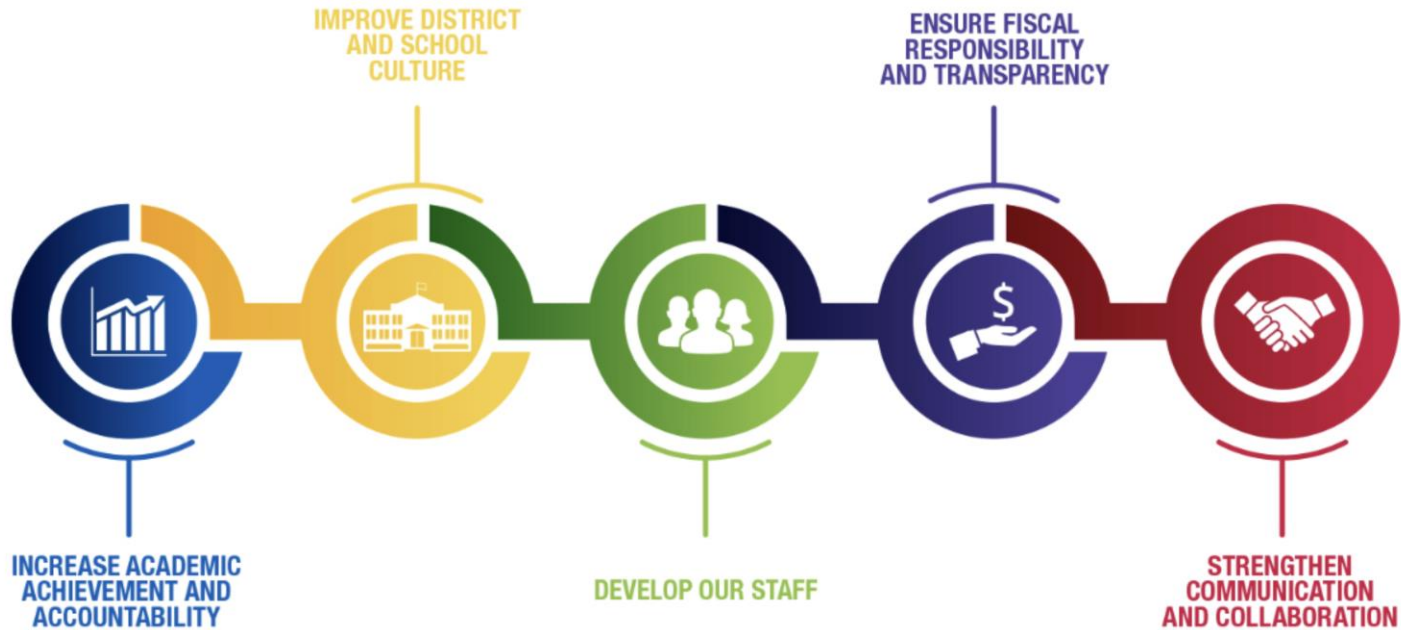
MILWAUKEE
PUBLIC SCHOOLS

Presenters:

Abigail Rausch, Montessori Coordinator, Department of Curriculum and Instruction
Andrea Corona, Principal, MacDowell Montessori School

Dr. Keith P. Posley, *Superintendent*

Five Priorities for Success



Montessori Strategic Plan Progress

Completed Work

- Provided Montessori-specific, districtwide Professional Development
- Presented paraprofessional onboarding professional development
- Observed Montessori school in Minneapolis, MN
- Held Montessori Summit at MacDowell Montessori
- Targeted marketing: Barbee, Craig, Riley
- Updated and reformatted Montessori information on the MPS website

Current Work

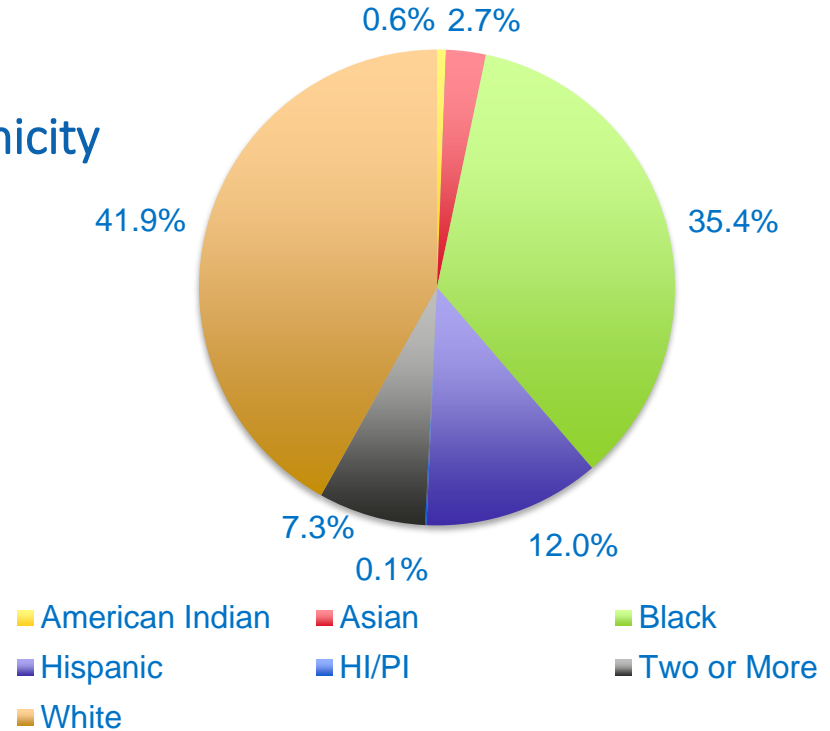
- Establishing consultations through the Wisconsin Montessori Association
- Finalizing Montessori Essential Elements
- Establishing scholarship criteria for MPSU-Montessori trainees

Diversity is Our Greatest Strength

MPS Demographics 2019-20

- 3,500 Students
- 7 (8) Schools
- 0.4% English Language Learners
- 14.9% Students with Disabilities
- 45.4% Economically Disadvantaged

• Ethnicity



Riley Elementary has Montessori classes through grade 1

* As of January 29, 2020



Points of Pride for the Montessori Schools

- Attendance 94.7%
- Stability 90.4%
- Absenteeism 6.2%
- Suspension Rate 5.3%

* As of January 29, 2020



WI Forward Exam Data

All Montessori	Enrollment in Tested Grades 2018	Enrollment in Tested Grades 2019	2018 English Language Arts	2019 English Language Arts	Change	2018 Mathematics	2019 Mathematics	Change
All	1301	1312	34.5%	37.0%	2.5%	23.1%	24.1%	1.0%
Amer. Indian	*	*	*	*	*	*	*	*
Asian	31	27	35.5%	33.3%	-2.2%	35.5%	40.7%	5.2%
Black	513	488	10.9%	11.7%	0.8%	6.0%	4.3%	-1.7%
Hispanic	173	169	28.9%	32.6%	3.7%	19.7%	17.8%	-1.9%
Pacific Islander	*	-	*	-	-	*	-	-
Two or More	69	82	33.3%	39.1%	5.8%	20.3%	24.4%	4.1%
White	506	538	60.1%	61.3%	1.2%	41.1%	43.1%	2.0%
Not Tested	27	20/21	2.1%	1.5%	-0.6%	2.1%	1.6%	-0.5%

* Student groups fewer than 10 students

- No data

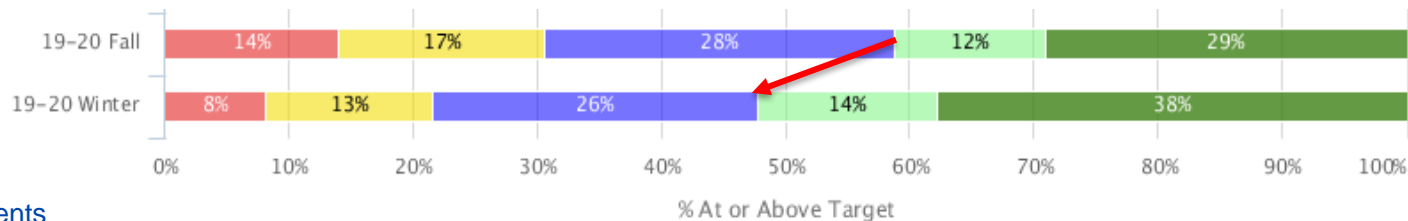


Star Data Montessori

Early Literacy*

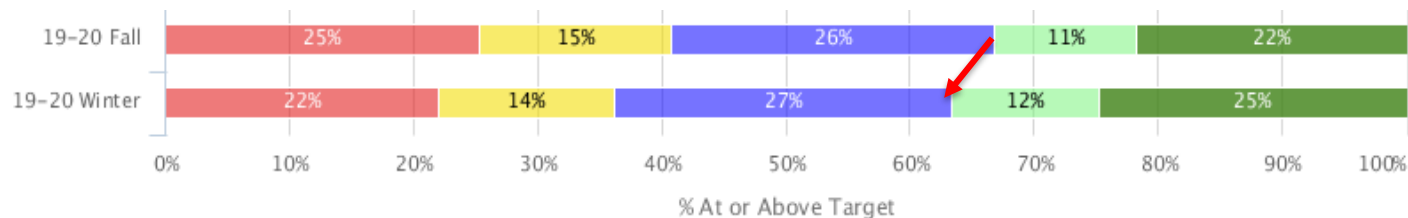
84 more students on target to proficiency, 72 fewer students below basic

*Includes Riley Elementary Students



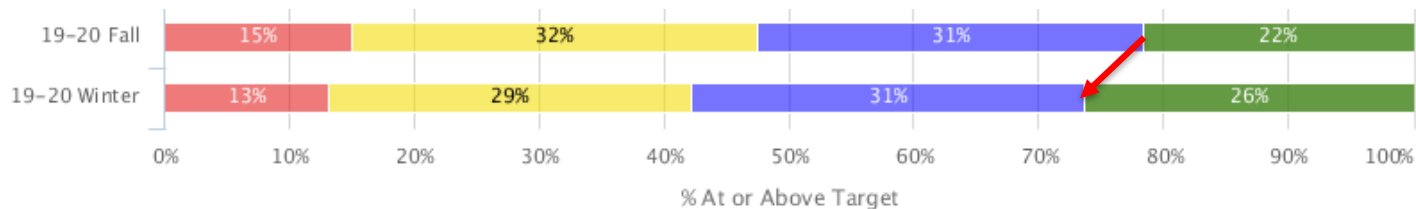
Reading

64 more students on target to proficiency, 86 fewer students below basic



Math

102 more students on target to proficiency, 126 fewer students below basic



Significantly Below Target Well Below Target Below Target On Target Significantly Above Target



Updated MPS Montessori Web Page

Montessori



What Is Montessori?

Dr. Maria Montessori, the Italian pediatrician who founded the methodology over 100 years ago, believed that when children are given the freedom to choose their own learning activities, a self-confident, inquisitive, creative child emerges. By observing the way children learn through exploration, Dr. Montessori developed a new system of education. Her philosophy allows children to grow their skills through hands-on learning.



Initial Board-Approved Montessori Strategic Plan

Contact

Abigail Rausch
Montessori Coordinator
Phone: 414-475-8571
Email: rauschav@milwaukee.k12.wi.us

Montessori in MPS

- Curriculum
- Montessori Advisory Committee (MAC)
- MPS Montessori Summit
- Overview
- Schools
- Teachers

MPSU – Montessori Teacher Pathways

MPSU–UW River Falls

- **Began January 25**
- **Montessori training for grades 1-6**
- **Currently licensed teachers**
- **Goal of 12 enrollees, 7 enrolled currently**
- **Interested teachers can still enroll in the program**

Secondary Training

- **Recommended for teachers of grades 7-12**
- **Research on available training programs has been conducted**
- **Starting goal spring 2021**

Montessori Strategic Plan: Next Steps

February
2020

- Attending AMI Conference, Seattle, WA
- Developing Teacher Retention Survey
- Compiling student retention data

March
2020

- Attending AMS Conference, Dallas, TX
- Identifying teacher staffing needs for each school

April
2020

- Finalizing Montessori Essential Elements

Thank you.

Presenters:

Abigail Rausch, Montessori Coordinator, Department of Curriculum and Instruction

Andrea Corona, Principal, MacDowell Montessori School



Dr. Keith P. Posley, *Superintendent*