

Central Region Showcase

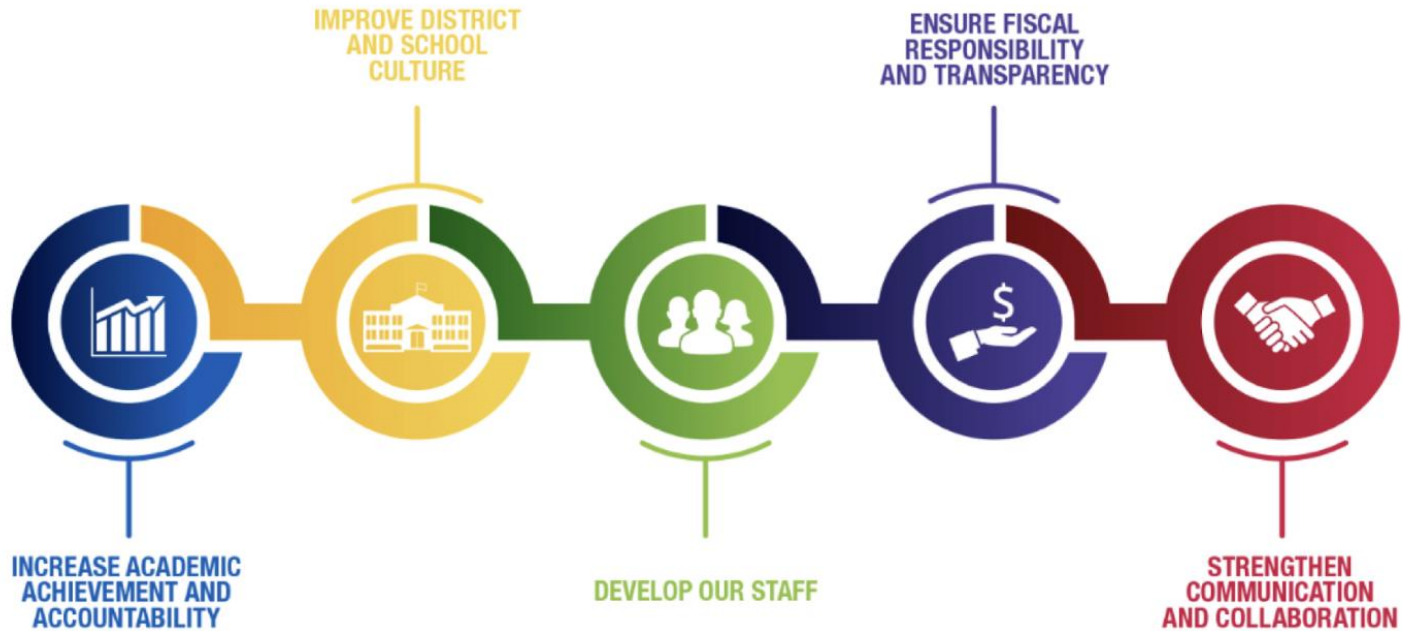
November 3, 2022



Presenters: Dr. Carletta Noland, Regional Superintendent, Office School Administration
Ms. Jenna Harer, Principal, Milwaukee French Immersion School

Dr. Keith P. Posley,
Superintendent

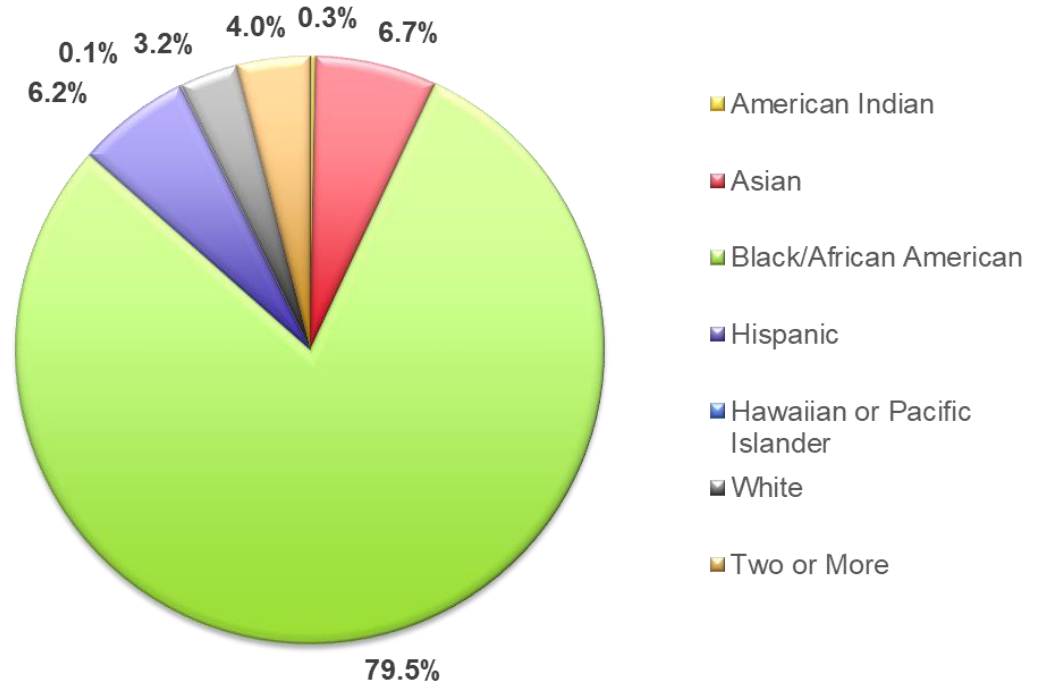
Five Priorities for Success



Region Demographics

- **6,662 students**
- **22 schools**
- **6.6% English language learners**
- **19.2% students with disabilities**
- **92.2% economically disadvantaged***

* Alternate Income Forms are still being collected and processed.



State Report Card

2020-2021 Wisconsin State Report Card Overall Scores and School Ratings

Pratt Elementary	89.3	Significantly Exceeds Expectations	Story Elementary	58.4	Meets Expectations
Starms Discovery	66.6	Meets Expectations	Westside Academy	58.2	Meets Expectations
Milwaukee French Immersion	65.9	Meets Expectations	Burbank Elementary	54.8	Meets Few Expectations
Clemens Elementary	64.8	Meets Expectations	Auer Avenue School	53.8	Meets Few Expectations
LaFollette Elementary	63.3	Meets Expectations	Hawley Environmental School	53.3	Meets Few Expectations
Neeskara Elementary	62.8	Meets Expectations	Barbee	52.4	Meets Few Expectations
Franklin Elementary	62.7	Meets Expectations	Keefe	52.3	Meets Few Expectations
Bethune Academy	62.5	Meets Expectations	Sherman	47.1	Fails to Meet Expectations
Fifty-Third Street Elementary	62.3	Meets Expectations	Jackson	26.0	Fails to Meet Expectations
Clarke Street Elementary	61.2	Meets Expectations	Hopkins	21.2	Fails to Meet Expectations
Metcalfe Elementary	61.2	Meets Expectations			



Milwaukee French Immersion School is committed to making language immersion education accessible to all students. We ensure each student reaches his or her full potential by...

- ⦿ **Embracing the unique backgrounds and cultural identities of our students and staff.**
- ⦿ **Exposing our students to the Francophone world through rich language and cultural experiences.**
- ⦿ **Providing a rigorous academic curriculum with supports for student needs while building upon student strengths.**
- ⦿ **Expanding our curriculum to include lessons/units that impart the historical and current impact of oppression and the realities of racial inequities.**
- ⦿ **Closing the racial achievement and opportunity gaps among students.**

Local learning and global thinking since 1978.

Nous sommes fiers de parler français et de connaître le monde francophone. Nous sommes respectueux, responsables, et en sécurité. Nous sommes différents, uniques, et plus forts ensemble.

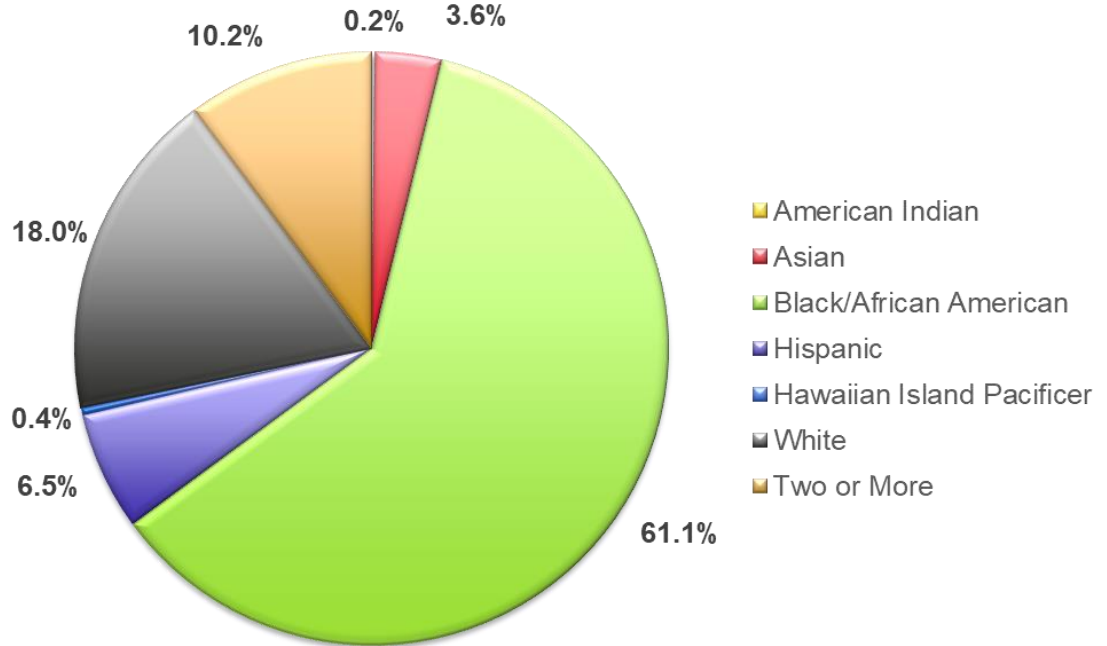
Nous sommes MFIS.



MFIS Demographics

- **449 students**
- **K4 to grade 8**
- **4.5% English language learners**
- **7.8% students with disabilities**
- **63.7% economically disadvantaged***

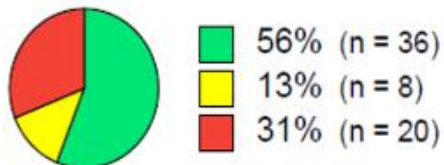
* Alternate Income Forms are still being collected and processed.



Early Literacy - IDAPEL

Kindergarten Fall 2022

Facilité à Reconnaître le Premier Son






Number of Students = 64

Average = 16

Standard Deviation = 13.8

Score Range = 0 to 45

Status	Score Level
	At or Above Benchmark
	Below Benchmark
	Well Below Benchmark

First Grade Fall 2022

Facilité à Dénommer des Lettres



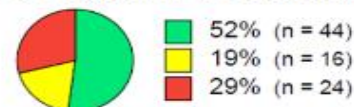
Number of Students = 85

Average = 17.6

Standard Deviation = 12.3

Score Range = 0 to 52

Facilité à Segmenter les Phonèmes PT



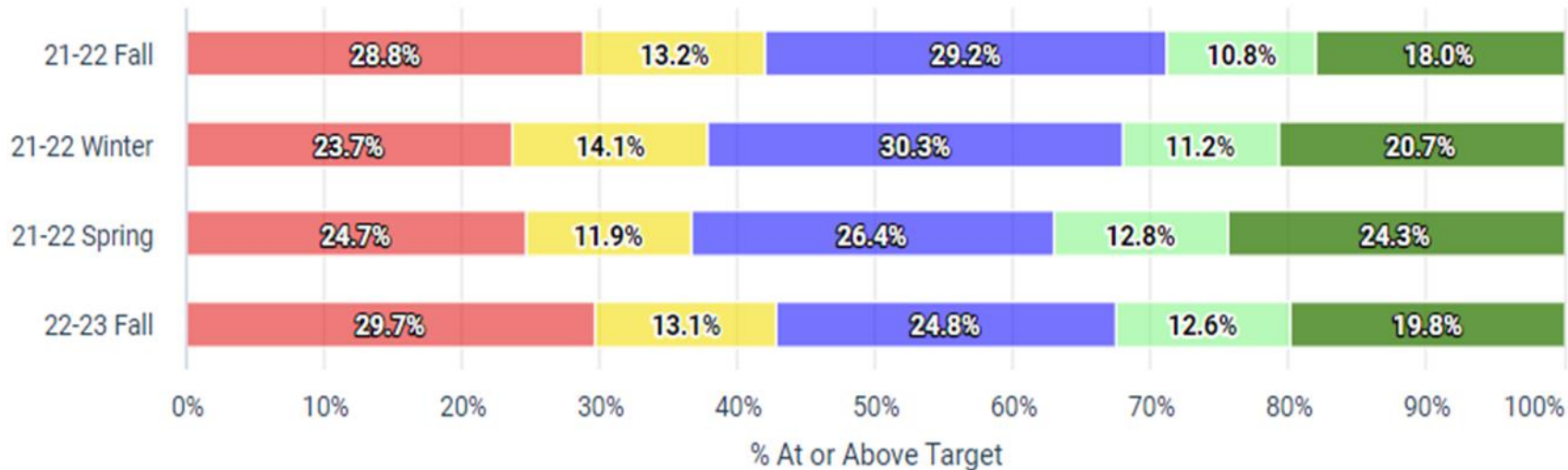
Number of Students = 84

Average = 25.4

Standard Deviation = 17.4

Score Range = 0 to 61

Star Reading



● Significantly Below Target

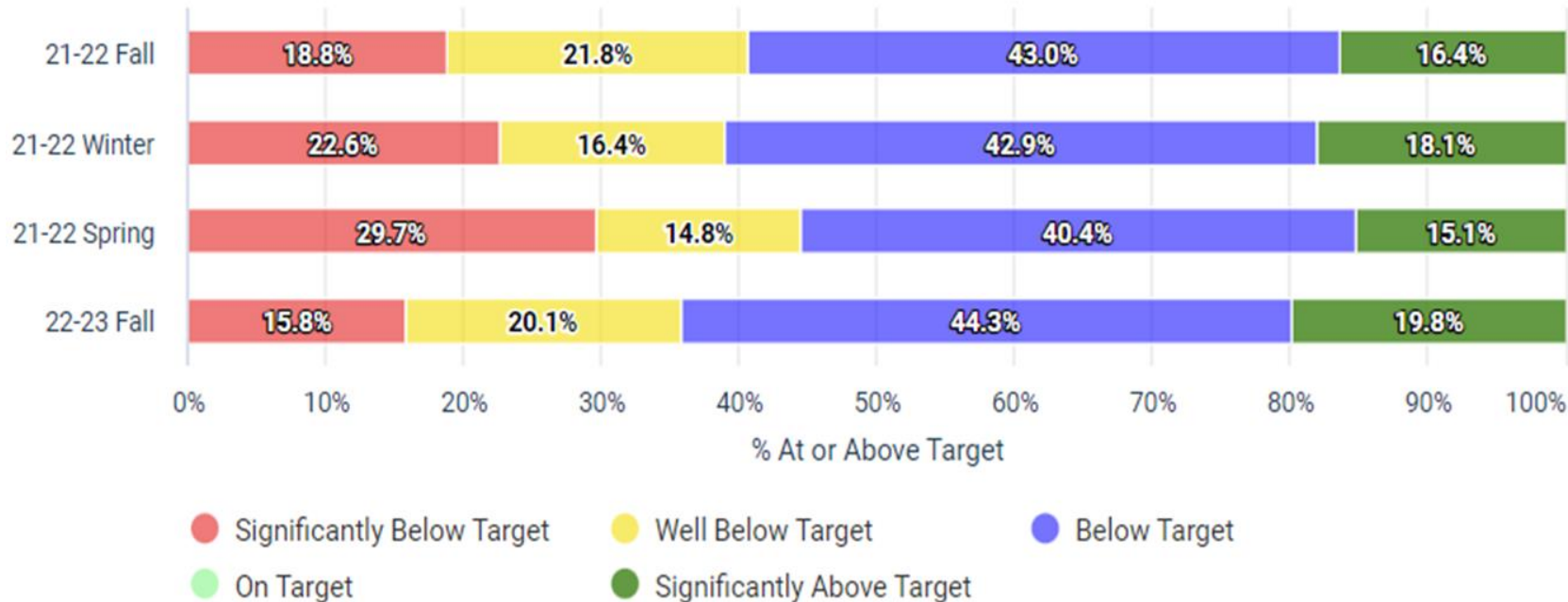
● Well Below Target

● Below Target

● On Target

● Significantly Above Target

Star Math



Language Immersion at MFIS

- **Label France School**
- **French language through instruction and interaction across all subjects**
- **K4 -1st grade receive 90% of instruction in French**
- **English literacy instruction begins in 2nd grade**
- **Music and Art taught in French**



Points of Pride

- African Dance Program
- French Speaking Interns
- DELF exam for French proficiency
- Grand Concoures Oral French speaking contest



Moving Forward

- **Culturally responsive classrooms**
- **Read, read, read**
- **Early childhood literacy**
- **Language acquisition**
- **Strengthening family connections and engagement**



Thank you.



Dr. Keith P. Posley, *Superintendent*

© 2022 Milwaukee Public Schools • 13