

Lincoln Avenue School – Regional Showcase

February 12, 2019

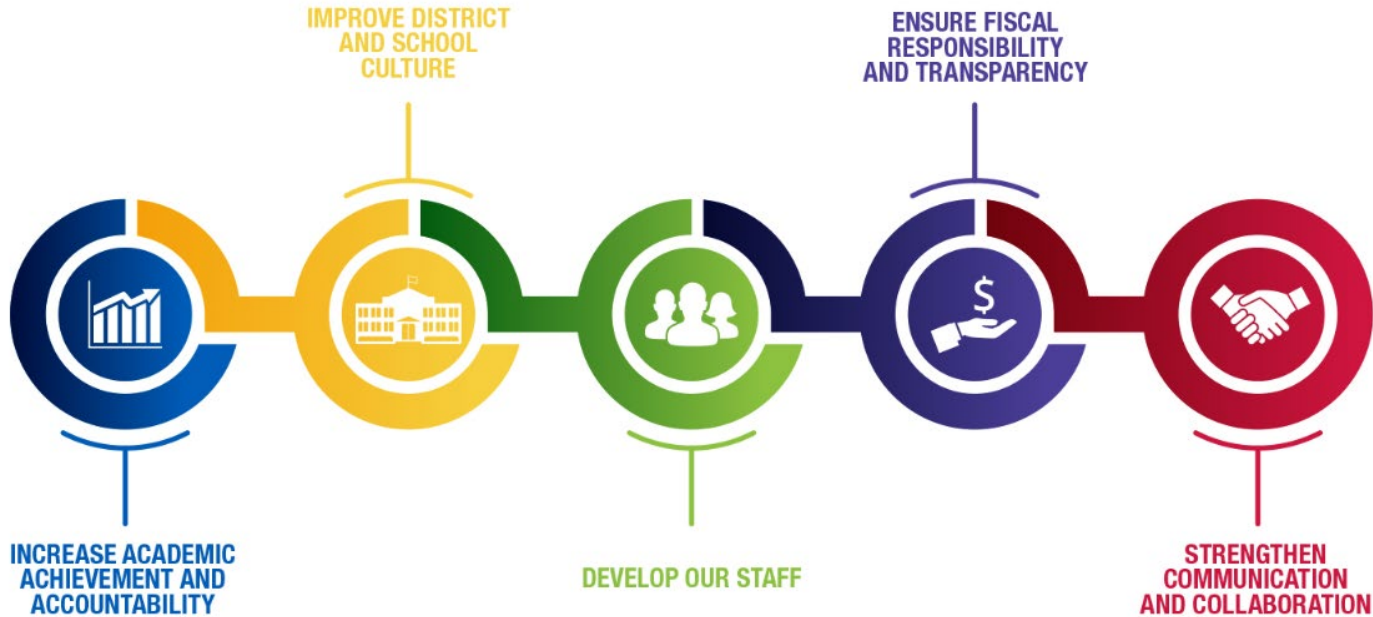


MILWAUKEE
PUBLIC SCHOOLS

Presenters: Eduardo Galvan, Regional Superintendent
Yaribel Rodriguez, Principal, Lincoln Avenue School

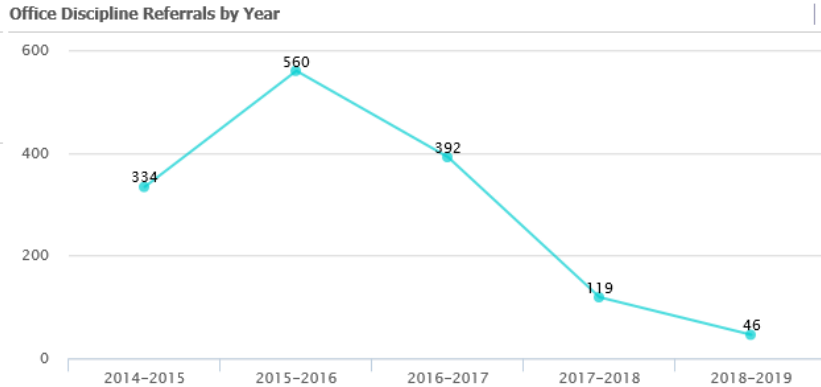
Dr. Keith P. Posley
Superintendent of Schools

5 Priorities for Success

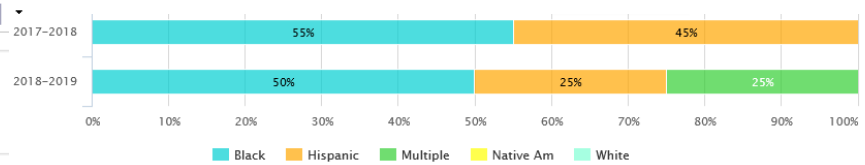


School Climate Data

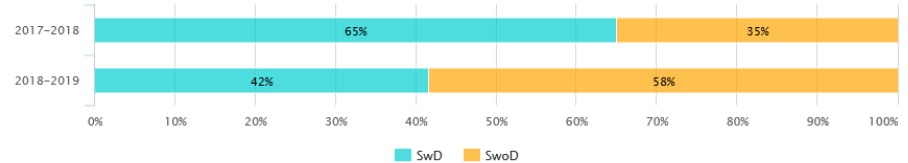
ODR – 5 Year Trend



Suspensions by Race/Ethnicity:



Suspensions by Disability:



Tier 1:

- Morning Meetings
- Eagle Tickets
- Weekly PBIS raffles
- DOJO points
- “I Statements” (Peace Learning)
- “Ready. Set. Go” (Peace Learning)
- Peace Ambassadors (peace Learning)
- Golden Ticket (classroom)

Tier 2:

- CICO
- Individualized CICO
- SAIG

Tier 3:

- FBA/BIP

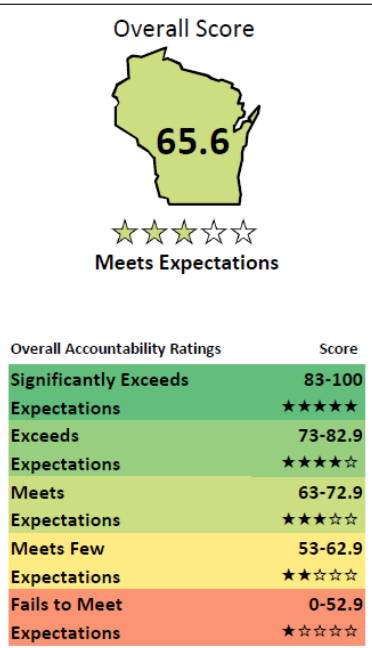
Professional Development and Supports:

- **Weekly BIT-Behavior Meetings**
 - Teachers Invited based on data for support
- Monthly Culturally Responsive Training
- *Starting:* Monthly Data Tracking Meetings for SpEd
- FY 17: Teach Like a Champion – Book Study
- FY 16: Urban Institute for Education – Culturally Responsive Practices Series
- ***Mental Health Clinic coming Spring 2019!***



Academic Progress

+6.5 point increase from **FY 17** to **FY 18** Report Card!



Academic Focus Areas:

- Reading:

- **Research-Based Strategy:** Close Reading

- Informational Text aligned to Science and Social Studies Standards

- Formative: Weekly Response to Reading

- Monthly 2.5 hour grade level release to plan Integrated Reading Block and Formative Assessments
- Monthly After School PD on Close Reading and Focus Reading Strategy
- One-on-One Coaching and Modeling

- **Research-Based Intervention:** Direct Instruction

- Math:

- **Research-Based Strategy:** Higher Order Thinking Problems

- 5-Step Process
- Shared Grading (1 point answer, 2 points work, 2 points explanation)
 - 2x per month grade levels release to plan Higher Order Thinking problems and grade

Academic Progress/District Assessment Data

District Screener Reading Gap Closure					
	<i>FY 15 (MAP)</i>	<i>FY 16 (STAR)</i>	<i>FY 17 (STAR)</i>	<i>FY 18 (STAR)</i>	<i>Winter (STAR) FY 19</i>
ALL	0	-7.1	-5.9	-18.8	-6.7
Black/ African Am.	+ 9	- .7	-6.2	-11	-10.4
Hispanic	-1.4	-8	-6.9	-13.2	-6.4
SpEd	-1.8	-4.6	-.5	-5	-8.1

District Screener Math Gap Closure					
	<i>FY 15 (MAP)</i>	<i>FY 16 (STAR)</i>	<i>FY 17 (STAR)</i>	<i>FY 18 (STAR)</i>	<i>Winter (STAR) FY 19</i>
ALL	-15.7	+6	+2.3	-16.6	-14.2
Black/ African Am.	-25.4	+16	+14.8	-8.3	-14.7
Hispanic	+4	+1.4	-4.2	-20.2	-14.4
SpEd	-10.6	+13.6	+3.7	-14	-6.3



Milwaukee Community Schools Partnership

Partnerships

As a Community School, our goal is to eliminate barriers to student success through focused strategies and innovative programming supported by strategic partnerships. Sixteenth Street Community Health Centers, our lead agency, has been pivotal in streamlining our growth by helping foster new partnerships and aligning grants to key initiatives to secure better outcomes for our students.



Community School Priorities: Safety

Community School Leadership Team Priority #1 Goal:

Students, families, staff and community members will work to align programs and resources to create a safer environment inside of Lincoln Avenue School and the surrounding community.

Accomplishments:

- Traffic Calming Plan:
 - 18th Street One Way
 - New Parking Restrictions on Lincoln Avenue and 18th Street
 - Pick-up and Drop-Off Car Lane (reduce congestion and increase safety)
 - Double-sided STOP sign on 19th and Hayes
 - HAWK Light on 18th and Lincoln (Coming SOON!!!)
- Lincoln's Laps (Walking Club)
- Peace Ambassadors
- **Walking School Bus**
- Neighborhood Block Watch – Started November 2018
- **[Mental Health Clinic Approval – Start Winter 2019](#)**

A screenshot of a news article from Wisconsin Public Radio (NPR). The article is titled "CENTRAL TIME" and features a photograph of a yellow walking bus with children. The text describes how Regina Stieber leads Lincoln Avenue Elementary students to school as part of a walking bus. The article is titled "Milwaukee Elementary School's 'Walking Bus' Improves Attendance, Warms Hearts".

WISCONSIN PUBLIC RADIO npr

MENU LISTEN LIVE

CENTRAL TIME

Regina Stieber leads Lincoln Avenue Elementary students to school as part of a walking bus. Photo courtesy of Regina Stieber

Milwaukee Elementary School's 'Walking Bus' Improves Attendance, Warms Hearts



Community School Priority: Parent Engagement

Community School Leadership Team Priority #2 Goal:

Work collaboratively to increase parent participation, student attendance and overall recruitment at Lincoln Avenue School.

Accomplishments:

- Walking School Bus (Parent Leaders)
- Lincoln's Laps
- Doughnuts with Dad (150 father figures)
- Muffins with Mom
- Recruitment and Retention Committee
- Increased PTO membership



Big NEWS...



Proud to be a
**Sugar
Maple
School**

We are 1 of 35 schools in the
STATE with this distinction!!!
ONLY BILINGUAL SCHOOL!!!

Sugar Maple is the highest distinction awarded to schools in Wisconsin for demonstrating achievement in the nine focus areas.



Community



Energy



Environmental &
Sustainability
Education



Environmental
Health



Health & Wellness



Recycling & Waste
Management



School Site



Transportation



Water



Community School Priority: Sustainability

Community School Leadership Team Priority #3 Goal:

Working collaboratively to increase Green and Sustainable practices at Lincoln Avenue School to achieve National Green Ribbon recognition by 2021.



Accomplishments:

- Alley Beautification and Safety Project with Great Lakes Conservation Artist Melanie Ariens
- Green Team (student and staff)
 - Composting and Recycling
- Ten Community Garden Beds
- Pergola with water catchment system approved and to be built in 2019 Spring!
- Bioswale (Grant from the City and Sixteenth Street Community Health Centers)
- KK River Explorers
- Walking School Bus
- Lincoln's Laps



Thank you!

