

East Region Showcase

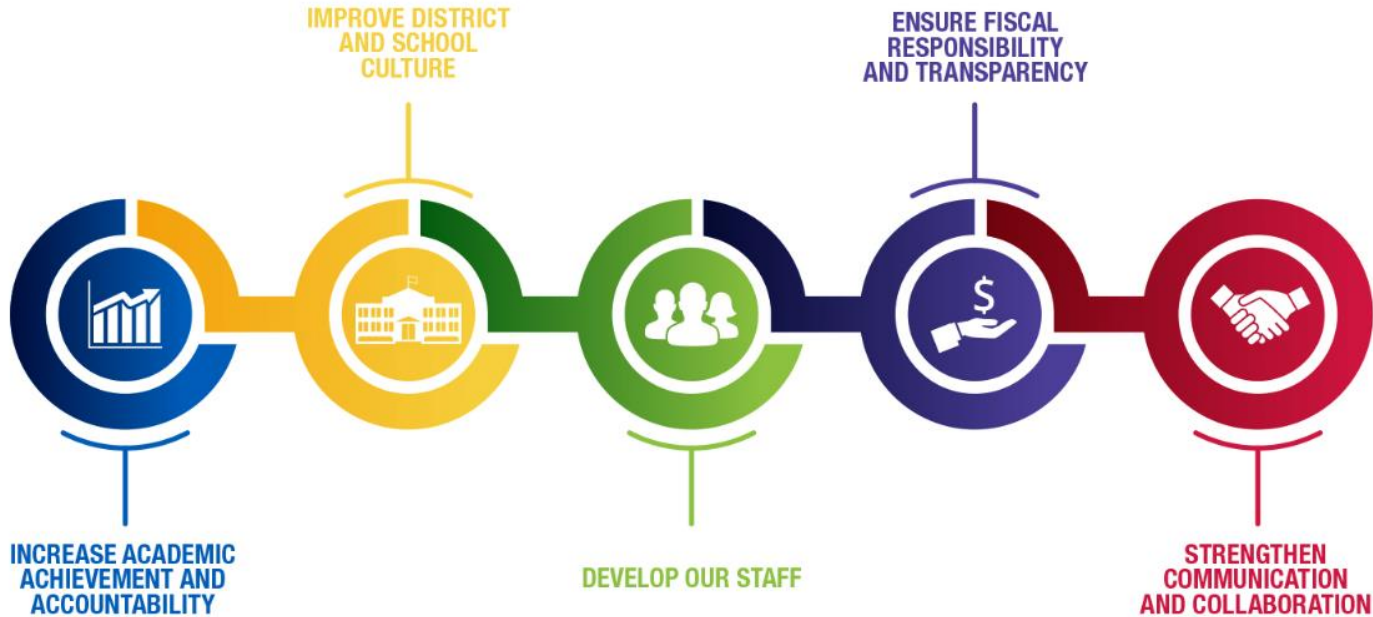
October 13, 2022



Presenters: Dr. Toni M. Dinkins, Regional Superintendent
Shannon Kilsdonk, Principal, Clement Avenue School

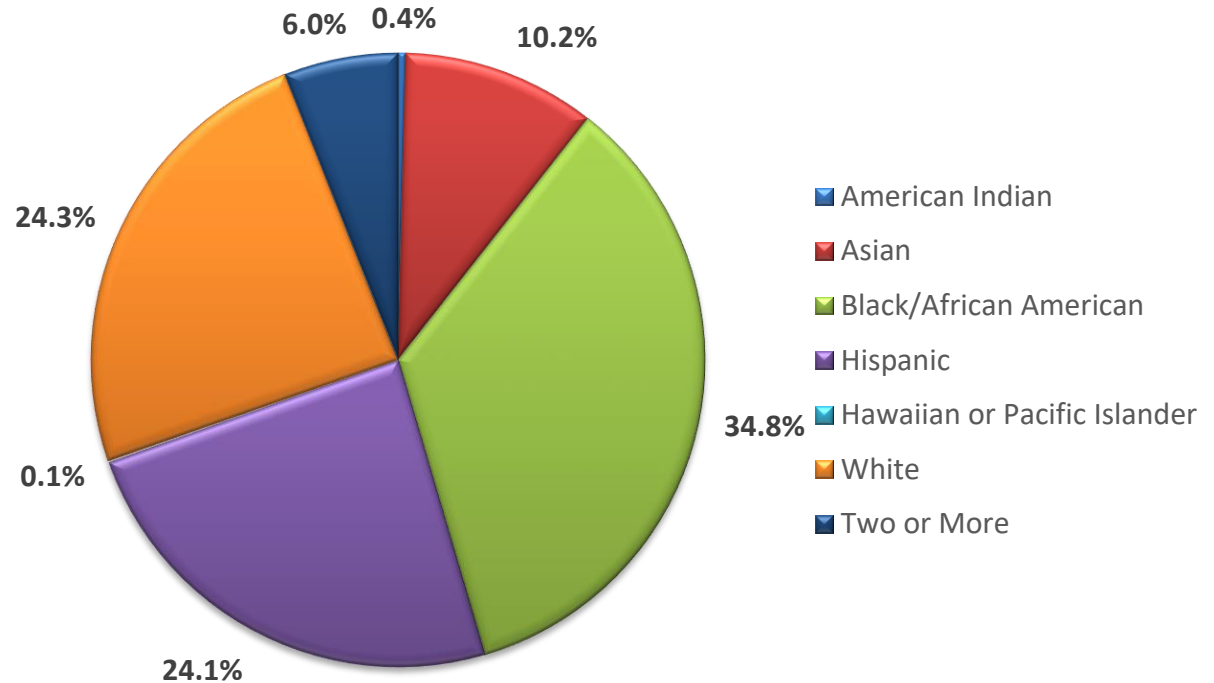
Dr. Keith P. Posley,
Superintendent

5 Priorities for Success



East Region Current Demographics

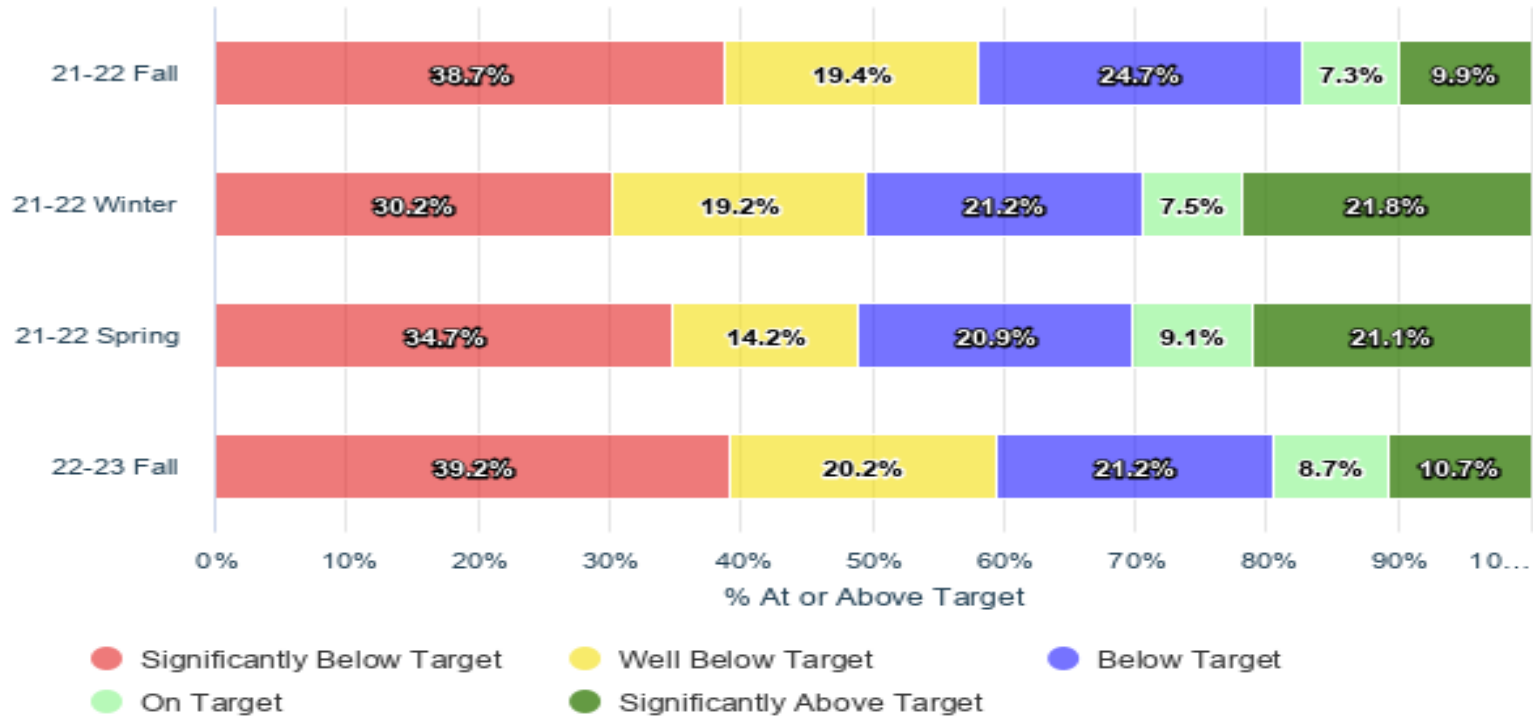
- 9,287 students
- 23 schools
- 12.3% English language learners
- 16.5% students with disabilities
- 67.5% economically disadvantaged*



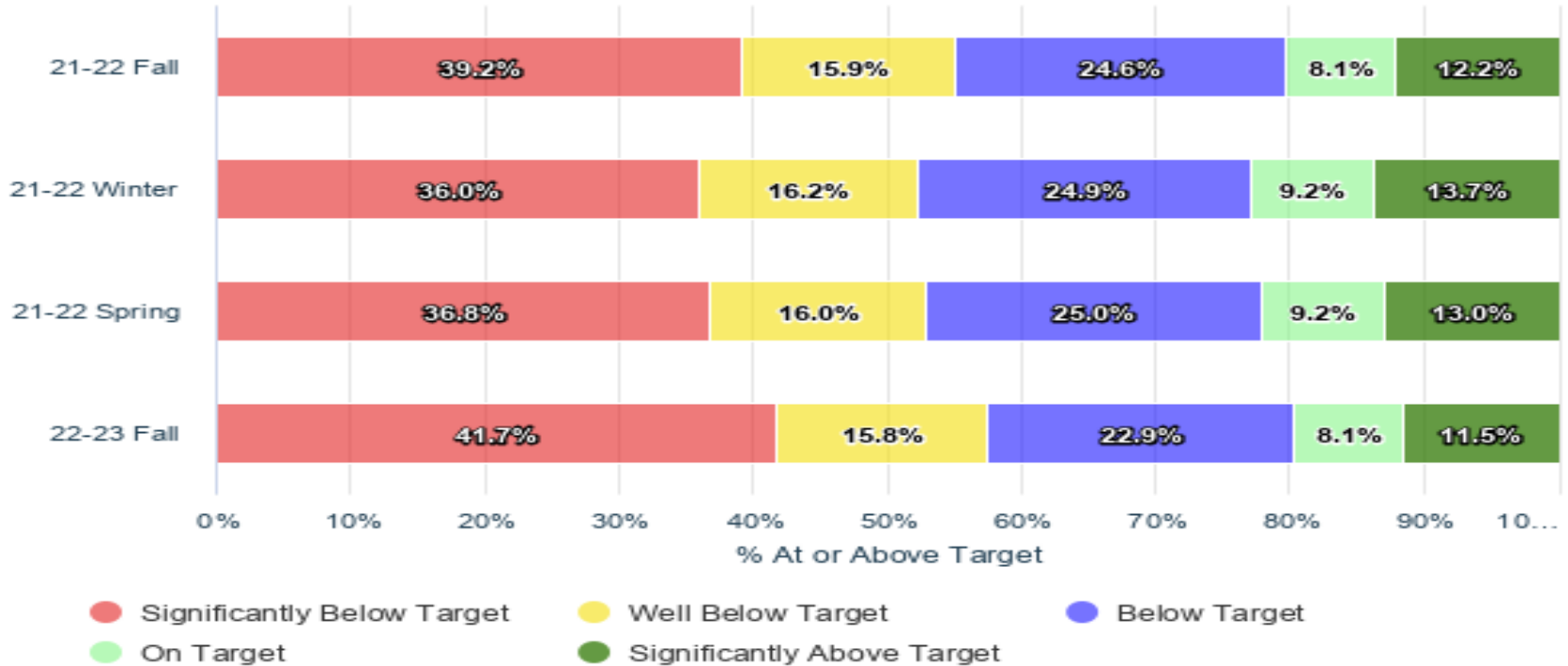
State Report Cards

Bay View Montessori School	85.5	Significantly Exceeds Expectations	Siefert Elementary	62.4	Meets Expectations
Maryland Montessori	83.8	Significantly Exceeds Expectations	Trowbridge Street School of Great Lakes Studies	61.0	Meets Expectations
Milwaukee Parkside School	81.6	Exceeds Expectations	Holmes Elementary	60.7	Meets Expectations
Fernwood Montessori	76.4	Exceeds Expectations	Hartford Avenue Elementary	58.5	Meets Expectations
Cooper Elementary	76.2	Exceeds Expectations	Clement Avenue Elementary	58.3	Meets Expectations
IDEAL	76.1	Exceeds Expectations	Brown Street Academy	55.7	Meets Few Expectations
Whittier Elementary	74.1	Exceeds Expectations	Cass Street Elementary	53.2	Meets Few Expectations
Carver Academy	72.9	Exceeds Expectations	Fratney Elementary	51.4	Meets Few Expectations
Milwaukee Academy of Chinese Language	70.8	Exceeds Expectations	Riverwest Elementary	51.1	Meets Few Expectations
Burdick Elementary	70.4	Exceeds Expectations	Elm Creative Arts Elementary	33.2	Fails to Meet Expectations
Victory Elementary	69.0	Meets Expectations	Garland Elementary	AR	Alternate Rating - Needs Improvement
Humboldt Park Elementary	67.9	Meets Expectations			

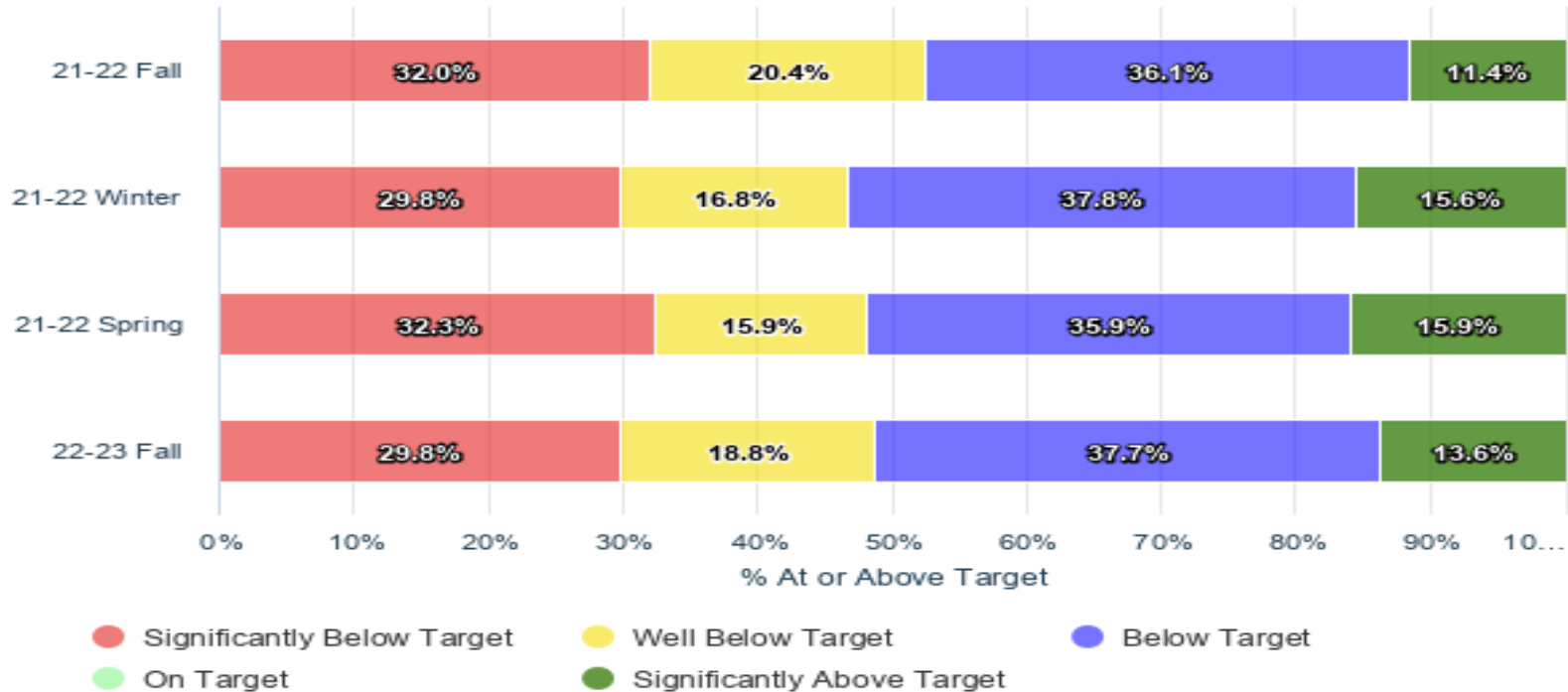
East Region Star Early Literacy



East Region Star Reading Data



East Region Star Math Data



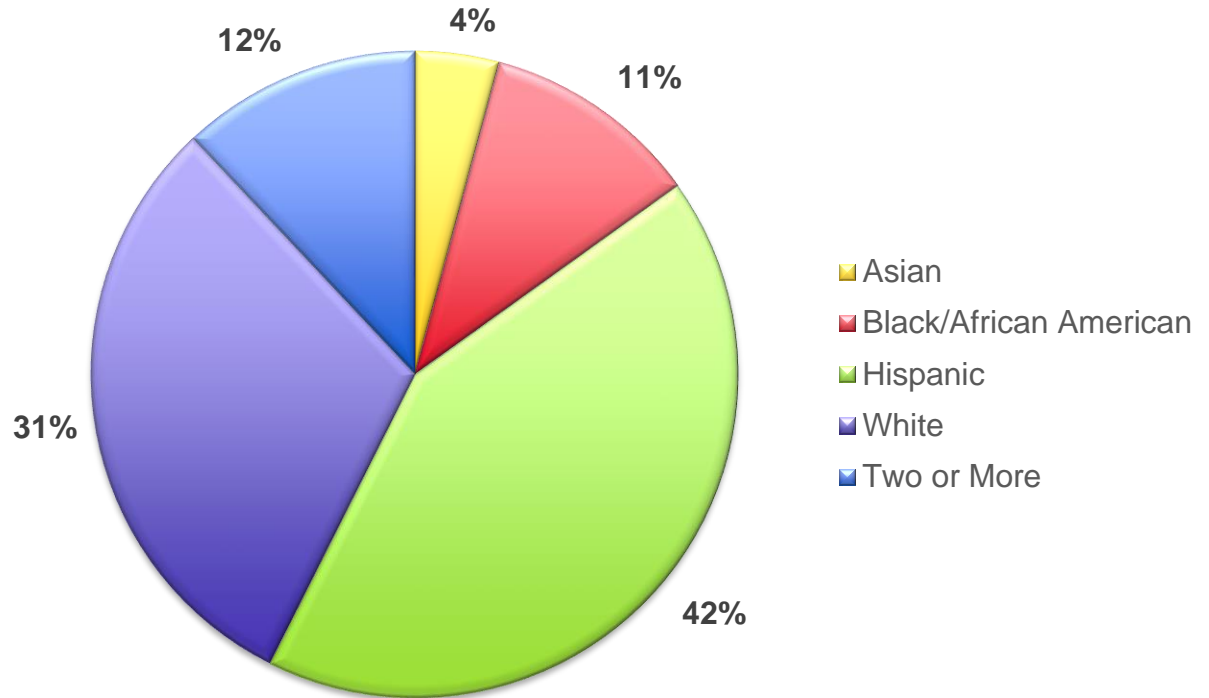
Clement Avenue School Vision

Clement Avenue School fosters independent thinkers through equitable, and environmentally responsible practices. Our community develops the physical, social, and emotional well-being of all students which prepares them to be engaged, global citizens, and life-long learners.

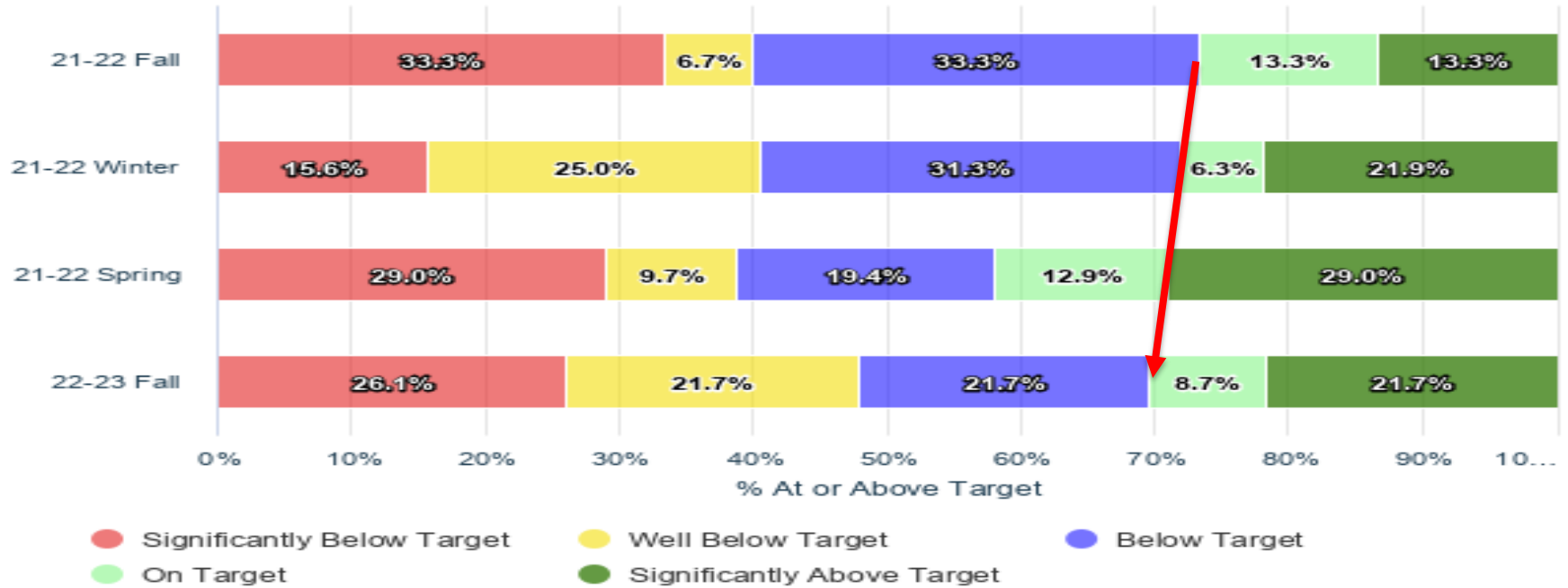


Clement Avenue School

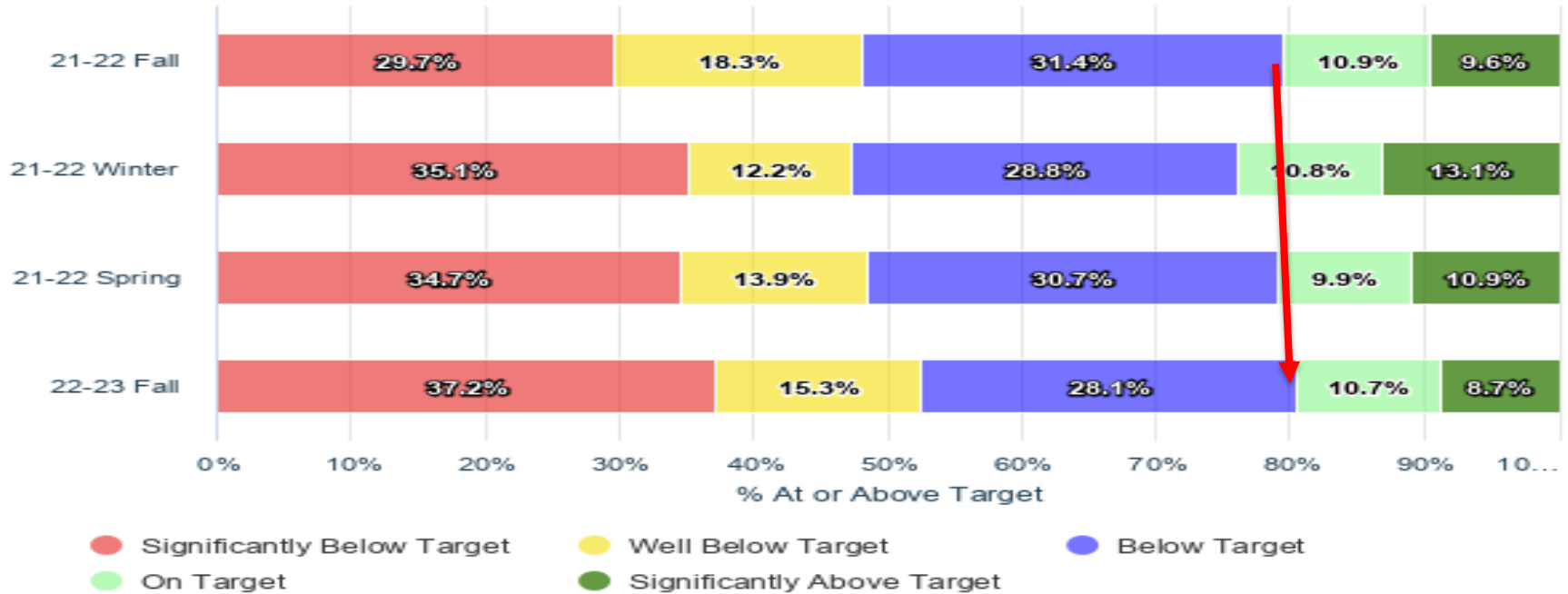
- 284 students
- K4 to grade 8
- 1.4% English language learners
- 20.8% students with disabilities
- 78.2% economically disadvantaged



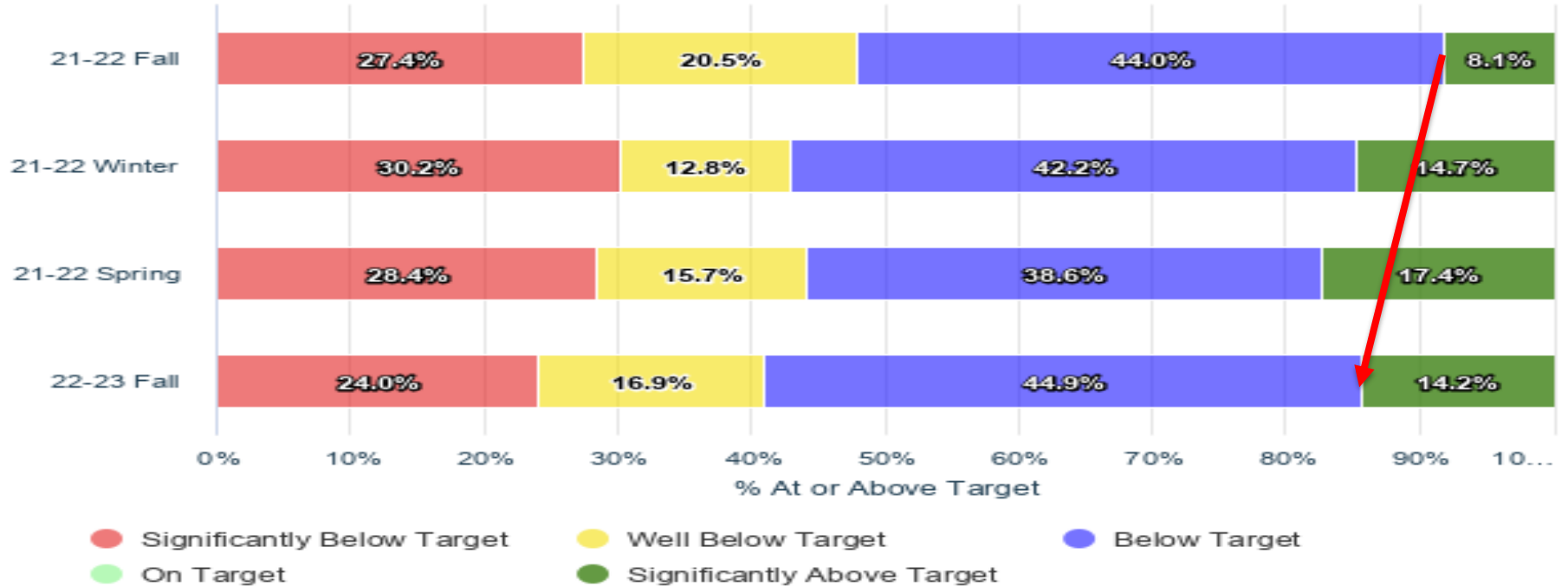
Early Literacy Star Data



Reading Star Data



Math Star Data



Clement Avenue School Programming

Bay View's Green School

- 🌱 We host an Annual Dinner Theater production since 2010
- 🌱 Partnerships with ACE, Danceworks and Sunset Playhouse
- 🌱 Fresh Fruits and Vegetable Program
- 🌱 Fork Farms hydroponic tower run by our student Green Team
- 🌱 Morning Meetings in every classroom
- 🌱 Intentional practices to support cultural connections with staff students and families
- 🌱 Partners with Compost Crusader with weekly compost pick-ups



Clement Avenue School Points of Pride

- 🌱 Recipient of U.S. Department of Education Green Ribbon Schools – 2021
 - ✂ Landfill waste decreased from 25 (40 gallon) trash bags to 3 (40 gallon) trash bags, daily
 - ✂ Awarded Green Educator of the Year (2021) and Most Supportive Engineer (2022) by Green and Healthy Schools Wisconsin
 - ✂ The Green schoolyard includes a beautiful outdoor classroom, a soccer field, and a bicycle lane with a bicycle repair station
 - ✂ The Green schoolyard also includes a built-in rainwater harvesting system which can manage approximately 69,000 gallons of stormwater per rain event
- 🌱 Annually awarded top performances at state competitions in Forensics
- 🌱 Recognized as an RTI and PBIS School of Distinction

East Region Opportunities for Growth

- Increase the percentage of students on STAR scoring On or Above Target in Early Literacy, Reading, and Math by Spring 2023 through standards based, Tier 1 instruction
- Increase attendance rates by focusing on school climate and culture
- Expand school programming to offer opportunities for students in extra-curricular areas
- Decrease suspension rates during the 2022-23 school year



Thank you.



Dr. Keith P. Posley, *Superintendent*