



MILWAUKEE
PUBLIC SCHOOLS

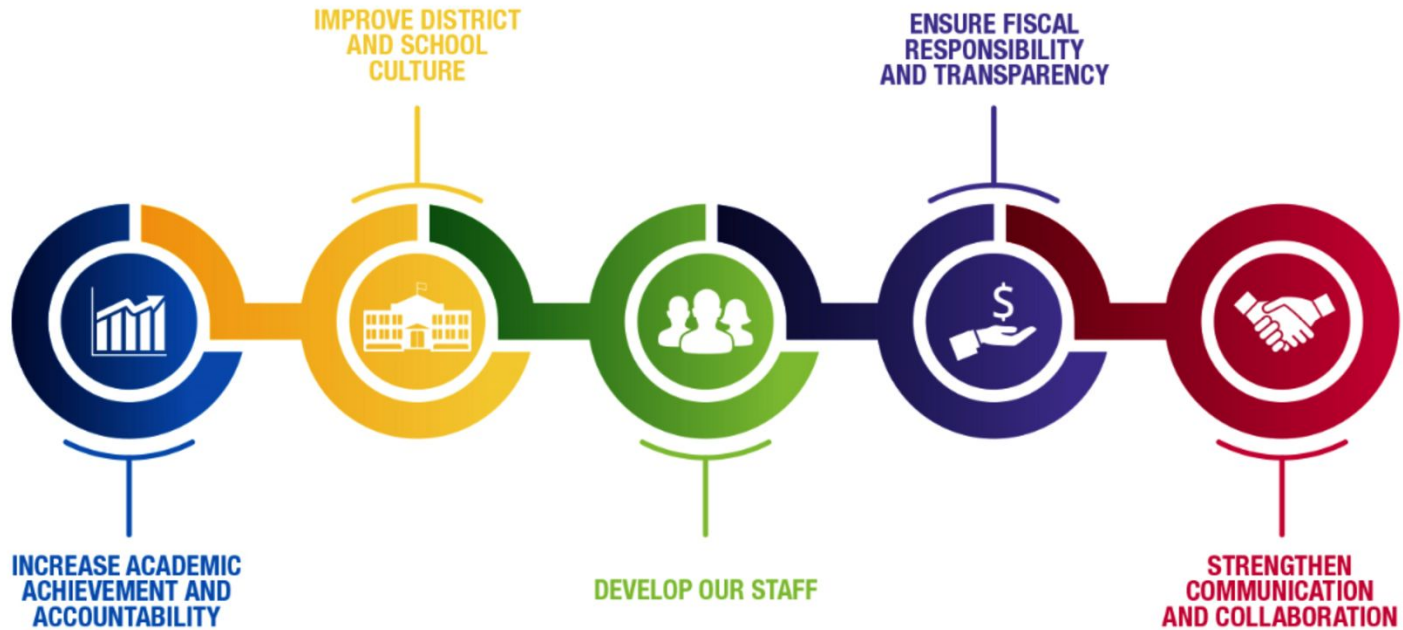
Act 20 Overview

August 2024

MPS Act 20 Committee

Mr. Eduardo Galván
Interim Superintendent

Five Priorities for Success



Strategic Plan Driving Our Mission



Strategic Plan Driving Our Mission:

MPS is a diverse district that welcomes all students and prepares them for success in higher education, post-education opportunities, work, and citizenship.

District Requirements Under Act 20

- **Reading curriculum aligned to Act 20**
- **Training in science-based early literacy instruction**
- **Assessments**
- **Personal reading plans for identified students**
- **Required family notifications and promotion policy**
- **Reading interventions for students**
- **Data collection and reporting**

Reading Curriculum Aligned to Act 20



Systemic and Explicit Instruction in..											
Curriculum	Phonological Awareness	Phonemic Awareness	Phonics	Reading Fluency	Oral Language	Background Knowledge	Writing	Vocabulary	Comprehension	Prohibition of MSV	
<i>Into Reading, National V2</i> (Houghton Mifflin Harcourt, 2020)	K-3	K-3	K-3	K-3	K-3	K-3	K-3	K-3	K-3	K-3	Approved
<i>Just Right Reader Decodables</i> (Just Right Reader, 2021-2023)			K-3							K-3	
<i>Kindercorner</i> (2nd ed., 2016.); & <i>Reading Roots</i> (5th ed., 2021); <i>Reading Wings</i> (4th ed., 2016) (Success for All Foundation Inc.)	K-1	K-1	K-1		K-3			K-3		K-3	
<i>Lindamood Bell Learning Processes</i> (Gander Publishing, 2001-2022)	K-3	K-3	K-3	K-3	K-3			K-3	K-3	K-3	
<i>Magnetic Reading</i> (Curriculum Associates, 2023)	K-1	K-1	K-2	K-2						K-3	
<i>myView Literacy Elem. Reading Curriculum</i> (Savvas Learning Company, 2025)	K-3	K-3	K-3	K-3	K-3	K-3	K-3	K-3	K-3	K-3	Approved
<i>OnTrack Reading Phonics Program Workbook</i> (OnTrack Reading, 2001- 2023); <i>Instructional Manual</i> (OnTrack Reading, 2004-2023)		K-3	K-3							K-3	
<i>Open Court</i> (McGraw-Hill, 2023)	K-3	K-3	K-3	K-3	K-3	K-3	K-3	K-3	K-3	K-3	Approved
<i>Orton-Gillingham Plus</i> (IMSE, 2022) Supplemental	K-3	K-3	K-3	K-3			K-3	K-3		K-3	
<i>Raz-Plus</i> (Learning A-Z, 2017)	K-2	K-1	K-2		K-3					K-3	

Training in Science-based Early Literacy Instruction

What the Law Requires

By July 1, 2025, all individuals employed as kindergarten through third grade teachers, including reading teachers, special education teachers, and teachers of multilingual learners, **will need to begin** receiving specific professional development training in science-based reading instruction.

To meet this professional development requirement, Milwaukee Public Schools has chosen Language Essentials for Teachers of Reading and Spelling (LETRS).



Assessments

A single reading readiness screener will be administered to Wisconsin students enrolled in public school districts and independent charter schools in K4 through grade 3 beginning in the 2024–25 school year.



Personal Reading Plans for Identified Students

Any child in kindergarten through third grade who scores below the 25th percentile on the reading readiness screener must receive a personal reading plan.



Required Family Notifications and Promotion Policy

Beginning in the 2024–25 school year, parents and families must be provided with results of the reading readiness screener in an understandable format no later than 15 days after the assessment is scored.



Reading Interventions for Students

Act 20 requires schools to provide reading interventions for K5 to third grade students identified as “at risk” on a universal screening assessment or diagnostic assessment.



Data Collection and Reporting

By July 15, 2025, MPS must report the following to DPI:

Number of students...

- identified as “at risk” on both the screener and the diagnostic assessments,
- who received reading interventions,
- who received a personal reading plan,
- who exited reading interventions,
- for whom a special education referral was made based on the diagnostic reading assessment.



**MILWAUKEE
PUBLIC SCHOOLS**

**Thank
You!**