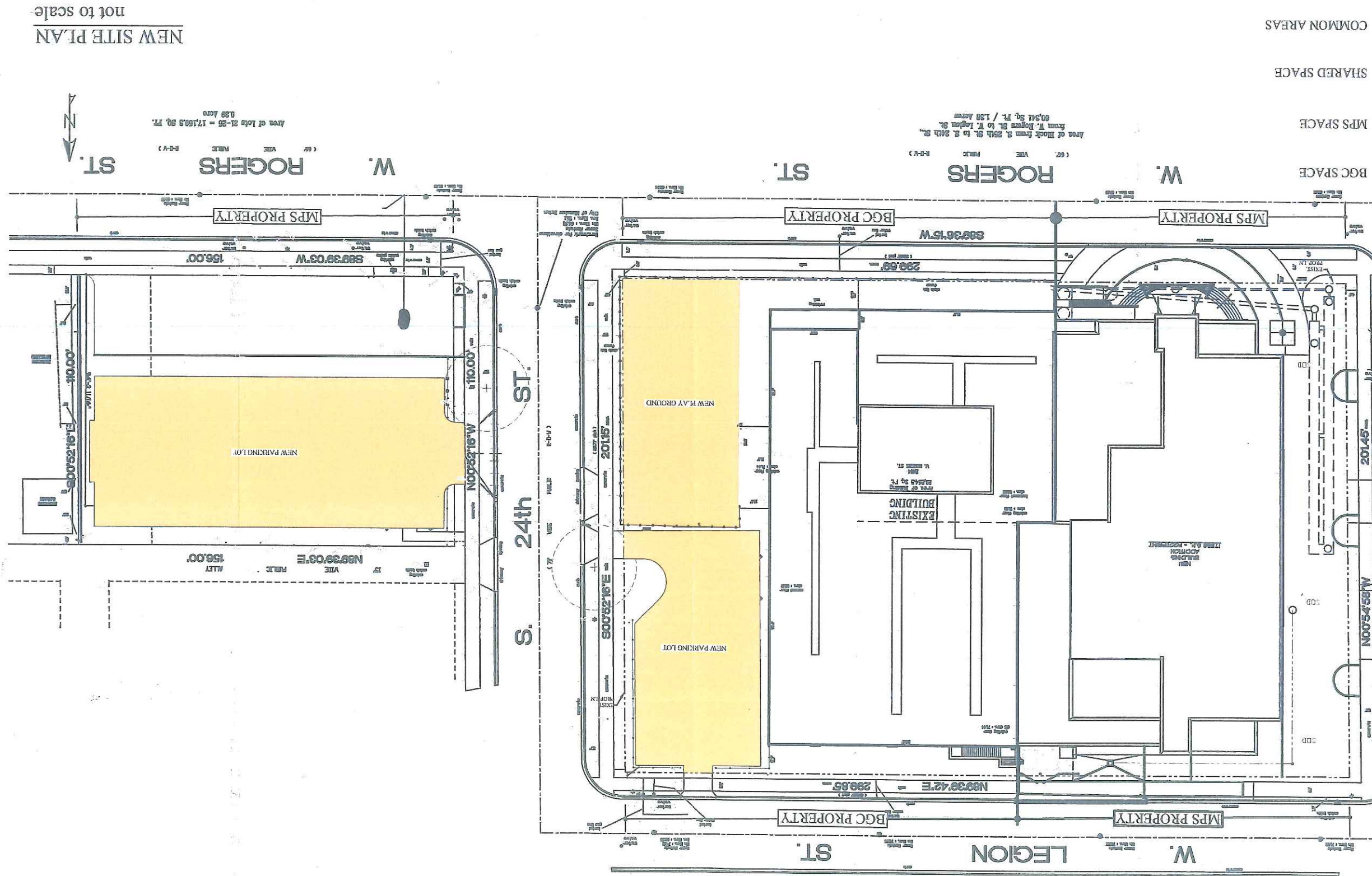
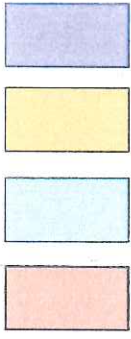


Attachment 1
Schematic Plan



NEW SITE PLAN
not to scale



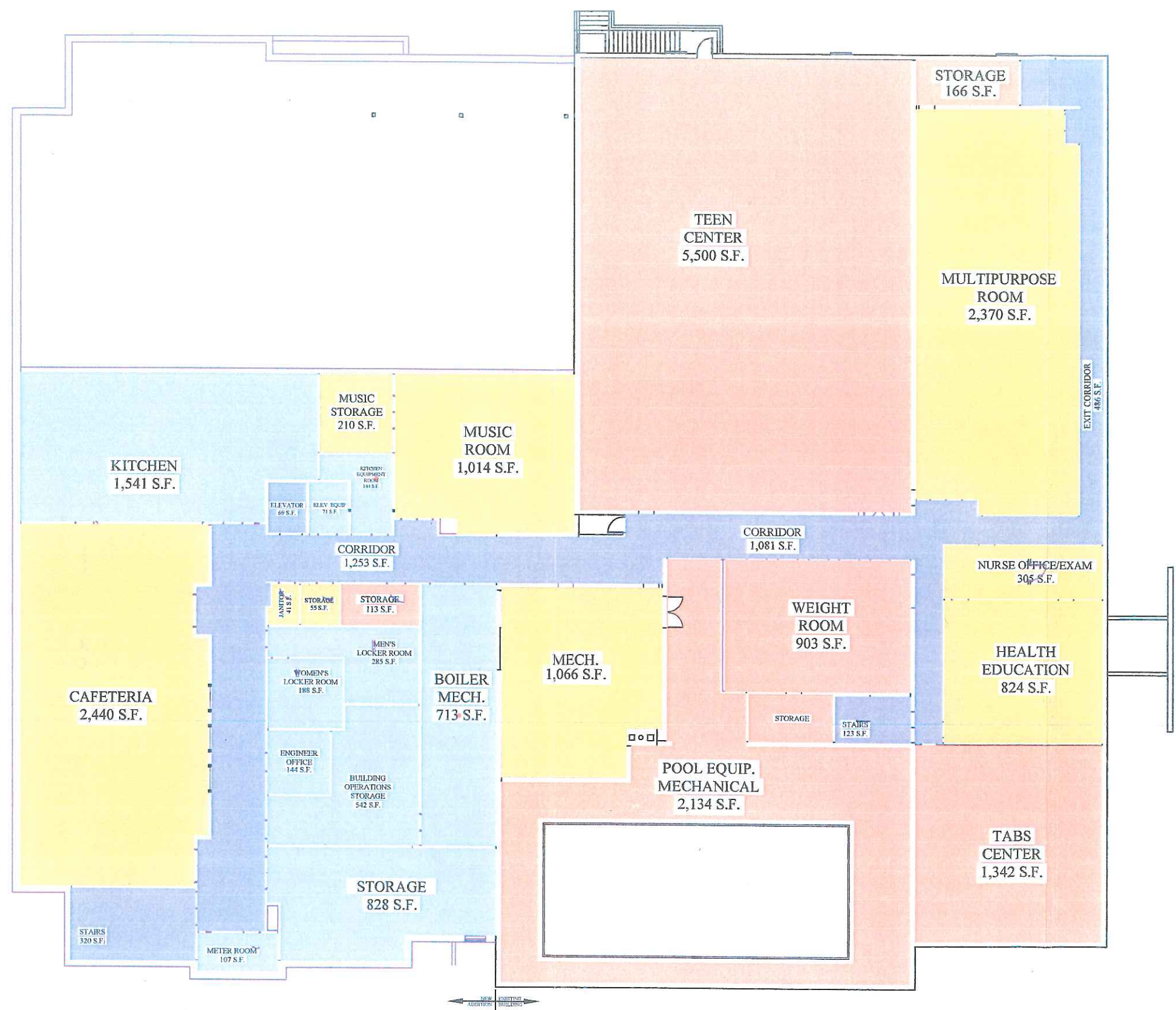
Irving Seher K-5 School Addition
to Existing Boys & Girls Club Facility
Schematic Space Designation Plan

DATE: May 14, 2004

BMR
DESIGN GROUP, INC.
Architects - Engineers
503 West Lincoln Avenue
Milwaukee, Wisconsin 53207
Phone - (414) 384-2996
Fax - (414) 384-3904

**Irving Seher K-5 School Addition
 to Existing Boys & Girls Club Facility**
 Schematic Space Designation Plan

- BGC SPACE
- MPS SPACE
- SHARED SPACE
- COMMON AREAS

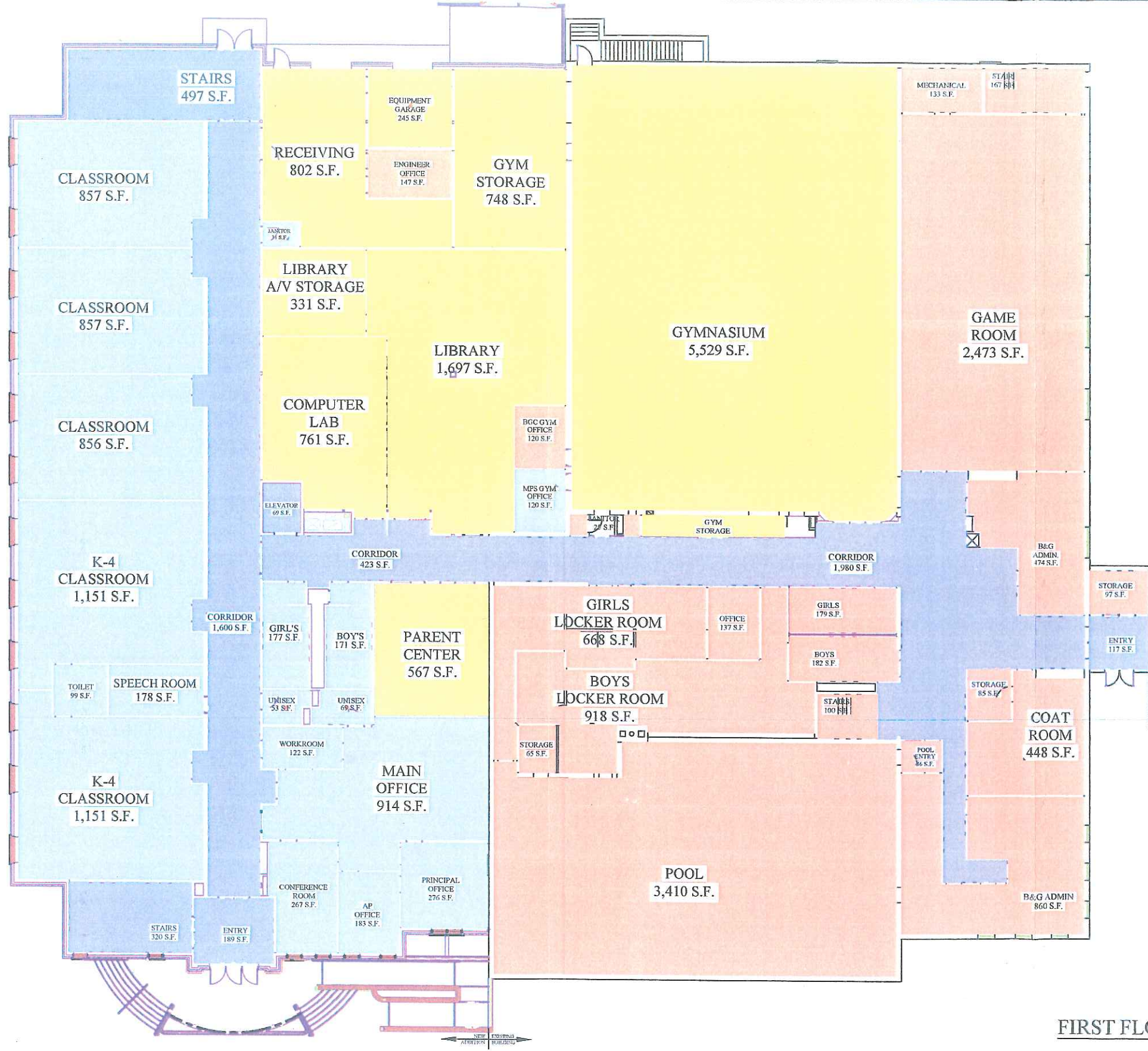


BASEMENT FLOOR PLAN
 not to scale



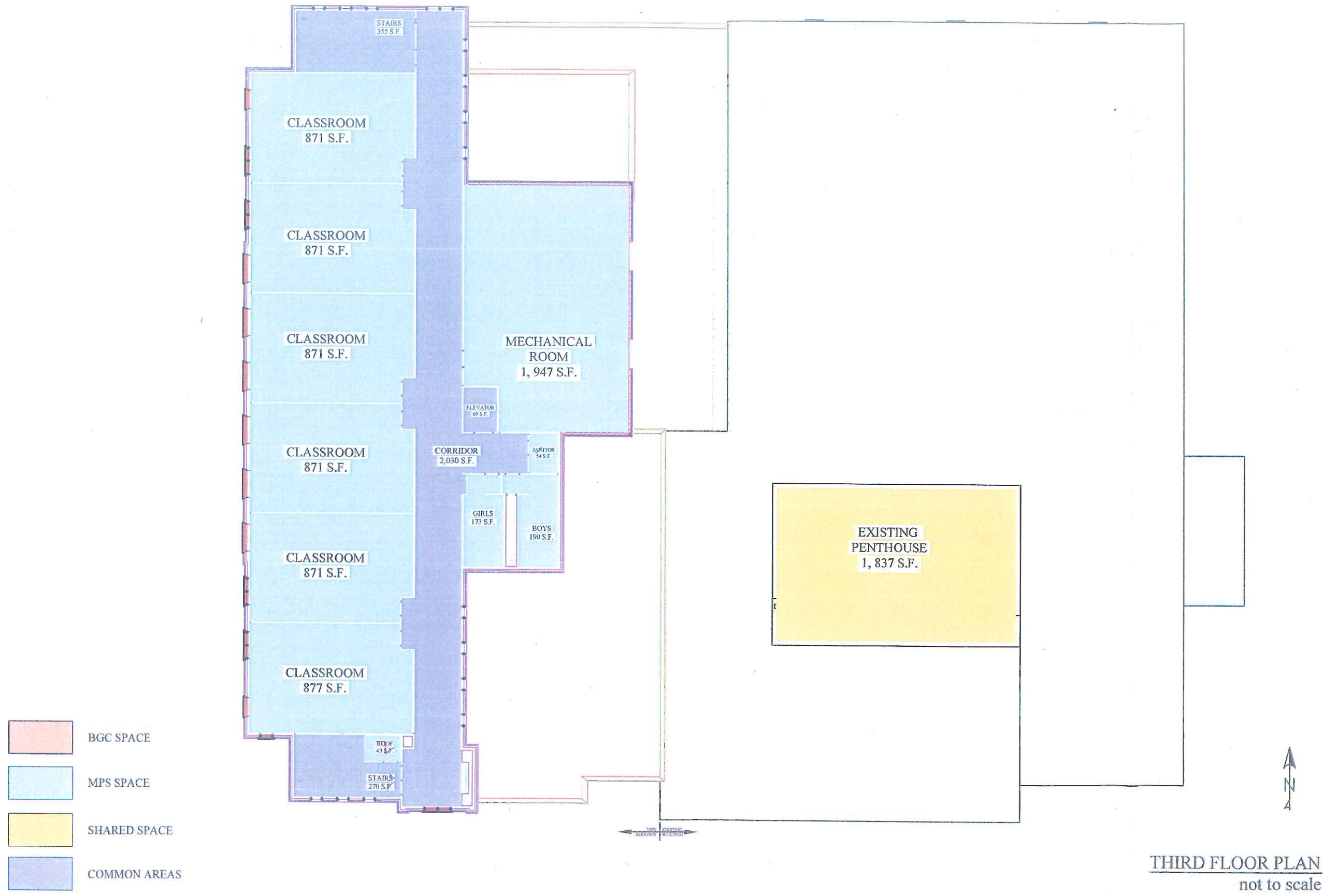
**Irving Seher K-5 School Addition
to Existing Boys & Girls Club Facility**
Schematic Space Designation Plan

- BGC SPACE
- MPS SPACE
- SHARED SPACE
- COMMON AREAS



FIRST FLOOR PLAN
not to scale

**Irving Seher K-5 School Addition
to Existing Boys & Girls Club Facility**
Schematic Space Designation Plan



- BGC SPACE
- MPS SPACE
- SHARED SPACE
- COMMON AREAS

THIRD FLOOR PLAN
not to scale