



**MILWAUKEE**  
PUBLIC SCHOOLS

# **FY25 Department of Business Services**

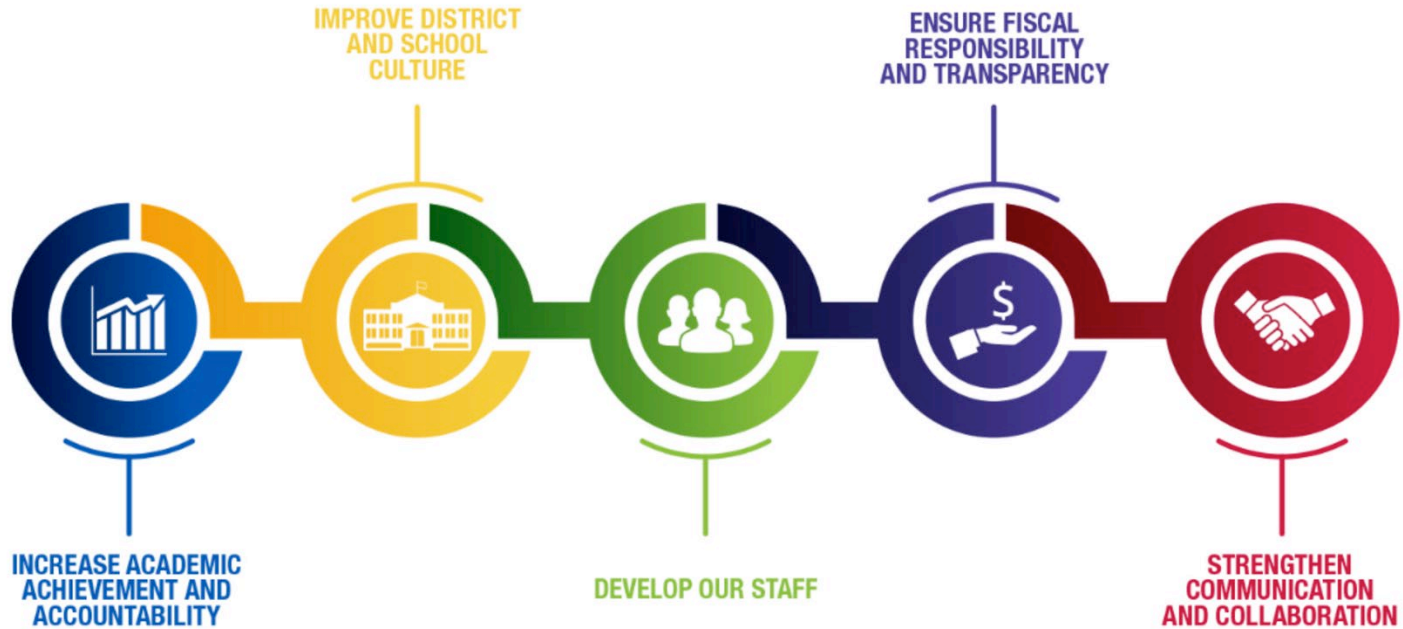
## **Bell Schedule Re-tiering Presentation**

### *Presenters*

David Fifarek

Office of School  
Administration

# *Five Priorities for Success*



# Problem of Practice

---

## Problem Statement:

The current bus schedule and the time allotted between bus tiers are insufficient to ensure timely student arrival between Tiers I and II, thus creating compression issues with Tier III.

- FY21 Bell Schedule as adopted has had modifications since due to increased High School Minute needs and K5 school day modification, impacting ability to effectively tier.

## Desired Outcome:

To increase on-time arrival and minimize disruptions to instruction by optimizing the bus schedule and implementing effective strategies alleviating compression issues.

# 2025 Bell Schedule Proposal

Models	Current Three Tier Model	Proposed Three Tier Model
Tiers Schedules	<b>Tier 1:</b> 6:40a– <del>7:25a</del> / <del>2:10p</del> –3:00p K5 Tier 1: 6:40a– <del>7:25a</del> / <del>2:25p</del> –3:00p K8  <b>Tier 2:</b> 7:40a– <del>8:00a</del> / <del>3:25p</del> –4:00p  <b>Tier 3:</b> 8:30a– <del>9:05a</del> / <del>4:15p</del> –4:50p Trad MS Tier 3: 8:35a– <del>9:10a</del> / <del>4:10p</del> –4:45p K8 Tier 3: 8:40a– <del>9:15a</del> / <del>4:00p</del> –4:40p K5	<b>Tier 1:</b> 6:40a– <del>7:15a</del> / <del>2:00p</del> –3:00p K5 Tier 1: 6:40a– <del>7:15a</del> / <del>2:15p</del> –3:00p K8  <b>Tier 2:</b> 7:40a– <del>8:00a</del> / <del>3:25p</del> –4:00p  <b>Tier 3:</b> 8:30a– <del>9:05a</del> / <del>4:15p</del> –4:50p Trad MS Tier 3: 8:35a– <del>9:10a</del> / <del>4:10p</del> –4:45p K8 Tier 3: 8:40a– <del>9:15a</del> / <del>4:00p</del> –4:40p K5
Cost / Savings	Approximately \$68,000,000	Approximately \$68,000,000
Buses	550 yellow 90 HSV	550 yellow 90 HSV
Routes	1,800 yellow 270 HSV	1,800 yellow 270 HSV
Drivers	700	700
Contractors	8 yellow 9 HSV	8 yellow 9 HSV
Average route	9.25 miles	9.25 miles
Average route time	39 minutes	39 minutes

# FY26 Proposed Bell Schedule Modifications

Tier I	Current Pick-Up/School Arrival (10 minutes prior/after instructional bell)	Current Teacher Workday	Current School Bell/Instruction Begins (DPI Required Minutes)	FY26 Pick-Up/School Arrival (10 minutes prior/after instructional bell)	FY26 Teacher Workday	FY26 School Bell/Instruction Begins (DPI Required Minutes)
K5 - Tier I:	6:40a– <del>7:15a</del> /2:20p–3:00p	7:20a - 2:15p	7:25a - 2:10p	6:30a – <del>7:05a</del> /2:10p-2:50p	7:10a - 2:05p	7:15a - 2:00p
K8 - Tier I	6:40a– <del>7:15a</del> /2:35p–3:15p	7:20a - 2:30p	7:25a - 2:25p	6:30a – <del>7:05a</del> /2:25p-3:05p	7:10a - 2:20p	7:15a - 2:15p

# Rationale

---

- Tiering compression is current state in FY25 and creates late buses due to inadequate spacing /timing between bell schedules.
- High Schools added 5 minutes for scanners and 5 minutes for hallway travel after three-tier rollout contributing to inadequate spacing between tiers.
  - 8:00-3:20p was expectation with 3 tier rollout – lost 10 minutes since.
- Bell Schedule adjustment was made for K5 schools after three-tier rollout in 2020 contributing to inadequate spacing between tiers.
  - K5 schools bell schedule was reduced by 15 minutes complying with DPI minute requirements.
- 35-40 minute routes between tiers for current framework is required
  - Current model has 20 minutes expectations in many instances (7:35a pull from 1st tier/7:55a arrival at 2<sup>nd</sup> tier).
- **Shift in First-Tier bell schedule being requested will dramatically improve timely AM bus arrival and increase student achievement and does not increase teacher workday.**



**MILWAUKEE**  
PUBLIC SCHOOLS

*Questions?*