



MILWAUKEE
PUBLIC SCHOOLS

Enhancing Educational Communities and School Climate

January 14, 2025

Mr. Eduardo Galván
Interim Superintendent



MILWAUKEE
PUBLIC SCHOOLS

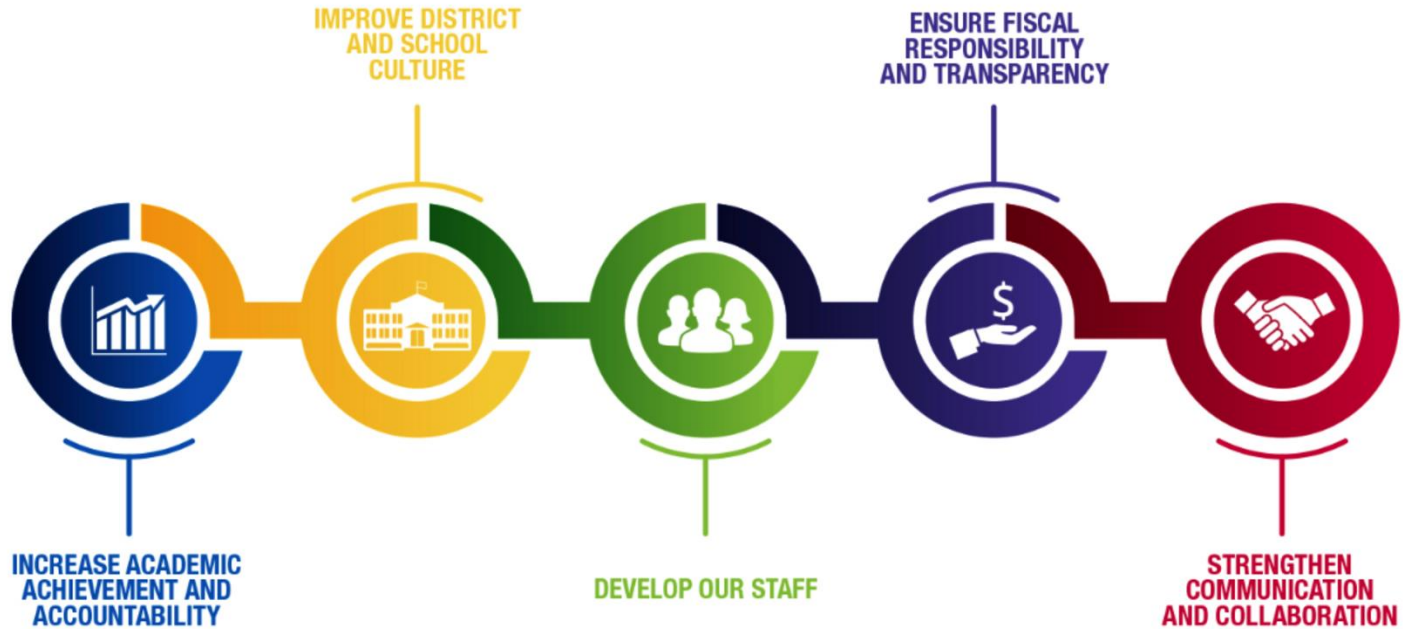
Enhancing Educational Communities and School Climate

Presenters

Jon Jagemann
District Discipline Manager

Alonzo Fuller
Principal James Madison
Academic Campus (JMAC)

Five Priorities for Success



Committee Members and Constituent Inquiries

- Efforts to support 9th grade students
- Progress with Continuous School Improvement Plans
- Courageous Conversations About Race (CCAR) and District Equity Leadership Team (DELT)
- Equitably supporting identified schools
- Topics discussed within Student Discipline Committees
- Specific best practices lowering suspensions
- Re-entry of students

James Madison Demographics

- 556 students enrolled
- Principal Alonzo Fuller
- Student demographics
 - 86.5% Black
 - 5.2% Hispanic/Latino
 - 2.7% multiple races
 - 4.0% Asian
 - 1.6% other races
- Suspensions down 33% year-to-date



James Madison Shared Leadership

- Community School Youth Council (CSYC)
- Unified Learning Team
- Common Planning Time for Professional Learning Communities (PLC)
- Community School Leadership Team



James Madison Cultural Relevance

- Prioritize positive and professional staff and student relationships
- Provide a nurturing, safe, and academically rigorous environment for students to become future ready
- Provide a welcoming classroom environment and culture
- Create professional opportunities for students through internships

James Madison Academic Pathways

- Hospitality/Tourism
- Health Science
- Career exploration and internship opportunities
- Family-centered celebrations to create a unified community
- ACT boot camp and multi-state college tours



**MILWAUKEE
PUBLIC SCHOOLS**

**Thank
You!**