



**MILWAUKEE  
PUBLIC SCHOOLS**

# Strategic Partnerships and Volunteer Engagement Report

**11-12-24**

**Eduardo Galván  
Interim Superintendent**



**MILWAUKEE  
PUBLIC SCHOOLS**

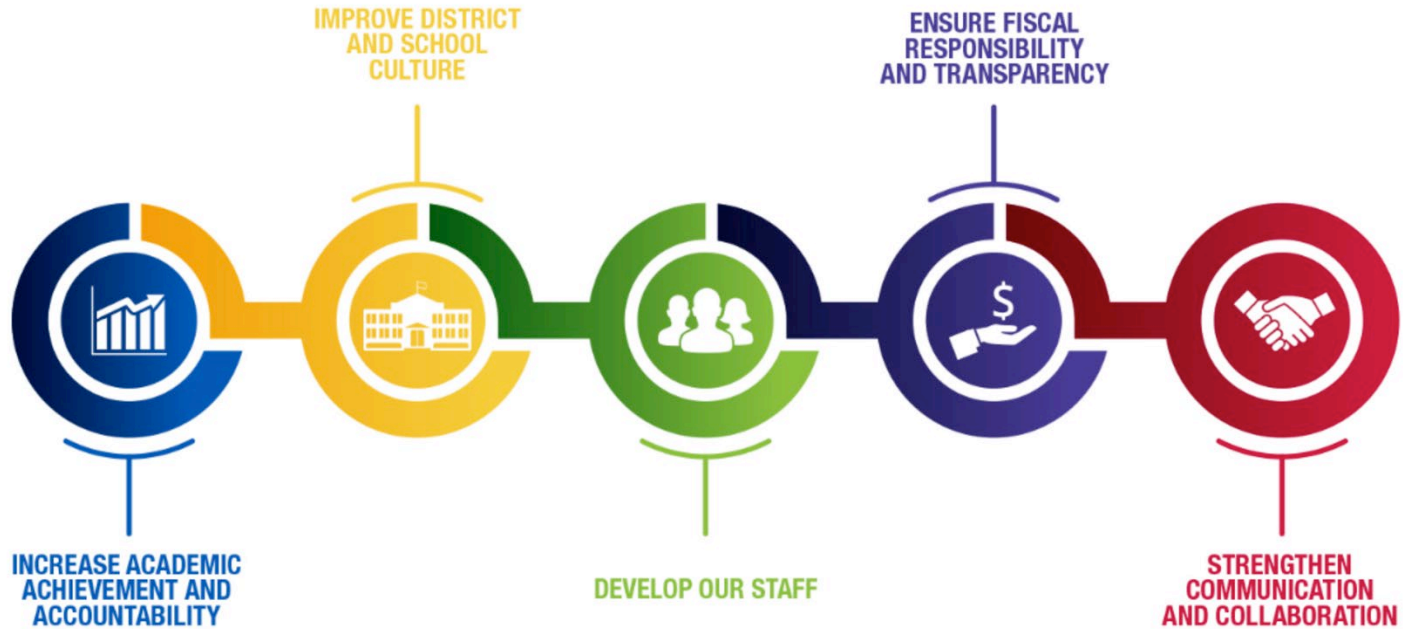
## *Presenters*

**Christy Stone, Director**

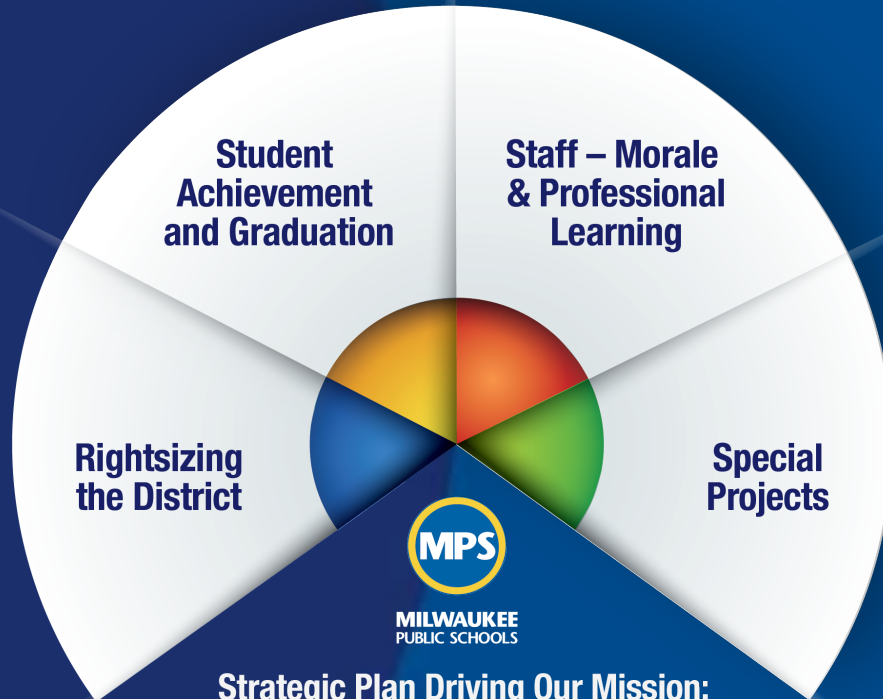
**Tamara Martinsek, Volunteer  
Services Associate**

**Department of Strategic  
Partnerships & Customer  
Service**

# *Five Priorities for Success*



# *Strategic Plan Driving Our Mission*



## **Strategic Plan Driving Our Mission:**

MPS is a diverse district that welcomes all students and prepares them for success in higher education, post-education opportunities, work, and citizenship.

# Volunteer Services, Customer Service, and Partnerships

- Volunteer Services Update
- Customer Service Training
- Partnership Updates
  - Service Days
  - Adopt a School Programs
- Donation Updates
  - School Supply Drive
  - Book Donations





# Overview of Volunteer Services

- Over 3000 registered volunteers in our database
- More than 590,000 hours of service delivered during the 2023/24 school year
- All volunteers working in the district go through an application process, a background check, and training
- Volunteers consists of family members, community members, retired teachers, MKE-REC coaches, college students and corporate groups
- The Parent Coordinators in each school manage their volunteer teams
- Annual “Most Valuable Volunteer” Award



# Corporate Volunteer Services

- College and Corporate Service Programs Offered By:

- UWM
- Marquette
- Secure Futures
- Junior Achievement
- Boys and Girls Club
- Big Brothers Big Sisters



- Group Volunteers for In-School Events Offered By:

- Goodwill
- Medical College Radiology Residents
- Kohl's
- Sigma Lambda Gamma National Sorority Inc. (Marquette)



# Customer Service Training

- Introduction to Customer Service:
  - Virtual and In-Person Sessions
  - Student Services
  - Office Secretaries
  - School Bookkeepers
  - Various District Staff
- In the Works:
  - Conflict Resolution
  - Advanced Customer Service





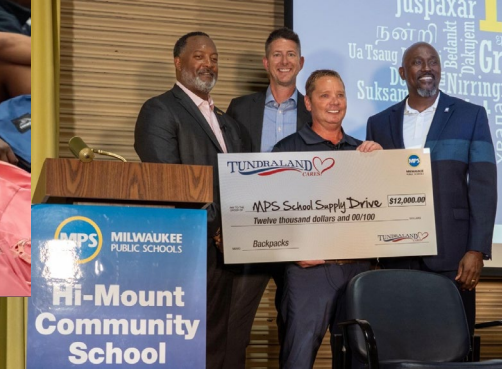
# Partnerships

- Adopt-a-School programs
  - PKWARE - Allen Field School
  - Stillwater Church - Hampton School
- Service Days
  - GE Healthcare – 29<sup>th</sup> Annual Event
  - CarMax/Points of Light
  - In the Works:
    - Marquette University High School
    - Betty Brinn Museum



# Supply Drives

- School Supply Drive
  - Benefitted over 60 schools
  - Large Partnerships
    - GermanFest
    - Salvation Army/WISN
    - Sleepover for Education
    - Tundraland
    - AT&T
    - AJ Bombers
    - Auer Steel
- Mitten Drive
- Hygiene Drive





**MILWAUKEE  
PUBLIC SCHOOLS**

**Thank  
You!**