

Regional Showcase - Central Region

February 11, 2021



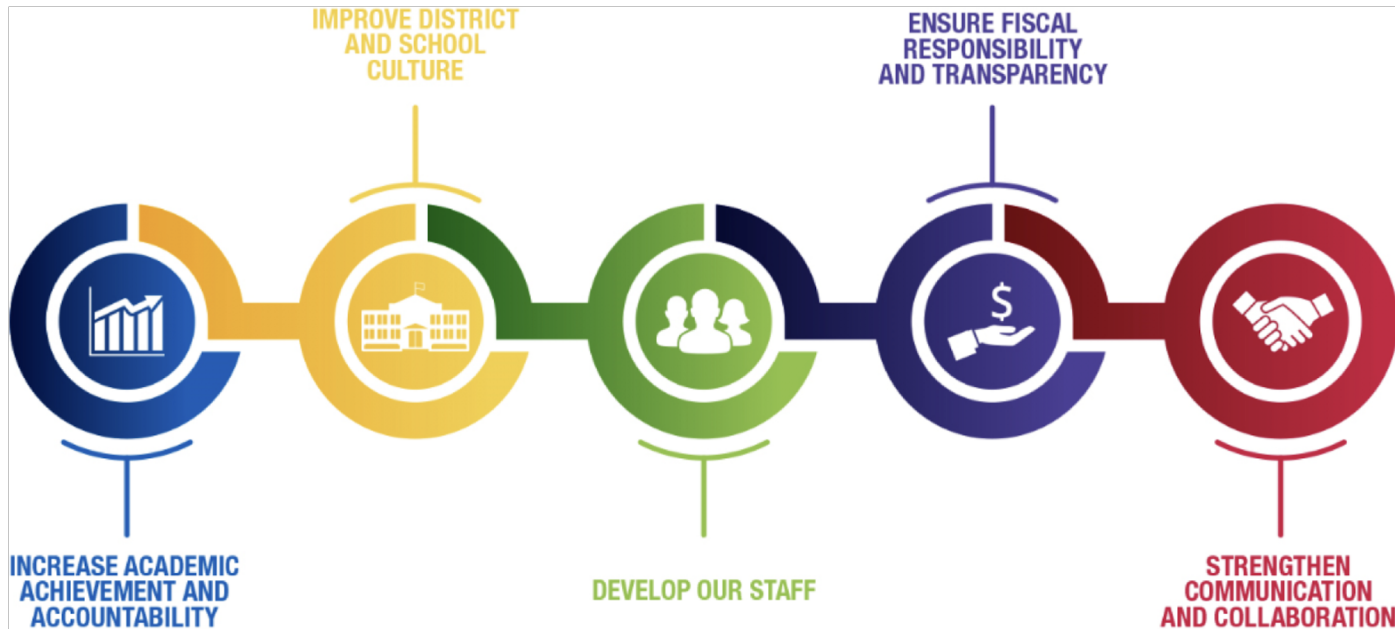
MILWAUKEE
PUBLIC SCHOOLS

Presenters:

Dr. Carletta Noland, Regional Superintendent, Office of School Administration
Ms. Paulette Chambers, Principal, Mary McLeod Bethune Elementary School

Dr. Keith P. Posley, *Superintendent*

Five Priorities for Success



Central Region Schools

K-5 Neighborhood	K-8 Neighborhood	Academic Specialty	Community Schools
<ul style="list-style-type: none"> • Samuel Clemens • Gwen T. Jackson • Neeskara • Keefe Avenue 	<ul style="list-style-type: none"> • Mary McLeod Bethune • Luther Burbank • Clarke Street • Fifty-Third Street • Benjamin Franklin • Hi-Mount Community School • Robert M. LaFollette • Ralph H. Metcalfe School • Starms Discovery Learning Center • Story Elementary 	<ul style="list-style-type: none"> • LLOYD Barbee - (K-6 Montessori) • Hawley (K-5-Environmental) • Grant Gordon (Early Childhood) • Starms EC (Early Childhood) • Milwaukee French Immersion (K-5) • Sherman Multicultural Arts (Turnaround Arts K-8) • Marvin Pratt (K-5 Primary Years IB Candidate School) 	<p>Auer Avenue (K-5) Hopkins-LLOYD (K-8) Westside Academy (K-5)</p>

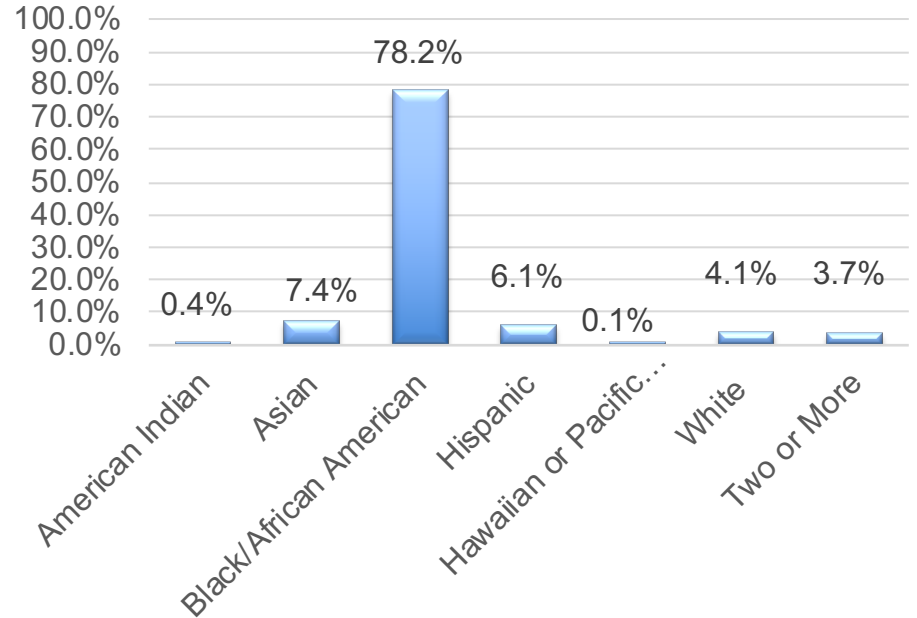


Central Region Demographics



2020-2021

- 7,284 students
- 24 schools
- 6.4% English language learners
- 20.6% students with disabilities
- 91.7% economically disadvantaged



Central Region

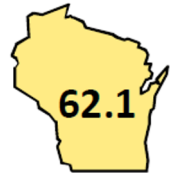
Overall Score



Significantly Exceeds Expectations^

Marvin Pratt Elementary 92.2

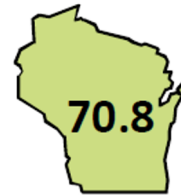
Overall Score



Meets Few Expectations

Metcalfe Elementary	62.1
Hawley Environmental School	61.7
Hopkins Lloyd Community School	61.0
Franklin Elementary	60.6
Fifty-Third Elementary	59.6
LaFollette Elementary	59.3
Hi-Mount Elementary	58.9
Story Elementary	57.0
Auer Avenue Elementary	56.0
Clarke Street Elementary	55.4
Westside Academy	54.4
Barbee Elementary	54.0

Overall Score



Meets Expectations

Milwaukee French Immersion	70.8
Clemens Elementary	70.4
Burbank Elementary	69.0
Bethune Academy	65.3
Starms Elementary	63.8
Neeskara Elementary	63.3

Overall Score



Fails to Meet Expectations

Sherman Elementary	51.8
Keefe Avenue Elementary	51.2
Jackson Elementary	48.1

Mary McLeod Bethune Academy



Vision Statement

At Mary McLeod Bethune Academy, we strive to be a K-8 school that is highly regarded for its academic excellence, by producing major gains in student achievement and actively serving and improving the community in which it operates.



Not for myself, but for others...

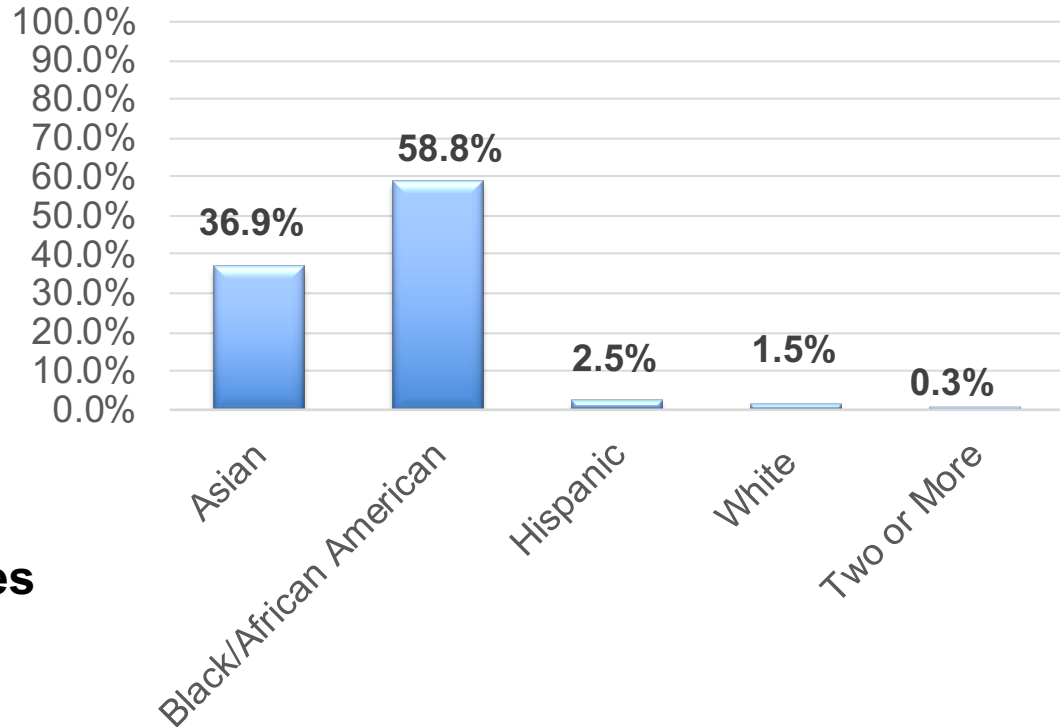
-Mary McLeod Bethune-

Bethune Academy Demographics

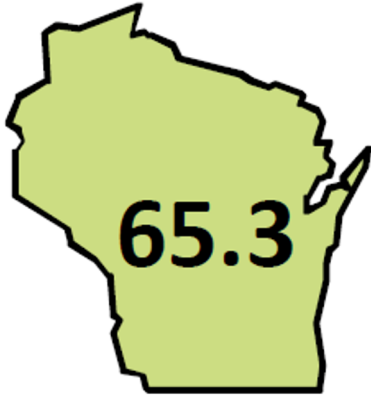


2020-2021

- **612 students**
- **34.3% English language learners**
- **19.3% students with disabilities**
- **97.5% economically disadvantaged**



Academic Success



Meets Expectations

2018-2019

Exceeding State Performance 2018 – 2019		
	Bethune	State
School Growth	69.8/100	66/100
ELA Growth	38.7/50	33/50
Closing Gaps	78.7/100	73.9/100
ELA Achievement Gaps	40.6/50	37.2/50
Math Achievement Gaps	38.1/50	36.7/50

Safe and Supportive Culture

- Safety First
- Teamwork
- PBIS (Positive Behavior Intervention Supports)
- SEL (Social Emotional Support)
- Sports Program
- Awards and Recognition
- Wildcat Pride
- CLC (Community Learning Center)



Committed Staff

Staff Attendance 92% staff attendance Rate

Teaching Experience 67% of our Teaching staff have at least 1 Master's Degree

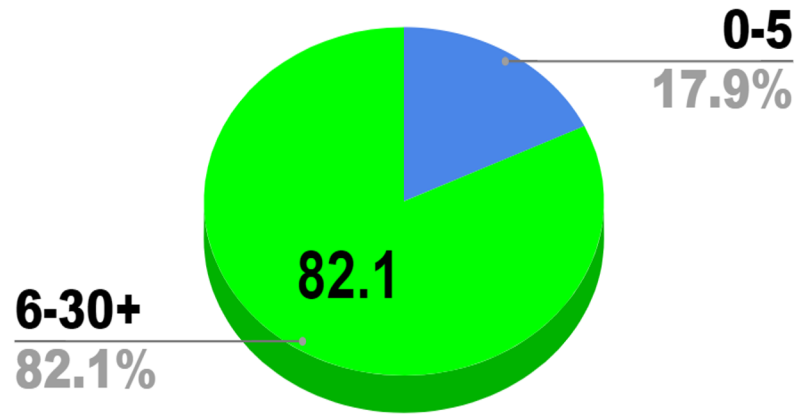
Teacher Retention 78% of our staff have been at Bethune at least 6 years.

Staff Volunteers 80% of our staff volunteer for monthly Family Events

Translators On-site staff speaking *Karen*, *Hmong*, *Spanish* and *Chinese* (28% of students speak Karen; 5% of students speak Hmong; 3% of students speak other languages)

Committed to Giving In the last 3 years an average of 60 (85%) staff have contributed over \$23,000 to the MPS United Way Combined Giving Campaign.

Years of Teaching Experience



Engaging Families with Community



**Bethune Academy
Traffic Safety
Community Walk**

September 15th
3:00 - 4:00 PM

Meets @ the School West Entrance
Teachers, Students, Parents, and Neighbors Welcome!
Rain Date: Sept. 22nd milwaukee.gov/SRTS_BethuneAcademy



**SOCIAL
EMOTIONAL
LEARNING**



ESL



**Children's
Hospital of Wisconsin**



**BLOODCENTER
of WISCONSIN™**



**MILWAUKEE
PUBLIC LIBRARY**



Nexts Steps

- After hours online support for students
- Increasing State Report Card from Meets to Exceeds
- Professional development to build capacity of all staff in formal coaching conversations
- Promoting family agency through learning opportunities in the areas of wellness, financial literacy, personal and entrepreneurial ownership and community citizenship



Thank you.



Dr. Keith P. Posley, *Superintendent*

© 2021 Milwaukee Public Schools • 13