

# Report with Possible Action on Universal Screening



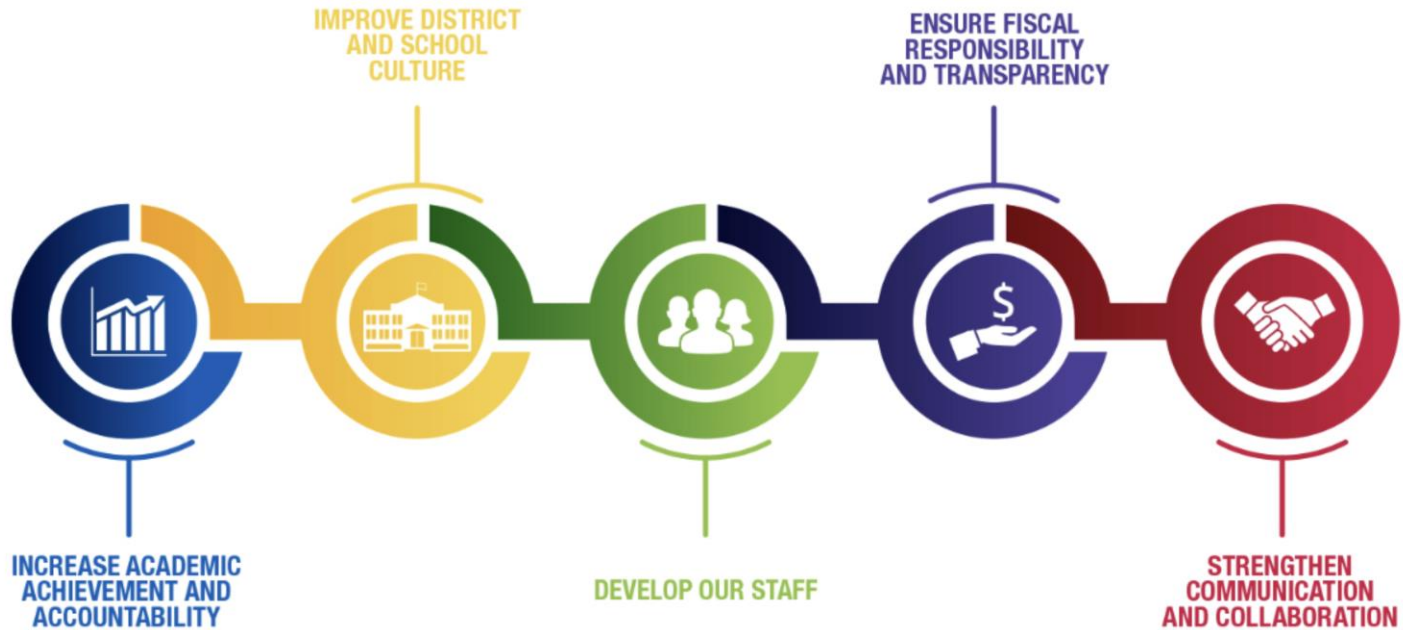
March 10, 2022

**MILWAUKEE**  
PUBLIC SCHOOLS

**Presenters:** Melanie R. Stewart, Ph.D., Director Research, Assessment and Data

Dr. Keith P. Posley,  
Superintendent

# Five Priorities for Success



# The Data

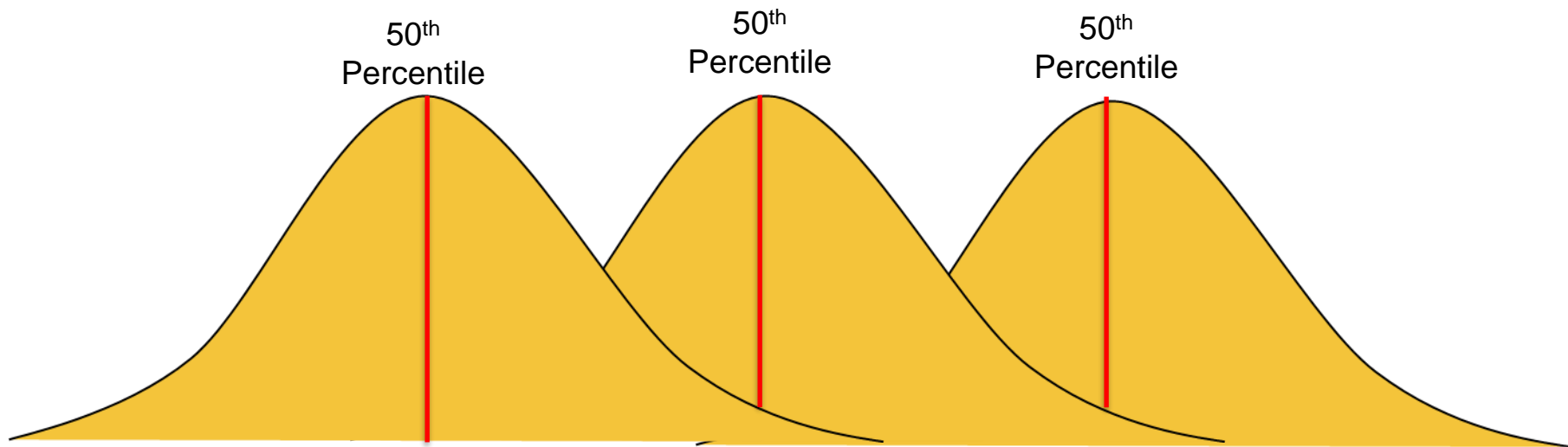
---

- This data is a combination of results in English and Spanish Star Assessments.
- Growth in the percentage of on-target students shows gap closing growth
- 2018-19 data is the last full year of data we can use for comparison.



# Background on Growth

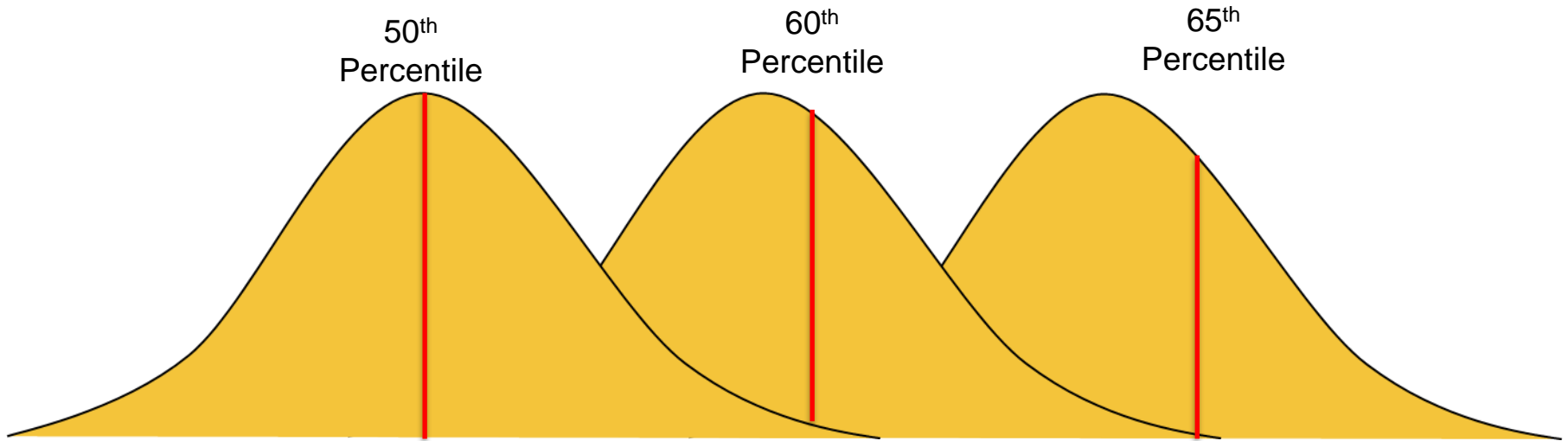
---



A student is learning throughout the school year. This is expected growth. If a student assesses at the 50<sup>th</sup> percentile in fall, winter and spring, then this child has average growth over the school year.

# Background on Growth

---



If a student is learning at a rate that is accelerated, then this results in “gap closing” growth.

# Benchmarks for Star

## Star Early Literacy and Star Reading

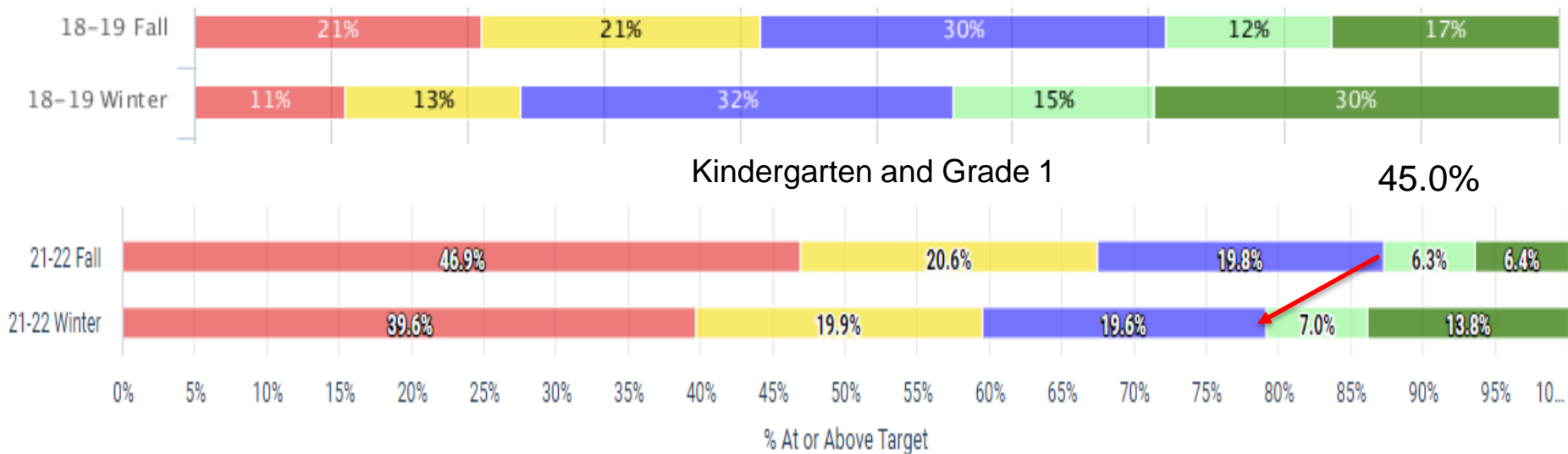
Performance Category	Percentile Rank Ranges in 2021-22 school year	Predicts to WI Forward and ACT Suite
Significantly Below Target	1–10	Below Basic
Well Below Target	11–25	
Below Target	26–59	Basic
On Target	60–74	Proficient and Above
Significantly Above Target	75 and up	

## Star Math

Performance Category	Percentile Rank Ranges in 2021-22 school year	Predicts to WI Forward and ACT Suite
Significantly Below Target	1–10	Below Basic
Well Below Target	11–39	
Below Target	40–74	Basic
At or Above Target	75 and up	Proficient and Above



# Early Literacy

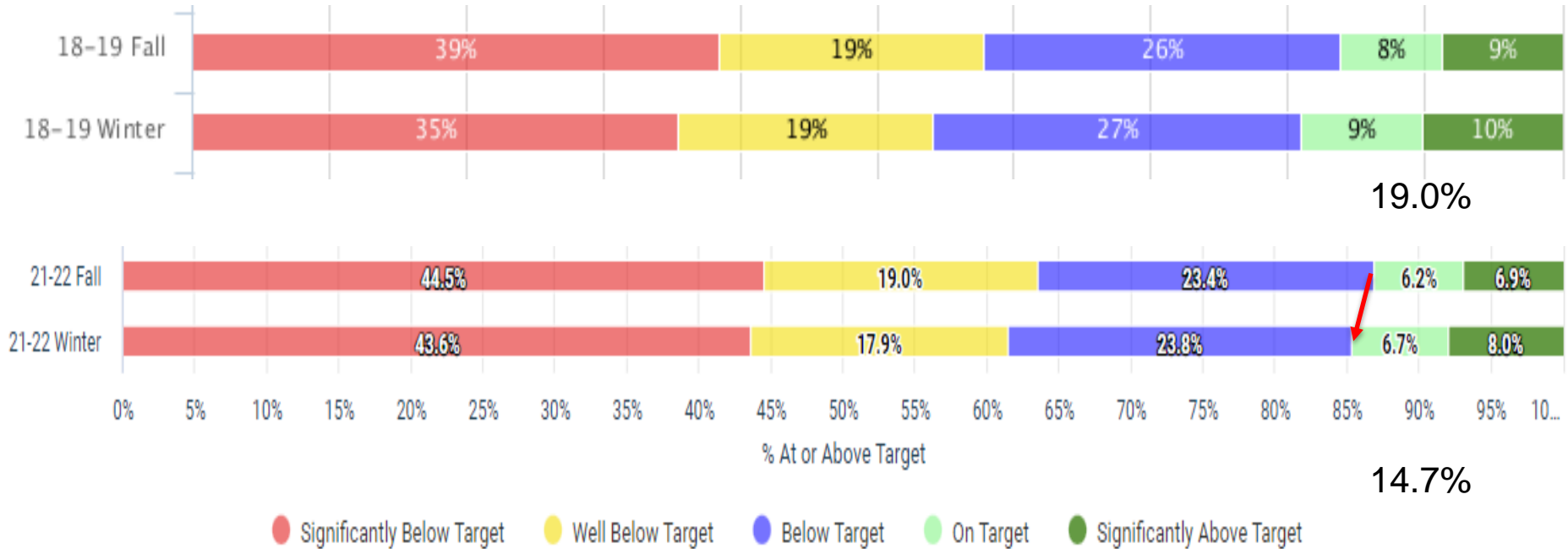


● Significantly Below Target  
 ● Well Below Target  
 ● Below Target  
 ● On Target  
 ● Significantly Above Target

Grade 1

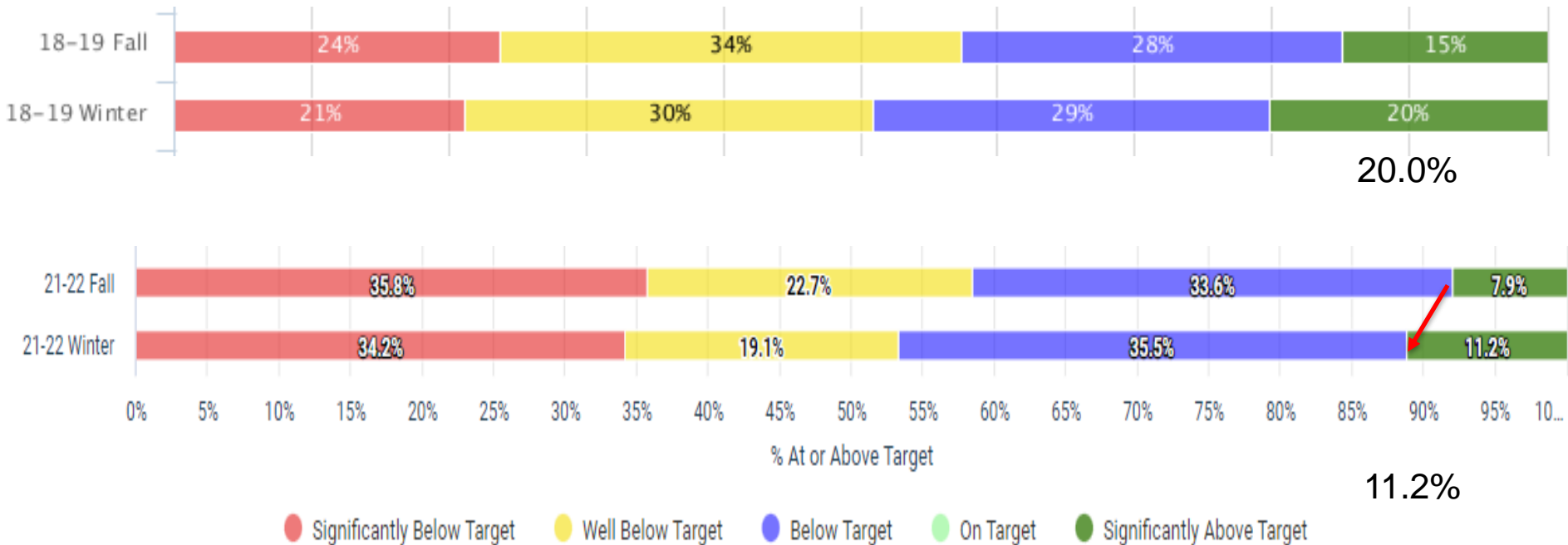


# Reading



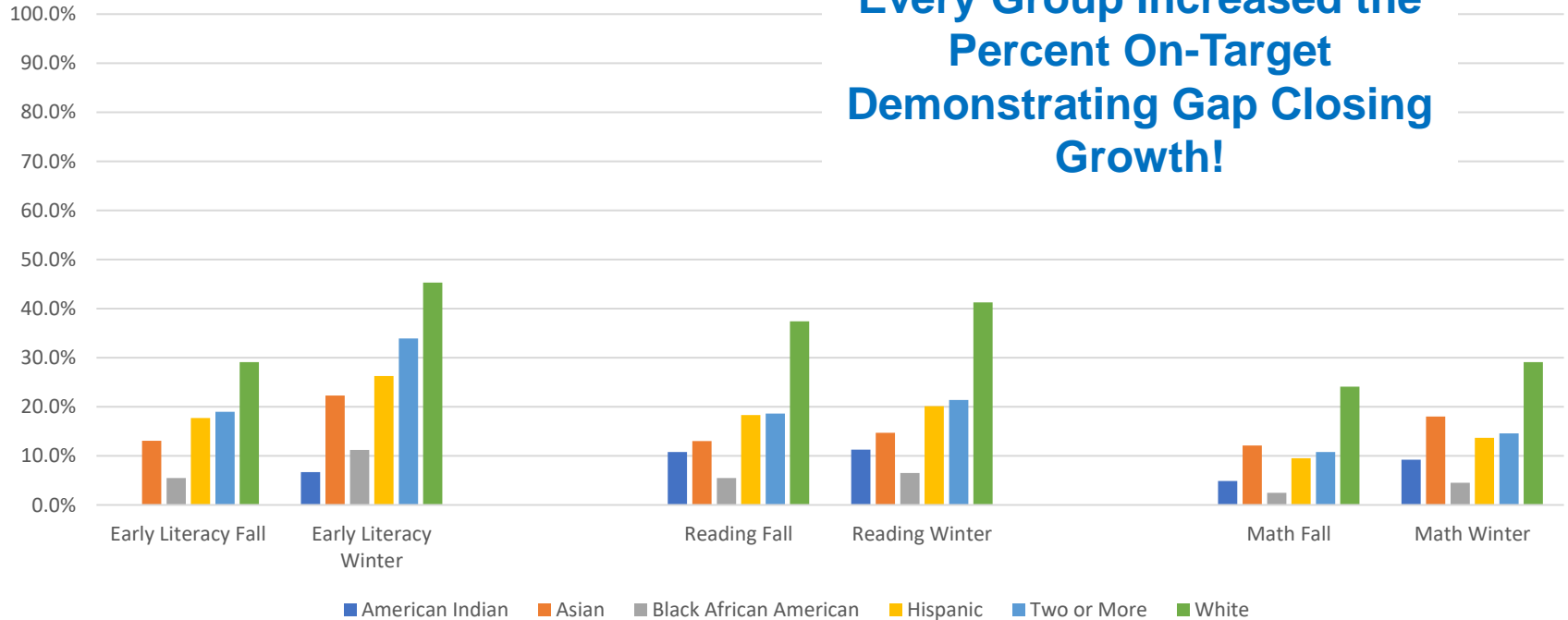


# Math



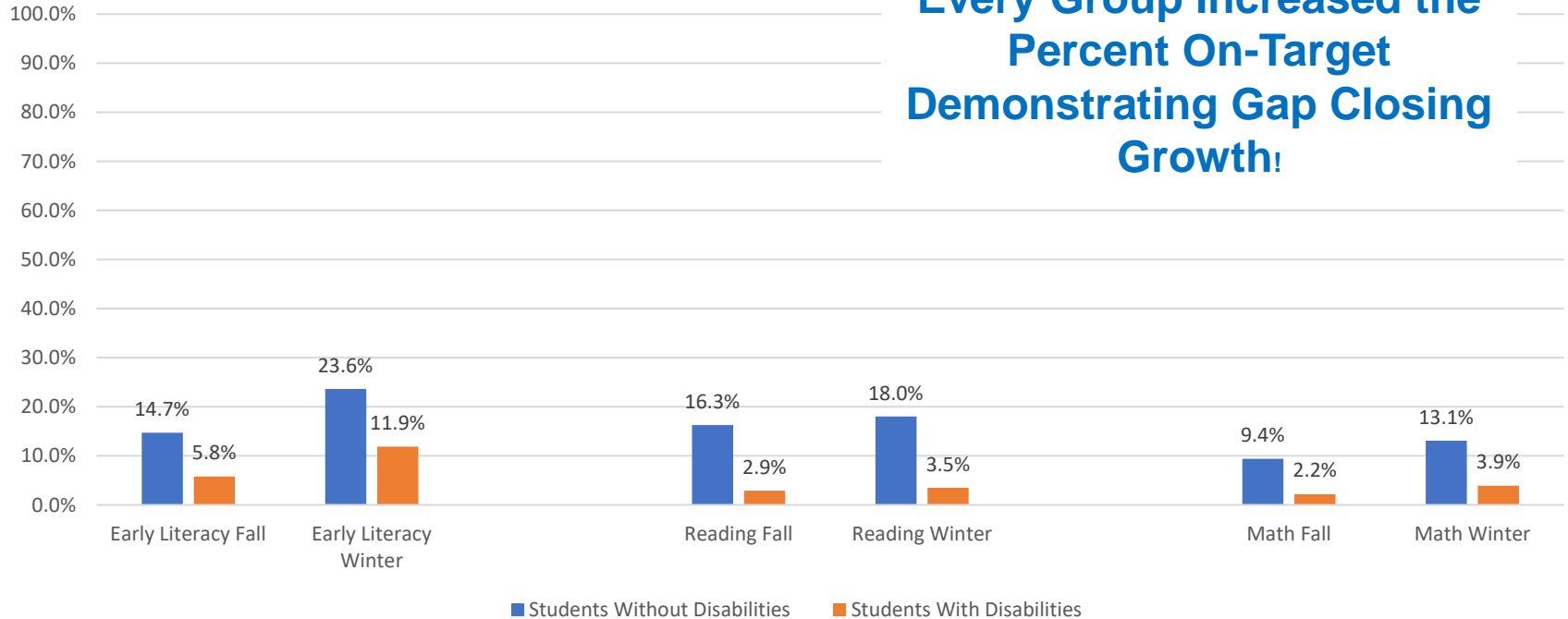
# Race/Ethnicity On-target Data

**Every Group Increased the Percent On-Target Demonstrating Gap Closing Growth!**

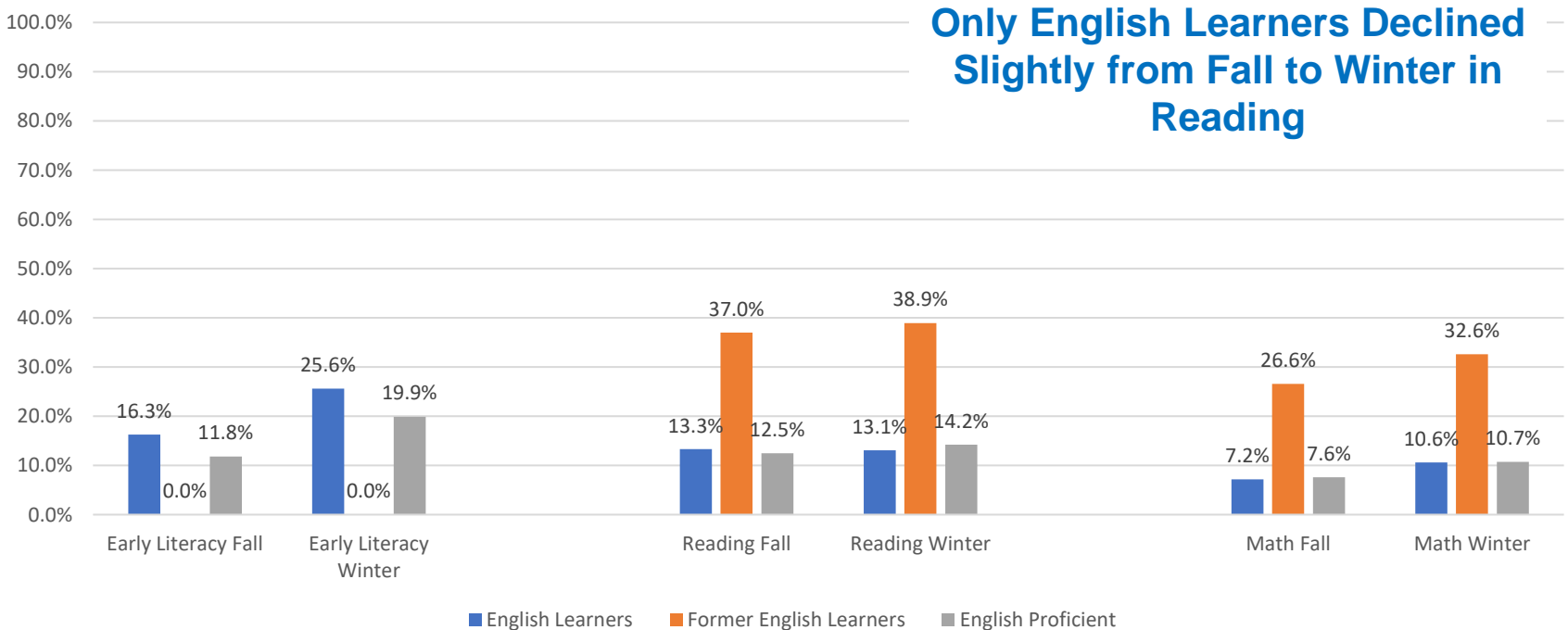


# Student with Disabilities On-target Data

**Every Group Increased the Percent On-Target Demonstrating Gap Closing Growth!**



# English Learners On-target Data



# Overcoming Challenges

---

- Tier 1 is the critical base for instruction, including the use of high-quality instructional materials
- Ambitious Instruction: Accelerating Learning focuses on embedding strategies to address learning loss and closing academic gaps to enhance Tier 1
- Implementing Tier 2 interventions at fidelity



# Thank you.

---



Dr. Keith P. Posley, *Superintendent*