

# Northwest Region Monthly Report

May 07, 2019



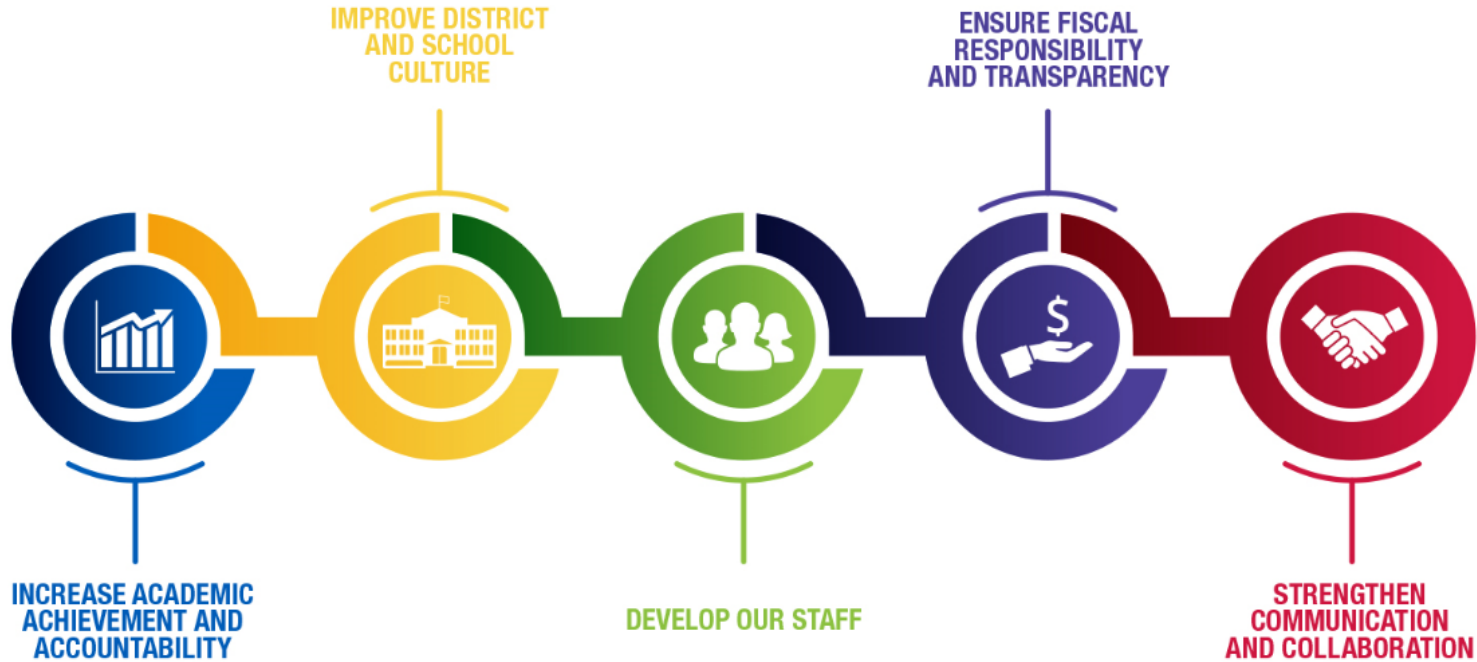
**MILWAUKEE  
PUBLIC SCHOOLS**



**Presenters:** Bridgette Hood-Leveston, Regional Superintendent  
Dr. Katrice Cotton, Chief of School Administration

Dr. Keith P. Posley  
*Superintendent of Schools*

# 5 Priorities for Success



# Northwest Region

---

Regional Superintendent:  
Bridgette Hood-Leveston

---

- 25 Schools
- 9,901 students
- 1,192 staff

**Northwest Region where We Teach, You  
Learn, and the World Benefits**

## Regional Team

- ❖ Instructional Leadership Director
- ❖ Special Education Manager
- ❖ Math, Reading and Writing Support
- ❖ School Performance Coordinators
- ❖ PBIS Coach



# Northwest Region Goals

## Attendance

- By the end of the 2018-2019 school year, the Northwest Region will increase the overall attendance rate by 0.6% by the end of the school year.

## Culture and Climate

- By the end of the 2018-2019 school year, the Northwest Region will decrease the suspension rate by 1% by the end of the school year.

## Ambitious Instruction

- By the end of the 2018-2019 school year the Northwest Region will increase the number of students who score proficient in English Language Arts and Math by 5% as measured by the Wisconsin Forward
- To ensure academic achievement gaps are closing for all students, MPS will decrease the percent of students scoring in the below basic category in English Language Arts and Math by 10% as measured by Wisconsin Forward and ACT.

# Northwest Region Goal Progress 2018-19

---

Attendance Rate

**88.9%** -1.0%

Current year vs Last year

---

Suspension Rate

**9.6%** -0.5%

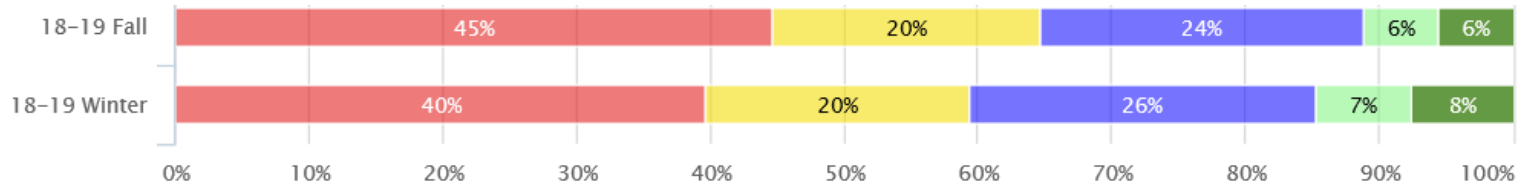
Current year vs Last year

---

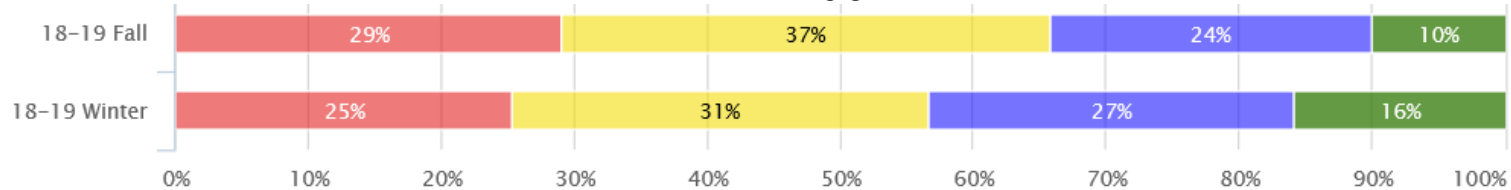


# Northwest Region Goal Progress 2018-19

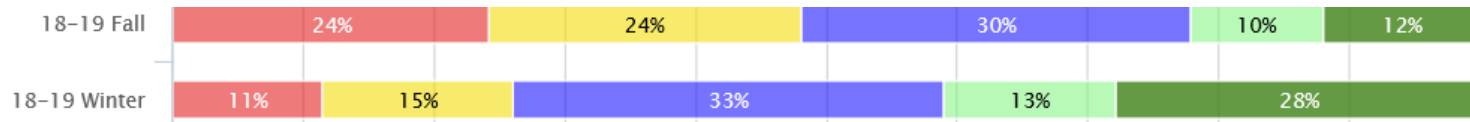
## Reading



## Math

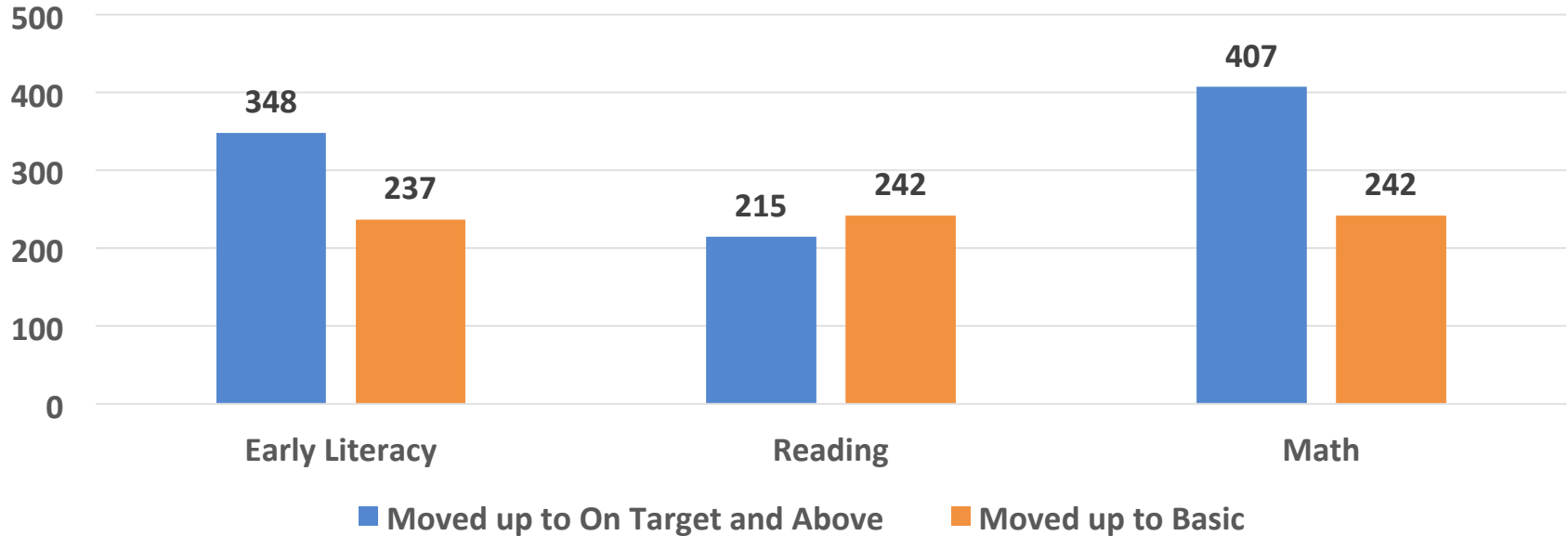


## Early Literacy



# Making Achievement Gains

Students In Higher Performance Categories



**1,691 Students in the Northwest Region improved to a higher performance category from fall 2018 to winter 2019!**



# Northwest Region



## Academics

- 17 schools out of 25 showed an increase on the DPI state report card.
- 1 School advanced a category; moving from **Failure to Meet** to **Meeting Expectations**
- 9 CKLA schools showed a significant increase in Reading on the Winter Star assessment



## Climate

- Youth Leadership Summit
- Climate Reset
- **Referrals** (YTD/LYTD): 10,186 to 5,954 resulting in a 35% decrease
- **Suspensions**-Learning Environment (YTD/LYTD): 18% decrease
- Personal/Physical Safety (YTD/LYTD): 31% decrease



## Partnerships

- Boy's and Girl's Club
- Danceworks
- Arts at Large
- Marquette Dental school
- AGAPE
- Interfaith Tutoring
- Silver Spring Neighborhood
- Capitol west Neighborhood
- Birchwood Health
- 399 school volunteers



# Northwest Region: Points of Pride

---

## Stuart

IB Candidacy  
March 2019

## Green Tree Prep

New School  
2019-20

## German Immersion

Instruction in  
German for all

## MSLS

Hearing, Deaf,  
Hard of Hearing

## Morse

Chess Team 3<sup>rd</sup>  
Place State

## Maple Tree

Kohl's Volunteers

## MSLS

Sign Language  
Instruction for all

# Northwest Region: Student Spotlight

---

## The Student Leadership Summit

Khamren Payton – 7<sup>th</sup> grader

Samuel Morse School for the Gifted and Talented



# Special Education In Northwest

- Students with special needs make up 21% of the Region
- Thoreau is part of the SCPMH (School Community Partnership for Mental Health)
- Students with special needs are encouraged to participate in the Special Olympics.
- Eighty-First and Ninety-Fifth worked in collaboration to host an Autism night for families.
- We provide the option to Sped families to choose to attend our early start schools.
- Ninety-Fifth has full Inclusion
- Every year MSLS puts on a spring musical that has students signing simultaneously with peers who are singing.



# Northwest Parental Involvement

- Parent Portal Accounts
- Parent Conferences
- Open House
- Literacy and Math Nights
- Parent appreciation dinner
- Parent intake conferences
- Parent Volunteers
- Make it take it



# Ninety-Fifth Street School

---

## Principal Sarah Sanders

---

- 421 Students
- 48 Staff members
- K4-5<sup>th</sup> Grade
- Located a mile and a half Northeast of Mayfair Mall
- Offers a traditional school setting with a focus on individual student achievement
- Rigorous Wisconsin State Standards infused into curriculum to assist in providing innovative instructional practices.



# Ninety-Fifth Street School



## Ambitious Instruction

- STEM Focus
- Increase math, reading and writing for all
- Closed the reading gap for SwD
- PBIS Silver recognition awarded for Math and Reading
- Meeting Expectations



## Strong Relationships

- Social/Emotional Coach
- Attendance YTD 93.7%/ LYTD 93.6%
- Referrals decreased 44% (YTD/LYTD)
- Suspensions decreased by 1%
- PBIS Silver recognition awarded for behavior



## Community Partnerships

- Arts in Community Education
  - Girls on the Run (Leadership)
  - InterFaith RSVP Tutoring
  - Milwaukee Symphony Orchestra
  - Wisconsin Conservatory of Music
  - Skylight Music Theatre
  - PTO
- ©2018 Milwaukee Public Schools • 14

# Thank you.

---

*Presenters: Bridgette Hood-Leveston, Regional Superintendent  
Dr. Katrice Cotton, Chief School Administration*



Dr. Keith P. Posley, *Superintendent*

