

Bilingual Multicultural Education

October 13, 2020



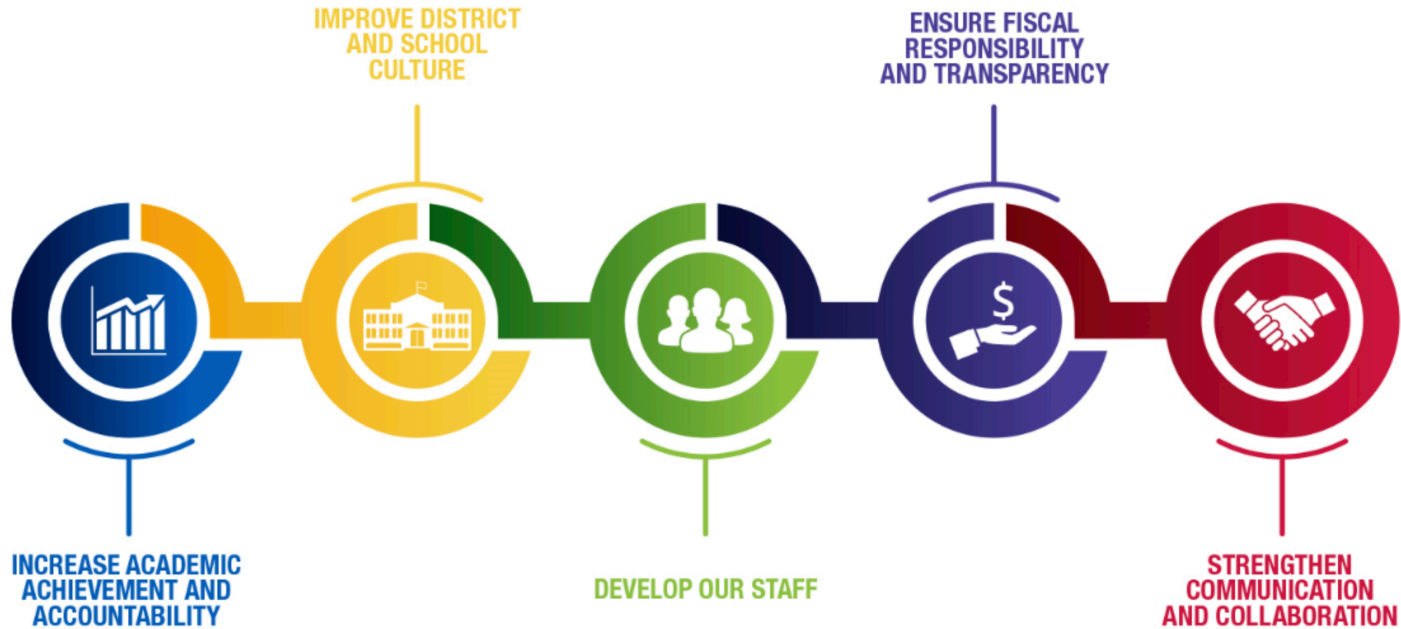
MILWAUKEE
PUBLIC SCHOOLS

Presenters:

Eduardo Galvan, Regional Superintendent
Lorena Gueny, Manager, Bilingual Multicultural Education

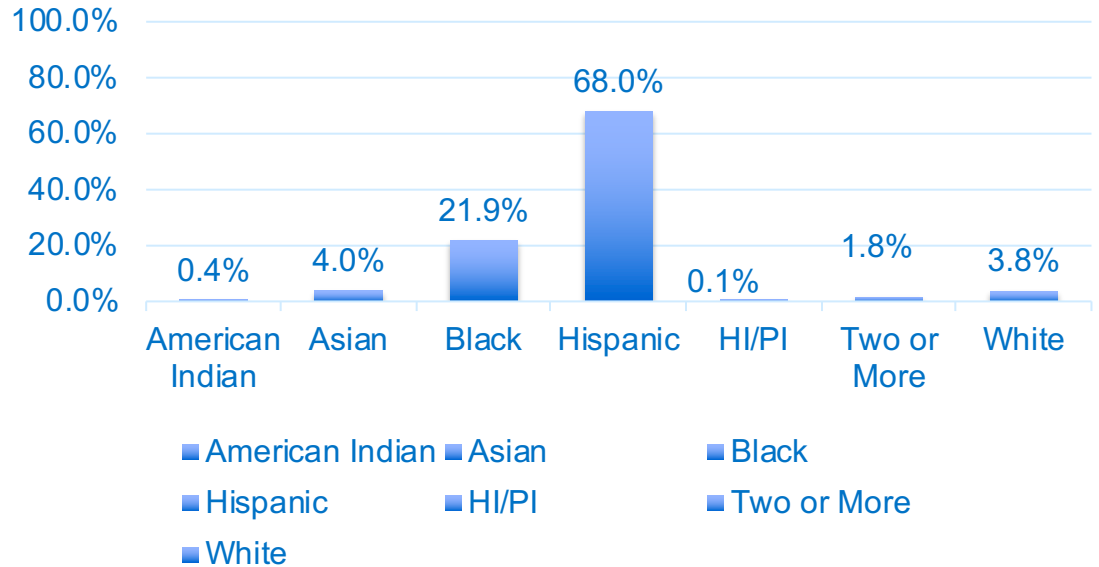
Dr. Keith P. Posley, *Superintendent*

5 Priorities for Success



MPS Bilingual Schools

- 13,026 students
- 20 schools
- 35.3% English language learners
- 23.1% students with disabilities
- 79.5% economically disadvantaged



Bilingual Multicultural Education Department

- **Mission:** The mission of the Department of Bilingual Multicultural Education is to provide equitable access to quality multilingual and multicultural programming in Milwaukee Public Schools.
- **Vision:** MPS students graduate with strong cultural and linguistic identities, leveraging these assets to navigate college, career, and life as global citizens in an inclusive society.



Fundamentals: Resolution 1415R-003

- Bilingual expansion and programming
- Parent engagement and marketing
- District Multicultural Multilingual Advisory Council - DMMAC
- Seal of Biliteracy
- Professional development to schools
- Bilingual support during Phase 1



Expansion Update

Expansion	Work in Progress	Next Steps
Hamilton High School	Support with bilingual program implementation.	Set dates for teacher professional development and support plan for the entire school year. Dates and support plan will be submitted by end of October. Work to recruit students to the program.
Riverside University High School	Meeting with principal to discuss continued growth of bilingual program.	Meet with principal to continue conversation about the needs for the school to grow the bilingual program into 11 th and 12 th grade.
Morgandale School	Exploring options for adding dual language program at the K4 level and growing to 8 th grade.	Meet with principal and explore best program options for expansion. Review current staff and third Friday enrollment data. Develop survey and begin sharing with the community.
Kagel	Expansion has begun successfully in K4.	Addition of K5 2-way dual language class. Explore the addition of 6 th grade bilingual classroom to allow those students already enrolled to remain as the program grows.



Expansion Update

Expansion	Work in Progress	Next Steps
Riley	Expansion has already taken place at K3 through 1 st grade.	Addition of 2 nd grade Montessori 2-way dual language.
Lincoln Avenue	Conversations to grow the existing program.	Addition of a K4 bilingual classroom. This addition has occurred. Monitor enrollment data to adjust program as needed.



Updates

Item Update	Work in Progress	Next Steps
District Multicultural Multilingual Advisory Committee – DMMAC	DMMAC has met 4 times and will continue to meet in the fall. Professional development (PD) was planned, but due to Covid 19 was postponed.	DMMAC will continue to meet and provide PD and information to members of the community. The next meeting will be October 21, 2020.
Parent engagement and marketing	Bilingual department worked with student services to make changes to the online registration process to assist families with language needs.	Meet with student services to discuss the effectiveness of the changes and review any further updates prior to next enrollment window.
Bilingual Task Force	The Bilingual Task Force had its first meeting on January 16, 2020. This group includes parents, community members, and MPS staff. There was an update sent to all members on July 2, 2020.	The Task Force will schedule a meeting for late October. Meetings will be held monthly until the requirements of the resolution are met.
Seal of Biliteracy	Professional development for the Seal of Biliteracy coordinators and advisors on implementation.	To support coordinators and advisors through the implementation process. Promote the Seal of Biliteracy to all qualifying students.



Updates

Item Update	Work in Progress	Next Steps
<p>Bilingual professional development (PD) to schools around new online resources for Spanish literacy.</p> <p>English as a Second Language (ESL): Refugee Mentoring Grant and Refugee School Impact Grant</p>	<p>Weekly support sessions for teachers, and as needed. Additional PD specific to new bilingual teachers.</p> <p>One-on-one or small group support. English language development lessons to English learners.</p> <p>Orientation to new ESL teachers, as well as ongoing support to all ESL teachers in the district.</p> <p>Professional development sessions were uploaded to the Learning Management System (LMS).</p>	<p>Grade level professional development sessions and one-on-one coaching.</p> <p>Renew both grants.</p> <p>To continue small group support and coaching on an as needed basis.</p> <p>Teachers will continue to be encouraged to participate in these professional development sessions and promote them with their colleagues.</p>



Thank you.



Dr. Keith P. Posley, *Superintendent*

© 2020 Milwaukee Public Schools • 10